



MONTGOMERY COUNTY

Early Learning Center



MONTGOMERY COUNTY
Early Childhood
Coalition



Looking forward. Giving back.

Our Plan:

A new, high-quality child care facility in Montgomery County

Location: South Boulevard

Number of children: 124 seats for infant through age 5

- Renovate 6,700 sf. and add 8,000 sf. to the facility to create a 14,000 square foot facility
- Partner with a high-quality provider to operate the facility

Funding partnerships: Local government, MCCF, businesses



Thank you to our investors!

- Acuity
- City of Crawfordsville
- Early Learning Indiana
- Hoosier Heartland State Bank
- State of Indiana
- Lakeside Book Company
- Montgomery County Community Foundation
- Montgomery County Government
- North Central Health Services
- Nucor Steel
- Penguin Random House
- Tempur Sealy
- Tipmont
- Tri-County Bank & Trust
- Wabash College

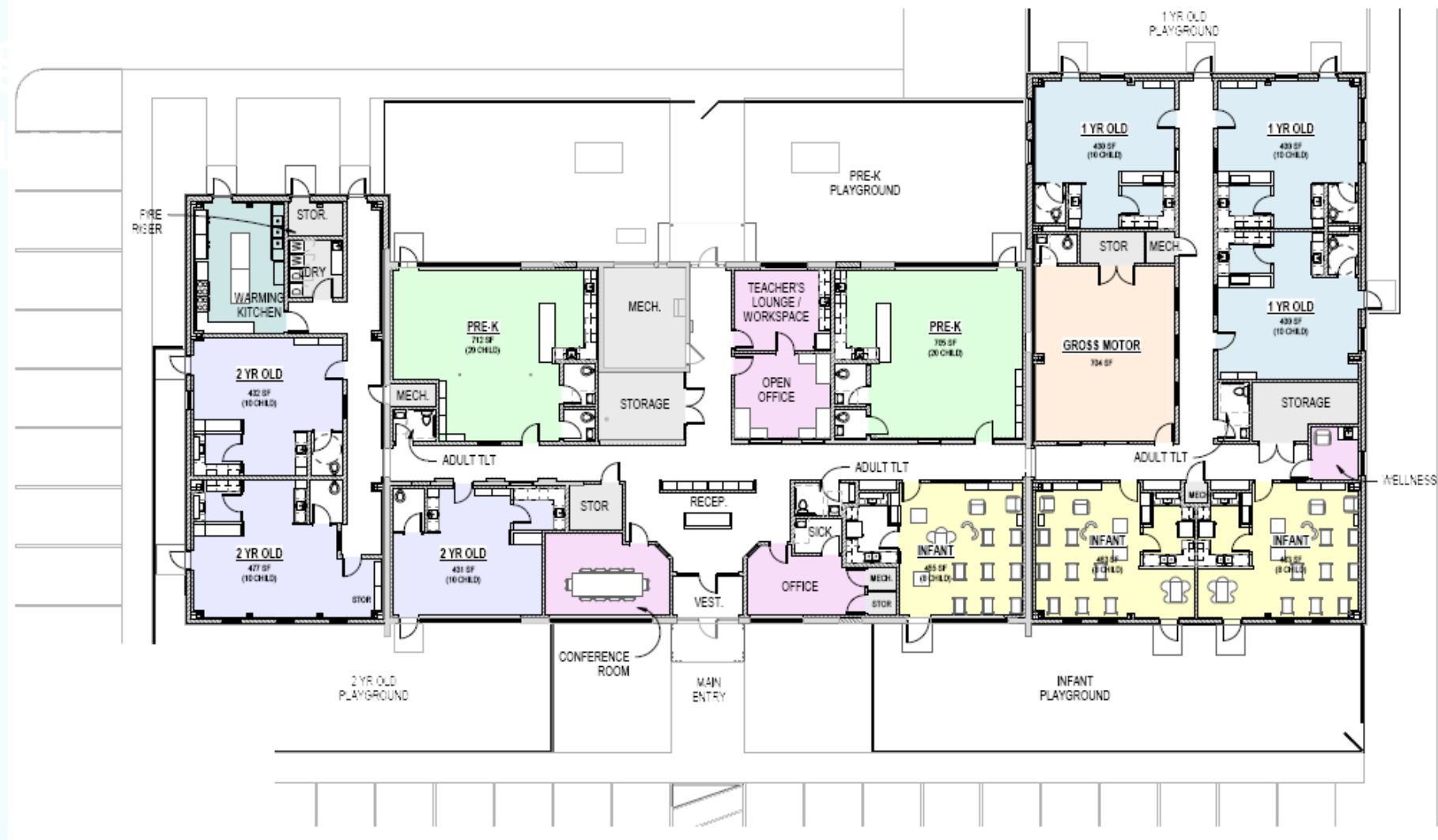




Montgomery County
Early Learning Center

AA-120-RT

Montgomery Early Childhood



MONTGOMERY COUNTY
Early Childhood
Coalition



Looking forward. Giving back.

Our Plan:

A new, high-quality child care facility in Montgomery County

Funding

We have raised **\$5 million** toward the construction of the facility.

We need partners to help with the sustainability of the operations of the center.



MONTGOMERY COUNTY
Early Childhood
Coalition



MONTGOMERY COUNTY
**COMMUNITY
FOUNDATION**

Looking forward. Giving back.

55% of Hoosiers Live in a Child Care Desert

Montgomery County is a child care desert.

Children under 6 in need of care:
2,000

Seats Available:
750
(38%)

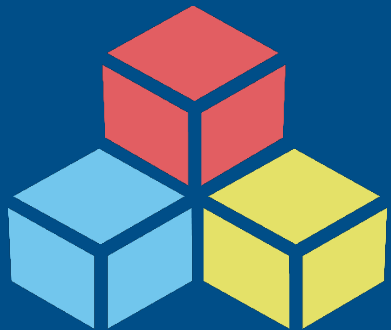
High-Quality Licensed Seats:
223
(11.1%)



MONTGOMERY COUNTY
Early Childhood
Coalition



Affordable, High-Quality Child Care Business Model



A for-profit business model for affordable, high-quality child care does not exist in our market.

Revenue

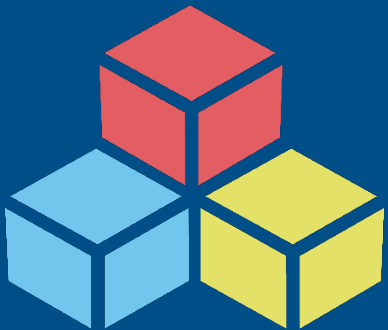
\$10,000 per child,
per year
Tuition and fees
from parents

Expenses

\$14,000 per child,
per year
80% is labor

GAP = \$4,000 / child

Economic Impact of Lack of Access to Child Care



ECONOMIC IMPACT OF LACK OF ACCESS TO CHILD CARE TO RURAL AND URBAN INDIANA COUNTIES

	Impact on Indiana Businesses	Impact on the Economy	Impact on Tax Revenue
Montgomery	-\$7.9 million	\$4.9 million	-\$808,000
Indiana	-\$1.8 billion	-\$1.1 billion	-\$118.8 million

- Lack of access to child care in Montgomery County – Costs businesses **\$7.9 million** annually due to absences and turnover.
- Costs the economy **\$4.9 million** loss of worker earnings cuts into spending.
- Costs local government **\$808,000** annually due to a decline in earnings affecting tax contributions.
- A study conducted by the IU Public Policy Institute and Early Learning Indiana calculated the effects of inadequate child care options resulting in work disruptions such as employee absences and turnover.

Why Child Care?

- **Investment** in your current and future workforce by offering high-quality care
- Ages 0-5 **most critical years of brain development** (85% of a child's capacity to learn is developed by age 5)
- Access to quality child care can **increase school success and reduce the likelihood of crime**
- Child care is **key to a robust economy and successful businesses**
- Studies indicate a return on investment of up to **\$7 for every \$1**

(Source: IU Public Policy Institute)



Why Child Care?

Now is the time to build a child care system that works

- Partnerships must be established to create a long-term, sustainable solution for our community
- Partnerships must include LOCAL government, business and nonprofits
- Federal and State solutions are non-existent
- **If we don't have safe, high-quality child care, how will we attract families to our community?**



MONTGOMERY COUNTY
Early Childhood
Coalition



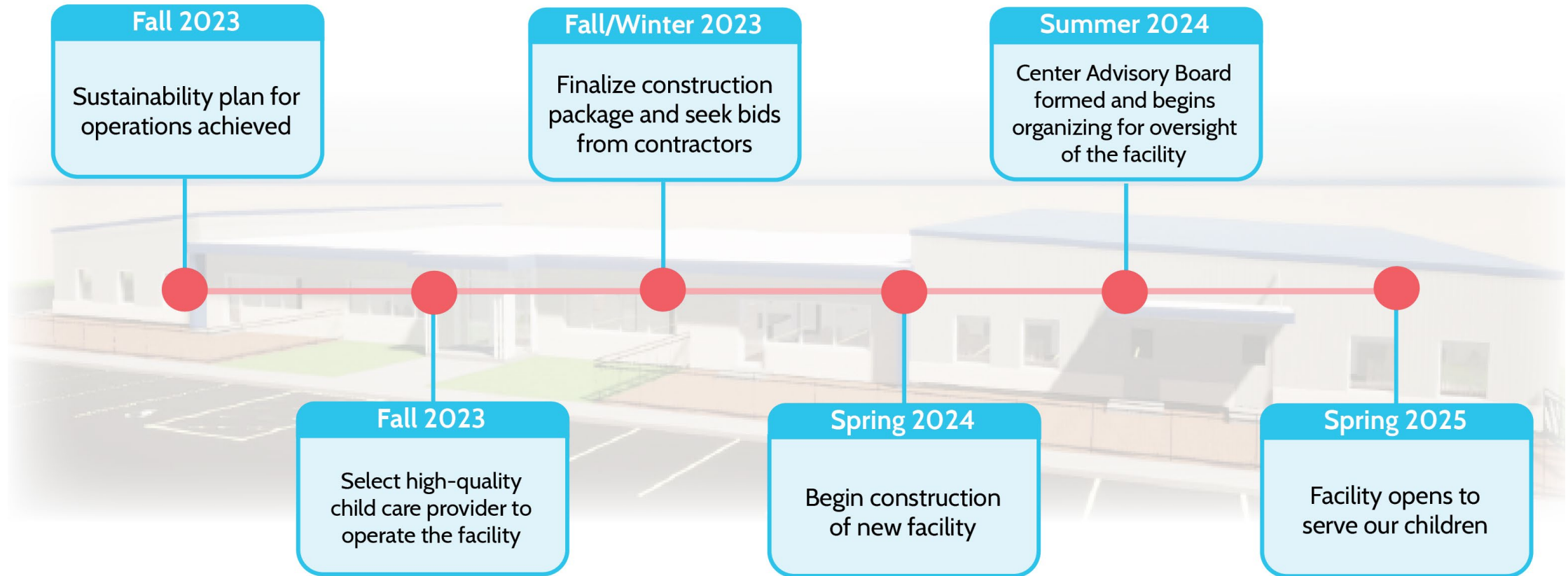
High-quality child care is
economic development and
a **quality of life factor** for
communities.



MONTGOMERY COUNTY
Early Childhood
Coalition



Projected Timeline



** Timeline is an estimate and subject to many variables*