

AGENDA

Tuesday, February 22, 2022 9:26 AM

AGENDA

**MONTGOMERY COUNTY BOARD OF COMMISSIONERS MEETING
MONDAY, FEBRUARY 28, 2022
8 AM
100 E. Main Street - Room 103
Crawfordsville, IN 47933**

Call to Order: Board President John E. Frey

Pledge of Allegiance and Prayer

Consent Agenda

Approval of Claims: 2-14-22 to 2-28-22
Accounts Payable: \$
Payroll Claims: \$
Approval of Meeting Minutes: February 14, 2022
2021 Annual Solid Waste Management District Report

Public Hearing: Petition to Vacate Portion of Old Oak Hill Road

Re-Establishment of Cumulative Capital Development Fund Rate

Ordinance 2022-6: Re-Establishing the Cumulative Capital Development Fund

Re-Establishment of Cumulative Bridge Fund

Ordinance 2022-7: Re-Establishing the Cumulative Bridge Fund

New Business

Agreement - Create Community Development Corporation - Envoy
County Health Insurance: COVID-19 OTC Test Plan Resolution

Ordinances

Introduction Ordinance 2022-8: Establishment of 2022 Law Enforcement Training Fund
Introduction Ordinance 2022-9: Creating Economic Development Department

Resolutions

Resolution 2022-2: Appointing Emergency Management Director and Approving Employment Agreement

Other Business

Adjournment

****Finance Committee Meeting Immediately Following****

Agenda subject to change

Montgomery County acknowledges its responsibility to comply with the Americans with Disabilities Act of 1990. In order to assist individuals with disabilities who require special services (i.e. sign interpretive services, alternative audio/visual devices, and amanuenses) for participation in or access to County sponsored public programs, services, and/or meetings, the County requests that individuals makes requests for these services forty-eight (48) hours ahead of the scheduled program, service, and/or meeting. To make arrangements, contact ADA/Title VI Coordinator Lori Dossett @ 765-361-2623.



Agenda Memo

Thursday, February 24, 2022 1:57 PM

AGENDA MEMO

**MONTGOMERY COUNTY BOARD OF COMMISSIONERS MEETING
MONDAY, FEBRUARY 28, 2022
8 AM
100 E. Main Street - Room 103
Crawfordsville, IN 47933**

Call to Order: Board President John E. Frey

Pledge of Allegiance and Prayer

Consent Agenda

Approval of Claims: 2-14-22 to 2-28-22

Accounts Payable: \$2,872,331.78

Payroll Claims: \$428,005.63

Approval of Meeting Minutes: February 14, 2022

2021 Annual Solid Waste Management District Report

Solid Waste Districts are required to submit an annual reports to the County Commissioners before March 1, 2022.

Public Hearing: Petition to Vacate Portion of Old Oak Hill Road

Petitioner Rob Hudson filed a Petition to Vacate a portion of Oak Hill Road at 907 Lafayette Avenue.

Re-Establishment of Cumulative Capital Development Fund Rate

Each year, the Board of Commissioners must re-establish the Cumulative Capital Development Fund and its tax rate of .0333 per \$100 of Assessed Value. The Cumulative Capital Development Fund may be used for expenses related to capital projects such as construction or repair of public buildings, improvements in the rights of way or sidewalks, purchase of vehicles and purchase of information technology.

Ordinance 2022-6: Re-Establishing the Cumulative Capital Development Fund

Re-Establishment of Cumulative Bridge Fund

Each year, the Board of Commissioners must re-establish the Cumulative Bridge Development Fund and its tax rate of .075 per \$100 of Assessed Value. The Cumulative Bridge Fund may be used for expenses related to the construction and repair of bridges.

Ordinance 2022-7: Re-Establishing the Cumulative Bridge Fund

New Business

Agreement - Create Community Development Corporation - Envoy

Document to be provided.

County Health Insurance: COVID-19 OTC Test Plan Resolution

GPA is proposing three options for consideration. For ease of administration for the employer and ease of access for the member, most companies will elect Option 3 that arranges for coverage with the PBM.

** Option 1: Plan pays 100% with no limits on quantity or reimbursement amount. It would require the submission of a claim for reimbursement and the plan would pay the amount on the*

proof of purchase.

** Option 2: Plan requires the member to purchase the test, then be reimbursed by the plan. Plan pays 100% of the proof of purchase amount up to a maximum of 8 test per Covered Person per month for those tests purchased without a prescription.*

** Option 3: Plan arranges with its PBM to provide the OTC test through the drug card at 100% therefore not requiring any out-of-pocket cost for the member up front. OTC Test are limited to 8 test per Covered Person per month. For those OTC test not purchased through the drug card, the plan will reimburse the member the lesser of the actual cost of the test or \$12 per test for those tests purchased without a prescription.*

Ordinances

Introduction Ordinance 2022-8: Establishment of 2022 Law Enforcement Training Fund
Montgomery County Sheriff's Department is authorized to use the funds distributed by the Indiana Criminal Justice Institute to conduct law enforcement training, including the purchase of supplies and training materials.

Introduction Ordinance 2022-9: Creating Economic Development Department
Ordinance to establish Economic Development Department and the Board of Commissioners will hire an Economic Development Director. The Director will report to the County Administrator and be the representative authority to all State, regional and national economic development organizations and agencies.

Resolutions

Resolution 2022-2: Appointing Emergency Management Director and Approving Employment Agreement
2022 Contract for Emergency Management Director Shari Harrington.

Other Business

Adjournment

****Finance Committee Meeting Immediately Following****

Agenda subject to change

Montgomery County acknowledges its responsibility to comply with the Americans with Disabilities Act of 1990. In order to assist individuals with disabilities who require special services (i.e. sign interpretive services, alternative audio/visual devices, and amanuenses) for participation in or access to County sponsored public programs, services, and/or meetings, the County requests that individuals makes requests for these services forty-eight (48) hours ahead of the scheduled program, service, and/or meeting. To make arrangements, contact ADA/Title VI Coordinator Lori Dossett @ 765-361-2623.



Claims - AP

Tuesday, February 22, 2022 9:30 AM

021522_022822 Docket.xlsx

Invoice	Bank	Check	Payee Name 1	Fund	Fund Desc	Acct	Loc	Loc Desc	Amount	Comment
Uniform allowance 2022	001	220144	Aaron French	1170	LIT Public Safety-Cnty Share	22030	0005	County Sheriff	1,345.00	Uniform
278317	001	033365	Adams Remco Inc	1000	General	24201	0011	Cnty Coop Extension Svcs	48.64	COPIER CLICKS
114956	001		Advanced Correctional Healthca	1000	General	30118	0380	Jail	5.59	DEC21 PHARM
114955	001		Advanced Correctional Healthca	1000	General	30118	0380	Jail	210.51	DEC21 PHARM
Uniform allowance 2022	001	220145	AJ Rice	1170	LIT Public Safety-Cnty Share	22030	0005	County Sheriff	1,345.00	Uniform
	001	220117	Alamo Clerk Treasurer	7330	LIT Local Income Tax	50000	0002	County Auditor	185.00	FEB 2022
	001	220105	Alamo Clerk Treasurer	7331	Lit Public Safety Fund	50000	0002	County Auditor	128.25	SUB SAF 02 2022
00124704	001	033366	American Eagle Auto Glass	1176	Motor Vehicle Highway	33450	0529	County Highway	150.00	WINDSHIELD INSTA
868516	001	033339	American Fam Life Assurance	5100	0300 Payroll Clearing	00018	0000	No Department	1,907.28	JAN 2022
257351 acct # 0fbc4	001	033403	American Fam Life Assurance	5100	0300 Payroll Clearing	00018	0000	No Department	1,907.28	FEB 2022
146052	001		American Structurepoint Inc	1135	Cumulative Bridge	47101	0306	Engineering	1,150.22	BRIDGE CONSTRUCT
Uniform allowance 2022	001	220146	Anthony Teal	1170	LIT Public Safety-Cnty Share	22030	0005	County Sheriff	1,345.00	Uniform
124250	001	033367	Arab	1000	General	30073	0313	Building Maintenance	60.00	JAN 2022
124449	001		Arab	1000	General	30083	0380	Jail	270.00	FEB22 SVC
	001	033340	Assoc Of Ind Prosecuting Attys	1000	General	32100	0009	Prosecuting Attorney	800.00	2022 DUES
01192022	001	033341	At & T Mobility	1170	LIT Public Safety-Cnty Share	30017	0005	County Sheriff	10,404.12	JAN22 AIRCARDS
287290114879	001		At & T Mobility	1000	General	30036	9655	Emergency Response	1.25	011222-021122
Uniform allowance 2022	001	220147	Austin Thomen	1170	LIT Public Safety-Cnty Share	22030	0005	County Sheriff	1,345.00	Uniform
2609362017	001		Auto Zone	1170	LIT Public Safety-Cnty Share	21961	0005	County Sheriff	55.58	WIPER BLADES
2609362332	001		Auto Zone	1170	LIT Public Safety-Cnty Share	21961	0005	County Sheriff	44.18	WIPER BLADES
79206	001	033342	Axis Forensic Toxicology	1000	General	30210	0007	County Coroner	370.00	DRUG TEST
W77713	001		B & M Auto Specialist	1176	Motor Vehicle Highway	23523	0529	County Highway	91.89	SUPPLIES
BR021779	001	033404	B & R Fire Protection, Inc	1000	General	30083	0380	Jail	183.25	EXT SVC
1066	001		B&B Auto and Transmission	1176	Motor Vehicle Highway	23523	0529	County Highway	122.57	PARTS
20220226	001		Banning Engineering	2700	Drainage Maintenance	65100	0006	County Surveyor	102.50	TOBIN #576
INV6765951	001		Barcodes LLC	1170	LIT Public Safety-Cnty Share	21961	0005	County Sheriff	325.23	PERF ROLLS
Uniform allowance 2022	001	220148	Becky Roe	1000	General	22030	0380	Jail	500.00	Uniform
Uniform allowance 2022	001	220149	Ben Fullenwider	1170	LIT Public Safety-Cnty Share	22030	0005	County Sheriff	1,345.00	Uniform
Uniform allowance 2022	001	220150	Beth Gooding	1000	General	22030	0380	Jail	500.00	Uniform
	001	333361	Bleeker Brodey & Andrews	5100	0300 Payroll Clearing	00024	0000	No Department	54.00	DDClr-GARN BBA
	001		Bleeker Brodey & Andrews	5100	0300 Payroll Clearing	00024	0000	No Department	54.00	DDClr-GARN BBA
151827	001	033368	Booth Machinery Sales Inc	1176	Motor Vehicle Highway	33450	0529	County Highway	1,811.81	KUBOTA REPAIR
Uniform allowance 2022	001	220151	Brady Clark	1000	General	22030	0380	Jail	1,050.00	Uniform

021522_022822 Docket.xlsx

Invoice	Bank	Check	Payee Name 1	Fund	Fund Desc	Acct	Loc	Loc Desc	Amount	Comment
Uniform allowance 2022		001	220152 Brandon Alenduff	1000	General	22030	0380	Jail	1,050.00	Uniform
Uniform allowance 2022		001	220153 Breana Lowery	1000	General	22030	0380	Jail	262.50	Uniform
FEB142022		001	033369 Brenda Clawson	1176	Motor Vehicle Highway	30028	0529	County Highway	240.00	FEB 2022
Uniform allowance 2022		001	220154 Brian Riehle	1170	LIT Public Safety-Cnty Share	22030	0005	County Sheriff	1,345.00	Uniform
Uniform allowance 2022		001	220155 Brittany Brown	1000	General	22030	0380	Jail	1,050.00	Uniform
Uniform allowance 2022		001	220156 Brody Nichols	1000	General	22030	0380	Jail	612.50	Uniform
Uniform allowance 2022		001	220157 Brooke Clouser	4900	Central Comms Center	20009	0303	Communications Dept (Rad	112.32	Uniform
		001	220118 Brown Township Trustee	7330	LIT Local Income Tax	50000	0002	County Auditor	2,612.58	FEB 2022
Uniform allowance 2022		001	220158 Caleb Berry	1170	LIT Public Safety-Cnty Share	22030	0005	County Sheriff	784.56	Uniform
Uniform allowance 2022		001	220159 Cameron Boller	1000	General	22030	0380	Jail	1,050.00	Uniform
28004533 01102022-02092022		001	033370 Cannon Financial Services Inc	1197	Storm Water Reviews Engineer	44500	0306	Engineering	291.66	JAN 2022
27567754 PLOTTER LEASE		001	033405 Cannon Financial Services Inc	4915	Mapping Fees	30143	0753	GIS/Mapping	376.66	101021-110921
27763810 LATE FEE		001	033405 Cannon Financial Services Inc	4915	Mapping Fees	30143	0753	GIS/Mapping	37.67	PLOTTER
28155711 021022-030922		001	033405 Cannon Financial Services Inc	1197	Storm Water Reviews Engineer	44500	0306	Engineering	291.66	FEB 2022
AR57176		001	220140 Cardinal Copier Solutions	1189	Recorder's Records Perpet	33010	0004	County Recorder	121.17	1121-0222 COPIER
Uniform allowance 2022		001	220160 Casey Stonebraker	1000	General	22030	0380	Jail	1,050.00	Uniform
		001	220217 CEL & P	1176	Motor Vehicle Highway	30035	0529	County Highway	572.51	JAN22
		001	220217 CEL & P	1176	Motor Vehicle Highway	30035	0529	County Highway	300.14	JAN22
		001	220217 CEL & P	1176	Motor Vehicle Highway	30035	0529	County Highway	1,015.89	JAN22
		001	220217 CEL & P	1000	General	30035	0068	County Commissioners	9,578.57	JAN22
		001	220217 CEL & P	1000	General	30035	0068	County Commissioners	52.32	JAN22
		001	220217 CEL & P	1000	General	30035	0068	County Commissioners	2,556.12	JAN22
		001	220217 CEL & P	1000	General	30035	0068	County Commissioners	304.30	JAN22
		001	220217 CEL & P	1000	General	30035	0068	County Commissioners	1,512.81	JAN22
		001	220217 CEL & P	1000	General	30035	0068	County Commissioners	74.77	JAN22
IO60284		001	Central Ind Rubber Products	1176	Motor Vehicle Highway	23523	0529	County Highway	399.03	PARTS
4712		001	033371 Ceres Solutions Cooperative	1224	Reassessment	22010	0008	County Assessor	35.01	FUEL
2350085		001	033406 Ceres Solutions Cooperative	1173	MVH Restricted Fund	23002	0529	County Highway	834.40	FUEL
2350089		001	033406 Ceres Solutions Cooperative	1173	MVH Restricted Fund	21000	0529	County Highway	24,684.87	FUEL
01312022		001	033406 Ceres Solutions Cooperative	1170	LIT Public Safety-Cnty Share	21000	0005	County Sheriff	11,046.64	JAN22 FUEL
5005		001	033406 Ceres Solutions Cooperative	9178	FY22 DOC PROBATION GRANT	21000	0235	Probation	45.70	FUEL
5986		001	033406 Ceres Solutions Cooperative	9178	FY22 DOC PROBATION GRANT	21000	0235	Probation	33.16	FUEL
7906		001	033406 Ceres Solutions Cooperative	9178	FY22 DOC PROBATION GRANT	21000	0235	Probation	33.48	FUEL

021522_022822 Docket.xlsx

Invoice	Bank	Check	Payee Name 1	Fund	Fund Desc	Acct	Loc	Loc Desc	Amount	Comment
8616		001 033406	Ceres Solutions Cooperative	9178	FY22 DOC PROBATION GRANT	21000	0235	Probation	31.88	FUEL
5842		001 033406	Ceres Solutions Cooperative	9178	FY22 DOC PROBATION GRANT	21000	0235	Probation	44.11	FUEL
473094		001	Ceres Solutions Cooperative	1170	LIT Public Safety-Cnty Share	21000	0005	County Sheriff	688.32	PROPANE
7666		001	Ceres Solutions Cooperative	1000	General	21000	0012	Veterans Service Officer	48.15	FUEL
1204002		001	Ceres Solutions Cooperative	1197	Storm Water Reviews Engineer	21000	0006	County Surveyor	60.07	FUEL
5357 18.44 GALLONS		001	Ceres Solutions Cooperative	1000	General	21000	9655	Emergency Response	52.41	TAHOE FUEL
6069 20.19 GALLONS		001	Ceres Solutions Cooperative	1000	General	21000	9655	Emergency Response	69.26	DODGE FUEL
6543 24.62 GALLONS		001	Ceres Solutions Cooperative	1000	General	21000	9655	Emergency Response	56.79	DODGE FUEL
8951 7.03 GALLONS		001	Ceres Solutions Cooperative	1000	General	21000	9655	Emergency Response	20.34	GAS CAN FUEL
Uniform allowance 2022		001 220161	Cheyenne Warren	1000	General	22030	0380	Jail	1,050.00	Uniform
Uniform allowance 2022		001 220162	Christian Brown	1000	General	22030	0380	Jail	1,050.00	Uniform
24420 MHMO UPDATE		001 033372	Christopher B Burke Engineerin	8125	2021 MHMP Grant 97.047	30050	9655	Emergency Response	2,101.36	112821-123121 SV
4108487935		001 220218	Cintas Corporation Loc #366	1176	Motor Vehicle Highway	13002	0529	County Highway	274.79	UNIFORM
4109209416		001 220218	Cintas Corporation Loc #366	1176	Motor Vehicle Highway	13002	0529	County Highway	268.26	UNIFORM
4109841324		001	Cintas Corporation Loc #366	1176	Motor Vehicle Highway	13002	0529	County Highway	218.88	UNIFORM
		001 220119	Clark Township Trustee	7330	LIT Local Income Tax	50000	0002	County Auditor	1,142.67	FEB 2022
59485		001	Clark Truck Equipment Co Inc	1176	Motor Vehicle Highway	23523	0529	County Highway	355.00	PARTS
59486		001	Clark Truck Equipment Co Inc	1176	Motor Vehicle Highway	23523	0529	County Highway	136.17	BLADE GUIDES
59505		001	Clark Truck Equipment Co Inc	1176	Motor Vehicle Highway	23523	0529	County Highway	408.00	PARTS
59506		001	Clark Truck Equipment Co Inc	1176	Motor Vehicle Highway	23523	0529	County Highway	71.00	PARTS
59397		001	Clark Truck Equipment Co Inc	1176	Motor Vehicle Highway	23523	0529	County Highway	870.00	PARTS
59429		001	Clark Truck Equipment Co Inc	1176	Motor Vehicle Highway	23523	0529	County Highway	277.77	PARTS
0203022		001	Clayton Photography	1170	LIT Public Safety-Cnty Share	24201	0005	County Sheriff	42.00	DEPUTY PHOTOS
#114		001	CLR Inc	1135	Cumulative Bridge	47101	0306	Engineering	441,972.61	BRIDGE 114
		001 033334	Coal Creek Township Trustee	7330	LIT Local Income Tax	50000	0002	County Auditor	2,202.75	FEB 2022
Uniform allowance 2022		001 220163	Cody Swick	1000	General	22030	0380	Jail	1,050.00	Uniform
Uniform allowance 2022		001 220164	Cole Thomas	1000	General	22030	0380	Jail	1,050.00	Uniform
CONTRACT		001 033373	Collier Gobel & Homann LLC	1000	General	30115	0271	Public Defender	2,500.00	FEB22
CONTRACT		001 033373	Collier Gobel & Homann LLC	1000	General	30115	0271	Public Defender	3,000.00	FEB22
REIMB021422		001 033373	Collier Gobel & Homann LLC	1181	Plat Book	30050	0002	County Auditor	10.00	CVR CHR9 ADAMS D
CONTRACT		001 033373	Collier Gobel & Homann LLC	1000	General	30115	0271	Public Defender	-2,500.00	Void Docket Chk
CONTRACT		001 033373	Collier Gobel & Homann LLC	1000	General	30115	0271	Public Defender	-3,000.00	Void Docket Chk
REIMB021422		001 033373	Collier Gobel & Homann LLC	1181	Plat Book	30050	0002	County Auditor	-10.00	Void Docket Chk

021522_022822 Docket.xlsx

Invoice	Bank	Check	Payee Name 1	Fund	Fund Desc	Acct	Loc	Loc Desc	Amount	Comment
FEBRUARY 2022	001	033398	Collier Gobel & Homann LLC	1000	General	30115	0271	Public Defender	2,500.00	CONTRACT
REIMB021422	001	033398	Collier Gobel & Homann LLC	1181	Plat Book	30050	0002	County Auditor	10.00	OVR CHG ADAMS
72341720211811	001	033407	Colonial Life Insurance Co	5100	0300 Payroll Clearing	00019	0000	No Department	504.72	FEB 2022
022122-032022	001	033374	Comcast	1000	General	30035	0068	County Commissioners	133.25	FEB/MAR 2022
021922-031822	001	033374	Comcast	1000	General	30035	0068	County Commissioners	216.17	FEB/MAR 2022
Uniform allowance 2022	001	220165	Conner Parker	1000	General	22030	0380	Jail	437.50	Uniform
Uniform allowance 2022	001	220166	Connie Dale	1000	General	22030	0380	Jail	1,050.00	Uniform
Uniform allowance 2022	001	220167	Connie Smith	1000	General	22030	0380	Jail	500.00	Uniform
3393438	001	033343	Constellation New Energy Gas D	1176	Motor Vehicle Highway	30035	0529	County Highway	304.83	DEC 2021
3393439	001	033343	Constellation New Energy Gas D	1000	General	30035	0068	County Commissioners	904.81	DEC 2021
3393437	001	033343	Constellation New Energy Gas D	1000	General	30035	0068	County Commissioners	3,460.50	DEC 2021
3393436	001	033343	Constellation New Energy Gas D	1000	General	30035	0068	County Commissioners	101.35	DEC 2021
3393435	001	033343	Constellation New Energy Gas D	1000	General	30035	0068	County Commissioners	146.53	DEC 2021
FD-2595-0013122 TESTING	001	033375	Cordant Health Solutions	2100	Supplemental Adult Prob Svcs	30152	0235	Probation	4,064.50	CHEMICAL TESTING
814108	001		Crawfordsville Automotive Inc	1170	LIT Public Safety-Cnty Share	21961	0005	County Sheriff	24.27	STARTED FLUID
811911	001		Crawfordsville Automotive Inc	1176	Motor Vehicle Highway	23523	0529	County Highway	30.60	DE-ICER
812019	001		Crawfordsville Automotive Inc	1176	Motor Vehicle Highway	23523	0529	County Highway	4.67	U-BOLT
812241	001		Crawfordsville Automotive Inc	1176	Motor Vehicle Highway	23523	0529	County Highway	10.29	FUEL FILTER
812443	001		Crawfordsville Automotive Inc	1176	Motor Vehicle Highway	23523	0529	County Highway	150.36	MISC SUPPLIES
812605	001		Crawfordsville Automotive Inc	1176	Motor Vehicle Highway	23523	0529	County Highway	3.33	TUBING
812913	001		Crawfordsville Automotive Inc	1176	Motor Vehicle Highway	23523	0529	County Highway	45.48	COUPLERS
812925	001		Crawfordsville Automotive Inc	1176	Motor Vehicle Highway	23523	0529	County Highway	12.50	BATT CONNECTOR
813074	001		Crawfordsville Automotive Inc	1176	Motor Vehicle Highway	23523	0529	County Highway	69.05	MISC SUPPLIES
813182	001		Crawfordsville Automotive Inc	1176	Motor Vehicle Highway	23523	0529	County Highway	64.95	FLOOR DRI
813250 MULTIPLE INV CREDIT MEMO 813951	001		Crawfordsville Automotive Inc	1176	Motor Vehicle Highway	23523	0529	County Highway	404.12	MISC SUPPLIES
813253	001		Crawfordsville Automotive Inc	1176	Motor Vehicle Highway	23523	0529	County Highway	688.40	BRAKE DRUMS
813524	001		Crawfordsville Automotive Inc	1176	Motor Vehicle Highway	23523	0529	County Highway	12.32	GAS CAP
813591	001		Crawfordsville Automotive Inc	1176	Motor Vehicle Highway	23523	0529	County Highway	282.17	FILTERS
813778	001		Crawfordsville Automotive Inc	1176	Motor Vehicle Highway	23523	0529	County Highway	16.88	DUCT TAPE
813845	001		Crawfordsville Automotive Inc	1176	Motor Vehicle Highway	23523	0529	County Highway	4.42	KEY STOCK
813875	001		Crawfordsville Automotive Inc	1176	Motor Vehicle Highway	23523	0529	County Highway	7.18	WIPER BLADES
813954	001		Crawfordsville Automotive Inc	1176	Motor Vehicle Highway	23523	0529	County Highway	4.22	BATTERY
	001	220120	Crawfordsville Clk Treasurer	7330	LIT Local Income Tax	50000	0002	County Auditor	260,939.33	FEB 2022

021522_022822 Docket.xlsx

Invoice	Bank	Check	Payee Name 1	Fund	Fund Desc	Acct	Loc	Loc Desc	Amount	Comment
	001	220106	Crawfordsville Clk Treasurer	7331	Lit Public Safety Fund	50000	0002	County Auditor	180,946.67	SUB SAF 02 2022
95568	001		Crawfordsville Paper	1000	General	20001	0380	Jail	847.13	SUPPLIES
95358	001		Crawfordsville Paper	1000	General	21850	0313	Building Maintenance	91.31	SUPPLIES
95375	001		Crawfordsville Paper	1000	General	21850	0313	Building Maintenance	1,002.41	SUPPLIES
95572	001		Crawfordsville Paper	1000	General	21850	0313	Building Maintenance	113.73	SUPPLIES
	001	220107	Crawfordsville Public Library	7330	LIT Local Income Tax	50000	0002	County Auditor	50,254.08	CERT SHARE 02202
011322-022322	001	033344	Crawfordsville Utilities	1000	General	30035	0068	County Commissioners	1,920.29	JAN 2022
011322-022322	001	033344	Crawfordsville Utilities	1000	General	30035	0068	County Commissioners	19.81	JAN 2022
011322-022322	001	033344	Crawfordsville Utilities	1000	General	30035	0068	County Commissioners	51.32	JAN 2022
011322-022322	001	033344	Crawfordsville Utilities	1000	General	30035	0068	County Commissioners	52.27	JAN 2022
120821-011122	001	033344	Crawfordsville Utilities	1176	Motor Vehicle Highway	30035	0529	County Highway	45.23	DEC 2021
ACCT# 1-30030-00	001	033408	Crawfordsville Utilities	1000	General	30035	0068	County Commissioners	155.10	JAN 2022
Uniform allowance 2022	001	220168	CT Bailey	1000	General	22030	0380	Jail	1,050.00	Uniform
Uniform allowance 2022	001	220169	Daniel Barth	1000	General	22030	0380	Jail	1,050.00	Uniform
Uniform allowance 2022	001	220170	Darlene Lazell	1000	General	22030	0380	Jail	500.00	Uniform
	001	220121	Darlington Clerk Treasurer	7330	LIT Local Income Tax	50000	0002	County Auditor	3,801.92	FEB 2022
	001	220108	Darlington Clerk Treasurer	7331	LIT Public Safety Fund	50000	0002	County Auditor	2,636.42	SUB SAF 02 2022
	001	033335	Darlington Public Library	7330	LIT Local Income Tax	50000	0002	County Auditor	2,087.42	FEB 2022
2202-CB-91	001		Darren Chadd	1000	General	30052	0201	Superior Court #1	25.00	PRO TEM SVC
2022-0018	001		Data Pit Stop Inc	1216	Auditors Ineligible Deductions	30050	0002	County Auditor	4,000.00	2022 SVC
Uniform allowance 2022	001	220171	Deric Punks	1170	LIT Public Safety-Cnty Share	22030	0005	County Sheriff	896.64	Uniform
Uniform allowance 2022	001	220172	Devin Shaw	1000	General	22030	0380	Jail	787.50	Uniform
2041606	001	033376	Disa Global Solutions Inc	1176	Motor Vehicle Highway	30139	0529	County Highway	1,137.50	DRUG TESTING
Uniform allowance 2022	001	220173	Drake Pike	1000	General	22030	0380	Jail	1,050.00	Uniform
010821-012722	001	033345	Duke Energy	1176	Motor Vehicle Highway	30035	0529	County Highway	13.92	JAN 2022
Uniform allowance 2022	001	220174	Dylan Garing	1000	General	22030	0380	Jail	700.00	Uniform
110	001	033377	Edge Information Technologies	4900	Central Comms Center	30128	0303	Communications Dept (Rad	1,500.00	JAN2022 SVC
6314	001		Edward Beavers	1176	Motor Vehicle Highway	23523	0529	County Highway	15.50	SUPPLIES
	001	220219	Enterprise Fleet Management	1176	Motor Vehicle Highway	44505	0529	County Highway	121,923.85	2022 LEASE
22016	001		Equipment Marketing Co	1176	Motor Vehicle Highway	23523	0529	County Highway	1,922.96	SUPPLIES
Uniform allowance 2022	001	220175	Ethan Miller	1000	General	22030	0380	Jail	87.50	Uniform
Uniform allowance 2022	001	220176	Ethan Redmon	1170	LIT Public Safety-Cnty Share	22030	0005	County Sheriff	1,345.00	Uniform
138631	001		Etter Ford-Mercury	1176	Motor Vehicle Highway	23523	0529	County Highway	85.10	PARTS

021522_022822 Docket.xlsx

Invoice	Bank	Check	Payee Name 1	Fund	Fund Desc	Acct	Loc	Loc Desc	Amount	Comment
138633		001	Etter Ford-Mercury	1176	Motor Vehicle Highway	23523	0529	County Highway	143.74	PARTS
INCRA141855		001	Fastenal Co	1000	General	24202	0380	Jail	20.16	FILTERS
INCRA141868		001	Fastenal Co	1000	General	24202	0380	Jail	116.65	DRILL BIT
INCRA141869		001	Fastenal Co	1000	General	24202	0380	Jail	21.78	DRILL BIT
1493		001	033378 Foster Farm Drainage	2700	Drainage Maintenance	65032	0006	County Surveyor	1,747.56	#523 LEVI HAWKIN
1492		001	033378 Foster Farm Drainage	2600	Drain Construction/Reconst	65067	0006	County Surveyor	1,302.09	#552 CHARLES SCH
1496		001	Foster Farm Drainage	2600	Drain Construction/Reconst	65079	0006	County Surveyor	1,480.35	#560 RICH VIRT
1499		001	Foster Farm Drainage	2600	Drain Construction/Reconst	65008	0006	County Surveyor	759.00	#503 FB BROWN
1498		001	Foster Farm Drainage	2700	Drainage Maintenance	65027	0006	County Surveyor	1,579.25	#519 J GILLILAND
1497		001	Foster Farm Drainage	2700	Drainage Maintenance	65068	0006	County Surveyor	1,361.46	#553 J SNODDY
		001	220122 Franklin Township Trustee	7330	LIT Local Income Tax	50000	0002	County Auditor	1,298.58	FEB 2022
59757		001	220220 Future Energy Solutions	1000	General	30035	0068	County Commissioners	1,500.42	FEB 2022
		001	033346 Globe Life Attn: LN Worksite	5100	0300 Payroll Clearing	00026	0000	No Department	2,712.16	W/E 02112022
FEBRUARY 2022		001	033399 Goebel Law Offices	1000	General	30115	0271	Public Defender	3,000.00	CONTRACT
216409532		001	Gordon Food Service	1000	General	20004	0380	Jail	3,199.28	MEALS
216409539		001	Gordon Food Service	1000	General	20004	0380	Jail	153.76	SUPPLIES
216576375 WITH CREDIT 898147 & 898013		001	Gordon Food Service	1000	General	20004	0380	Jail	4,550.12	MEALS
02222022		001	220226 GPA, Inc.	4700	Self Insurance	00034	0068	County Commissioners	62,997.32	W/E 02252022
972064598		002	Great-West Trust Company,Llc	5100	0300 Payroll Clearing	00015	0002	County Auditor	2,222.37	PR 021122
2312		001	H & M Plumbing LLC	4900	Central Comms Center	30400	0303	Communications Dept (Rad	190.00	DRAIN/SINK MAINT
01292022		001	Hannah Cochran	9178	FY22 DOC PROBATION GRANT	30090	0235	Probation	45.95	UBER FOR CONFERE
31741		001	033347 Hay-Bush Mechanical	1000	General	30500	0380	Jail	944.22	COOLER SVC
31654		001	033379 Hay-Bush Mechanical	1000	General	45023	0313	Building Maintenance	110.00	SVC
31704		001	033379 Hay-Bush Mechanical	1000	General	45023	0313	Building Maintenance	395.00	SVC
31763		001	033379 Hay-Bush Mechanical	1000	General	45023	0313	Building Maintenance	876.00	FILTERS
31774		001	033409 Hay-Bush Mechanical	1000	General	30500	0380	Jail	130.00	COOLER REPAIR
Uniform allowance 2022		001	220177 Henry Carrell	1000	General	22030	0380	Jail	1,050.00	Uniform
7021223		001	Home Depot Credit Services	1000	General	24202	0380	Jail	71.68	TABLE/CLOTH
6011351		001	Home Depot Credit Services	1000	General	24202	0380	Jail	26.34	ROLLER/FILLER
1513911		001	Home Depot Credit Services	1000	General	24202	0380	Jail	13.58	TAPE
6012070		001	Home Depot Credit Services	1000	General	24202	0380	Jail	37.20	3-WIRE
5012092		001	Home Depot Credit Services	1000	General	24202	0380	Jail	16.02	AMMONIA
5022443		001	Home Depot Credit Services	1000	General	24202	0380	Jail	45.98	LADDER

021522_022822 Docket.xlsx

Invoice	Bank	Check	Payee Name 1	Fund	Fund Desc	Acct	Loc	Loc Desc	Amount	Comment
3523847		001	Home Depot Credit Services	1000	General	24202	0380	Jail	96.54	BROOMS
9524080		001	Home Depot Credit Services	1000	General	24202	0380	Jail	47.88	GRINDER
3613682		001	Home Depot Credit Services	1000	General	24202	0380	Jail	42.06	ALUMINUM
5231010622		001	Home Depot Credit Services	1176	Motor Vehicle Highway	23523	0529	County Highway	66.90	SUPPLIES
11445		001	Hoosier Ink & Toner LLC	1224	Reassessment	24201	0008	County Assessor	79.90	BROWN TONERS
Uniform allowance 2022		001	220178 Hunter Eads	1000	General	22030	0380	Jail	875.00	Uniform
2022MEM-195 AG		001	IACCAC C/O Putnum Co	9178	FY22 DOC PROBATION GRANT	32100	0235	Probation	30.00	2022 MEMBERSHIP
2022MEM-202 LV		001	IACCAC C/O Putnum Co	9178	FY22 DOC PROBATION GRANT	32100	0235	Probation	30.00	2022 MEMBERSHIP
SI-919391		001	033348 ICC Business Products	1000	General	24201	0009	Prosecuting Attorney	46.09	SUPPLIES
SI-921063		001	033348 ICC Business Products	1000	General	24201	0009	Prosecuting Attorney	148.20	PAPER
SI-924702		001	ICC Business Products	1000	General	24201	0009	Prosecuting Attorney	235.62	NOTES/PAPER
011222-020822		001	033380 Indiana American Water Co.	1000	General	30035	0068	County Commissioners	1,346.92	JAN 2022
011222-020822		001	033380 Indiana American Water Co.	1000	General	30035	0068	County Commissioners	61.26	JAN 2022
01202022-02162022		001	033410 Indiana American Water Co.	1000	General	30035	0068	County Commissioners	56.47	JAN 2022
		001	Indiana Dept Of Revenue	5100	0300 Payroll Clearing	00014	0000	No Department	8,499.46	DDCI- COUNTY TAX
		001	Indiana Dept Of Revenue	5100	0300 Payroll Clearing	00014	0000	No Department	12,312.35	DDCI- STATE TAX
		001	Indiana Dept Of Revenue	5100	0300 Payroll Clearing	00014	0000	No Department	8,954.18	DDCI- COUNTY TAX
		001	Indiana Dept Of Revenue	5100	0300 Payroll Clearing	00014	0000	No Department	12,960.06	DDCI- STATE TAX
21-SJC59-C54-001 VTC RETURNED FUNDS		001	033381 Indiana Office of Court Serv	9134	21/22 Veterans Treatment Ct Gr	11522	0235	Probation	1,492.03	OVRCL OF SALARY
4609282		001	033349 Indiana Office Of Technology	4900	Central Comms Center	30050	0303	Communications Dept (Rad	140.47	JAN22 SVC
		001	Indiana State Collection Unit	5100	0300 Payroll Clearing	00022	0000	No Department	884.00	DDCI-CHILD SUP
		001	Indiana State Collection Unit	5100	0300 Payroll Clearing	00022	0000	No Department	884.00	DDCI-CHILD SUP
Uniform allowance 2022		001	220179 Inez Weimer	1000	General	22030	0380	Jail	1,050.00	Uniform
		001	Internal Revenue Service	5100	0300 Payroll Clearing	00012	0000	No Department	32,788.79	DDCI-FED TAX
		001	Internal Revenue Service	1000	General	12000	0068	County Commissioners	4,100.40	DDCI-FICA-MED
		001	Internal Revenue Service	1159	Health	12000	0610	Health Dept	128.68	DDCI-FICA-MED
		001	Internal Revenue Service	1168	Local Health Maintenance	12000	0610	Health Dept	17.41	DDCI-FICA-MED
		001	Internal Revenue Service	1176	Motor Vehicle Highway	12000	0529	County Highway	901.73	DDCI-FICA-MED
		001	Internal Revenue Service	1189	Recorder's Records Perpet	12000	0004	County Recorder	6.20	DDCI-FICA-MED
		001	Internal Revenue Service	1206	Local Health Dep Trust Acct	12000	0610	Health Dept	13.76	DDCI-FICA-MED
		001	Internal Revenue Service	1222	Statewide 911	12005	0303	Communications Dept (Rad	210.02	DDCI-FICA-MED
		001	Internal Revenue Service	8300	SUPP PH WORKFORCE GRT 93.354	12000	0610	Health Dept	36.68	DDCI-FICA-MED
		001	Internal Revenue Service	8109	Community Vaccine Grant 93.268	12000	0610	Health Dept	10.88	DDCI-FICA-MED

021522_022822 Docket.xlsx

Invoice	Bank	Check	Payee Name 1	Fund	Fund Desc	Acct	Loc	Loc Desc	Amount	Comment
	001		Internal Revenue Service	9131	JCAP 2020-01 Grant (Women's)	12000	0005	County Sheriff	15.74	DDCI-FICA-MED
	001		Internal Revenue Service	4900	Central Comms Center	12005	0303	Communications Dept (Rad	169.61	DDCI-FICA-MED
	001		Internal Revenue Service	5100	0300 Payroll Clearing	00010	0000	No Department	5,611.11	DDCI-FICA-MED
	001		Internal Revenue Service	1000	General	12000	0068	County Commissioners	17,532.72	DDCI-FICA-SS
	001		Internal Revenue Service	1159	Health	12000	0610	Health Dept	550.23	DDCI-FICA-SS
	001		Internal Revenue Service	1168	Local Health Maintenance	12000	0610	Health Dept	74.43	DDCI-FICA-SS
	001		Internal Revenue Service	1176	Motor Vehicle Highway	12000	0529	County Highway	3,855.71	DDCI-FICA-SS
	001		Internal Revenue Service	1189	Recorder's Records Perpet	12000	0004	County Recorder	26.50	DDCI-FICA-SS
	001		Internal Revenue Service	1206	Local Health Dep Trust Acct	12000	0610	Health Dept	58.82	DDCI-FICA-SS
	001		Internal Revenue Service	1222	Statewide 911	12005	0303	Communications Dept (Rad	898.00	DDCI-FICA-SS
	001		Internal Revenue Service	8300	SUPP PH WORKFORCE GRT 93.354	12000	0610	Health Dept	156.85	DDCI-FICA-SS
	001		Internal Revenue Service	8109	Community Vaccine Grant 93.268	12000	0610	Health Dept	46.50	DDCI-FICA-SS
	001		Internal Revenue Service	9131	JCAP 2020-01 Grant (Women's)	12000	0005	County Sheriff	67.31	DDCI-FICA-SS
	001		Internal Revenue Service	4900	Central Comms Center	12005	0303	Communications Dept (Rad	725.21	DDCI-FICA-SS
	001		Internal Revenue Service	5100	0300 Payroll Clearing	00013	0000	No Department	23,992.28	DDCI-FICA-SS
	001		Internal Revenue Service	5100	0300 Payroll Clearing	00012	0000	No Department	35,916.63	DDCI-FED TAX
	001		Internal Revenue Service	1000	General	12000	0068	County Commissioners	4,045.96	DDCI-FICA-MED
	001		Internal Revenue Service	1159	Health	12000	0610	Health Dept	168.42	DDCI-FICA-MED
	001		Internal Revenue Service	1168	Local Health Maintenance	12000	0610	Health Dept	17.41	DDCI-FICA-MED
	001		Internal Revenue Service	1176	Motor Vehicle Highway	12000	0529	County Highway	1,153.69	DDCI-FICA-MED
	001		Internal Revenue Service	1189	Recorder's Records Perpet	12000	0004	County Recorder	6.42	DDCI-FICA-MED
	001		Internal Revenue Service	1206	Local Health Dep Trust Acct	12000	0610	Health Dept	6.52	DDCI-FICA-MED
	001		Internal Revenue Service	1222	Statewide 911	12005	0303	Communications Dept (Rad	205.89	DDCI-FICA-MED
	001		Internal Revenue Service	8300	SUPP PH WORKFORCE GRT 93.354	12000	0610	Health Dept	36.68	DDCI-FICA-MED
	001		Internal Revenue Service	8109	Community Vaccine Grant 93.268	12000	0610	Health Dept	10.88	DDCI-FICA-MED
	001		Internal Revenue Service	9131	JCAP 2020-01 Grant (Women's)	12000	0005	County Sheriff	15.74	DDCI-FICA-MED
	001		Internal Revenue Service	4900	Central Comms Center	12001	0303	Communications Dept (Rad	16.00	DDCI-FICA-MED
	001		Internal Revenue Service	4900	Central Comms Center	12005	0303	Communications Dept (Rad	206.00	DDCI-FICA-MED
	001		Internal Revenue Service	5100	0300 Payroll Clearing	00010	0000	No Department	5,889.61	DDCI-FICA-MED
	001		Internal Revenue Service	1000	General	12000	0068	County Commissioners	17,299.79	DDCI-FICA-SS
	001		Internal Revenue Service	1159	Health	12000	0610	Health Dept	720.16	DDCI-FICA-SS
	001		Internal Revenue Service	1168	Local Health Maintenance	12000	0610	Health Dept	74.43	DDCI-FICA-SS
	001		Internal Revenue Service	1176	Motor Vehicle Highway	12000	0529	County Highway	4,933.06	DDCI-FICA-SS

021522_022822 Docket.xlsx

Invoice	Bank	Check	Payee Name 1	Fund	Fund Desc	Acct	Loc	Loc Desc	Amount	Comment
	001		Internal Revenue Service	1189	Recorder's Records Perpet	12000	0004	County Recorder	27.44	DDCl-FICA-SS
	001		Internal Revenue Service	1206	Local Health Dep Trust Acct	12000	0610	Health Dept	27.90	DDCl-FICA-SS
	001		Internal Revenue Service	1222	Statewide 911	12005	0303	Communications Dept (Rad	880.36	DDCl-FICA-SS
	001		Internal Revenue Service	8300	SUPP PH WORKFORCE GRT 93.354	12000	0610	Health Dept	156.85	DDCl-FICA-SS
	001		Internal Revenue Service	8109	Community Vaccine Grant 93.268	12000	0610	Health Dept	46.50	DDCl-FICA-SS
	001		Internal Revenue Service	9131	JCAP 2020-01 Grant (Women's)	12000	0005	County Sheriff	67.31	DDCl-FICA-SS
	001		Internal Revenue Service	4900	Central Comms Center	12001	0303	Communications Dept (Rad	68.43	DDCl-FICA-SS
	001		Internal Revenue Service	4900	Central Comms Center	12005	0303	Communications Dept (Rad	880.78	DDCl-FICA-SS
	001		Internal Revenue Service	5100	0300 Payroll Clearing	00013	0000	No Department	25,183.01	DDCl-FICA-SS
339-2022-1	001	033382	Invoice Cloud	1000	General	30200	0003	County Treasurer	233.20	YEARLY UPLOAD
5180	001		ITouch Biometrics LLC	1192	Sex & Violent Offender Admin	44500	0005	County Sheriff	2,480.00	WARRANTY SUPP
Uniform allowance 2022	001	220180	Jacob Watson	1170	LIT Public Safety-Cnty Share	22030	0005	County Sheriff	1,345.00	Uniform
Uniform allowance 2022	001	220181	Jamie Cevela	1000	General	22030	0380	Jail	1,050.00	Uniform
Uniform allowance 2022	001	220182	Jared Kirby	1170	LIT Public Safety-Cnty Share	22030	0005	County Sheriff	1,345.00	Uniform
Uniform allowance 2022	001	220183	Jennifer Griffith	1170	LIT Public Safety-Cnty Share	22030	0005	County Sheriff	1,345.00	Uniform
Uniform allowance 2022	001	220184	Jeremy Hughes	1170	LIT Public Safety-Cnty Share	22030	0005	County Sheriff	1,345.00	Uniform
Uniform allowance 2022	001	220185	Jeremy Minor	1170	LIT Public Safety-Cnty Share	22030	0005	County Sheriff	1,345.00	Uniform
66685	001		Journal Review	1216	Auditors Ineligible Deductions	30800	0002	County Auditor	15.44	NOT OF PRELIM
68004	001		Journal Review	1216	Auditors Ineligible Deductions	30800	0002	County Auditor	91.43	CCD HEAR1/31&2/7
68005	001		Journal Review	1216	Auditors Ineligible Deductions	30800	0002	County Auditor	49.10	CBF NOT 1/31&2/7
67920	001		Journal Review	1000	General	30800	0312	Building Dept (Permits)	40.77	ZV 2203
67921	001		Journal Review	1000	General	30800	0312	Building Dept (Permits)	39.63	ZV 2201
67922	001		Journal Review	1000	General	30800	0312	Building Dept (Permits)	44.16	ZONING ORD
67923	001		Journal Review	1000	General	30800	0312	Building Dept (Permits)	40.77	ZV 2202
67843	001		Journal Review	1000	General	30800	0312	Building Dept (Permits)	37.50	REZONE 2.5A
68073	001		Journal Review	2600	Drain Construction/Reconst	65194	0006	County Surveyor	12.17	FINAL NOTICE
68033 NOTICE VACATING LAND	001		Journal Review	1216	Auditors Ineligible Deductions	30800	0002	County Auditor	15.29	VACATING LAND
4274	001		Journal Review	1224	Reassessment	32100	0008	County Assessor	8.82	ANNUAL SESSION
22044256	001	220224	JP Morgan Chase	1000	General	24201	0660	4-D Program (Child Support)	14.99	CALENDAR
22051123	001	220224	JP Morgan Chase	1000	General	24201	0660	4-D Program (Child Support)	144.91	OFFICE SUPPLIES
22168705	001	220224	JP Morgan Chase	1000	General	24201	0660	4-D Program (Child Support)	22.59	TAPE
157195092	001	220224	JP Morgan Chase	1000	General	24201	0660	4-D Program (Child Support)	188.44	OFFICE SUPPLIES
22262020	001	220224	JP Morgan Chase	1000	General	24201	0660	4-D Program (Child Support)	159.93	OFFICE SUPPLIES

021522_022822 Docket.xlsx

Invoice	Bank	Check	Payee Name 1	Fund	Fund Desc	Acct	Loc	Loc Desc	Amount	Comment
22337015		001	220224 JP Morgan Chase	1000	General	24201	0660	4-D Program (Child Support)	71.96	OFFICE SUPPLIES
22061643		001	220224 JP Morgan Chase	1000	General	24201	0660	4-D Program (Child Support)	143.97	FOLDERS
3093644832		001	220224 JP Morgan Chase	1000	General	32100	0660	4-D Program (Child Support)	46.00	DEC21 LEXISNEXIS
3093586275		001	220224 JP Morgan Chase	1000	General	32100	0660	4-D Program (Child Support)	46.00	NOV21 LEXISNEXIS
3093519045		001	220224 JP Morgan Chase	1000	General	32100	0660	4-D Program (Child Support)	46.00	OCT21 LEXISNEXIS
5567088197573388		001	220225 JP Morgan Chase	4900	Central Comms Center	30050	0303	Communications Dept (Rad	121.25	COMCAST 1 OF 2
5567088197573388		001	220225 JP Morgan Chase	4900	Central Comms Center	30050	0303	Communications Dept (Rad	111.85	COMCAST 2 OF 2
5567088197573388		001	220225 JP Morgan Chase	4900	Central Comms Center	33500	0303	Communications Dept (Rad	700.00	NENA DUES
5567088197573388		001	220225 JP Morgan Chase	4900	Central Comms Center	33500	0303	Communications Dept (Rad	22.42	TRAINING LUNCH
5567088197573388		001	220225 JP Morgan Chase	4900	Central Comms Center	33500	0303	Communications Dept (Rad	29.43	WORKING LUNCH
5567088197573388		001	220225 JP Morgan Chase	4900	Central Comms Center	32100	0303	Communications Dept (Rad	12.99	PRIME SVC MONTH
5567088197573388		001	220224 JP Morgan Chase	4900	Central Comms Center	20009	0303	Communications Dept (Rad	603.46	JACKETS
855300027		001	220224 JP Morgan Chase	1000	General	30100	0007	County Coroner	333.82	BATTERIES
5567088197573388		001	220225 JP Morgan Chase	4900	Central Comms Center	44500	0303	Communications Dept (Rad	270.55	PHONE SUPPLIES
381		001	220225 JP Morgan Chase	4900	Central Comms Center	24201	0303	Communications Dept (Rad	11.60	POSTAGE
2714015		001	220225 JP Morgan Chase	4900	Central Comms Center	24201	0303	Communications Dept (Rad	5.35	OFFICE SUPPLIES
2650		001	220224 JP Morgan Chase	4900	Central Comms Center	24201	0303	Communications Dept (Rad	58.97	OFFICE SUPPLIES
4514750		001	220225 JP Morgan Chase	4900	Central Comms Center	24201	0303	Communications Dept (Rad	69.40	FLOUR BULBS
26915146		001	220225 JP Morgan Chase	4900	Central Comms Center	24201	0303	Communications Dept (Rad	14.71	OFFICE SUPPLIES
526		001	220225 JP Morgan Chase	4900	Central Comms Center	24201	0303	Communications Dept (Rad	27.85	USPS-RETURN
5550036136108301		001	220225 JP Morgan Chase	4900	Central Comms Center	30148	0303	Communications Dept (Rad	51.40	FRONTIER SVC
99285		001	220224 JP Morgan Chase	1000	General	30127	9655	Emergency Response	46.90	MEM TREE
019773		001	220224 JP Morgan Chase	2100	Supplemental Adult Prob Svcs	24203	0235	Probation	23.97	OFFICE SUPPLIES
46232		001	220225 JP Morgan Chase	9156	DFMCC Drug Free LCC 21/22	30184	0235	Probation	400.00	JAN ELEC
4472ACF110		001	220225 JP Morgan Chase	9156	DFMCC Drug Free LCC 21/22	30184	0235	Probation	419.93	MOTEL 6
474132719509 CREDIT -7.77		001	220225 JP Morgan Chase	9178	FY22 DOC PROBATION GRANT	21909	0235	Probation	110.99	BATH & BODY
BE9VOSMOBYEW		001	220224 JP Morgan Chase	2100	Supplemental Adult Prob Svcs	33500	0235	Probation	125.00	POPAI MGT 2022
02664		001	220225 JP Morgan Chase	8172	FY22 SIM Grant 93.788	24205	0235	Probation	204.94	DEBIT CARDS
1313098		001	220225 JP Morgan Chase	8172	FY22 SIM Grant 93.788	24205	0235	Probation	40.00	FUEL CARD
1443583		001	220225 JP Morgan Chase	8172	FY22 SIM Grant 93.788	24205	0235	Probation	160.00	GIFT CARDS
1157014		001	220225 JP Morgan Chase	4905	Court Referral	24201	0235	Probation	49.99	OFFICE SUPPLY
1157014		001	220225 JP Morgan Chase	9106	FY22 Family Recovery Ct Grt	24205	0235	Probation	224.04	OFFICE SUPPLIES
079475		001	220225 JP Morgan Chase	9178	FY22 DOC PROBATION GRANT	21909	0235	Probation	22.00	OFFICE MEETING

021522_022822 Docket.xlsx

Invoice	Bank	Check	Payee Name 1	Fund	Fund Desc	Acct	Loc	Loc Desc	Amount	Comment
041148		001	220225 JP Morgan Chase	9178	FY22 DOC PROBATION GRANT	21909	0235	Probation	49.00	EMP INCENTIVE
009894		001	220225 JP Morgan Chase	9156	DFMCC Drug Free LCC 21/22	30181	0235	Probation	26.00	GIFT CARD
035232		001	220225 JP Morgan Chase	9156	DFMCC Drug Free LCC 21/22	30181	0235	Probation	25.00	GIFT CARD
011963		001	220225 JP Morgan Chase	9156	DFMCC Drug Free LCC 21/22	30181	0235	Probation	75.00	GIFT CARDS
121621		001	220224 JP Morgan Chase	2100	Supplemental Adult Prob Svcs	33500	0235	Probation	25.00	KNIGHTS INN
1216212		001	220224 JP Morgan Chase	2100	Supplemental Adult Prob Svcs	33500	0235	Probation	50.00	KNIGHTS INN
1216213		001	220224 JP Morgan Chase	2100	Supplemental Adult Prob Svcs	33500	0235	Probation	101.00	KNIGHTS INN
0122-6138		001	220224 JP Morgan Chase	1216	Auditors Ineligible Deductions	30050	0002	County Auditor	10.00	LOGMEIN
010122-123122		001	220224 JP Morgan Chase	1000	General	32100	0201	Superior Court #1	275.00	BAR ASSOCIATION
8787469		001	220224 JP Morgan Chase	1000	General	24201	0201	Superior Court #1	85.15	PRIV SCREEN
8690623		001	220224 JP Morgan Chase	1000	General	24201	0201	Superior Court #1	53.49	SPEAKERS
393R28		001	220224 JP Morgan Chase	1000	General	30001	0201	Superior Court #1	580.96	SOUTHWEST
35JYE		001	220224 JP Morgan Chase	1000	General	30001	0201	Superior Court #1	221.96	SOUTHWEST
0201-011822		001	220224 JP Morgan Chase	1000	General	30001	0201	Superior Court #1	39.75	PARKSLEEPFLY
35JYE		001	220224 JP Morgan Chase	1000	General	30001	0201	Superior Court #1	224.00	SOUTHWEST
2680524		001	220224 JP Morgan Chase	1000	General	30001	0201	Superior Court #1	164.19	PARKSLEEPFLY
4263456		001	220224 JP Morgan Chase	1000	General	30256	0201	Superior Court #1	148.52	MATTRESS
5987460		001	220224 JP Morgan Chase	1000	General	30256	0201	Superior Court #1	96.30	MATTRESS
29343378		001	220224 JP Morgan Chase	1176	Motor Vehicle Highway	33500	0529	County Highway	96.00	HOTEL
49988		001	220224 JP Morgan Chase	1176	Motor Vehicle Highway	23523	0529	County Highway	90.00	VEHICLE TITLES
8572-0122		001	220224 JP Morgan Chase	1000	General	30044	0104	Election Expense	3.25	PARKING FEE
550629200609127		001	220224 JP Morgan Chase	1000	General	21850	0313	Building Maintenance	173.98	GLOVES/OIL
05410192013110512		001	220224 JP Morgan Chase	1000	General	24201	0312	Building Dept (Permits)	77.48	OFFICE SUPPLIES
W77490		001	220224 JP Morgan Chase	1176	Motor Vehicle Highway	33450	0529	County Highway	115.89	MAINT/REPAIR
1420857		001	220224 JP Morgan Chase	1000	General	30095	9616	IT	21.00	JAN 22 JOINK
05371365600075985		001	220225 JP Morgan Chase	8903	Community COVID Testing Grant	22019	0610	Health Dept	26.35	POSTAGE
32862007200551142		001	220225 JP Morgan Chase	8903	Community COVID Testing Grant	22019	0610	Health Dept	126.09	SUPPLIES
36842013500119050		001	220225 JP Morgan Chase	8903	Community COVID Testing Grant	22019	0610	Health Dept	8.50	TRASH BAGS
32862021200700564		001	220225 JP Morgan Chase	8903	Community COVID Testing Grant	22019	0610	Health Dept	426.58	COVID SUPPLIES
32862005200043786		001	220224 JP Morgan Chase	1159	Health	44440	0610	Health Dept	25.00	INTUIT JAN22
8390201600003186		001	220224 JP Morgan Chase	1159	Health	44440	0610	Health Dept	25.00	10T08 JAN22
36872002160026259 ACCT# 1614581		001	220224 JP Morgan Chase	1000	General	31032	9616	IT	163.00	DEC 2021
1593827		001	220224 JP Morgan Chase	1138	Cumulative Capital Development	30650	0068	County Commissioners	83.96	DEAD CROW DEVO

021522_022822 Docket.xlsx

Invoice	Bank	Check	Payee Name 1	Fund	Fund Desc	Acct	Loc	Loc Desc	Amount	Comment
1300206		001	220224 JP Morgan Chase	1138	Cumulative Capital Development	30650	0068	County Commissioners	159.43	BIRDBUFFER
9042626		001	220224 JP Morgan Chase	1138	Cumulative Capital Development	30650	0068	County Commissioners	208.09	BIRD B GONE
29502015852573154		001	220224 JP Morgan Chase	1159	Health	30050	0610	Health Dept	360.00	SFP SVC
54971565		001	220224 JP Morgan Chase	1159	Health	30050	0610	Health Dept	20.10	INDEED DEC 2021
101921-010622		001	033350 Justice & Pyle Attorneys Law	1000	General	30115	0271	Public Defender	666.00	CONFLICT CASE
TAXSALE SURPLUS DISBURSEMENT 06-26-444-037.000-024		001	033402 Justin D. Long	1205	Tax Sale Surplus	31210	0002	County Auditor	79,586.25	542000075
Uniform allowance 2022		001	220186 Kevin Crull	1170	LIT Public Safety-Cnty Share	22030	0005	County Sheriff	1,345.00	Uniform
IN182705		001	Kieslers Police Supply Inc	1156	Firearms Training	24202	0005	County Sheriff	7,868.10	AMMO
		001	033383 Krissi Harpel	1201	Surplus Tax	50001	0003	County Treasurer	399.10	TAX SURPLUS
Uniform allowance 2022		001	220187 Kyle Proctor	1170	LIT Public Safety-Cnty Share	22030	0005	County Sheriff	1,050.00	Uniform
		001	220123 Ladoga Clerk Treasurer	7330	LIT Local Income Tax	50000	0002	County Auditor	5,517.33	FEB 2022
		001	220109 Ladoga Clerk Treasurer	7331	LIT Public Safety Fund	50000	0002	County Auditor	3,826.00	SUB SAF 02 2022
		001	220124 Ladoga Public Library	7330	LIT Local Income Tax	50000	0002	County Auditor	1,636.50	FEB 2022
Uniform allowance 2022		001	220188 Laren Myers	1170	LIT Public Safety-Cnty Share	22030	0005	County Sheriff	1,050.00	Uniform
Uniform allowance 2022		001	220189 Lauren Little	1000	General	22030	0380	Jail	1,050.00	Uniform
93089225204		001	Lawson Products Inc.	1176	Motor Vehicle Highway	23523	0529	County Highway	300.47	SUPPLIES
Uniform allowance 2022		001	220190 Layton Kiger	1000	General	22030	0380	Jail	87.50	Uniform
		001	033351 Legal Shield	5100	0300 Payroll Clearing	00021	0000	No Department	103.60	FEB 2022
		001	220125 Linden Public Library	7330	LIT Local Income Tax	50000	0002	County Auditor	2,531.67	FEB 2022
1994		001	Lion Shield LLC	2100	Supplemental Adult Prob Svcs	33500	0235	Probation	215.00	TRAINING
19942		001	Lion Shield LLC	2100	Supplemental Adult Prob Svcs	33500	0235	Probation	215.00	TRAINING
19943		001	Lion Shield LLC	2100	Supplemental Adult Prob Svcs	33500	0235	Probation	215.00	TRAINING
19944		001	Lion Shield LLC	2100	Supplemental Adult Prob Svcs	33500	0235	Probation	215.00	TRAINING
19945		001	Lion Shield LLC	2100	Supplemental Adult Prob Svcs	33500	0235	Probation	215.00	TRAINING
Uniform allowance 2022		001	220191 Lori Felker	1000	General	22030	0380	Jail	1,050.00	Uniform
Uniform allowance 2022		001	220192 Loudella Wilson	1170	LIT Public Safety-Cnty Share	22030	0005	County Sheriff	1,050.00	Uniform
594051288		001	M.A.I.L., Inc.	1224	Reassessment	32010	0008	County Assessor	375.45	POSTAGE
		001	220126 Madison Township Trustee	7330	LIT Local Income Tax	50000	0002	County Auditor	5,147.67	FEB 2022
70714		001	220227 Magic Glass Holdings LLC	1170	LIT Public Safety-Cnty Share	30100	0005	County Sheriff	22.18	WINDSHLD TINT
		001	033384 Mark Hutcheson	1000	General	30028	0313	Building Maintenance	1,500.00	JAN 2022
Uniform allowance 2022		001	220193 Matt Mccarty	1170	LIT Public Safety-Cnty Share	22030	0005	County Sheriff	1,345.00	Uniform
29879671		001	033352 Matthew Bender & Co Inc	1000	General	20150	0009	Prosecuting Attorney	371.31	JURY INSTRU21A
29879671		001	033385 Matthew Bender & Co Inc	1000	General	20150	0009	Prosecuting Attorney	9.00	JURY INSTR

021522_022822 Docket.xlsx

Invoice	Bank	Check	Payee Name 1	Fund	Fund Desc	Acct	Loc	Loc Desc	Amount	Comment
Uniform allowance 2022	001	220194	Matthew Kadinger	1000	General	22030	0380	Jail	87.50	Uniform
	001		McCready & Keene	5100	0300 Payroll Clearing	00023	0000	No Department	1,952.85	DDCI-SHERIFFVOL
	001		McCready & Keene	5100	0300 Payroll Clearing	00051	0000	No Department	312.30	DDCI-CIV457%
	001		McCready & Keene	5100	0300 Payroll Clearing	00030	0000	No Department	400.00	DDCI-SHROTH
	001		McCready & Keene	5100	0300 Payroll Clearing	00023	0000	No Department	298.14	DDCI-SHERVOL %
	001		McCready & Keene	5100	0300 Payroll Clearing	00023	0000	No Department	1,667.00	DDCI-SHERIFFVOL
	001		McCready & Keene	5100	0300 Payroll Clearing	00051	0000	No Department	326.46	DDCI-CIV457%
	001		McCready & Keene	5100	0300 Payroll Clearing	00030	0000	No Department	400.00	DDCI-SHROTH
38419224	001		McKesson Medical-surgical	1000	General	20003	0380	Jail	228.07	PILL CRUSHER
Uniform allowance 2022	001	220195	Mercedes Cork-Nine	1000	General	22030	0380	Jail	1,050.00	Uniform
1696226	002		Metro Fibernet Llc	1000	General	30036	0068	County Commissioners	94.71	JAN
1327117	001		Metro Fibernet Llc	1000	General	30036	9655	Emergency Response	609.91	021422-031322
0002	001	033401	Metropolitan Life Insurance Co	5100	0300 Payroll Clearing	00040	0000	No Department	832.88	W/E 02182022
002	001	033401	Metropolitan Life Insurance Co	5100	0300 Payroll Clearing	00016	0000	No Department	7,293.54	W/E 02182022
003	001	033401	Metropolitan Life Insurance Co	1000	General	12080	0068	County Commissioners	6,485.60	W/E 02182022
001	001	033401	Metropolitan Life Insurance Co	1000	General	12055	0068	County Commissioners	686.40	W/E 02182022
Uniform allowance 2022	001	220196	Michael Kersey	1170	LIT Public Safety-Cnty Share	22030	0005	County Sheriff	1,345.00	Uniform
104241	001		Michigantown Stone Company	1173	MVH Restricted Fund	20015	0529	County Highway	13,691.18	8 GRAVEL
122092	001		Michigantown Stone Company	1173	MVH Restricted Fund	20015	0529	County Highway	8,497.28	PEA GRAVEL
27697	001		Midwest Electric Motor Inc.	1000	General	30500	0380	Jail	700.00	REBUILT MOTORS
2025T-17	001		Midwest Gang Investigators	1170	LIT Public Safety-Cnty Share	33500	0005	County Sheriff	25.00	MCSO TRAINING
01312022	001	033386	Mike Spencer	9144	FY22 Veterans Treatment Ct Grt	30173	0235	Probation	500.00	JAN22 SVC
121521	001	033386	Mike Spencer	9144	FY22 Veterans Treatment Ct Grt	30002	0235	Probation	81.38	OFFICE SUPPLIES
207555	001	033386	Mike Spencer	9144	FY22 Veterans Treatment Ct Grt	30002	0235	Probation	16.48	MENTOR MEETING
Uniform allowance 2022	001	220197	Mike Taylor	1170	LIT Public Safety-Cnty Share	22030	0005	County Sheriff	1,345.00	Uniform
Uniform allowance 2022	001	220198	Monica Phillips	1000	General	22030	0380	Jail	1,050.00	Uniform
025785 REIMB	001		Mont Cnty Soil & Water Conserv	1000	General	22002	0750	Soil Conservation (Soil & Wate	40.00	STAMPS
	001	033336	Mont Cnty Treasurer	7330	LIT Local Income Tax	50000	0002	County Auditor	326,622.40	FEB 2022
	001	033333	Mont Cnty Treasurer	7331	Lit Public Safety Fund	50000	0002	County Auditor	226,494.25	SUB SAF 02 2022
	001		Mont Cnty Treasurer	1000	General	12065	0068	County Commissioners	3,635.10	DDCI-HSASaving
	001		Mont Cnty Treasurer	1176	Motor Vehicle Highway	12065	0529	County Highway	778.95	DDCI-HSASaving
	001		Mont Cnty Treasurer	1222	Statewide 911	12065	0303	Communications Dept (Rad	201.95	DDCI-HSASaving
	001		Mont Cnty Treasurer	4900	Central Comms Center	12065	0303	Communications Dept (Rad	144.25	DDCI-HSASaving

021522_022822 Docket.xlsx

Invoice	Bank	Check	Payee Name 1	Fund	Fund Desc	Acct	Loc	Loc Desc	Amount	Comment
	001		Mont Cnty Treasurer	5100	0300 Payroll Clearing	00027	0000	No Department	3,201.52	DDCI-HSA-VOL
02182022	001	033400	Mont Cnty Treasurer	1224	Reassessment	11688	0008	County Assessor	2,500.00	CERTIFICATION
	001		Mont Cnty Treasurer	1000	General	12065	0068	County Commissioners	3,606.25	DDCI-HSASaving
	001		Mont Cnty Treasurer	1176	Motor Vehicle Highway	12065	0529	County Highway	778.95	DDCI-HSASaving
	001		Mont Cnty Treasurer	1222	Statewide 911	12065	0303	Communications Dept (Rad	201.95	DDCI-HSASaving
	001		Mont Cnty Treasurer	4900	Central Comms Center	12065	0303	Communications Dept (Rad	144.25	DDCI-HSASaving
	001		Mont Cnty Treasurer	5100	0300 Payroll Clearing	00027	0000	No Department	3,201.52	DDCI-HSA-VOL
02012022	001		Mont Cnty Treasurer	1000	General	30003	0001	Clerk of Circuit	2,940.00	JAN22 PPS SVD
0212022 -1647.00 FOR CLERK	001		Mont Cnty Treasurer	1000	General	30003	0001	Clerk of Circuit	1,580.00	JAN22 PPS SVD
01312022 REIMB EC GRP INS	001		Montgomery Co Commissioners	9177	FY22 DOC DRUG CT GRANT	12050	0235	Probation	725.86	JAN 2022
1312022 REIMB JY GRP INS	001		Montgomery Co Commissioners	9144	FY22 Veterans Treatment Ct Grt	12050	0235	Probation	725.86	JAN 2022
01312022 REIMB HC GRP INS	001		Montgomery Co Commissioners	9178	FY22 DOC PROBATION GRANT	12050	0235	Probation	725.86	JAN 2022
01312022 REIMB FM GRP INS	001		Montgomery Co Commissioners	9178	FY22 DOC PROBATION GRANT	12050	0235	Probation	725.86	JAN 2022
01312022 REIMB RO GRP INS	001		Montgomery Co Commissioners	9106	FY22 Family Recovery Ct Grt	12050	0235	Probation	725.86	JAN 2022
01312022 REIMB FICA HC	001		Montgomery Co Commissioners	9178	FY22 DOC PROBATION GRANT	12005	0235	Probation	344.33	JAN 2022
01312022 REIMB FICA FM	001		Montgomery Co Commissioners	9178	FY22 DOC PROBATION GRANT	12005	0235	Probation	304.67	JAN 2022
01312022 REIMB FICA RO	001		Montgomery Co Commissioners	9106	FY22 Family Recovery Ct Grt	12005	0235	Probation	428.60	JAN 2022
01312022 REIMB FICA EC	001		Montgomery Co Commissioners	9177	FY22 DOC DRUG CT GRANT	12005	0235	Probation	329.33	JAN 2022
01312022 REIMB INPRS EC	001		Montgomery Co Commissioners	9177	FY22 DOC DRUG CT GRANT	12005	0235	Probation	482.16	JAN 2022
1312022 REIMB INPRS JY	001		Montgomery Co Commissioners	9144	FY22 Veterans Treatment Ct Grt	12005	0235	Probation	627.48	JAN 2022
01312022 REIMB INPRS RO	001		Montgomery Co Commissioners	9106	FY22 Family Recovery Ct Grt	12005	0235	Probation	593.26	JAN 2022
01312022 REIMB INPRS HC	001		Montgomery Co Commissioners	9178	FY22 DOC PROBATION GRANT	12005	0235	Probation	504.12	JAN 2022
01312022 REIMB INPRS FM	001		Montgomery Co Commissioners	9178	FY22 DOC PROBATION GRANT	12005	0235	Probation	446.05	JAN 2022
01312022 REIMB FICA RO	001		Montgomery Co Commissioners	9106	FY22 Family Recovery Ct Grt	12005	0235	Probation	405.28	JAN 2022
02112022	001		Montgomery Co Health Dept	1148	Drug Free Community	30130	0610	Health Dept	8,436.00	LCC ADMIN FUNDS
	001		Montgomery Co Self-Insurance	1000	General	12050	0068	County Commissioners	50,984.46	DDCI-GPAHEALTHC
	001		Montgomery Co Self-Insurance	1176	Motor Vehicle Highway	12050	0529	County Highway	10,905.66	DDCI-GPAHEALTHC
	001		Montgomery Co Self-Insurance	1222	Statewide 911	12050	0303	Communications Dept (Rad	2,688.69	DDCI-GPAHEALTHC
	001		Montgomery Co Self-Insurance	8300	SUPP PH WORKFORCE GRT 93.354	12050	0610	Health Dept	335.01	DDCI-GPAHEALTHC
	001		Montgomery Co Self-Insurance	9131	JCAP 2020-01 Grant (Women's)	12050	0005	County Sheriff	689.41	DDCI-GPAHEALTHC
	001		Montgomery Co Self-Insurance	4900	Central Comms Center	12050	0303	Communications Dept (Rad	1,675.05	DDCI-GPAHEALTHC
	001		Montgomery Co Self-Insurance	1000	General	12050	0068	County Commissioners	50,649.45	DDCI-GPAHEALTHC
	001		Montgomery Co Self-Insurance	1176	Motor Vehicle Highway	12050	0529	County Highway	10,905.66	DDCI-GPAHEALTHC

021522_022822 Docket.xlsx

Invoice	Bank	Check	Payee Name 1	Fund	Fund Desc	Acct	Loc	Loc Desc	Amount	Comment
	001		Montgomery Co Self-Insurance	1222	Statewide 911	12050	0303	Communications Dept (Rad	2,688.69	DDCI-GPAHEALTHC
	001		Montgomery Co Self-Insurance	8300	SUPP PH WORKFORCE GRT 93.354	12050	0610	Health Dept	335.01	DDCI-GPAHEALTHC
	001		Montgomery Co Self-Insurance	9131	JCAP 2020-01 Grant (Women's)	12050	0005	County Sheriff	689.41	DDCI-GPAHEALTHC
	001		Montgomery Co Self-Insurance	4900	Central Comms Center	12050	0303	Communications Dept (Rad	1,675.05	DDCI-GPAHEALTHC
	001	033387	Montgomery Co Youth Svc Bureau	1000	General	30063	0232	Circuit Court	5,250.00	FEB 2022
REIMB CASA GRANT	001	033387	Montgomery Co Youth Svc Bureau	1211	Guardian Ad Litem	50000	0232	Circuit Court	792.72	JAN 2022
	001	333362	Montgomery County Clerk	5100	0300 Payroll Clearing	00024	0000	No Department	25.00	DDCI-GARN
	001		Montgomery County Clerk	5100	0300 Payroll Clearing	00024	0000	No Department	25.00	DDCI-GARN
01312022	001		Montgomery County Probation	9156	DFMCC Drug Free LCC 21/22	30179	0235	Probation	45.00	DRUG TEST
01312022	001		Montgomery County Probation	9156	DFMCC Drug Free LCC 21/22	30179	0235	Probation	60.00	DRUG TEST
01312022	001		Montgomery County Probation	9156	DFMCC Drug Free LCC 21/22	30179	0235	Probation	120.00	DRUG TEST
02142022 JUV MRT	001		Montgomery County Probation	9156	DFMCC Drug Free LCC 21/22	30902	0235	Probation	200.00	MRT CLASS
02042022 CQ	001		Montgomery County Probation	9156	DFMCC Drug Free LCC 21/22	30902	0235	Probation	200.00	MRT CLASS
IN06-0000277196	001		Motion Industries Inc	1176	Motor Vehicle Highway	23523	0529	County Highway	80.80	ROLLER CHAIN
Uniform allowance 2022	001	220199	Nathaniel Fletcher	1000	General	22030	0380	Jail	1,050.00	Uniform
Uniform allowance 2022	001	220200	Nema Lowe	1000	General	22030	0380	Jail	1,050.00	Uniform
	001	220127	New Richmond Clk Treasurer	7330	LIT Local Income Tax	50000	0002	County Auditor	2,352.00	FEB 2022
	001	220110	New Richmond Clk Treasurer	7331	Lit Public Safety Fund	50000	0002	County Auditor	1,631.00	SUB SAF 02 2022
	001	220128	New Ross Clk Treasurer	7330	LIT Local Income Tax	50000	0002	County Auditor	1,069.42	FEB 2022
	001	220111	New Ross Clk Treasurer	7331	Lit Public Safety Fund	50000	0002	County Auditor	741.58	SUB SAF 02 2022
Uniform allowance 2022	001	220201	Nisha Swank	1000	General	22030	0380	Jail	1,050.00	Uniform
Uniform allowance 2022	001	220202	Paula Greene	1000	General	22030	0380	Jail	1,050.00	Uniform
820071946	001	033388	Pomp's Tire Service Inc.	1176	Motor Vehicle Highway	23522	0529	County Highway	602.54	TIRE/INSTALL
820072167	001	033388	Pomp's Tire Service Inc.	1176	Motor Vehicle Highway	23522	0529	County Highway	34.15	TIRE REPAIR
820072207	001	033388	Pomp's Tire Service Inc.	1176	Motor Vehicle Highway	23522	0529	County Highway	24.70	TIRE REPAIR
2022DUES2	001		POPAL	9178	FY22 DOC PROBATION GRANT	32100	0235	Probation	180.05	2022 DUES
02082022	001		Pre Trial Diversion	7457	1152 Clk User Fee	50000	0001	Clerk of Circuit	4,612.00	DEFERRAL PRO
	001		Public Empls Retirement Fd	1176	Motor Vehicle Highway	12020	0529	County Highway	7,218.62	DDCI-INPRS-HWY
	001		Public Empls Retirement Fd	5100	0300 Payroll Clearing	00011	0000	No Department	1,933.56	DDCI-INPRS-HWY
	001		Public Empls Retirement Fd	1000	General	12020	0068	County Commissioners	24,342.02	DDCI-INPRS
	001		Public Empls Retirement Fd	1159	Health	12020	0610	Health Dept	919.24	DDCI-INPRS
	001		Public Empls Retirement Fd	1168	Local Health Maintenance	12020	0610	Health Dept	138.28	DDCI-INPRS
	001		Public Empls Retirement Fd	1222	Statewide 911	12005	0303	Communications Dept (Rad	1,729.02	DDCI-INPRS

021522_022822 Docket.xlsx

Invoice	Bank	Check	Payee Name 1	Fund	Fund Desc	Acct	Loc	Loc Desc	Amount	Comment
	001		Public Empls Retirement Fd	8300	SUPP PH WORKFORCE GRT 93.354	12020	0610	Health Dept	288.62	DDCI-INPRS
	001		Public Empls Retirement Fd	9131	JCAP 2020-01 Grant (Women's)	12020	0005	County Sheriff	154.00	DDCI-INPRS
	001		Public Empls Retirement Fd	4900	Central Comms Center	12005	0303	Communications Dept (Rad	1,359.82	DDCI-INPRS
	001		Public Empls Retirement Fd	5100	0300 Payroll Clearing	00011	0000	No Department	7,749.38	DDCI-INPRS
	001		Public Empls Retirement Fd	5100	0300 Payroll Clearing	00011	0000	No Department	288.12	DDCI-PERFVOL2
	001		Public Empls Retirement Fd	5100	0300 Payroll Clearing	00011	0000	No Department	1,685.15	DDCI-PERFVOL
	001		Public Empls Retirement Fd	1176	Motor Vehicle Highway	12020	0529	County Highway	9,346.93	DDCI-INPRS-HWY
	001		Public Empls Retirement Fd	5100	0300 Payroll Clearing	00011	0000	No Department	2,503.64	DDCI-INPRS-HWY
	001		Public Empls Retirement Fd	1000	General	12020	0068	County Commissioners	24,210.00	DDCI-INPRS
	001		Public Empls Retirement Fd	1159	Health	12020	0610	Health Dept	1,181.85	DDCI-INPRS
	001		Public Empls Retirement Fd	1168	Local Health Maintenance	12020	0610	Health Dept	138.28	DDCI-INPRS
	001		Public Empls Retirement Fd	1222	Statewide 911	12005	0303	Communications Dept (Rad	1,697.15	DDCI-INPRS
	001		Public Empls Retirement Fd	8300	SUPP PH WORKFORCE GRT 93.354	12020	0610	Health Dept	288.62	DDCI-INPRS
	001		Public Empls Retirement Fd	9131	JCAP 2020-01 Grant (Women's)	12020	0005	County Sheriff	154.00	DDCI-INPRS
	001		Public Empls Retirement Fd	4900	Central Comms Center	12005	0303	Communications Dept (Rad	1,640.89	DDCI-INPRS
	001		Public Empls Retirement Fd	4900	Central Comms Center	12025	0303	Communications Dept (Rad	123.62	DDCI-INPRS
	001		Public Empls Retirement Fd	5100	0300 Payroll Clearing	00011	0000	No Department	7,884.27	DDCI-INPRS
	001		Public Empls Retirement Fd	5100	0300 Payroll Clearing	00011	0000	No Department	304.38	DDCI-PERFVOL2
	001		Public Empls Retirement Fd	5100	0300 Payroll Clearing	00011	0000	No Department	1,826.12	DDCI-PERFVOL
2909	001		PUTNAM COUNTY AGGREGATES INC	1135	Cumulative Bridge	24202	0529	County Highway	846.13	#53 STONE
2972	001		PUTNAM COUNTY AGGREGATES INC	1173	MVH Restricted Fund	20015	0529	County Highway	1,484.60	#5 STONE
21709461	001	220141	Quill Corp	1000	General	24201	0009	Prosecuting Attorney	22.49	THUMB DRIVES
22424354	001	220141	Quill Corp	1000	General	20001	0380	Jail	472.47	GLOVES
22552729	001	220221	Quill Corp	1216	Auditors Ineligible Deductions	24201	0002	County Auditor	53.10	OFFICE SUPPLIES
22559683	001	220221	Quill Corp	1216	Auditors Ineligible Deductions	24201	0002	County Auditor	26.55	FOLDERS
22577739	001	220221	Quill Corp	1216	Auditors Ineligible Deductions	24201	0002	County Auditor	380.79	OFFICE SUPPLIES
22468532	001		Quill Corp	9106	FY22 Family Recovery Ct Grt	24205	0235	Probation	238.18	OFFICE SUPPLIES
22468532	001		Quill Corp	2100	Supplemental Adult Prob Svcs	24201	0235	Probation	202.02	OFFICE SUPPLIES
22542627	001		Quill Corp	1000	General	24201	0201	Superior Court #1	47.78	SUPPLIES
22537814	001		Quill Corp	1000	General	24201	0201	Superior Court #1	10.98	SUPPLIES
22692462	001		Quill Corp	1000	General	24201	0201	Superior Court #1	29.41	SUPPLIES
22581487	001		Quill Corp	4900	Central Comms Center	24201	0303	Communications Dept (Rad	91.69	SUPPLIES
22609136	001		Quill Corp	4900	Central Comms Center	24201	0303	Communications Dept (Rad	22.44	supplies

021522_022822 Docket.xlsx

Invoice	Bank	Check	Payee Name 1	Fund	Fund Desc	Acct	Loc	Loc Desc	Amount	Comment
22609584		001	Quill Corp	4900	Central Comms Center	24201	0303	Communications Dept (Rad	27.24	SUPPLIES
22577905		001	Quill Corp	1000	General	24201	0202	Superior Court #2	23.53	SUPPLIES
22661067		001	Quill Corp	1000	General	20001	0380	Jail	157.49	GLOVES
22580158		001	Quill Corp	1000	General	24201	0380	Jail	140.45	SUPPLIES
22615635		001	Quill Corp	1000	General	24201	0380	Jail	98.97	PAPER
22661067		001	Quill Corp	1000	General	24201	0380	Jail	255.75	SUPPLIES
22658266		001	Quill Corp	9106	FY22 Family Recovery Ct Grt	24205	0235	Probation	489.31	OFFICE SUPPLIES
22664399		001	Quill Corp	9106	FY22 Family Recovery Ct Grt	24205	0235	Probation	14.80	PLEDGE
22687259		001	Quill Corp	9106	FY22 Family Recovery Ct Grt	24205	0235	Probation	1.41	RULER
22298438 CREDIT MEMO 22658266 16.94		001	Quill Corp	2100	Supplemental Adult Prob Svcs	24201	0235	Probation	102.75	SUPPLIES
22793355		001	Quill Corp	4900	Central Comms Center	24201	0303	Communications Dept (Rad	489.97	CHAIRS/MAT
22761531		001	Quill Corp	1000	General	24201	0380	Jail	138.32	PENS/FOLDERS
22761531		001	Quill Corp	1170	LIT Public Safety-Cnty Share	20400	0005	County Sheriff	111.89	DATASTICKS/BATT
22823836		001	Quill Corp	1216	Auditors Ineligible Deductions	24201	0002	County Auditor	197.88	COPY PAPER
158242269		001	Quill Corp	1000	General	24201	0003	County Treasurer	252.95	OFFICE SUPPLIES
106858		001	Rapid Reproductions Inc.	4915	Mapping Fees	20027	0753	GIS/Mapping	415.95	SPECIAL PAPER
106542		001	Rapid Reproductions Inc.	4915	Mapping Fees	20027	0753	GIS/Mapping	79.89	FEB 22 MAINT
11-12-221-029.000-025		001	033411 Ratcliff Inc	1201	Surplus Tax	50001	0003	County Treasurer	42.02	SURPLUS
2174200		001	Ray O'herron Co Inc	8130	Bulletproof Vest Grant	44500	0005	County Sheriff	558.00	UNIFORM
2174200		001	Ray O'herron Co Inc	1170	LIT Public Safety-Cnty Share	22030	0005	County Sheriff	1,339.79	MITCHELL UNI
01585520221		001	033412 Redwood Toxicology Laboratory	4950	Sheriff Work Release	30160	0005	County Sheriff	35.01	MED SCREENS
761718		001	Redwood Toxicology Laboratory	9106	FY22 Family Recovery Ct Grt	20065	0235	Probation	150.00	TESTING SUPPLIES
Uniform allowance 2022		001	220203 Regina Dodds	1000	General	22030	0380	Jail	1,050.00	Uniform
236714		001	033356 Reliable Exterminators, Inc	1000	General	30127	9655	Emergency Response	60.00	10/1121 INSIDE S
237818		001	033356 Reliable Exterminators, Inc	1000	General	30127	9655	Emergency Response	100.00	BI/ANN SVC
0694-002861097		001	033389 Republic Services #786	1000	General	30035	0068	County Commissioners	22.00	FEB 2022
0786-000597724		001	033389 Republic Services #786	1000	General	30035	0068	County Commissioners	75.00	FEB 2022
0786-000597245		001	033389 Republic Services #786	1000	General	30035	0068	County Commissioners	311.76	FEB 2022
0786-000597244		001	033389 Republic Services #786	1000	General	30035	0068	County Commissioners	103.00	FEB 2022
0786-000597242		001	033389 Republic Services #786	1000	General	30035	0068	County Commissioners	57.00	FEB 2022
Uniform allowance 2022		001	220204 Richard Todd	1170	LIT Public Safety-Cnty Share	22030	0005	County Sheriff	1,345.00	Uniform
5063768557		001	033353 Ricoh Usa Inc	1119	Clerk's Records Perpetuation	24202	0001	Clerk of Circuit	41.68	COPIER FEES
5063768863		001	033353 Ricoh Usa Inc	2100	Supplemental Adult Prob Svcs	30016	0235	Probation	64.22	JAN22 USAGE

021522_022822 Docket.xlsx

Invoice	Bank	Check	Payee Name 1	Fund	Fund Desc	Acct	Loc	Loc Desc	Amount	Comment
2063768529		001 033390	Ricoh Usa Inc	1000	General	24201	0003	County Treasurer	15.46	B/W COPY JAN
5063768529		001 033390	Ricoh Usa Inc	1000	General	24201	0003	County Treasurer	1.40	COLOR COPY JAN
5063729077		001 033390	Ricoh Usa Inc	1197	Storm Water Reviews Engineer	30143	0006	County Surveyor	21.84	JAN22 COPIER LEA
5063710958		001 033390	Ricoh Usa Inc	1000	General	30800	0312	Building Dept (Permits)	20.77	122421-012322
105759963		001 033391	Ricoh Usa Inc	1000	General	20275	0312	Building Dept (Permits)	103.58	FEB 2022
36162944		001 033390	Ricoh Usa Inc	1119	Clerk's Records Perpetuation	24202	0001	Clerk of Circuit	117.47	MAR 2022
105883291		001 033414	Ricoh Usa Inc	1000	General	30083	0380	Jail	233.80	MAR 2022
36162411		001 033413	Ricoh Usa Inc	2100	Supplemental Adult Prob Svcs	30016	0235	Probation	168.53	MARCH 2022
5063729626		001	Ricoh Usa Inc	1000	General	30083	0380	Jail	141.04	EXCESS COPIES
5063729789		001	Ricoh Usa Inc	1000	General	30083	0380	Jail	164.09	EXCESS COPIES
		001 220129	Ripley Township Trustee	7330	LIT Local Income Tax	50000	0002	County Auditor	2,251.00	FEB 2022
Uniform allowance 2022		001 220205	Robert Hechinger	1170	LIT Public Safety-Cnty Share	22030	0005	County Sheriff	1,345.00	Uniform
205620		001	Robin Pirtle	8425	LEPC GRANT Hazd Sub & Resp	30091	9655	Emergency Response	260.00	LUNCH 20 PPL
618469		001	Robin Pirtle	8425	LEPC GRANT Hazd Sub & Resp	30091	9655	Emergency Response	280.00	LUNCH 20 PPL
Uniform allowance 2022		001 220206	Rodney Jenkins	1170	LIT Public Safety-Cnty Share	22030	0005	County Sheriff	1,345.00	Uniform
126655		001	Roeing Corporation	1000	General	30500	0380	Jail	330.00	PHONE REPAIR
Uniform allowance 2022		001 220207	Ryan Needham	1170	LIT Public Safety-Cnty Share	22030	0005	County Sheriff	1,345.00	Uniform
		001 220130	Scott Township Trustee	7330	LIT Local Income Tax	50000	0002	County Auditor	1,120.42	FEB 2022
Uniform allowance 2022		001 220208	Shelby Curtis	1170	LIT Public Safety-Cnty Share	22030	0005	County Sheriff	1,345.00	Uniform
33855		001	Stello Products	1176	Motor Vehicle Highway	23546	0529	County Highway	522.84	SIGNS
Uniform allowance 2022		001 220209	Stephanie Bruenger	1170	LIT Public Safety-Cnty Share	22030	0005	County Sheriff	1,345.00	Uniform
8000810068		001 033392	Stericycle, Inc.	4900	Central Comms Center	30050	0303	Communications Dept (Rad	98.22	1221-0112 SVC
336730/1		001	Stevenson's Ace Hardware	1000	General	24202	0380	Jail	11.98	RANGER KEYS
842733/1		001	Stevenson's Ace Hardware	1176	Motor Vehicle Highway	23523	0529	County Highway	89.99	SUPPLIES
336656/1		001	Stevenson's Ace Hardware	1176	Motor Vehicle Highway	23523	0529	County Highway	49.99	SUPPLIES
336679/1		001	Stevenson's Ace Hardware	1176	Motor Vehicle Highway	23523	0529	County Highway	49.98	SUPPLIES
336750/1		001	Stevenson's Ace Hardware	1000	General	24202	0380	Jail	16.99	CENTER PUNCH
		001 220131	Sugar Creek Township Trustee	7330	LIT Local Income Tax	50000	0002	County Auditor	1,172.58	FEB 2022
3026		001	Surb's Tire	1170	LIT Public Safety-Cnty Share	30100	0005	County Sheriff	11.50	TIRE LABOR
14074		001 220142	Taylor,Chadd,Minnnett, ET AL	1000	General	30230	0061	County Council	1,218.00	SVC THRU 1112022
022122		001 033354	TDS Telecom	4900	Central Comms Center	30148	0303	Communications Dept (Rad	359.20	JAN22 SVC
01242022		001 033357	The Fountain Trust	4900	Central Comms Center	47380	0303	Communications Dept (Rad	5,903.70	FINAL BOND PAY
E80184		001 033415	The Masters Touch	1000	General	30034	0068	County Commissioners	8,300.00	2022 SPR MAIL

021522_022822 Docket.xlsx

Invoice	Bank	Check	Payee Name 1	Fund	Fund Desc	Acct	Loc	Loc Desc	Amount	Comment
PL 4254	001		The Paper Of Montgomery County	1216	Auditors Ineligible Deductions	30800	0002	County Auditor	77.27	CCD NOT 1/31&2/7
PL 4248	001		The Paper Of Montgomery County	1216	Auditors Ineligible Deductions	30800	0002	County Auditor	39.36	CBF NOT 1/31&2/7
PL4236	001		The Paper Of Montgomery County	1000	General	30800	0312	Building Dept (Permits)	34.02	REZONE
PL4241	001		The Paper Of Montgomery County	1000	General	30800	0312	Building Dept (Permits)	33.04	ZV2203
PL4242	001		The Paper Of Montgomery County	1000	General	30800	0312	Building Dept (Permits)	31.10	ZV2201
PL4243	001		The Paper Of Montgomery County	1000	General	30800	0312	Building Dept (Permits)	31.10	ZV2202
PL4244	001		The Paper Of Montgomery County	1000	General	30800	0312	Building Dept (Permits)	35.96	ZONING AMEND
PL4267	001		The Paper Of Montgomery County	2600	Drain Construction/Reconst	65194	0006	County Surveyor	13.61	FINL NOT #583
845690506	001	033416	Thomson Reuters West	1000	General	20150	0009	Prosecuting Attorney	1,054.17	SUBSCRIPTION
945862822	001		Thomson Reuters West	1000	General	20150	0009	Prosecuting Attorney	1,054.17	SUBSCRIPTION
Uniform allowance 2022	001	220210	Timothy Newlin	1000	General	22030	0380	Jail	1,050.00	Uniform
02162022	001		Tippecanoe Co Drainage Board	2700	Drainage Maintenance	65091	0006	County Surveyor	35.15	#570 REB GRIMES
02162022	001		Tippecanoe Co Drainage Board	2700	Drainage Maintenance	65232	0006	County Surveyor	35,794.22	#97 JOHN MCLAUGH
02162022	001		Tippecanoe Co Drainage Board	2700	Drainage Maintenance	65140	0006	County Surveyor	1,516.87	#612 KIRK ONE
02162022	001		Tippecanoe Co Drainage Board	2700	Drainage Maintenance	65242	0006	County Surveyor	774.73	#642 LEAD/NEW
02162022	001		Tippecanoe Co Drainage Board	2700	Drainage Maintenance	65139	0006	County Surveyor	265.47	#611 SHAWNEE
02162022	001		Tippecanoe Co Drainage Board	2700	Drainage Maintenance	65087	0006	County Surveyor	974.80	#566 FRANK KIRK
02162022	001		Tippecanoe Co Drainage Board	2700	Drainage Maintenance	65090	0006	County Surveyor	135.02	#569 ELIJAH FUG
Uniform allowance 2022	001	220211	Todd Walsh	1170	LIT Public Safety-Cnty Share	22030	0005	County Sheriff	1,345.00	Uniform
133175	001		Town & Country Homecenter Inc	1000	General	30100	9655	Emergency Response	25.19	RATCHET STRAP
	001	220132	Town Of Linden	7330	LIT Local Income Tax	50000	0002	County Auditor	2,439.33	FEB 2022
	001	220112	Town Of Linden	7331	LIT Public Safety Fund	50000	0002	County Auditor	1,691.50	SUB SAF 02 2022
	001	220133	Town Of New Market	7330	LIT Local Income Tax	50000	0002	County Auditor	1,883.42	FEB 2022
	001	220113	Town Of New Market	7331	LIT Public Safety Fund	50000	0002	County Auditor	1,306.08	SUB SAF 02 2022
	001	220134	Town Of Waveland	7330	LIT Local Income Tax	50000	0002	County Auditor	1,073.67	FEB 2022
	001	220114	Town Of Waveland	7331	LIT Public Safety Fund	50000	0002	County Auditor	744.50	SUB SAF 02 2022
Uniform allowance 2022	001	220212	Travis King	1170	LIT Public Safety-Cnty Share	22030	0005	County Sheriff	1,345.00	Uniform
4602454	001		Treasurer Of State	1000	General	30083	0380	Jail	140.47	JAN 22 NETWORK
22ISDT-0391	001		Treasurer Of State	1170	LIT Public Safety-Cnty Share	33500	0005	County Sheriff	40.00	BTS-BROWN
18726	001		U Rent It Center	1176	Motor Vehicle Highway	23523	0529	County Highway	40.00	SUPPLIES
18736	001		U Rent It Center	1176	Motor Vehicle Highway	23523	0529	County Highway	31.85	SUPPLIES
	001	033337	Union Township Trustee	7330	LIT Local Income Tax	50000	0002	County Auditor	16,633.42	FEB 2022
2130201-07	001		United Consulting	1135	Cumulative Bridge	47101	0529	County Highway	119.00	BRIDGE INSPEC

021522_022822 Docket.xlsx

Invoice	Bank	Check	Payee Name 1	Fund	Fund Desc	Acct	Loc	Loc Desc	Amount	Comment
2130202-06		001	United Consulting	1135	Cumulative Bridge	47101	0306	Engineering	119.00	BRIDGE INSPEC
2130203-06		001	United Consulting	1135	Cumulative Bridge	47101	0306	Engineering	23,062.00	BRIDGE CONSTRUC
12200378		001	US Aggregates Inc	1173	MVH Restricted Fund	20015	0529	County Highway	3,238.00	PEA GRAVEL
465188134		001	033417 US Bank Equipment Finance	1000	General	30016	0011	Cnty Coop Extension Svcs	293.00	FEB2022
27585		001	033393 Utility Associates Inc	1101	Accident Report	44500	0005	County Sheriff	5,159.00	SUPPORT
27585		001	033393 Utility Associates Inc	1170	LIT Public Safety-Cnty Share	44500	0005	County Sheriff	5,159.00	SUPPORT
78154		001	033394 VA & F Financial Inc	1159	Health	30016	0610	Health Dept	107.41	JAN 2022 MPC3003
508866		001	033394 VA & F Financial Inc	1159	Health	30016	0610	Health Dept	120.18	JAN 2022 MPC3000
000089		001	Valley Oaks Health Inc	9131	JCAP 2020-01 Grant (Women's)	37003	0005	County Sheriff	544.50	JCAP SVC
000088		001	Valley Oaks Health Inc	1000	General	20450	0380	Jail	775.50	JCAP SVC
21595		001	220143 Van Ausdall & Farrar	1000	General	30128	0009	Prosecuting Attorney	1,310.21	SMARTSCH CONT
511483		001	220222 Van Ausdall & Farrar	1224	Reassessment	24201	0008	County Assessor	102.10	JAN 2022
510051		001	220222 Van Ausdall & Farrar	1159	Health	30800	0610	Health Dept	44.87	JAN 2022
510051		001	220222 Van Ausdall & Farrar	1159	Health	30800	0610	Health Dept	1.93	FREIGHT
511468		001	220222 Van Ausdall & Farrar	1000	General	30016	0201	Superior Court #1	51.06	021322-031222
511245		001	220222 Van Ausdall & Farrar	1176	Motor Vehicle Highway	24201	0529	County Highway	82.55	010122-013122
512348		001	220228 Van Ausdall & Farrar	1000	General	30128	0009	Prosecuting Attorney	848.89	022022-051922
502687		001	220228 Van Ausdall & Farrar	1000	General	30500	0660	4-D Program (Child Support)	162.72	OCT 2021
504650		001	220228 Van Ausdall & Farrar	1000	General	30500	0660	4-D Program (Child Support)	88.50	SHREDDER OIL
504014		001	220228 Van Ausdall & Farrar	1000	General	30500	0660	4-D Program (Child Support)	45.39	NOV 2021
75279972		001	033395 Van Ausdall & Farrar Inc	1000	General	30016	0009	Prosecuting Attorney	221.44	COPIER LEASE
74968475		001	033418 Van Ausdall & Farrar Inc	1000	General	30016	0009	Prosecuting Attorney	221.44	JAN 2022
Uniform allowance 2022		001	220213 Vanessa Bowling	1170	LIT Public Safety-Cnty Share	22030	0005	County Sheriff	1,050.00	Uniform
01282022		001	220098 Ventanex, Inc	4700	Self Insurance	00033	0068	County Commissioners	2,861.60	WE242022
02072022		001	220098 Ventanex, Inc	1000	General	12060	0068	County Commissioners	80.00	WE 02042022
		001	220216 Ventanex, Inc	1000	General	12060	0068	County Commissioners	732.42	W/E 2112022
		001	220216 Ventanex, Inc	4700	Self Insurance	00033	0068	County Commissioners	22,818.89	W/E 2112022
02182022		001	220223 Ventanex, Inc	1000	General	12060	0068	County Commissioners	3,905.42	W/E 021822
02182022		001	220223 Ventanex, Inc	4700	Self Insurance	00033	0068	County Commissioners	7,771.90	W/E 02182022
028102060X220102 DIRECT TV		002	Visa	1000	General	30083	0380	Jail	182.95	JAN 2022
111-0484003-4133851		002	Visa	1170	LIT Public Safety-Cnty Share	44500	0005	County Sheriff	31.02	LOCK BOX
5H75572		002	Visa	1170	LIT Public Safety-Cnty Share	44500	0005	County Sheriff	160.50	CHARGING CRADLES
1045412-202112-1		002	Visa	1000	General	30083	0380	Jail	321.70	DEC 2021

021522_022822 Docket.xlsx

Invoice	Bank	Check	Payee Name 1	Fund	Fund Desc	Acct	Loc	Loc Desc	Amount	Comment
13382278	002		Visa	1000	General	24202	0380	Jail	125.12	WASHER PARTS
5125050	002		Visa	1170	LIT Public Safety-Cnty Share	21961	0005	County Sheriff	119.49	GUN LIGHT
221106	002		Visa	1170	LIT Public Safety-Cnty Share	33500	0005	County Sheriff	150.00	TRAINING AT
01102022	002		Visa	1170	LIT Public Safety-Cnty Share	33500	0005	County Sheriff	650.00	CQB COURSE TW
CC6576014	002		Visa	1170	LIT Public Safety-Cnty Share	24201	0005	County Sheriff	166.90	RIBBON
12062021	002		Visa	1170	LIT Public Safety-Cnty Share	24202	0005	County Sheriff	15.00	TITLE FEE
13345670	002		Visa	1000	General	33500	0380	Jail	375.00	TASER COURSE
8431445	002		Visa	1170	LIT Public Safety-Cnty Share	20400	0005	County Sheriff	11.99	PHONE CHARGER
1295-8186	002		Visa	1170	LIT Public Safety-Cnty Share	33500	0005	County Sheriff	150.00	MCSO TRAINING
2879	002		Visa	1170	LIT Public Safety-Cnty Share	33500	0005	County Sheriff	275.00	SEMINAR JK
592	002		Visa	1000	General	24202	0380	Jail	401.92	4" TUBE
01092022	002		Visa	1170	LIT Public Safety-Cnty Share	32100	0005	County Sheriff	103.67	MISC FEES
ED55FB77-0001	002		Visa	1170	LIT Public Safety-Cnty Share	33500	0005	County Sheriff	2,160.00	MCSO TRAINING
251495	002		Visa	1000	General	24202	0380	Jail	1,483.25	CAMERA PKG
5H77307	002		Visa	1170	LIT Public Safety-Cnty Share	21961	0005	County Sheriff	192.92	FLASHLIGHT & CHG
660977	002		Visa	1000	General	24202	0380	Jail	13.23	SCREW HOOKS
302024605756477	002		Visa	1000	General	20003	0380	Jail	48.09	SUPPLIES
13382278	002		Visa	1000	General	24202	0380	Jail	182.90	WASHER LATCH
2T15MDRC1FV5	002		Visa	1170	LIT Public Safety-Cnty Share	20400	0005	County Sheriff	203.88	DROPPBOX
5748228	002		Visa	1170	LIT Public Safety-Cnty Share	20400	0005	County Sheriff	13.95	PLASTIC TUBE
1148872555	002		Visa	4975	1149 K-9 Gift Fd	24202	0005	County Sheriff	52.24	DOG FOOD
8434610	002		Visa	1000	General	24202	0380	Jail	128.39	LADDER
1026031	001	033327	Visa	1000	General	33500	0380	Jail	-165.00	Void Docket Chk
1026018	001	033327	Visa	1000	General	33500	0380	Jail	-165.00	Void Docket Chk
3WGTG	001	033327	Visa	1000	General	24202	0380	Jail	-361.83	Void Docket Chk
1045412-20111-1	001	033327	Visa	1000	General	30083	0380	Jail	-205.50	Void Docket Chk
114-0544450-1373068	001	033327	Visa	1000	General	24202	0380	Jail	-234.30	Void Docket Chk
028102060	001	033327	Visa	1000	General	30083	0380	Jail	-182.95	Void Docket Chk
1134425008	001	033327	Visa	4975	1149 K-9 Gift Fd	24202	0005	County Sheriff	-52.24	Void Docket Chk
3416-7836-FED	001	033327	Visa	1170	LIT Public Safety-Cnty Share	33500	0005	County Sheriff	-52.00	Void Docket Chk
19757981	001	033327	Visa	1170	LIT Public Safety-Cnty Share	21961	0005	County Sheriff	-37.39	Void Docket Chk
1915547827	001	033327	Visa	1170	LIT Public Safety-Cnty Share	44500	0005	County Sheriff	-235.29	Void Docket Chk
1915547828	001	033327	Visa	1170	LIT Public Safety-Cnty Share	44500	0005	County Sheriff	-363.00	Void Docket Chk

021522_022822 Docket.xlsx

Invoice	Bank	Check	Payee Name 1	Fund	Fund Desc	Acct	Loc	Loc Desc	Amount	Comment
4045		001 033327	Visa	1170	LIT Public Safety-Cnty Share	32100	0005	County Sheriff	-40.45	Void Docket Chk
20220820		001 033327	Visa	1170	LIT Public Safety-Cnty Share	33500	0005	County Sheriff	-454.00	Void Docket Chk
12312022		001 033327	Visa	1170	LIT Public Safety-Cnty Share	32100	0005	County Sheriff	-130.00	Void Docket Chk
63419848		001 033327	Visa	1170	LIT Public Safety-Cnty Share	33500	0005	County Sheriff	-250.00	Void Docket Chk
131659		001 033327	Visa	1170	LIT Public Safety-Cnty Share	21961	0005	County Sheriff	-289.00	Void Docket Chk
63419812		001 033327	Visa	4950	Sheriff Work Release	30160	0005	County Sheriff	-50.00	Void Docket Chk
1045412-202111-1 TLOXP		002	Visa	1000	General	30083	0380	Jail	205.50	110121-113021 TL
114-0544450-1373068		002	Visa	1000	General	24202	0380	Jail	234.30	TOWEL DISP
028102060X211202 DIRECT TV		002	Visa	1000	General	30083	0380	Jail	182.95	120121-123121
20220820		002	Visa	1170	LIT Public Safety-Cnty Share	33500	0005	County Sheriff	454.00	ARV TACTICS
604		002	Visa	1170	LIT Public Safety-Cnty Share	32100	0005	County Sheriff	130.00	MBOC RENEWAL
301995 GLOCK TRAINING		002	Visa	1170	LIT Public Safety-Cnty Share	33500	0005	County Sheriff	250.00	MCSO TRAINING
37143		002	Visa	1170	LIT Public Safety-Cnty Share	21961	0005	County Sheriff	289.00	TRUCK PARTS
20211213000463		002	Visa	1000	General	33500	0380	Jail	165.00	PURDUE EXT
1026018		002	Visa	1000	General	33500	0380	Jail	165.00	PURDUE EXT
1134425008		002	Visa	4975	1149 K-9 Gift Fd	24202	0005	County Sheriff	52.24	DOG FOOD
3416-7836-FED		002	Visa	1170	LIT Public Safety-Cnty Share	33500	0005	County Sheriff	52.00	INSTRUC RECERT
19757981		002	Visa	1170	LIT Public Safety-Cnty Share	21961	0005	County Sheriff	37.39	TAPE MEASURER
3WGTG		002	Visa	1000	General	24202	0380	Jail	361.83	THERMOMETER
1915547827		002	Visa	1170	LIT Public Safety-Cnty Share	44500	0005	County Sheriff	235.29	FLOOR MATS
1915547828		002	Visa	1170	LIT Public Safety-Cnty Share	44500	0005	County Sheriff	363.00	FLOOR UNIER
12212021		002	Visa	1170	LIT Public Safety-Cnty Share	32100	0005	County Sheriff	40.45	INTEREST/FEES
63419812522		002	Visa	4950	Sheriff Work Release	30160	0005	County Sheriff	50.00	2022 DUES
15651592		001 033419	Visa	1176	Motor Vehicle Highway	23523	0529	County Highway	53.94	D-RING ANCHORS
301339766742559		001 033328	Visa Travel	1000	General	21001	0380	Jail	-60.00	Void Docket Chk
26-161		001 033328	Visa Travel	1000	General	21001	0380	Jail	-32.31	Void Docket Chk
1285		001 033328	Visa Travel	1000	General	21001	0380	Jail	-30.42	Void Docket Chk
211207-02-296		001 033328	Visa Travel	1000	General	21001	0380	Jail	-28.92	Void Docket Chk
127939		001 033328	Visa Travel	1000	General	21001	0380	Jail	-27.61	Void Docket Chk
11153		001 033328	Visa Travel	1000	General	21001	0380	Jail	-39.82	Void Docket Chk
00041856		001 033328	Visa Travel	1000	General	21001	0380	Jail	-45.00	Void Docket Chk
10022213		001 033328	Visa Travel	1000	General	21001	0380	Jail	-60.00	Void Docket Chk
12092021		001 033328	Visa Travel	1000	General	21001	0380	Jail	-19.05	Void Docket Chk

021522_022822 Docket.xlsx

Invoice	Bank	Check	Payee Name 1	Fund	Fund Desc	Acct	Loc	Loc Desc	Amount	Comment
	001		Visa Travel	1000	General	21001	0380	Jail	-28.92	wrong bank
	002		Visa Travel	1000	General	21001	0380	Jail	28.92	Cafe Beignet
10022213	002		Visa Travel	1000	General	21001	0380	Jail	60.00	ALLIANCE CAB
26-1	002		Visa Travel	1000	General	21001	0380	Jail	32.31	LUNCH
12062021	002		Visa Travel	1000	General	21001	0380	Jail	30.42	SHAKE SHACK
211207-02-296	001		Visa Travel	1000	General	21001	0380	Jail	28.92	CAFE BEIGNET
8965	002		Visa Travel	1000	General	21001	0380	Jail	27.61	BURGER GAR
111-53	002		Visa Travel	1000	General	21001	0380	Jail	39.82	COTERIE
067647	002		Visa Travel	1000	General	21001	0380	Jail	45.00	INDY AIRPORT
0496A	002		Visa Travel	1000	General	21001	0380	Jail	60.00	ATLAS CAB
12092021	002		Visa Travel	1000	General	21001	0380	Jail	19.05	INTERST/FEES
2419	002		Visa Travel	1170	LIT Public Safety-Cnty Share	21001	0005	County Sheriff	32.06	PERKINS
2943	002		Visa Travel	1170	LIT Public Safety-Cnty Share	21001	0005	County Sheriff	39.74	MATTEOS
12062021	002		Visa Travel	1170	LIT Public Safety-Cnty Share	32100	0005	County Sheriff	20.19	FEES
29303	001		W Enterprises LLC	1000	General	30039	0011	Cnty Coop Extension Svcs	25.00	RECYCLE
01182022	001		Wabash Center	9104	Adult Guardianship (VASIA) J	30055	0202	Superior Court #2	38,500.00	MAGS
	001	220135	Walnut Township Trustee	7330	LIT Local Income Tax	50000	0002	County Auditor	1,217.42	FEB 2022
P2201269	001	033420	Washington National Insurance	5100	0300 Payroll Clearing	00028	0000	No Department	1,629.60	022022-031900
	001	220136	Waveland Public Library	7330	LIT Local Income Tax	50000	0002	County Auditor	2,404.33	FEB 2022
03132022	001		Waveland Re-upholsters	1000	General	30500	0380	Jail	125.00	WGHT BNCH REUP
	001	220137	Wayne Township Trustee	7330	LIT Local Income Tax	50000	0002	County Auditor	1,374.50	FEB 2022
	001	220138	Waynetown Clerk Treasurer	7330	LIT Local Income Tax	50000	0002	County Auditor	2,837.50	FEB 2022
	001	220115	Waynetown Clerk Treasurer	7331	Lit Public Safety Fund	50000	0002	County Auditor	1,967.67	SUB SAF 02 2022
	001	033396	West Central Regional Comm. Co	1000	General	30256	0201	Superior Court #1	160.00	DRUG CRT PART
B01763 CREDIT MEMO T90958 & T90960	001		West Side Tractor Sales	1176	Motor Vehicle Highway	23523	0529	County Highway	2,338.19	SUPPLIES
78075993	001	033355	Wex	1170	LIT Public Safety-Cnty Share	21000	0005	County Sheriff	124.18	JAN FUEL
Uniform allowance 2022	001	220214	William Boyer	1000	General	22030	0380	Jail	1,050.00	Uniform
Uniform allowance 2022	001	220215	William Boyer III	1000	General	22030	0380	Jail	1,050.00	Uniform
	001	220139	Wingate Clk Treasurer	7330	LIT Local Income Tax	50000	0002	County Auditor	1,834.67	FEB 2022
	001	220116	Wingate Clk Treasurer	7331	Lit Public Safety Fund	50000	0002	County Auditor	1,272.25	SUB SAF 02 2022
7075928	001		Winzer Corporation	1176	Motor Vehicle Highway	23523	0529	County Highway	79.90	CIRCUIT TESTER
27175	001	033358	WTH Technology Inc	1222	Statewide 911	44400	0303	Communications Dept (Rad	28,560.00	NG911 LAYER
27610	001	033397	WTH Technology Inc	1176	Motor Vehicle Highway	33128	0529	County Highway	2,274.00	ANNUAL SUPPORT

021522_022822 Docket.xlsx

Invoice	Bank	Check	Payee Name 1	Fund	Fund Desc	Acct	Loc	Loc Desc	Amount	Comment
27679	001		WTH Technology Inc	2100	Supplemental Adult Prob Svcs	30099	0235	Probation	72.00	GIS SUPPORT
276792	001		WTH Technology Inc	2100	Supplemental Adult Prob Svcs	30099	0235	Probation	13.50	AVL UNIT SUPP
262465	001		Zippy Lube	1170	LIT Public Safety-Cnty Share	30100	0005	County Sheriff	35.00	OIL CHANGE
262466	001		Zippy Lube	1170	LIT Public Safety-Cnty Share	30100	0005	County Sheriff	35.00	OIL CHANGE
262684	001		Zippy Lube	1170	LIT Public Safety-Cnty Share	30100	0005	County Sheriff	35.00	OIL CHANGE
262771	001		Zippy Lube	1170	LIT Public Safety-Cnty Share	30100	0005	County Sheriff	35.00	OIL CHANGE
262840	001		Zippy Lube	1170	LIT Public Safety-Cnty Share	30100	0005	County Sheriff	35.00	OIL CHANGE
TOTAL FOR PERIOD:									2,872,331.78	

Claim - Payroll

Wednesday, February 23, 2022 4:30 PM

02252022payroll

Employee Name	Pay Record	Current Pay Group	History Pay Group	Current Benefit Group	History Benefit Group	Amount	Budget Account Code	Current Pay Type	History Pay Type
Stadler, Mia R	Pay 01	Salary	Salary	Follow the Fund	Follow the Fund	1,250.00	8300.11064.000.0610	Salary	Salary
Northcutt, Greg A	Pay 01	Salary	Salary	Commissioners	Commissioners	96.15	1000.11021.000.0313	Salary	Salary
Northcutt, Greg A	Pay 01	Salary	Salary	Commissioners	Commissioners	1,709.60	1000.11983.000.0313	Salary	Salary
Clouser, Brooke E	Pay 01	Salary	Salary	CCC 1222	CCC 1222	2,008.00	1222.11730.000.0303	Salary	Salary
Osborn, Jessica T	Pay 01	Salary	Salary	Commissioners	Commissioners	1,552.54	1000.11026.000.0235	Salary	Salary
Kirby, Jared R	Pay 01	Salary	Salary	Commissioners	Commissioners	386.37	1170.11021.000.0005	Salary	Salary
Kirby, Jared R	Pay 01	Salary	Salary	Commissioners	Commissioners	2,211.54	1170.11935.000.0005	Salary	Salary
Berry, Caleb T	Pay 01	Salary	Salary	Commissioners	Commissioners	266.02	1170.11021.000.0005	Salary	Salary
Berry, Caleb T	Pay 01	Salary	Salary	Commissioners	Commissioners	1,986.54	1170.11222.000.0005	Salary	Salary
Hines, Sarah A	Pay 01	Salary	Salary	CCC 1222	CCC 1222	90.68	1222.11021.000.0303	Salary	Salary
Hines, Sarah A	Pay 01	Salary	Salary	CCC 1222	CCC 1222	2,341.42	1222.11303.000.0303	Salary	Salary
Andel, Jennifer J	Pay 01	Salary	Salary	Commissioners	Commissioners	2,518.27	1000.11100.000.0002	Salary	Salary
Wiles, Courtney D	Pay 01	Salary	Salary	Statewide 911	Statewide 911	122.32	4900.11021.000.0303	Salary	Salary
Wiles, Courtney D	Pay 01	Salary	Salary	Statewide 911	Statewide 911	1,630.69	4900.11830.000.0303	Salary	Salary
Douglas, Karyn D	Pay 01	Salary	Salary	Commissioners	Commissioners	1,933.81	1000.11100.000.0001	Salary	Salary
Garing, Dylan J	Pay 01	Salary	Salary	Commissioners	Commissioners	1,375.00	1000.11492.000.0380	Salary	Salary
Ratcliff, Nicole L	Pay 01	Salary	Salary	Commissioners	Commissioners	1,440.54	1000.11202.000.0002	Salary	Salary
McCarty, Matt P	Pay 01	Salary	Salary	Commissioners	Commissioners	3,241.96	1170.11205.000.0005	Salary	Salary
Laplaunt, Nichole E	Pay 01	Salary	Salary	Commissioners	Commissioners	2,152.50	4905.11125.000.0235	Salary	Salary
Watson, Jacob M	Pay 01	Salary	Salary	Commissioners	Commissioners	95.22	1170.11021.000.0005	Salary	Salary
Watson, Jacob M	Pay 01	Salary	Salary	Commissioners	Commissioners	2,589.23	1170.11305.000.0005	Salary	Salary
Riddle, Terry L	Pay 01	Salary	Salary	Highway	Highway	1,173.83	1176.11021.000.0529	Salary	Salary
Riddle, Terry L	Pay 01	Salary	Salary	Highway	Highway	1,626.12	1176.11752.000.0529	Salary	Salary
Garrard, Earlene L	Pay 01	Salary	Salary	Commissioners	Commissioners	1,865.42	1224.11503.000.0008	Salary	Salary
Teal, Anthony S	Pay 01	Salary	Salary	Commissioners	Commissioners	336.30	1170.11021.000.0005	Salary	Salary
Teal, Anthony S	Pay 01	Salary	Salary	Commissioners	Commissioners	2,510.77	1170.11936.000.0005	Salary	Salary
Riehle, Brian A	Pay 01	Salary	Salary	Commissioners	Commissioners	2,438.46	1170.11815.000.0005	Salary	Salary
Jones, Ashley N	Pay 01	Salary	Salary	Commissioners	Commissioners	1,299.42	1000.11460.000.0660	Salary	Salary
Melvin, Kathryn J	Pay 01	Salary	Salary	Statewide 911	Statewide 911	1,603.12	4900.11613.000.0303	Salary	Salary
Dulin, Kristopher M	Pay 01	Salary	Salary	Highway	Highway	157.54	1173.11090.000.0529	Salary	Salary
Dulin, Kristopher M	Pay 01	Salary	Salary	Highway	Highway	1,019.06	1176.11021.000.0529	Salary	Salary
Dulin, Kristopher M	Pay 01	Salary	Salary	Highway	Highway	1,417.84	1176.11452.000.0529	Salary	Salary
Donahue, Caleb A	Pay 01	Salary	Salary	Highway	Highway	285.54	1173.11090.000.0529	Salary	Salary
Donahue, Caleb A	Pay 01	Salary	Salary	Highway	Highway	1,289.84	1176.11007.000.0529	Salary	Salary
Donahue, Caleb A	Pay 01	Salary	Salary	Highway	Highway	1,048.60	1176.11021.000.0529	Salary	Salary
Walke, Traci C	Pay 01	Salary	Salary	Commissioners	Commissioners	1,440.54	1000.11902.000.0002	Salary	Salary
Felker, Lori A	Pay 01	Salary	Salary	Commissioners	Commissioners	247.28	1000.11021.000.0380	Salary	Salary
Felker, Lori A	Pay 01	Salary	Salary	Commissioners	Commissioners	1,807.69	1000.11498.000.0380	Salary	Salary

02252022payroll

Employee Name	Pay Record	Current Pay Group	History Pay Group	Current Benefit Group	History Benefit Group	Amount	Budget Account Code	Current Pay Type	History Pay Type
Klein, Thomas A	Pay 01	Salary	Salary	Commissioners	Commissioners	3,726.92	1000.11120.000.0068	Salary	Salary
Beuoy, Ryan M	Pay 01	Salary	Salary	Commissioners	Commissioners	2,464.96	4923.11821.000.0271	Salary	Salary
Pearson, Layton A	Pay 01	Salary	Salary	Commissioners	Commissioners	1,180.46	1000.11412.000.0660	Salary	Salary
Weimer, Inez J	Pay 01	Salary	Salary	Commissioners	Commissioners	109.72	1000.11021.000.0380	Salary	Salary
Weimer, Inez J	Pay 01	Salary	Salary	Commissioners	Commissioners	1,567.31	1000.11496.000.0380	Salary	Salary
Smith, Constance S	Pay 01	Salary	Salary	Commissioners	Commissioners	1,293.58	1000.11930.000.0380	Salary	Salary
Cutts, Eric A	Pay 01	Salary	Salary	Commissioners	Commissioners	505.84	4905.11023.000.0235	Salary	Salary
Cutts, Eric A	Pay 01	Salary	Salary	Commissioners	Commissioners	2,152.50	9177.11027.000.0235	Salary	Salary
McNulty, Alayna R	Pay 01	Salary	Salary	Statewide 911	Statewide 911	1,603.12	4900.11813.000.0303	Salary	Salary
Hechinger, Robert J	Pay 01	Salary	Salary	Commissioners	Commissioners	275.03	1170.11021.000.0005	Salary	Salary
Hechinger, Robert J	Pay 01	Salary	Salary	Commissioners	Commissioners	2,161.54	1170.11270.000.0005	Salary	Salary
Nichols, Brody B	Pay 01	Salary	Salary	Commissioners	Commissioners	1,519.23	1000.11339.000.0379	Salary	Salary
Fulwider, James D	Pay 01	Salary	Salary	Commissioners	Commissioners	823.08	1000.11268.000.0068	Salary	Salary
Redmon, Ethan M	Pay 01	Salary	Salary	Commissioners	Commissioners	210.15	1170.11021.000.0005	Salary	Salary
Redmon, Ethan M	Pay 01	Salary	Salary	Commissioners	Commissioners	2,161.54	1170.11355.000.0005	Salary	Salary
Swank, Nisha C	Pay 01	Salary	Salary	Commissioners	Commissioners	1,663.46	1000.11238.000.0380	Salary	Salary
Bailey, C T	Pay 01	Salary	Salary	Commissioners	Commissioners	1,567.31	1000.11039.000.0379	Salary	Salary
Sarver, Thomas D	Pay 01	Salary	Salary	Commissioners	Commissioners	2,775.92	1000.11160.000.0660	Salary	Salary
Fletcher, Nathaniel G	Pay 01	Salary	Salary	Commissioners	Commissioners	338.44	1000.11021.000.0380	Salary	Salary
Fletcher, Nathaniel G	Pay 01	Salary	Salary	Commissioners	Commissioners	1,403.85	1000.11298.000.0380	Salary	Salary
Johnson, Shannon M	Pay 01	Salary	Salary	Central Comms Center	Central Comms Center	1,103.76	4900.11313.000.0303	Salary	Salary
Lough, Jacob N	Pay 01	Salary	Salary	Highway	Highway	2,664.65	1176.11052.000.0529	Salary	Salary
Light, Cynthia S	Pay 01	Salary	Salary	Commissioners	Commissioners	1,552.92	1000.11360.000.0660	Salary	Salary
Northcutt, Adrienne R	Pay 01	Salary	Salary	HD	HD	1,617.00	1159.11061.000.0610	Salary	Salary
Gilliland, Patrick T	Pay 01	Salary	Salary	Commissioners	Commissioners	2,100.85	1000.11225.000.0235	Salary	Salary
Gilliland, Patrick T	Pay 01	Salary	Salary	Commissioners	Commissioners	210.10	2100.11021.000.0235	Salary	Salary
Waling, Ashlee N	Pay 01	Salary	Salary	Commissioners	Commissioners	215.25	2100.11021.000.0235	Salary	Salary
Waling, Ashlee N	Pay 01	Salary	Salary	Commissioners	Commissioners	2,152.50	2100.11025.000.0235	Salary	Salary
Traugher, Kathy A	Pay 01	Salary	Salary	Commissioners	Commissioners	1,670.58	1189.11300.000.0004	Salary	Salary
Boyer III, William H	Pay 01	Salary	Salary	Commissioners	Commissioners	193.20	1000.11021.000.0380	Salary	Salary
Boyer III, William H	Pay 01	Salary	Salary	Commissioners	Commissioners	1,403.85	1000.11489.000.0380	Salary	Salary
Allen, Michael J	Pay 01	Salary	Salary	Highway	Highway	227.29	1173.11090.000.0529	Salary	Salary
Allen, Michael J	Pay 01	Salary	Salary	Highway	Highway	1,704.64	1176.11021.000.0529	Salary	Salary
Allen, Michael J	Pay 01	Salary	Salary	Highway	Highway	2,045.59	1176.11085.000.0529	Salary	Salary
King, Travis M	Pay 01	Salary	Salary	Commissioners	Commissioners	2,877.88	1170.11274.000.0005	Salary	Salary
Bowling, Michelle V	Pay 01	Salary	Salary	Commissioners	Commissioners	1,386.04	1170.11405.000.0005	Salary	Salary
Heggemeier, Loren W	Pay 01	Salary	Salary	Highway	Highway	330.45	1173.11090.000.0529	Salary	Salary
Heggemeier, Loren W	Pay 01	Salary	Salary	Highway	Highway	681.56	1176.11021.000.0529	Salary	Salary

02252022payroll

Employee Name	Pay Record	Current Pay Group	History Pay Group	Current Benefit Group	History Benefit Group	Amount	Budget Account Code	Current Pay Type	History Pay Type
Heggemeier, Loren W	Pay 01	Salary	Salary	Highway	Highway	1,321.82	1176.11073.000.0529	Salary	Salary
Feltner, Barbara M	Pay 01	Salary	Salary	Commissioners	Commissioners	1,517.54	1000.11409.000.0235	Salary	Salary
Callahan, Timothy L	Pay 01	Salary	Salary	Statewide 911	Statewide 911	1,340.28	4900.11713.000.0303	Salary	Salary
Lesko, Kara D	Pay 01	Salary	Salary	Commissioners	Commissioners	1,228.46	1000.11400.000.0201	Salary	Salary
Sandusky, Kimberly H	Pay 01	Salary	Salary	Commissioners	Commissioners	1,743.12	1000.11401.000.0001	Salary	Salary
Clouser, Cade M	Pay 01	Salary	Salary	Statewide 911	Statewide 911	1,537.50	4900.11513.000.0303	Salary	Salary
Curtis, Shelby J	Pay 01	Salary	Salary	Commissioners	Commissioners	272.78	1170.11021.000.0005	Salary	Salary
Curtis, Shelby J	Pay 01	Salary	Salary	Commissioners	Commissioners	2,036.54	1170.11383.000.0005	Salary	Salary
Hedrick, Nicholas R	Pay 01	Salary	Salary	Commissioners	Commissioners	1,157.31	1000.11209.000.0271	Salary	Salary
Oldham, Racheal A	Pay 01	Salary	Salary	Commissioners	Commissioners	2,648.85	9106.11028.000.0235	Salary	Salary
Southard, Rachel A	Pay 01	Salary	Salary	Commissioners	Commissioners	1,295.15	1000.11211.000.0001	Salary	Salary
Hunt, David T	Pay 01	Salary	Salary	Commissioners	Commissioners	192.31	1000.11261.000.0061	Salary	Salary
Cope, Vicki R	Pay 01	Salary	Salary	Statewide 911	Statewide 911	129.40	4900.11021.000.0303	Salary	Salary
Cope, Vicki R	Pay 01	Salary	Salary	Statewide 911	Statewide 911	1,667.73	4900.11307.000.0303	Salary	Salary
McAnulty, Linda M	Pay 01	Salary	Salary	Commissioners	Commissioners	1,318.35	1000.11321.000.0201	Salary	Salary
Brady, Scott W	Pay 01	Salary	Salary	Highway	Highway	424.84	1173.11090.000.0529	Salary	Salary
Brady, Scott W	Pay 01	Salary	Salary	Highway	Highway	1,699.35	1176.11257.000.0529	Salary	Salary
Thomen, Austin D	Pay 01	Salary	Salary	Commissioners	Commissioners	299.78	1170.11021.000.0005	Salary	Salary
Thomen, Austin D	Pay 01	Salary	Salary	Commissioners	Commissioners	2,161.54	1170.11235.000.0005	Salary	Salary
Geigle, Andria L	Pay 01	Salary	Salary	Commissioners	Commissioners	3,378.27	1000.11228.000.0235	Salary	Salary
Walters, Brookanna L	Pay 01	Salary	Salary	HD	HD	3,719.23	1159.11459.000.0610	Salary	Salary
Phillips, Samantha K	Pay 01	Salary	Salary	Commissioners	Commissioners	1,204.38	1000.11400.000.0202	Salary	Salary
Proctor, Kyle A	Pay 01	Salary	Salary	Commissioners	Commissioners	1,259.54	1170.11945.000.0005	Salary	Salary
Lowe, Nema G	Pay 01	Salary	Salary	Commissioners	Commissioners	1,750.00	1000.11370.000.0380	Salary	Salary
Black, Rachel R	Pay 01	Salary	Salary	Commissioners	Commissioners	1,267.15	1000.11321.000.0202	Salary	Salary
Buttery, Hannah R	Pay 01	Part Time	Part Time	HD	HD	594.00	1159.11133.000.0610	Hourly	Hourly
Thomas, Rebekah L	Pay 01	Salary	Salary	Commissioners	Commissioners	1,220.46	1000.11204.000.0001	Salary	Salary
Rowe, Zoey J	Pay 01	Part Time	Part Time	Commissioners	Commissioners	200.08	1000.11507.000.0007	Salary	Salary
Blanton, Ronald L	Pay 01	Salary	Salary	Highway	Highway	1,672.68	1176.11021.000.0529	Salary	Salary
Blanton, Ronald L	Pay 01	Salary	Salary	Highway	Highway	2,272.88	1176.11859.000.0529	Salary	Salary
Frey, John E	Pay 01	Salary	Salary	Commissioners	Commissioners	823.08	1000.11368.000.0068	Salary	Salary
Thomas, Cole R	Pay 01	Salary	Salary	Commissioners	Commissioners	1,258.60	1000.11380.000.0380	Salary	Salary
Steelsmith, Seth A	Pay 01	Salary	Salary	Highway	Highway	306.51	1173.11090.000.0529	Salary	Salary
Steelsmith, Seth A	Pay 01	Salary	Salary	Highway	Highway	1,388.85	1176.11021.000.0529	Salary	Salary
Steelsmith, Seth A	Pay 01	Salary	Salary	Highway	Highway	1,736.87	1176.11072.000.0529	Salary	Salary
Kinnett, Richard L	Pay 01	Salary	Salary	Commissioners	Commissioners	1,497.19	1000.11109.000.0009	Salary	Salary
Bentley, Sherri L	Pay 01	Salary	Salary	Commissioners	Commissioners	2,165.54	1000.11100.000.0008	Salary	Salary
Hughes, Jeremy A	Pay 01	Salary	Salary	Commissioners	Commissioners	102.78	1170.11021.000.0005	Salary	Salary

02252022payroll

Employee Name	Pay Record	Current Pay Group	History Pay Group	Current Benefit Group	History Benefit Group	Amount	Budget Account Code	Current Pay Type	History Pay Type
Hughes, Jeremy A	Pay 01	Salary	Salary	Commissioners	Commissioners	2,877.88	1170.11505.000.0005	Salary	Salary
Jones, Stephen W	Pay 01	Salary	Salary	Highway	Highway	384.42	1173.11090.000.0529	Salary	Salary
Jones, Stephen W	Pay 01	Salary	Salary	Highway	Highway	1,063.15	1176.11021.000.0529	Salary	Salary
Jones, Stephen W	Pay 01	Salary	Salary	Highway	Highway	1,537.66	1176.11642.000.0529	Salary	Salary
Wilson, Loudella E	Pay 01	Salary	Salary	Commissioners	Commissioners	1,757.85	1000.11418.000.0380	Salary	Salary
Hampton, Dave W	Pay 01	Salary	Salary	Commissioners	Commissioners	1,332.23	1000.11132.000.0312	Salary	Salary
Emmert, Vicki A	Pay 01	Part Time	Part Time	Commissioners	Commissioners	267.98	1000.11168.000.0006	Hourly	Hourly
Conkright, John W	Pay 01	Salary	Salary	Highway	Highway	2,272.88	1176.11279.000.0529	Salary	Salary
Ledbetter, Sherri A	Pay 01	Salary	Salary	Commissioners	Commissioners	1,680.92	1000.11260.000.0660	Salary	Salary
Mitchell, Braden D	Pay 01	Salary	Salary	Commissioners	Commissioners	269.48	1170.11021.000.0005	Salary	Salary
Mitchell, Braden W	Pay 01	Salary	Salary	Commissioners	Commissioners	2,011.54	1170.11301.000.0005	Salary	Salary
Kinnett, Patricia R	Pay 01	Part Time	Part Time	Commissioners	Commissioners	528.00	1000.11201.000.0001	Hourly	Hourly
Parker, Conner D	Pay 01	Salary	Salary	Commissioners	Commissioners	180.30	1000.11021.000.0380	Salary	Salary
Parker, Conner D	Pay 01	Salary	Salary	Commissioners	Commissioners	1,346.15	1000.11491.000.0380	Salary	Salary
Forman, Darren D	Pay 01	Salary	Salary	Commissioners	Commissioners	764.38	1000.11100.000.0007	Salary	Salary
Ranard, Brennan D	Pay 01	Salary	Salary	Highway	Highway	298.56	1173.11090.000.0529	Salary	Salary
Ranard, Brennan D	Pay 01	Salary	Salary	Highway	Highway	1,407.52	1176.11077.000.0529	Salary	Salary
Hedge, Jeffery A	Pay 01	Salary	Salary	Highway	Highway	494.33	1173.11090.000.0529	Salary	Salary
Hedge, Jeffery A	Pay 01	Salary	Salary	Highway	Highway	1,153.43	1176.11021.000.0529	Salary	Salary
Hedge, Jeffery A	Pay 01	Salary	Salary	Highway	Highway	1,702.71	1176.11402.000.0529	Salary	Salary
Mills, Don G	Pay 01	Salary	Salary	Commissioners	Commissioners	192.31	1000.11261.000.0061	Salary	Salary
Byers, Stacey L	Pay 01	Salary	Salary	Commissioners	Commissioners	1,383.15	1000.11209.000.0009	Salary	Salary
Cummins, Thomas E	Pay 01	Salary	Salary	Commissioners	Commissioners	2,125.31	1000.11006.000.0006	Salary	Salary
Froedge, Jill A	Pay 01	Salary	Salary	Commissioners	Commissioners	1,774.31	1000.11321.000.0232	Salary	Salary
Gable, Faith T	Pay 01	Salary	Salary	Commissioners	Commissioners	2,122.31	1000.11523.000.0235	Salary	Salary
Church, Erica E	Pay 01	Salary	Salary	Commissioners	Commissioners	1,137.69	1000.11502.000.0202	Salary	Salary
Walters, Jeffery L	Pay 01	Part Time	Part Time	Commissioners	Commissioners	603.50	4950.11055.000.0005	Hourly	Hourly
Lough, Cody A	Pay 01	Salary	Salary	Highway	Highway	162.61	1173.11090.000.0529	Salary	Salary
Lough, Cody A	Pay 01	Salary	Salary	Highway	Highway	289.65	1176.11021.000.0529	Salary	Salary
Lough, Cody A	Pay 01	Salary	Salary	Highway	Highway	1,463.51	1176.11080.000.0529	Salary	Salary
Warren, Cheyenne M	Pay 01	Salary	Salary	Commissioners	Commissioners	1,617.31	1000.11497.000.0380	Salary	Salary
Joyce, Karla S	Pay 01	Salary	Salary	Statewide 911	Statewide 911	1,576.93	4900.11414.000.0303	Salary	Salary
Campbell, Brian K	Pay 01	Salary	Salary	Commissioners	Commissioners	1,668.92	1000.11230.000.9655	Salary	Salary
Harshbarger, Jennifer S	Pay 01	Salary	Salary	Commissioners	Commissioners	1,306.12	1000.11721.000.0271	Salary	Salary
Boller, Cameron L	Pay 01	Salary	Salary	Commissioners	Commissioners	225.63	1000.11021.000.0380	Salary	Salary
Boller, Cameron L	Pay 01	Salary	Salary	Commissioners	Commissioners	1,403.85	1000.11580.000.0380	Salary	Salary
Swick, Cody J	Pay 01	Salary	Salary	Commissioners	Commissioners	226.64	1000.11021.000.0380	Salary	Salary
Swick, Cody J	Pay 01	Salary	Salary	Commissioners	Commissioners	1,302.39	1000.11382.000.0380	Salary	Salary

02252022payroll

Employee Name	Pay Record	Current Pay Group	History Pay Group	Current Benefit Group	History Benefit Group	Amount	Budget Account Code	Current Pay Type	History Pay Type
Dodds, Regina M	Pay 01	Salary	Salary	Commissioners	Commissioners	515.55	1000.11021.000.0380	Salary	Salary
Dodds, Regina M	Pay 01	Salary	Salary	Commissioners	Commissioners	1,375.00	1000.11486.000.0380	Salary	Salary
Laffoon, Heather R	Pay 01	Salary	Salary	Commissioners	Commissioners	1,838.35	1000.11100.000.0003	Salary	Salary
Barth, Katie M	Pay 01	Salary	Salary	Follow the Fund	Follow the Fund	1,326.92	8300.11065.000.0610	Salary	Salary
McCoy, Bradley J	Pay 01	Salary	Salary	Highway	Highway	101.63	1173.11090.000.0529	Salary	Salary
McCoy, Bradley J	Pay 01	Salary	Salary	Highway	Highway	503.07	1176.11021.000.0529	Salary	Salary
McCoy, Bradley J	Pay 01	Salary	Salary	Highway	Highway	1,524.49	1176.11319.000.0529	Salary	Salary
Pike, Drake A	Pay 01	Salary	Salary	Commissioners	Commissioners	1,432.69	1000.11328.000.0380	Salary	Salary
Kirk, Gabriel J	Pay 01	Salary	Salary	Commissioners	Commissioners	1,552.54	2100.11525.000.0235	Salary	Salary
Stonebraker, Casey T	Pay 01	Salary	Salary	Commissioners	Commissioners	1,490.38	1000.11703.000.0380	Salary	Salary
Sweeney, Megan R	Pay 01	Salary	Salary	Commissioners	Commissioners	1,220.08	1000.11209.000.0750	Salary	Salary
Yohler, Courtne E	Pay 01	Salary	Salary	Commissioners	Commissioners	1,137.69	1000.11502.000.0201	Salary	Salary
Fullenwider, Benjamin D	Pay 01	Salary	Salary	Commissioners	Commissioners	66.40	1170.11021.000.0005	Salary	Salary
Fullenwider, Benjamin D	Pay 01	Salary	Salary	Commissioners	Commissioners	2,286.54	1170.11905.000.0005	Salary	Salary
Smith, Mark	Pay 01	Salary	Salary	Commissioners	Commissioners	192.31	1000.11261.000.0061	Salary	Salary
Burget, Jessica L	Pay 01	Salary	Salary	Commissioners	Commissioners	1,157.31	1000.11809.000.9655	Salary	Salary
Adams, Michael S	Pay 01	Salary	Salary	Highway	Highway	157.54	1173.11090.000.0529	Salary	Salary
Adams, Michael S	Pay 01	Salary	Salary	Highway	Highway	723.68	1176.11021.000.0529	Salary	Salary
Adams, Michael S	Pay 01	Salary	Salary	Highway	Highway	1,417.84	1176.11429.000.0529	Salary	Salary
Beavers, Edward J	Pay 01	Salary	Salary	Highway	Highway	484.00	1176.11021.000.0529	Salary	Salary
Beavers, Edward J	Pay 01	Salary	Salary	Highway	Highway	1,912.15	1176.11375.000.0529	Salary	Salary
Caldwell, Melissa A	Pay 01	Salary	Salary	Commissioners	Commissioners	1,754.12	1000.11209.000.0312	Salary	Salary
Weller, Mary J	Pay 01	Part Time	Part Time	Follow the Fund	Follow the Fund	442.50	1189.11168.000.0004	Hourly	Hourly
Peck, James M	Pay 01	Salary	Salary	Highway	Highway	3,918.31	1176.11010.000.0306	Salary	Salary
Lowery, Breana L	Pay 01	Salary	Salary	Commissioners	Commissioners	556.58	1000.11487.000.0380	Salary	Salary
Koury, Mycah A	Pay 01	Salary	Salary	CCC 1222	CCC 1222	1,769.23	1222.11307.000.0303	Salary	Salary
Moore, Jacob A	Pay 01	Salary	Salary	Commissioners	Commissioners	2,564.54	1000.11160.000.0009	Salary	Salary
Northcutt, Isaac M	Pay 01	Salary	Salary	Highway	Highway	160.05	1173.11090.000.0529	Salary	Salary
Northcutt, Isaac M	Pay 01	Salary	Salary	Highway	Highway	825.25	1176.11021.000.0529	Salary	Salary
Northcutt, Isaac M	Pay 01	Salary	Salary	Highway	Highway	1,440.45	1176.11070.000.0529	Salary	Salary
Henry, Sherri K	Pay 01	Salary	Salary	CCC 1222	CCC 1222	2,576.92	1222.11102.000.0303	Salary	Salary
Payne, Brenda S	Pay 01	Salary	Salary	Commissioners	Commissioners	2,348.58	1000.11244.000.0235	Salary	Salary
Dale, Connie K	Pay 01	Salary	Salary	Commissioners	Commissioners	2,225.85	1170.11705.000.0005	Salary	Salary
Sweet, Mark A	Pay 01	Salary	Salary	Highway	Highway	330.45	1173.11090.000.0529	Salary	Salary
Sweet, Mark A	Pay 01	Salary	Salary	Highway	Highway	1,321.78	1176.11012.000.0529	Salary	Salary
Sweet, Mark A	Pay 01	Salary	Salary	Highway	Highway	650.56	1176.11021.000.0529	Salary	Salary
Parker, Samantha R	Pay 01	Salary	Salary	Commissioners	Commissioners	1,157.31	1000.11809.000.0009	Salary	Salary
Parker, Nicole L	Pay 01	Salary	Salary	CCC 1222	CCC 1222	2,481.15	1222.11233.000.0303	Salary	Salary

02252022payroll

Employee Name	Pay Record	Current Pay Group	History Pay Group	Current Benefit Group	History Benefit Group	Amount	Budget Account Code	Current Pay Type	History Pay Type
Hodges, Amie J	Pay 01	Salary	Salary	Commissioners	Commissioners	1,683.69	1000.11400.000.0232	Salary	Salary
Olin, Matthew J	Pay 01	Salary	Salary	Highway	Highway	222.28	1173.11090.000.0529	Salary	Salary
Olin, Matthew J	Pay 01	Salary	Salary	Highway	Highway	1,750.39	1176.11021.000.0529	Salary	Salary
Olin, Matthew J	Pay 01	Salary	Salary	Highway	Highway	2,000.45	1176.11506.000.0529	Salary	Salary
Clark, Brady M	Pay 01	Salary	Salary	Commissioners	Commissioners	1,375.00	1000.11494.000.0380	Salary	Salary
Miller, Gregory H	Pay 01	Salary	Salary	Commissioners	Commissioners	2,615.81	1000.11290.000.0009	Salary	Salary
Guard, Forest D	Pay 01	Salary	Salary	Commissioners	Commissioners	823.08	1000.11068.000.0068	Salary	Salary
Swazay, Angela D	Pay 01	Salary	Salary	Commissioners	Commissioners	1,813.54	1000.11119.000.0660	Salary	Salary
Todd, Richard R	Pay 01	Salary	Salary	Commissioners	Commissioners	227.60	1170.11021.000.0005	Salary	Salary
Todd, Richard R	Pay 01	Salary	Salary	Commissioners	Commissioners	2,510.77	1170.11215.000.0005	Salary	Salary
Boyer IV, William H	Pay 01	Salary	Salary	Commissioners	Commissioners	183.89	1000.11021.000.0380	Salary	Salary
Boyer IV, William H	Pay 01	Salary	Salary	Commissioners	Commissioners	1,432.69	1000.11490.000.0380	Salary	Salary
Ramos, Sandra A	Pay 01	Salary	Salary	Highway	Highway	1,572.73	1176.11259.000.0529	Salary	Salary
Reed, Amber D	Pay 01	Salary	Salary	HD	HD	2,115.38	1159.11516.000.0610	Salary	Salary
Yerkes-Mason, Deborah L	Pay 01	Salary	Salary	Commissioners	Commissioners	1,264.08	1224.11208.000.0008	Salary	Salary
Newlin, Timothy D	Pay 01	Salary	Salary	Commissioners	Commissioners	24.55	1000.11021.000.0380	Salary	Salary
Newlin, Timothy D	Pay 01	Salary	Salary	Commissioners	Commissioners	1,375.00	1000.11302.000.0380	Salary	Salary
Portwood, Cheryl F	Pay 01	Salary	Salary	Commissioners	Commissioners	1,196.54	1000.11503.000.0003	Salary	Salary
Lough, Kristin N	Pay 01	Salary	Salary	Commissioners	Commissioners	1,384.62	1000.11702.000.0002	Salary	Salary
Griffith, Jennifer A	Pay 01	Salary	Salary	Commissioners	Commissioners	2,211.54	1170.11275.000.0005	Salary	Salary
Bohlender, Jacob R	Pay 01	Salary	Salary	Commissioners	Commissioners	192.31	1000.11261.000.0061	Salary	Salary
Denbo, Leah L	Pay 01	Salary	Salary	Commissioners	Commissioners	1,779.23	1000.11300.000.0001	Salary	Salary
Orr, Donald S	Pay 01	Salary	Salary	HD	HD	1,523.77	1159.11216.000.0610	Salary	Salary
Melvin, Brent D	Pay 01	Salary	Salary	Highway	Highway	330.45	1173.11090.000.0529	Salary	Salary
Melvin, Brent D	Pay 01	Salary	Salary	Highway	Highway	1,321.78	1176.11008.000.0529	Salary	Salary
Melvin, Brent D	Pay 01	Salary	Salary	Highway	Highway	820.94	1176.11021.000.0529	Salary	Salary
Rice, Anthony J	Pay 01	Salary	Salary	Commissioners	Commissioners	2,386.54	1170.11850.000.0005	Salary	Salary
Victory-Kosinski, Kaytlynn R	Pay 01	Salary	Salary	Statewide 911	Statewide 911	1,686.58	4900.11212.000.0303	Salary	Salary
York, Jennifer B	Pay 01	Salary	Salary	Commissioners	Commissioners	112.06	1000.11029.000.0201	Salary	Salary
York, Jennifer B	Pay 01	Salary	Salary	Commissioners	Commissioners	2,801.35	9144.11522.000.0235	Salary	Salary
Dossett, Laura R	Pay 01	Salary	Salary	Commissioners	Commissioners	1,813.54	1000.11258.000.0068	Salary	Salary
Bushong, Cynthia D	Pay 01	Part Time	Part Time	Commissioners	Commissioners	382.19	1000.11200.000.0007	Salary	Salary
Bushong, Cynthia D	Pay 02	Salary	Salary	HD	HD	1,234.62	1168.11220.000.0610	Salary	Salary
Martin, Donald D	Pay 01	Salary	Salary	Highway	Highway	351.68	1173.11090.000.0529	Salary	Salary
Martin, Donald D	Pay 01	Salary	Salary	Highway	Highway	1,657.90	1176.11075.000.0529	Salary	Salary
Stonebraker, Ashley M	Pay 01	Salary	Salary	Commissioners	Commissioners	1,244.88	1000.11600.000.0001	Salary	Salary
Roberts, John R	Pay 01	Salary	Salary	HD	HD	750.00	8109.11105.000.0610	Salary	Salary

02252022payroll

Employee Name	Pay Record	Current Pay Group	History Pay Group	Current Benefit Group	History Benefit Group	Amount	Budget Account Code	Current Pay Type	History Pay Type
Ellis, Joseph M	Pay 01	Salary	Salary	Commissioners	Commissioners	689.50	1000.11112.000.0012	Salary	Salary
Michael, Dakota T	Pay 01	Salary	Salary	Highway	Highway	2,091.00	1176.11018.000.0529	Salary	Salary
Michael, Dakota T	Pay 01	Salary	Salary	Highway	Highway	1,587.84	1176.11021.000.0529	Salary	Salary
Little, Lauren R	Pay 01	Salary	Salary	Commissioners	Commissioners	196.40	1000.11021.000.0380	Salary	Salary
Little, Lauren R	Pay 01	Salary	Salary	Commissioners	Commissioners	1,375.00	1000.11495.000.0380	Salary	Salary
Meadows, Mary J	Pay 01	Salary	Salary	Commissioners	Commissioners	1,757.85	1224.11308.000.0008	Salary	Salary
Cevela, Jamie L	Pay 01	Salary	Salary	Follow the Fund	Follow the Fund	1,375.00	9131.11241.000.0005	Salary	Salary
Custer, Lena K	Pay 01	Salary	Salary	Commissioners	Commissioners	1,768.77	1000.11300.000.0001	Salary	Salary
Roe, Becky S	Pay 01	Salary	Salary	Commissioners	Commissioners	1,040.81	1000.11393.000.0380	Salary	Salary
Herron, Amber L	Pay 01	Salary	Salary	Highway	Highway	2,185.42	1176.11159.000.0529	Salary	Salary
Kirby, Elizabeth L	Pay 01	Salary	Salary	CCC 1222	CCC 1222	80.52	1222.11021.000.0303	Salary	Salary
Kirby, Elizabeth L	Pay 01	Salary	Salary	CCC 1222	CCC 1222	2,089.69	1222.11404.000.0303	Salary	Salary
Crull, Kevin M	Pay 01	Salary	Salary	Commissioners	Commissioners	664.24	1170.11021.000.0005	Salary	Salary
Crull, Kevin M	Pay 01	Salary	Salary	Commissioners	Commissioners	2,488.46	1170.11934.000.0005	Salary	Salary
Donaldson, Steven B	Pay 01	Salary	Salary	Commissioners	Commissioners	4,613.96	1000.11421.000.0271	Salary	Salary
Morales Gutierrez, Sinahi U	Pay 01	Salary	Salary	Statewide 911	Statewide 911	122.32	4900.11021.000.0303	Salary	Salary
Morales Gutierrez, Sinahi U	Pay 01	Salary	Salary	Statewide 911	Statewide 911	1,630.69	4900.11413.000.0303	Salary	Salary
Phillips, Monica D	Pay 01	Salary	Salary	Commissioners	Commissioners	1,403.85	1000.11439.000.0379	Salary	Salary
Villalpando, Lindsey A	Pay 01	Salary	Salary	Commissioners	Commissioners	2,390.85	1000.11273.000.0235	Salary	Salary
Kadinger, Matthew D	Pay 01	Salary	Salary	Commissioners	Commissioners	270.05	1000.11021.000.0380	Salary	Salary
Kadinger, Matthew D	Pay 01	Salary	Salary	Commissioners	Commissioners	1,375.00	1000.11293.000.0380	Salary	Salary
Punke, Deric L	Pay 01	Salary	Salary	Commissioners	Commissioners	1,986.54	1170.11024.000.0005	Salary	Salary
Miller, Ethan A	Pay 01	Salary	Salary	Commissioners	Commissioners	1,375.00	1000.11280.000.0380	Salary	Salary
Kiger, Layton T	Pay 01	Salary	Salary	Commissioners	Commissioners	1,375.00	1000.11488.000.0380	Salary	Salary
Lowe, Albert L	Pay 01	Salary	Salary	Highway	Highway	170.46	1176.11021.000.0529	Salary	Salary
Lowe, Albert L	Pay 01	Salary	Salary	Highway	Highway	2,272.88	1176.11641.000.0529	Salary	Salary
Barth, Daniel S	Pay 01	Salary	Salary	Commissioners	Commissioners	28.65	1000.11021.000.0379	Salary	Salary
Barth, Daniel S	Pay 01	Salary	Salary	Commissioners	Commissioners	1,432.69	1000.11239.000.0379	Salary	Salary
Cochran, Hannah R	Pay 01	Salary	Salary	Commissioners	Commissioners	2,250.54	9178.11213.000.0235	Salary	Salary
Bickel, Mark M	Pay 01	Salary	Salary	Commissioners	Commissioners	3,185.96	1000.11229.000.0235	Salary	Salary
Cox, Nancy L	Pay 01	Salary	Salary	Commissioners	Commissioners	1,562.62	1000.11300.000.0003	Salary	Salary
Eads, Hunter C	Pay 01	Salary	Salary	Commissioners	Commissioners	184.12	1000.11021.000.0380	Salary	Salary
Eads, Hunter C	Pay 01	Salary	Salary	Commissioners	Commissioners	1,375.00	1000.11501.000.0380	Salary	Salary
Davis, Michael D	Pay 01	Salary	Salary	Commissioners	Commissioners	1,961.54	1000.11105.000.0753	Salary	Salary
Minor, Jeremy K	Pay 01	Salary	Salary	Commissioners	Commissioners	2,211.54	1170.11507.000.0005	Salary	Salary
Mellish, Thomas J	Pay 01	Salary	Salary	Commissioners	Commissioners	192.31	1000.11261.000.0061	Salary	Salary
Rivera, Sara E	Pay 01	Salary	Salary	HD	HD	1,576.92	1159.11309.000.0610	Salary	Salary

02252022payroll

Employee Name	Pay Record	Current Pay Group	History Pay Group	Current Benefit Group	History Benefit Group	Amount	Budget Account Code	Current Pay Type	History Pay Type
Stephens, William C	Pay 01	Salary	Salary	Highway	Highway	1,714.65	1176.11019.000.0529	Salary	Salary
Stephens, William C	Pay 01	Salary	Salary	Highway	Highway	723.35	1176.11021.000.0529	Salary	Salary
Waltz, Rita E	Pay 01	Part Time	Part Time	HD	HD	450.00	1206.11218.000.0610	Hourly	Hourly
Brown, Brittany A	Pay 01	Salary	Salary	Commissioners	Commissioners	134.14	1000.11021.000.0380	Salary	Salary
Brown, Brittany A	Pay 01	Salary	Salary	Commissioners	Commissioners	1,490.38	1000.11485.000.0380	Salary	Salary
Surber, Aaron S	Pay 01	Salary	Salary	Highway	Highway	1,575.38	1176.11009.000.0529	Salary	Salary
Brown, Christian C	Pay 01	Salary	Salary	Commissioners	Commissioners	163.08	1000.11021.000.0380	Salary	Salary
Brown, Christian C	Pay 01	Salary	Salary	Commissioners	Commissioners	2,038.46	1000.11480.000.0380	Salary	Salary
Gooding, Beth A	Pay 01	Salary	Salary	Commissioners	Commissioners	1,082.85	1000.11253.000.0380	Salary	Salary
Taylor, Michael G	Pay 01	Salary	Salary	Commissioners	Commissioners	341.40	1170.11021.000.0005	Salary	Salary
Taylor, Michael G	Pay 01	Salary	Salary	Commissioners	Commissioners	2,510.77	1170.11937.000.0005	Salary	Salary
Carrell, Henry W	Pay 01	Salary	Salary	Commissioners	Commissioners	1,667.58	1000.11733.000.0380	Salary	Salary
Conrad, Carolyn S	Pay 01	Salary	Salary	Commissioners	Commissioners	1,593.04	1000.11502.000.0232	Salary	Salary
Greene, Paula L	Pay 01	Salary	Salary	Commissioners	Commissioners	1,403.85	1000.11493.000.0380	Salary	Salary
Miller, Farren M	Pay 01	Salary	Salary	Commissioners	Commissioners	79.66	1000.11029.000.0201	Salary	Salary
Miller, Farren M	Pay 01	Salary	Salary	Commissioners	Commissioners	1,991.31	9178.11524.000.0235	Salary	Salary
Taylor, Greg L	Pay 01	Salary	Salary	Commissioners	Commissioners	68.85	1000.11021.000.0313	Salary	Salary
Taylor, Greg L	Pay 01	Salary	Salary	Commissioners	Commissioners	1,224.00	1000.11734.000.0313	Salary	Salary
Douglas, Scott K	Pay 01	Salary	Salary	HD	HD	1,153.85	1159.11162.000.0610	Salary	Salary
Needham, Michael R	Pay 01	Salary	Salary	Commissioners	Commissioners	3,861.50	1170.11175.000.0005	Salary	Salary
Bonwell, David M	Pay 01	Salary	Salary	Commissioners	Commissioners	2,475.92	1000.11732.000.0312	Salary	Salary
Kersey, Michael T	Pay 01	Salary	Salary	Commissioners	Commissioners	2,510.77	1170.11200.000.0005	Salary	Salary
French, Aaron D	Pay 01	Salary	Salary	Commissioners	Commissioners	470.63	1170.11021.000.0005	Salary	Salary
French, Aaron D	Pay 01	Salary	Salary	Commissioners	Commissioners	2,510.77	1170.11022.000.0005	Salary	Salary
Wolf, James M	Pay 01	Salary	Salary	Commissioners	Commissioners	576.92	1000.11138.000.0308	Salary	Salary
Sutherlin, Kirsten M	Pay 01	Salary	Salary	Commissioners	Commissioners	1,295.23	1000.11209.000.0235	Salary	Salary
Halle, Cheryl D	Pay 01	Salary	Salary	Commissioners	Commissioners	1,743.15	1000.11409.000.0009	Salary	Salary
Latzke, Kristen C	Pay 01	Salary	Salary	Commissioners	Commissioners	1,730.77	1000.11575.000.0750	Salary	Salary
Alenduff, Brandon R	Pay 01	Salary	Salary	Commissioners	Commissioners	171.90	1000.11021.000.0380	Salary	Salary
Alenduff, Brandon R	Pay 01	Salary	Salary	Commissioners	Commissioners	1,432.69	1000.11236.000.0380	Salary	Salary
Herron, Rhonda L	Pay 01	Salary	Salary	Commissioners	Commissioners	1,498.77	1000.11602.000.0002	Salary	Salary
Booth, Gary D	Pay 01	Salary	Salary	Commissioners	Commissioners	192.31	1000.11261.000.0061	Salary	Salary
Powell, Daniel E	Pay 01	Salary	Salary	Highway	Highway	411.78	1173.11090.000.0529	Salary	Salary
Powell, Daniel E	Pay 01	Salary	Salary	Highway	Highway	893.97	1176.11021.000.0529	Salary	Salary
Powell, Daniel E	Pay 01	Salary	Salary	Highway	Highway	1,322.03	1176.11076.000.0529	Salary	Salary
Bentley, Jennifer J	Pay 01	Salary	Salary	Commissioners	Commissioners	1,815.69	1189.11100.000.0004	Salary	Salary
Cornett, Alexander J	Pay 01	Salary	Salary	Highway	Highway	1,626.12	1176.11011.000.0529	Salary	Salary
Cornett, Alexander J	Pay 01	Salary	Salary	Highway	Highway	472.58	1176.11021.000.0529	Salary	Salary

02252022payroll

Employee Name	Pay Record	Current Pay Group	History Pay Group	Current Benefit Group	History Benefit Group	Amount	Budget Account Code	Current Pay Type	History Pay Type
Nine, Mercedes E	Pay 01	Salary	Salary	Commissioners	Commissioners	1,403.85	1000.11838.000.0380	Salary	Salary
Shaw, Devin J	Pay 01	Salary	Salary	Commissioners	Commissioners	540.10	1000.11021.000.0380	Salary	Salary
Shaw, Devin J	Pay 01	Salary	Salary	Commissioners	Commissioners	1,375.00	1000.11352.000.0380	Salary	Salary
Stull, James D	Pay 01	Salary	Salary	Highway	Highway	376.18	1173.11090.000.0529	Salary	Salary
Stull, James D	Pay 01	Salary	Salary	Highway	Highway	299.77	1176.11021.000.0529	Salary	Salary
Stull, James D	Pay 01	Salary	Salary	Highway	Highway	1,504.74	1176.11071.000.0529	Salary	Salary
Davidson, Mark A	Pay 01	Salary	Salary	Commissioners	Commissioners	192.31	1000.11261.000.0061	Salary	Salary
Williamson, Lindsay J	Pay 01	Salary	Salary	Commissioners	Commissioners	1,276.04	1000.11159.000.0011	Salary	Salary
Rivers, Jennifer J	Pay 01	Salary	Salary	Commissioners	Commissioners	1,569.23	1000.11113.000.0753	Salary	Salary
Harrington, Shari L	Pay 01	Salary	Salary	Commissioners	Commissioners	2,125.31	1000.11095.000.9655	Salary	Salary
Walsh, Todd P	Pay 01	Salary	Salary	Commissioners	Commissioners	85.30	1170.11021.000.0005	Salary	Salary
Walsh, Todd P	Pay 01	Salary	Salary	Commissioners	Commissioners	2,311.54	1170.11938.000.0005	Salary	Salary
Haslam, Brittany R	Pay 01	Salary	Salary	CCC 1222	CCC 1222	1,715.42	1222.11212.000.0303	Salary	Salary
Byers, Mindy K	Pay 01	Salary	Salary	Commissioners	Commissioners	2,140.54	1000.11300.000.0002	Salary	Salary
Grayson, Peggy S	Pay 01	Salary	Salary	Commissioners	Commissioners	1,849.27	1224.11300.000.0008	Salary	Salary
Jenkins Jr, Rodney L	Pay 01	Salary	Salary	Commissioners	Commissioners	369.92	1170.11021.000.0005	Salary	Salary
Jenkins Jr, Rodney L	Pay 01	Salary	Salary	Commissioners	Commissioners	2,589.23	1170.11315.000.0005	Salary	Salary
Myers, Laren E	Pay 01	Salary	Salary	Commissioners	Commissioners	1,629.35	1170.11975.000.0005	Salary	Salary
Cerda, Jonathan	Pay 01	Salary	Salary	Commissioners	Commissioners	1,432.69	1000.11500.000.0380	Salary	Salary
Lazell, Lula D	Pay 01	Salary	Salary	Commissioners	Commissioners	121.30	1000.11021.000.0380	Salary	Salary
Lazell, Lula D	Pay 01	Salary	Salary	Commissioners	Commissioners	1,294.12	1000.11243.000.0380	Salary	Salary
323						428,005.63			

Minutes: 2-14-22

Tuesday, February 22, 2022 9:30 AM

MINUTES
MONTGOMERY COUNTY COMMISSIONER MEETING
MONDAY, FEBRUARY 14, 2022

The Montgomery County Commissioners met in regular session on Monday, February 14, 2022 at 8:00 am at the Montgomery County Courthouse, 100 E. Main Street – Room 103, Crawfordsville, Indiana.

CALL TO ORDER

On call of the roll, the members of the Board were shown to be present as follows: President John E. Frey; Vice President James D. Fulwider and Commissioner Dan Guard.

Also present: County Attorney Dan Taylor; County Administrator Tom Klein; Auditor Jennifer Andel; Building Administrator Marc Bonwell; Sheriff Ryan Needham; Highway Director Jake Lough; County Engineer James Peck; Treasurer Heather Laffoon; Chief Probation Office Andria Giegler; and Commissioners Executive Assistant Lori Dossett.

PLEDGE & PRAYER

Board President Commissioner John E. Frey led the pledge of allegiance and Commissioner Fulwider led the prayer.

CONSENT AGENDA

Approval of Claims: January 24, 2022 to February 14, 2022

Approval of Minutes: January 24, 2022

NEW BUSINESS

Agreement – IWM Consulting Group

A proposal for Professional Environmental Services - Former Southside Mobil (Tri County Petroleum) South US Highway 231. Services to include preparing and submitting the POSI (Petroleum Orphan Site Initiative) application and communicating with the appropriate representatives from the Indiana Brownfields Program (IBP) and Indiana Department of Environmental Management (IDEM) regarding the POSI application.

Commissioner Fulwider moved to approve the IWM Consulting Group Agreement. Seconded by Commissioner Guard. Motion carried 3-0 votes in favor.

**Pass through Agreement - Montgomery County Community Foundation
& Montgomery County Family Recovery Court**

Superior Court II Judge Daniel Petrie has submitted a request to establish a fund at the Community Foundation to help with the new Family Recovery Court. We cannot accept donations to the program directly through the Court or the County. This requires no financial contribution on the part of the County, simply its authority.

Commissioner Fulwider moved to approve the Pass through Agreement with the MCCF and Family Recovery Court. Seconded by Commissioner Guard. Motion carried 3-0 votes in favor.

Indiana Finance Authority – Mace Water Infrastructure Grant Program

The County has received a State grant in the amount of \$446,200 for stormwater improvements. The agreement outlines the obligations of the County to construct the project including the requirement to complete the project within 18 months from the date of the agreement. It also requires that the project commences within 6 months from the date of the agreement. *Commissioner Guard moved to approve the Indiana Finance Authority Agreement. Seconded by Commissioner Fulwider. Motion carried 3-0 votes in favor.*

Contracts for Public Defender's Office Alex Robbins, Melissa Garten, Riley Parr and Todd Meyer

Contracts with attorneys to provide public defense representation. Alex Robbins' contract will be for 75 cases per year at a fixed fee of \$16,000. Melissa Garten's contract will be for 75 cases per year at a fixed fee of \$16,000. Riley Parr's contract will be \$16,000 per year with no set number of cases. Todd Meyer's contract will be for 60 cases per at a fixed fee of \$18,000. *Commissioner Guard move to approve the Public Defenders Contracts for Robbins, Garten, Parr and Meyer. Seconded by Commissioner Fulwider.* Commissioner Fulwider questioned if there were plans moving forward with the Public Defender's Office staffing issues. *Motion carried 3-0 votes in favor.*

Bridge 182 Replacement - CivilCon, Inc. Consultant Services Agreement - NTE \$20,000

CivilCon for Bridge #182 engineering design, preparation of construction plans and submittal for an IDEM 401/USACOE 404 Regional General Permit. The replacement of bridge #182 will be funded with the Cumulative Bridge tax and the project is part of the 10-year bridge improvement plan. *Commissioner Fulwider moved to approve the CivilCon, Inc. Consultant Services Agreement. Seconded by Commissioner Guard. Motion carried 3-0 votes in favor.*

Change Order: Bridge 114 Project-CLR, Inc.

The construction documents, prepared by BLN, were set up as a unit cost contract. Based upon the measured field quantities the project required additional milling, asphalt paving, bridge pier/deck patching and latex modified concrete. The project was completed 28 days beyond the contract date, therefore liquidated damages were applied. The total change order amount, including liquidated damages, is \$37,422.51. The amount will be paid from the Cum Bridge Fund. *Commissioner Fulwider moved to approve the Change Order for Bridge 114. Seconded by Commissioner Guard. Motion carried 3-0 votes in favor.*

2021-2 CCG Contract Award

Two bids for the 2021-2 Community Crossing Grant to pave CR400W from US 136 to Old SR 55, CR350W from Washington Street to CR1100N, CR1100N from CR350W to CR100W, CR700E from CR500N to CR575N, CR300N from CR425 to CR625E and CR775E from US136 to CR500S. Total paving project 9.2 miles. County Engineer Peck recommends the Commissioners accept the low and responsible bid from Rieth-Riley Construction Co., Inc. in the amount of \$1,362,851.45. *Commissioner Guard moved to approve the 2021-2 CCG Contract Award. Seconded by Commissioner Fulwider. Motion carried 3-0 votes in favor.*

Highway Department 2022 50/50 Dust Program

The Highway Department will be offering the 2022 50/50 Dust Control Program. Sign-up is from 2-15-22 to 4-8-22. The costs are as follows:

Length of Application	Montgomery County Responsibility	Resident Responsibility	Total Cost
300 ft	\$255.00	\$255.00	\$510.00
400 ft	\$313.00	\$313.00	\$626.00
500 ft	\$370.00	\$370.00	\$740.00
600 ft	\$425.00	\$425.00	\$850.00
Every 100 ft after 600 ft	\$0.00	\$115.00	\$115.00

ORDINANCES

2nd Reading: Ordinance 2022-2 - Create 2022 VASIA Grant Special Condition Fund

Superior Court 2 has been awarded a grant to establish a Volunteer Adult Guardianship Program. The grant is for \$38,500 and will be used to recruit and train 5 new volunteers by June 30, 2022. *Commissioner Fulwider moved to approve Ordinance 2022-2. Seconded by Commissioner Guard. Motion carried 3-0 votes in favor.*

Introduction: Ordinance 2022-5: Amending Employee Handbook and Adopting Additional Paid Time Off Policy

Ordinance establishes a leave benefit for employees that work during an inclement weather event that closes the County offices.

Suspend Rules to 2nd Reading: Ordinance 2022-5: Amending Employee Handbook and Adopting Additional Paid Time Off Policy

Commissioner Guard moved to suspend the rules to add 2nd Reading of Ordinance 2022-5. Seconded by Commissioner Fulwider. Motion carried 3-0 votes in favor.

2nd Reading: Ordinance 2022-5: Amending Employee Handbook and Adopting Additional Paid Time Off Policy

Commissioner Guard moved to approve Ordinance 2022-5. Seconded by Commissioner Fulwider. Motion carried 3-0 votes in favor.

ADJOURNMENT

There being no further business before the Board, *Commissioner Fulwider moved to adjourn. Commissioner Guard seconded. Motion passed 3-0 votes in favor.*

Meeting adjourned at 8:27 am.

Minutes prepared by Commissioners Executive Assistant Lori Dossett.

The next regular meeting will be held on Monday, February 28, 2022 @ 8:00 am at the Montgomery County Courthouse.

MONTGOMERY COUNTY BOARD OF COMMISSIONERS:

John E. Frey, Board President

Attest:

Jennifer Andel, Auditor

2021 Annual Solid Waste Management District Report

Tuesday, February 22, 2022 9:39 AM

Petition to Vacate County Road - Rob Hudson

Thursday, February 24, 2022 2:25 PM

Petition to Vacate County Road

Pursuant to IC 36-7-3-1, I hereby request that the Montgomery County Board of Commissioners vacate Parcel # 07-31-111-001 000-028
Old Oak Hill Road in Montgomery County, Indiana. In support of this request, I represent as follows:

1. I own land ~~adjacent to~~ @ 907 Lafayette Ave / Old Oak Hill Rd
Montgomery County, Indiana;

2. The purpose of my request is that the road is not used significantly by the public;

3. Vacation of Roadway in front + on side of property
Montgomery County, will not:

a. hinder the growth and orderly development in the area;

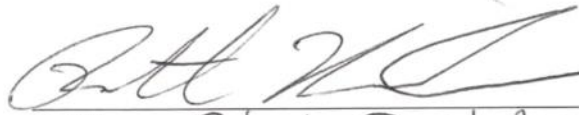
b. hinder the public's access to a church, school or other public building; and

c. hinder the use of the road by a neighborhood in which it is located or contiguous.

4. The names and addresses of all owners of land that abuts the road proposed to be vacated are attached as Exhibit A.

5. I understand that I must pay the cost of mailing to each land owner identified in Exhibit A (by Certified Mail) a notice of this Petition and of a public hearing concerning my request.

Date: 8-9-2021


Petitioner, Robert B Hudson

Email Address:

RS Hudson@comcast.net

406 S. Winton St.
Address Crawfordsville IN

765-230-6155
Telephone Number

Supplement and Supporting Documentation
Request to Vacate Roadway—907 Lafayette Ave.

To Whom it May Concern:

Please allow this documentation and explanation to accompany my Petition to vacate the roadway in front of my property at 907 Lafayette Ave, Crawfordsville, IN 47933.

I have owned this property for approximately 10 years and operate a used automobile dealership from this location. The road has been in poor condition since the time of purchase and creates both a hazard to passing cars due to potholes, (See attachment) as well as creating considerable dust as cars pass and kick up the residue left by habitual sand and dirt in roadway from snow removal crews (see pictures). Numerous attempts throughout the years to request attention to roadway have resulted in little to no attention given to repair or cleaning of the road. The conditions make upkeep of my business property and automobile inventory virtually impossible. Additionally, prior to my purchase, as the road has been repaved, previous crews have apparently altered the roadbed to create a "Curve" where the previous road was engineered as a 90 Deg stop intersection. This adds a dangerous tendency for traffic to speed around the curve rather than stop and turn as originally designed. The result is, I believe, a trespass of the road onto private property and creates a difficulty in defining the borders of my property and where the road was originally built. (See attachment pics of current road and site drawing)

Attempts both with City of Crawfordsville and Montgomery County have been answered by explanation that this is a shared roadway between City and County and containing unclear responsibilities. As the Commissioners may well be aware, the County has recently accepted jurisdiction to maintain the road, however, Mr. Klein informs me there are no current plans to maintain, correct, clean up, or improve the road despite that additional destruction of the roadbed by Gas company projects this summer. (See attached)

This roadway is duplicated within approximately 75 yards by an alternate road (Oak Hill) that is well maintained, and approximately equidistant to service the very few (approx. 3-4) residents adjacent to this property. Use of this roadway constitutes additional hazard to any users, most of whom may be being misdirected to use it by GPS systems anyway.

As it appears the County and City are mutually un-motivated to both repair the roadway, and correct the trespass, and continued use and winter maintenance is likely result in a repeat of the poor condition, I am respectfully requesting that both municipalities agree to vacate the roadway and close this egress to vehicular traffic.

Respectfully submitted

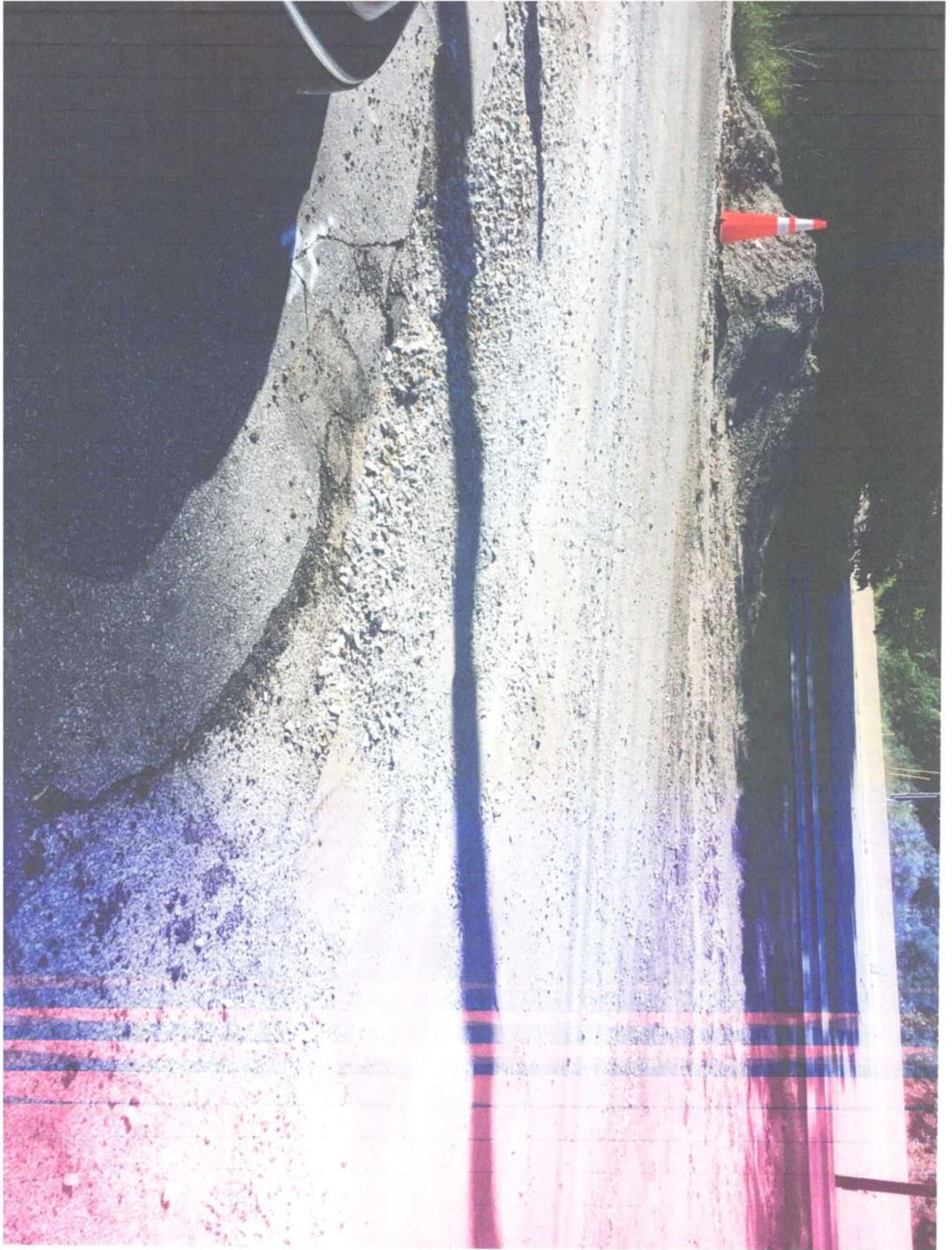
Robert B Hudson
Landowner.

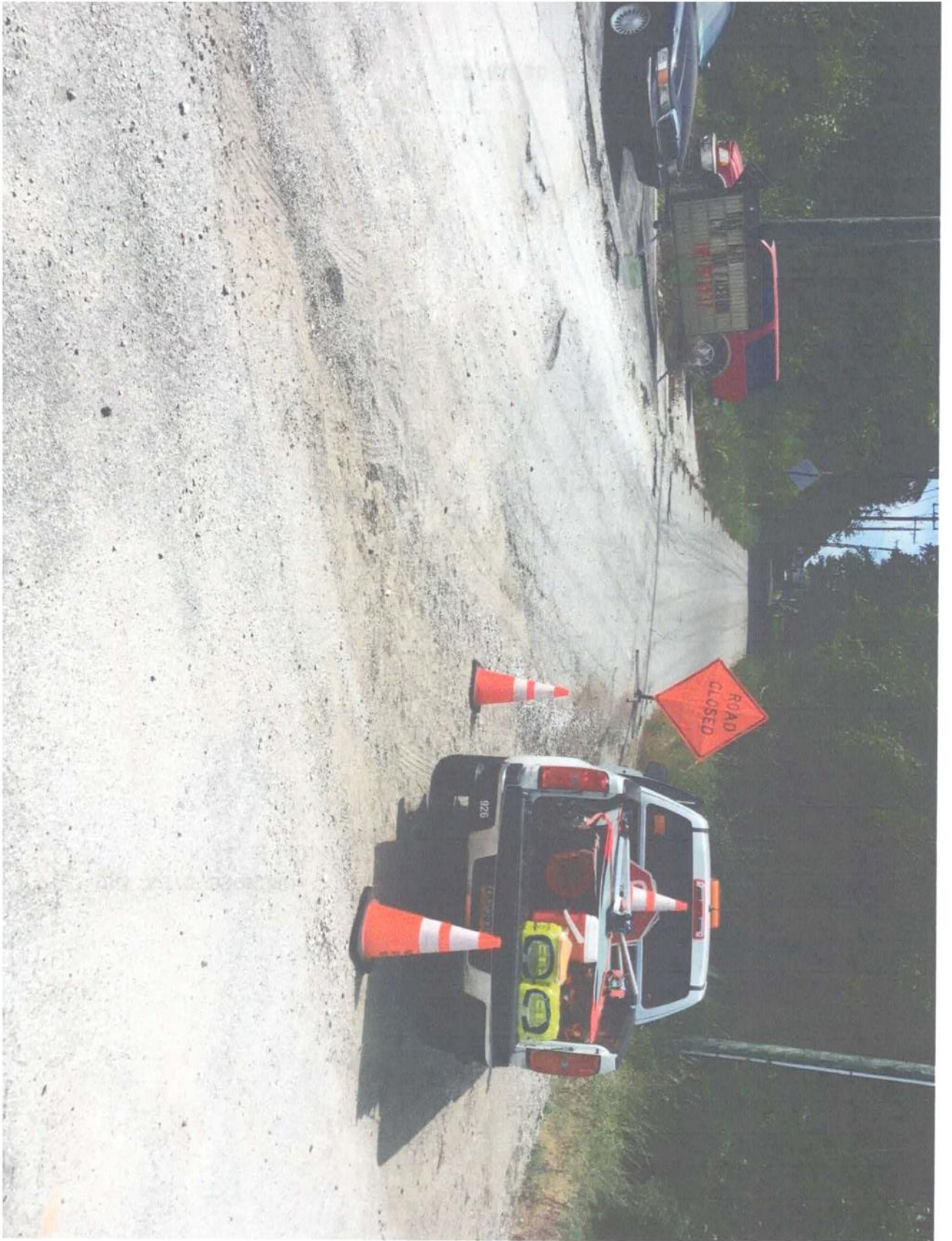
765-230-6155



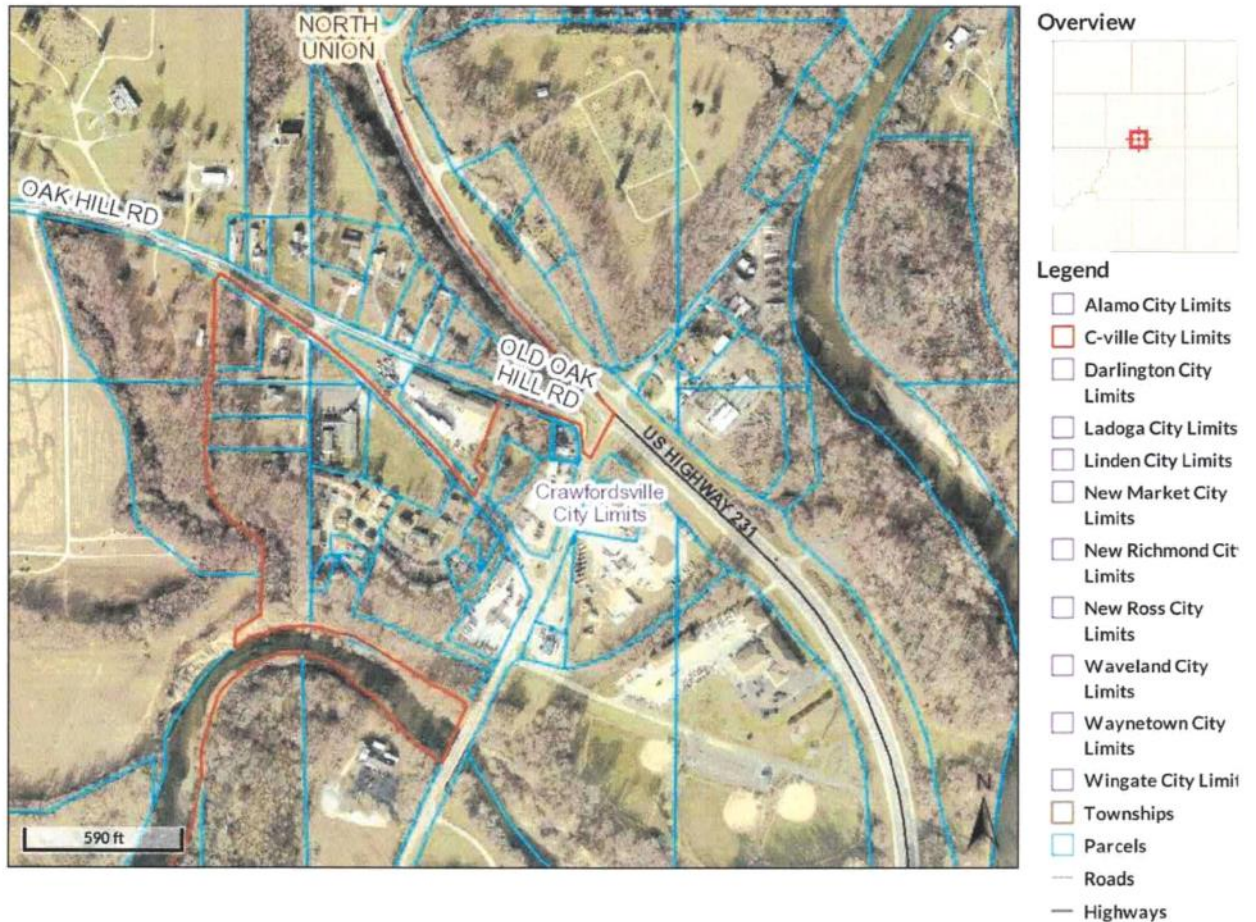








Rob Hudson Request to Vacate a Portion of Old Oak Hill Road



Parcel ID	54-07-31-111-001.000-028	Alternate ID	024-16001-02	Owner Address	HUDSON ROBERT B 406 S WATER ST CRAWFORDSVILLE, IN 47933
Sec/Twp/Rng	31-19-4	Class	439 COM OTHER FOOD SERVICE STRUCT-		
Property Address	907 LAFAYETTE AVE CRAWFORDSVILLE	Acreage	0.23		
District	CVILLE O S NORTH				
Brief Tax Description	PT NEQ 31-19-4.23 A				
	(Note: Not to be used on legal documents)				

Date created: 1/18/2022
Last Data Uploaded: 1/18/2022 1:41:25 PM

Developed by Schneider
GEOSPATIAL

Hearing: Re-Establish Cumulative Capital Development Fund

Tuesday, February 22, 2022 9:38 AM

Montgomery County Board of Commissioners

**NOTICE TO TAXPAYERS OF HEARING ON RE-ESTABLISHMENT OF
CUMULATIVE CAPITAL DEVELOPMENT FUND**

Notice is hereby given to the taxpayers of Montgomery County, Indiana that the Montgomery County Board of Commissioners will consider at Room 103 of the Montgomery County Courthouse, 100 East Main Street, Crawfordsville, Indiana at 8 o'clock a.m. on 28 February, 2022, the re-establishment of the Cumulative Capital Development Fund under the provisions of Indiana Code §36-9-14.5 for the following purposes: construction, remodeling and repair of the courthouse, construction, repair, remodeling, enlargement of and equipment for a county jail or juvenile detention facility, the purchase, lease or payment of all or part of the motor vehicles for the community corrections program, purchase, construction and maintenance of public buildings and equipment therefor, acquisition of land and improvements that are necessary for construction of public buildings, for the demolition of any improvements on land to be acquired to level grade and prepare land for construction of a public building, provide funds for a cumulative drainage fund, acquire land or rights-of-way to be used for public ways or sidewalks, construction and maintenance of public ways or sidewalks, acquire land or rights-of-way for the construction of sanitary sewers or storm sewers, or both, to construct or maintain sanitary sewers or storm sewers or both, to purchase, lease or pay for all or part of a utility, to acquire, by purchase or lease, land, buildings or rights-of-way for the use of any utility that is acquired or owned by the County, to purchase or acquire land, with or without buildings, for park or recreational purposes, to purchase, lease or pay all or part of the purchase price of motor vehicles for the use or any combination of the police, community corrections program or fire department, to retire in whole or part or in part any general obligation bonds of the County, to purchase or lease equipment and other non-consumable personal property needed for any public transportation use, to purchase or lease equipment to be used to illuminate a public way or sidewalk, to purchase, lease, upgrade, maintain or repair computer hardware, computer software, wiring and computer networks, communication access systems used to connect with computer networks or electronic gateways, to pay for the services of full-time or part-time computer maintenance employees, to conduct nonrecurring in-service technology training of employees, and to purchase body armor for active members of the County police department.

If accommodations are required to attend this meeting, please contact Auditor Jennifer Andel at 765-364-6403.

The tax will be levied on all taxable real and personal property in Montgomery County and will not exceed \$0.0333 per \$100 of assessed valuation. The proposed tax will be levied beginning with taxes for 2022 which are due and payable in the year 2023. Taxpayers appearing at this public hearing will have the right to be heard on this issue. The proposal to re-establish the Cumulative Capital Development Fund is subject to approval by the Department of Local Government Finance.

Within thirty (30) days of the adoption of the ordinance re-establishing the Cumulative Capital Development Fund by the Board of Commissioners of Montgomery County, Montgomery County will publish a Notice of Adoption. Upon publication of the Notice of Adoption, fifty (50) or more taxpayers in the taxing district (Montgomery County) may file a petition with the County Auditor not later than 12 noon, thirty (30) days after the publication of the Notice of Adoption setting forth their objections to the proposed fund.

Dated this 14th day of January, 2022.

Board of Commissioners of Montgomery County, Indiana

Please publish two times: February 16, 2022 and February 23, 2022

Hearing: Re-Establish Cumulative Bridge Fund

Tuesday, February 22, 2022 9:38 AM

Montgomery County Board of Commissioners
NOTICE TO TAXPAYERS OF HEARING ON RE-ESTABLISHMENT OF
CUMULATIVE BRIDGE FUND

Notice is hereby given to the taxpayers of Montgomery County, Indiana that the Montgomery County Board of Commissioners will consider at Room 103 of the Montgomery County Courthouse, 100 East Main Street, Crawfordsville, Indiana at 8 o'clock a.m. on February 28, 2022, the re-establishment of the Cumulative Bridge Fund under the provisions of Indiana Code §8-16-3 for the following purposes: the construction, repair, maintenance and inspection of bridges in Montgomery County.

If accommodations are required to attend this meeting, please contact Auditor Jennifer Andel at 765-364-6403.

The tax will be levied on all taxable real and personal property in Montgomery County and will not exceed \$0.075 per \$100 of assessed valuation. The proposed tax will be levied beginning with taxes due and payable in the year 2023. Taxpayers appearing at this public hearing will have the right to be heard on this issue. The proposal to re-establish the Cumulative Bridge Fund is subject to approval by the Department of Local Government Finance.

Within thirty (30) days of the adoption of the ordinance re-establishing the Cumulative Bridge Fund by the Board of Commissioners of Montgomery County, Montgomery County will publish a Notice of Adoption. Upon publication of the Notice of Adoption, ten (10) or more taxpayers in the taxing district (Montgomery County) may file a petition with the County Auditor not later than 12 noon, thirty (30) days after the publication of the Notice of Adoption setting forth their objections to the proposed fund.

Dated this 14th day of February, 2022.

Board of Commissioners of Montgomery County, Indiana

Please publish two times: February 16, 2022 and February 23, 2022

Agreement to Create Community Development Corporation

Tuesday, February 22, 2022 9:31 AM

Plan Resolution - OTC Testing

Thursday, February 24, 2022 9:06 AM

Plan Resolution

County of Montgomery Indiana

Effective February 1, 2022 the County of Montgomery Indiana (the "Plan") is hereby amended to provide enhanced health benefits associated with testing for and treatment of the 2019 Novel Coronavirus (COVID-19). This Resolution will remain effective until the end of the public health emergency.

All other sections of the Plan remain unchanged.

1. In the **Summary of Benefits** section, under the "Summary of Benefits—Medical" provision, the following line item has been added to the medical benefits grid:

Covered Medical Expenses	Network	Non-Network	Limits
Option 1: <input type="checkbox"/> FDA authorized, cleared, or approved Over the Counter Test for the 2019 Novel Coronavirus (COVID-19)	100%; deductible waived		
Option 2: <input type="checkbox"/> FDA authorized, cleared, or approved Over the Counter Test for the 2019 Novel Coronavirus (COVID-19)	100%, Deductible waived		Limited to 8 test per Covered Person per Month if not prescribed by a physician. Must submit claim for reimbursement
Option 3: <input type="checkbox"/> FDA authorized, cleared, or approved Over the Counter Test for the 2019 Novel Coronavirus (COVID-19)	100%, Deductible waived through the drug card. See RX Benefit Section	100 %, * Deductible waived	Limited to 8 test per Covered Person per month if not prescribed by a physician. *OTC test not purchased through the drug card limited to a max reimbursement of lesser of cost of the test or \$12/test

2. **Only added if Option 3 is selected above:** In the **Prescription Drug Plan Benefits** section, the following benefit language for "2019 Novel Coronavirus (COVID-19)" has been added:

FDA authorized, cleared, or approved Over the Counter Test for 2019 Novel Coronavirus (COVID-19). Over the counter test for the testing for COVID-19 are covered at 100%. Test that are purchased without a prescription are limited to 8 per Covered Person per month.

3. **Only Add if Policies have changed due to 2019 Novel Coronavirus (COVID-19):** In the **Coverage During Leave of Absence** section, the following provision has been added:

Employer Continuation Coverage

Eligible Participants may seek to continue coverage upon the occurrence of any of the following:

- ☐ Layoff: coverage will continue for _____ months following the date of layoff.
- ☐ Short-Term Disability Leave: coverage will continue for _____ months following termination of Active Employment.
- ☐ Long-Term Disability Leave: coverage will continue for _____ months following termination of Active Employment.
- ☐ Americans with Disabilities Act (ADA) Leave; A non-FMLA leave granted by the Employer in accordance with the ADA: coverage will continue for a period not to exceed _____ months.
- ☐ Leave of Absence (not meeting the definition of FMLA Leave): coverage will continue for _____ months.
- ☐ Other: _____

The above-noted leave(s)

- ☐ Do
- ☐ do not

run concurrently with FMLA, USERRA, or any state-mandated family or medical leave, and/or any other applicable leaves of absence. At the end of the period(s) listed above, the Participant's coverage will be deemed to have terminated for purposes of Continuation of Coverage under COBRA.

4. **Only Add if Policies have changed due to 2019 Novel Coronavirus (COVID-19):** In the **Eligibility for Coverage** section, the following has been changed:

- ☐ The number of hours to be considered a full-time employee eligible for coverage has been change to _____ hours per week/month.
- ☐ Other: _____

All other sections of the Plan remain unchanged.

APPROVED AND ACCEPTED

By: _____
Signature

Title: _____

Date: _____

Intro: Ord 2022-6 Re-Establish Cumulative Capital Development Fund

Tuesday, February 22, 2022 9:30 AM

Montgomery County Board of Commissioners

Ordinance 2022 – 6

An Ordinance Re-Establishing the Cumulative Capital Development Fund

Whereas, the Montgomery County Board of Commissioners previously established a Cumulative Capital Development Fund (“CCD Fund”) and imposed a tax levy for it under Indiana Code §6-1.1-41 to provide money for authorized purposes for which property taxes may be imposed in accordance with Indiana Code §36-9-14.5, including but not limited to construction, remodeling and repair of the courthouse, construction, repair, remodeling, enlargement of and equipment for a county jail or juvenile detention facility, the purchase, lease or payment of all or part of the motor vehicles for the community corrections program, purchase, construction and maintenance of public buildings and equipment therefor, acquisition of land and improvements that are necessary for construction of public buildings, for the demolition of any improvements on land to be acquired to level grade and prepare land for construction of a public building, provide funds for a cumulative drainage fund, acquire land or rights-of-way to be used for public ways or sidewalks, construction and maintenance of public ways or sidewalks, acquire land or rights-of-way for the construction of sanitary sewers or storm sewers, or both, to construct or maintain sanitary sewers or storm sewers or both, to purchase, lease or pay for all or part of a utility, to acquire, by purchase or lease, land, buildings or rights-of-way for the use of

any utility that is acquired or owned by the County, to purchase or acquire land, with or without buildings, for park or recreational purposes, to purchase, lease or pay all or part of the purchase price of motor vehicles for the use or any combination of the police, community corrections program or fire department, to retire in whole or part or in part any general obligation bonds of the County, to purchase or lease equipment and other non-consumable personal property needed for any public transportation use, to purchase or lease equipment to be used to illuminate a public way or sidewalk, to purchase, lease, upgrade, maintain or repair computer hardware, computer software, wiring and computer networks, communication access systems used to connect with computer networks or electronic gateways, to pay for the services of full-time or part-time computer maintenance employees, to conduct nonrecurring in-service technology training of employees, and to purchase body armor for active members of the County police department; and

Whereas, the Board of Commissioners desires to re-establish the CCD Fund and maintain the tax rate at the maximum rate allowed by law; and

Whereas, the current tax rate for the CCD Fund is \$0.0333 per \$100 of assessed valuation, and the maximum property tax rate for the CCD Fund under Indiana Code §36-9-14.5 is \$0.0333 per \$100 of assessed valuation; and

Whereas, the Board of Commissioners desires to re-establish the CCD Fund and to maintain the tax rate for the fund to \$0.0333 per \$100 of assessed valuation; and

Whereas, the Commissioners provided to the taxpayers of Montgomery County notice of this proposed ordinance and of the public hearing, as required by Indiana Code §5-3-1, by publishing on February 16, 2022 and February 23, 2022 notice of the public hearing in the *Journal Review* and *The Paper of Montgomery County*, two newspapers of general circulation in Montgomery County, Indiana; and

Whereas, the Commissioners conducted a public hearing on the proposed ordinance on the 28th day of February, 2022 at which time no taxpayers testified regarding the proposed tax rate; and

Whereas, the Commissioners have purposes for which the funds can be spent and desire to maintain the CCD Fund's tax rate at the maximum amount allowed by Indiana Law; and

Whereas, introduced this ordinance on January 24, 2022; and

Whereas, the Commissioners find that the Cumulative Capital Development Fund should be re-established and that the tax rate should be maintained at \$0.0333 per \$100 assessed valuation.

It is therefore ordained by the Montgomery County Board of Commissioners that:

Section 1. Cumulative Capital Development Fund Re-Establishment.

The Montgomery County Board of Commissioners hereby re-establishes the Cumulative Capital Development (CCD) Fund pursuant to Indiana Code §6-1.1-41, to be used for all purposes allowed and set forth in Indiana Code §36-9-14.5, including but not limited to construction, remodeling and repair of the courthouse, construction, repair, remodeling, enlargement of and equipment for a county jail or juvenile detention facility, the purchase, lease or payment of all or part of the motor vehicles for the community corrections program, purchase, construction and maintenance of public buildings and equipment therefor, acquisition of land and improvements that are necessary for construction of public buildings, for the demolition of any improvements on land to be acquired to level grade and prepare land for construction of a public building, provide funds for a cumulative drainage fund, acquire land or rights-of-way to be used for public ways or sidewalks, construction and maintenance of public ways or sidewalks, acquire land or rights-of-way for the construction of sanitary sewers or storm sewers, or both, to construct or maintain sanitary sewers or storm sewers or both, to purchase, lease or pay for all or part of a utility, to acquire, by purchase or lease, land, buildings or rights-of-way for the use of any utility that is acquired or owned by the County, to purchase or acquire land, with or without buildings, for park or recreational purposes, to purchase, lease or pay all or part of the purchase price of motor vehicles for the use or any combination of the police, community corrections program or fire department, to retire in whole or part or in part any general obligation bonds of the County, to purchase or lease equipment and other non-consumable personal property needed for any public transportation use, to purchase or lease equipment to be used to illuminate a public way or sidewalk, to purchase, lease, upgrade, maintain or repair computer hardware, computer software, wiring and computer networks, communication access systems used to connect with computer networks or electronic gateways, to pay for the services of full-time or part-time computer maintenance employees, to conduct nonrecurring in-service technology training of employees, and to purchase body armor for active members of the County police department, and now establish the rate to be Three and thirty-three one-hundredths cents (\$0.0333) per One Hundred Dollars (\$100.00) of assessed valuation on all taxable real and personal property in Montgomery County, Indiana.

Section 2. Tax Rate. The County Board of Commissioners now levies a tax on all real and personal property in Montgomery County to provide funds to the CCD Fund, with a tax rate of \$0.0333 on each \$100 of assessed valuation. This tax rate will be levied beginning with taxes for 2022 and payable in 2023.

Section 3. Publication of Notice of Adoption. The Auditor shall publish a notice of this ordinance's adoption within thirty (30) days of its adoption.

Section 4. DLGF Approval. This ordinance is subject to the Indiana Department of Local Government Finance's approval. The Commissioners direct the County Auditor to submit to the Indiana Department of Local Government Finance a certified copy of this ordinance, the Notice of the Board's February 28, 2022 public hearing, the Notice of Adoption, and all proofs of publication for both Notices. This submission for the Department of Local Government Finance's approval must be made before April 30, 2022 all as provided in Indiana Code § 6-1.1-41-4.

Section 5. Advertisement. The Auditor shall annually advertise this tax levy in the same manner as other tax levies are advertised.

Section 6. Repeal of Conflicting Ordinances. The provisions of all other County ordinances in conflict with the provisions hereof, if any, are of no further force or effect and are hereby repealed.

Section 7. Duration and Effective Date. The provisions of this Ordinance shall become effective immediately and remain in full force and effect until repealed by ordinance.

Adopted this 28th day of February, 2022.

Montgomery County, Indiana
Board of Commissioners

Voting Yes:

Voting No:

John Frey, President

James D. Fulwider, Vice President

Dan Guard, Member

Attest:

Jennifer Andel, Auditor

Intro: Ord 2022-7 Re-Establish Cumulative Bridge Fund

Tuesday, February 22, 2022 9:30 AM

Montgomery County Board of Commissioners

Ordinance 2022 – 7

An Ordinance Re-Establishing the Cumulative Bridge Fund

Whereas, the Montgomery County Board of Commissioners has expressed a desire to re-establish and maintain a Cumulative Bridge Fund (“Cum Bridge Fund”), as provided for in Indiana Code §8-16-3, and impose a tax levy on all real and personal property in Montgomery County, under Indiana Code §6-1.1-41, to provide money for the construction, repair, maintenance and inspection of bridges in Montgomery County; and

Whereas, the tax rate for 2022 for the Cumulative Bridge Fund is \$0.075 per \$100 of assessed valuation, and the maximum property tax rate for the Fund per Indiana Code §8-16-3 is \$0.10 per \$100 of assessed valuation; and

Whereas, the Commissioners provided to the affected taxpayers of Montgomery County notice of this proposed ordinance and of the public hearing, as required by Indiana Code §5-3-1, by publishing on February 16, 2022 and February 23, 2022 notice of the public hearing in the *Journal Review* and *The Paper of Montgomery County*, two newspapers of general circulation in Montgomery County, Indiana; and

Whereas, the Commissioners conducted a public hearing on the proposed ordinance on February 28, 2022 at which time no taxpayers testified

regarding the re-establishment of the Cumulative Bridge Fund and the proposed increase in the tax rate of such Fund; and

Whereas, the Commissioners introduced this ordinance on January 24, 2022; and

Whereas, the Indiana Department of Local Government Finance may, under Indiana law, adjust the County's maximum tax rate for the Cumulative Bridge Fund based on trending and reassessment of taxable property located in the County, and the proposed tax increase is subject to approval by the Department; and

Whereas, the Commissioners have a purpose for which the funds can be spent, specifically the construction, repair, maintenance and inspection of bridges, and desire to reestablish the tax rate of the Cumulative Bridge Fund at the proposed rate of \$0.075 per \$100 assessed valuation; and

Whereas, the Commissioners find that the Cumulative Bridge Fund should be re-established and that the tax rate for the Cumulative Bridge Fund should be \$0.075 per \$100 assessed valuation.

It is therefore ordained that the Montgomery County Board of Commissioners enact:

Section 1. Cumulative Bridge Fund Re-Establishment. The Montgomery County Board of Commissioners hereby re-establishes the Cumulative Bridge Fund pursuant to Indiana Code §6-1.1-41, to be used for the purposes allowed and set forth in Indiana Code §8-16-3, including the construction, repair, maintenance and inspection of bridges, and now establish the rate to be \$0.075 per \$100 assessed valuation on all taxable real property and personal property in Montgomery County, Indiana.

Section 2. Tax Rate. The County Board of Commissioners now levies a tax on all real and personal property in Montgomery County to provide funds to the Cumulative Bridge Fund. The property tax will not exceed \$0.075 on each \$100 of assessed valuation. This tax rate will be levied beginning with taxes for 2022, due and payable in 2023.

Section 3. DLGF Approval. The County Board of Commissioners directs the County Auditor to submit, to the Indiana Department of Local Government Finance, all proofs of publication of the notices to taxpayers and the Commissioner's public hearing held on February 28, 2022 and a certified copy of this ordinance, as provided by Indiana Code § 6-1.1-41-4, as the County's proposal for re-establishing the Cumulative Bridge Fund and imposing a tax levy by the County to be approved by the Department of Local Government Finance. This proposal must be submitted to the Indiana Department of Local Government Finance before May 1, 2022, in accordance with Indiana Code § 6-1.1-41-5. This ordinance is subject to the approval of the Indiana Department of Local Government Finance.

Section 4. Publication of Notice of Adoption. The Auditor shall publish notice of adoption of this ordinance within thirty (30) days of the adoption of this ordinance.

Section 5. Advertisement. The Auditor shall annually advertise this tax levy in the same manner as other tax levies are advertised.

Section 5. Repeal of Conflicting Ordinances. The provisions of all other County ordinances in conflict with the provisions hereof, if any, are of no further force or effect and are hereby repealed.

Section 6. Duration and Effective Date. The provisions of this Ordinance shall become effective immediately and remain in full force and effect until repealed by ordinance.

Adopted this 28th day of February, 2022.

Montgomery County, Indiana
Board of Commissioners

Voting Yes:

Voting No:

John Frey, President

James D. Fulwider, Vice President

Dan Guard, Member

Attest:

Jennifer Andel, Auditor

Intro: Ord 2022-8 - Law Enforcement Training Fund

Tuesday, February 22, 2022 9:31 AM

Montgomery County Board of Commissioners

Ordinance 2022-8

**AN ORDINANCE CREATING THE
LAW ENFORCEMENT TRAINING GRANT FUND**

Whereas, the Indiana Criminal Justice Institute have announced it will distribute funds to County Sheriff's Departments for lost revenues as a result of the elimination of handgun permit fees,

Whereas, the Montgomery County Sheriff's Department is authorized to use the funds distributed by the Indiana Criminal Justice Institute to conduct law enforcement training, including the purchase of supplies and training materials,

Whereas, this fund will be a non-reverting fund.

Whereas, it is in the best interests of the citizens of Montgomery County, Indiana, to create this new fund.

Therefore, it is therefore ordained as follows:

§ 35.____LAW ENFORCEMENT TRAINING GRANT FUND

- (A) *Source of Funds.* The Montgomery County Board of Commissioners hereby establish the Law Enforcement Training Grant Fund. The fund shall consist of distributions received from the Indiana Criminal Justice Institute for lost revenues from the elimination of handgun permit fees.
- (B) *Use of Funds.* All monies in the Montgomery County Law Enforcement Training Grant Fund to conduct law enforcement training, including the purchase of supplies and training materials.
- (C) *Non-Reverting Fund.* "This is a non-reverting fund. No portion of the monies in this Fund will revert to the Montgomery County General Fund."

It is further ordained that this ordinance shall be effective upon adoption.

It is further ordained that all other provisions of the Montgomery County Code of Ordinances, which are not specifically amended by this ordinance shall remain in full force and effect.

Adopted this ____ day of _____, 2022.

Montgomery County Board of Commissioners:

John E. Frey, President

James D. Fulwider, Vice-President

Dan Guard, Member

Attest:

Jennifer Andel, Auditor

Intro: Ord 2022-9 - Creating Economic Development Department

Wednesday, February 23, 2022 10:02 AM

Montgomery County Board of Commissioners

Ordinance 2022-9

Creating Economic Development Department

Whereas, the Board of Commissioners periodically reviews the Montgomery County Code of Ordinances in order to ensure compliance with law and opportunities for operational efficiency; and

Whereas, recent economic development activity in Montgomery County underscores the importance of economic development in the County government's promotion of job creation and retention, capital investment, and other benefits of economic development; and

Whereas, in order to further promote economic development, the Board of Commissioner finds that it is necessary to create an Economic Development Department and to provide for its operation; and

Whereas, because economic development leads to job creation and retention and capital investment in Montgomery County, and because these activities require coordination of improvements to public infrastructure, financing for such improvements, and planning for growth, the Board finds that it is in the best interests of the citizens of Montgomery County to establish an Economic Development Department in order to promote and coordinate these activities.

It is therefore ordained that a new Section, Section 33.18, should be added to the County Code of Ordinances and that this section shall read as follows:

“§ 33.18 ECONOMIC DEVELOPMENT DEPARTMENT

A. Establishment of Department. There is established an Economic Development Department. The Department will promote economic development in Montgomery County, coordinate improvements to public infrastructure needed for such development, and coordinate economic development planning for the County government.

B. Economic Development Authority. The Montgomery County Economic Development Authority will provide strategic oversight for the Department.

(1) **Composition.** The Authority is comprised of the seven (7) members. These members are the three (3) members of the Board of Commissioners, the President of the Montgomery County Council, the Vice President of the Montgomery County Council, the President of the Montgomery County Redevelopment Commission, and the President of the Montgomery County Plan Commission.

(2) **Meetings.** The Authority will meet on a regular basis, not less frequently than every calendar quarter, at a place and time determined by the Authority. The initial meetings of the Authority will occur on the 2nd Tuesday of each month at 11 a.m.

(3) **Officers.** The President of the Board of Commissioners will serve as the Chair of the Authority. The President of the County Council will serve as the Vice Chair of the Authority. The Director will serve as Secretary of the Authority.

(4) **Oath.** Each member of the Authority will take an oath prior to the commencement of the member's service on the Authority.

(5) **Local Economic Development Organization.** The Authority is the Local Economic Development Organization for Montgomery County, and it will work with the Indiana Economic Development Corporation and other State, regional and national economic development organizations and agencies in order to promote economic development in Montgomery County.

C. Director. The Board of Commissioners will appoint a Director of the Department. The Director will report to the County Administrator be the representative of the Authority to all State, regional and national economic development organizations and agencies. The Director will be the primary staff of the Authority, and the Director will supervise all employees of the Department.

D. Staff. With the consent of the Board of Commissioners, the Director may employ persons to assist the Director in the operations of the Department.”

It is further ordained that this ordinance shall become effective upon adoption.

It is further ordained that any provision which is not specifically amended this ordinance shall remain in full force and effect.

Adopted this _____ day of _____, 2022.

Board of Commissioners:

John Frey, President

James D. Fulwider, Vice President

Dan Guard, Member

Attest:

Jennifer Andel, Auditor

Montgomery County Board of Commissioners

Resolution 2022-2

A RESOLUTION APPOINTING EMERGENCY MANAGEMENT DIRECTOR AND APPROVING EMPLOYMENT AGREEMENT

WHEREAS, the Montgomery County Board of Commissioners is empowered to appoint a County Emergency Management Director and approve an employment agreement for the Emergency Management Agency;

AND WHEREAS, the Board finds that with the recommendation of the Montgomery County Emergency Management Advisory Council it should appoint Shari Harrington as Montgomery County Emergency Management Director;

AND WHEREAS, the Board also finds that the employment agreement which is attached to this resolution should be approved.

IT IS, THEREFORE, RESOLVED that Shari Harrington is hereby appointed Montgomery County Emergency Management Director.

IT IS FURTHER RESOLVED that the employment agreement for Harrington, which is attached to this resolution, is hereby approved.

THIS RESOLUTION is hereby adopted on this 28th day of February, 2022.

MONTGOMERY COUNTY BOARD OF
COMMISSIONERS

COMMISSIONERS

John E. Frey, President

1

James D. Fulwider, Vice President

Dan Guard, Member

Attest:

Jennifer Andel, Auditor

**2022 CONTRACT OF EMPLOYMENT
MONTGOMERY COUNTY DIRECTOR OF EMERGENCY AND DISASTER
MANAGEMENT**

THIS AGREEMENT, by and between the Montgomery County Emergency Management Advisory Council, Board of Commissioners of Montgomery County and Shari Harrington (hereinafter referred to as "Harrington"), is to witness that:

WHEREAS, the Director of Emergency and Disaster Management is appointed by the Montgomery County Emergency Management Advisory Council with the consent of the Montgomery County Board of Commissioners;

AND WHEREAS, the Director is a department head position and has the following duties:

1. Direct the organization, administration and operation of the emergency management and disaster program;
2. Be responsible to the President of the Board of County Commissioners;
3. Seek, negotiate and enter into mutual aid agreements, with approval of the County Commissioners;
4. Perform other duties which are either assigned by the Advisory Council or required by law.

AND WHEREAS, the Director serves at the pleasure of the Advisory Council, which may remove the Director at any time, with or without cause, subject to the consent of the County Commissioners;

AND WHEREAS, Shari Harrington has been appointed Director by the Advisory Council, with the consent of the County Commissioners and the Council desires to reappoint Harrington and retain her as Director;

AND WHEREAS, the parties desire to enter into a contract which memorializes their agreement regarding such appointment.

NOW, THEREFORE, IT IS AGREED AS FOLLOWS:

1. TERM: That the Advisory Council hereby agrees to employ Harrington as Director of Emergency And Disaster Management for a term beginning on January 1, 2022 and ending December 31, 2022, subject to the reservation by the Advisory Council, with the consent of the County Commissioners, of the right to terminate the employment of Harrington as provided for in paragraph 4.

2. DUTIES: Harrington shall have all duties provided for by Section 37.18 of the Montgomery County Code, will work at the direction of the President of the Montgomery County Board of Commissioners, and will report to the Advisory Council:

3. SALARY AND BENEFITS: Harrington's salary during the term of this contract shall be total annual compensation in the amount of \$55,258.00.

Harrington shall be paid every two weeks during the term of this agreement. This salary is subject to appropriation by the Montgomery County Council. Harrington will be entitled to all of the benefits available to other employees of the County, except overtime and compensatory time. In addition, she will provided with a motor vehicle for her use in the discharge of her duties.

4. TERMINATION: The parties agree that this contract may be terminated as follows:

- a. Termination By Advisory Council: Harrington is an appointee of the Advisory Council, with the consent of the County Commissioners. As such, she serves at the will of the Advisory Council, subject only to the consent to termination by the

Commissioners. The Advisory Council, with the consent of the Commissioners, may terminate Harrington's employment with or without cause at any time.

b. Termination by Harrington: Harrington may terminate her employment at any time by providing written notice to the Advisory Council.

5. COMPENSATORY TIME & OVERTIME: Harrington is entitled to neither compensatory time ("comp time") nor overtime as provided in the Montgomery County Employee Personnel Manual. Harrington is considered a salaried employee with supervisory duties, and she is entitled to the same benefits provided to other County Employees except compensatory time and overtime.

6. USE OF COUNTY VEHICLE: Because Harrington will be expected to answer calls and perform services at all hours, she shall be entitled to the use of a County motor vehicle to perform these services. This right shall include the right to take the vehicle home in order to facilitate more prompt response time. Harrington shall not use the vehicle for personal use unless such use unavoidable due to the demands of the job. If Harrington is required to use her own vehicle, she is entitled to reimbursement for mileage at the same rate as other County Employees are paid. Harrington shall submit monthly itemized statements and claim vouchers for this additional remuneration.


7. OFFICE HOURS: Harrington shall keep regular business hours as directed by the President of the Montgomery County Commissioners. She will be available for work 24 hours a day, seven days a week, and will work as needed as determined by the President of the Commissioners or as necessitated in order to fulfill her duties and obligations.

8. GENERAL: Harrington shall always maintain the highest standard of professional conduct and practice in the performance of her duties for the County.

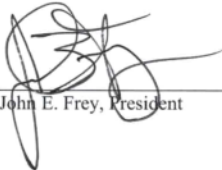
9. CONSTRUCTION: This Contract shall be construed in accordance with and governed by the laws of the State of Indiana.

The parties have executed this Agreement this 26 day of January, 2022.

DIRECTOR OF EMERGENCY
AND DISASTER MANAGEMENT


Sharr Harrington

EMERGENCY MANAGEMENT
ADVISORY COUNCIL
&
MONTGOMERY COUNTY BOARD OF
COMMISSIONERS

By: 
John E. Frey, President

ATTEST:


Secretary