

Memo on Agenda Items

Wednesday, March 02, 2022 1:49 PM

MEMO ON AGENDA ITEMS

MONTGOMERY COUNTY BOARD OF COMMISSIONERS MEETING

MONDAY, MARCH 14, 2022

8 AM

100 E. Main Street - Room 103

Crawfordsville, IN 47933

Commissioners Award

The Commissioners have established a new award to recognize employees that have provided exceptional service to the County. The Commissioners will present their first awards to employees for exceptional service.

Consent Agenda

Approval of Claims: 2-28-22 to 3-14-22

Accounts Payable: \$1,847,699.17

Payroll Claims: \$428,005.63

Approval of Meeting Minutes: February 28, 2022

Proclamation: Week of the Young Child

Proclaims the first full week of April as the "Week of the Young Child".

New Business

Courthouse Planning Study Report - Eric Ratts, DLZ

DLZ will present the results of their planning study to repair the exterior of the Courthouse and remodel the interior of the Courthouse.

Public Defender Contract -

Public Defender Bryan Donaldson is requesting approval of a contract for attorney Robert Poynter to provide public defender services. The contract amount is \$16,000 with no limit on the number of cases.

Compensation Analysis Contract for EMA-HS Director Position

The EMA Advisory Council has recommended that a compensation consultant be hired to conduct a compensation analysis for the EMA-HS Director position.

Staff is recommending that the benefits and compensation advisory firm First Person be hired to conduct the analysis. They have experience with analyzing compensation for County government. The contract amount is \$3,750.

Ordinances

2nd Reading: Ordinance 2022-8: Establishment of 2022 Law Enforcement Training Fund

Ordinance establishes new fund for the Montgomery County Sheriff's Department. The Department is authorized to use the funds distributed by the Indiana Criminal Justice Institute to conduct law enforcement training, including the purchase of supplies and training materials.

Resolutions

Resolution 2022-3: Declaration of Surplus Property

State law requires that the Commissioners declare property as surplus prior to its disposal by a Department. The Resolution declares some property of the Probation Department as surplus property.

AGENDA

Wednesday, March 02, 2022 1:46 PM

AGENDA

MONTGOMERY COUNTY BOARD OF COMMISSIONERS MEETING

MONDAY, MARCH 14, 2022

8 AM

100 E. Main Street - Room 103

Crawfordsville, IN 47933

Call to Order: Board President John E. Frey

Pledge of Allegiance and Prayer

Commissioners Award

Consent Agenda

Approval of Claims: 2-28-22 to 3-14-22

Accounts Payable: \$1,847,699.17

Payroll Claims: \$428,005.63

Approval of Meeting Minutes: February 28, 2022

Proclamation: Week of the Young Child

New Business

DLZ Courthouse Planning Study Report - Eric Ratts

Public Defender Contract

Compensation Analysis Contract for EMA-HS Director Position

Ordinances

2nd Reading: Ordinance 2022-8: Establishment of 2022 Law Enforcement Training Fund

Resolutions

Resolution 2022-3: Declaration of Surplus Property - Probation Department

Other Business

Adjournment

Agenda subject to change

Montgomery County acknowledges its responsibility to comply with the Americans with Disabilities Act of 1990. In order to assist individuals with disabilities who require special services (i.e. sign interpretive services, alternative audio/visual devices, and amanuenses) for participation in or access to County sponsored public programs, services, and/or meetings, the County requests that individuals makes requests for these services forty-eight (48) hours ahead of the scheduled program, service, and/or meeting. To make arrangements, contact ADA/Title VI Coordinator Lori Dossett @ 765-361-2623.

Accounts Payable Claims

Sunday, March 6, 2022 4:37 PM

022922_031422 Docket.xlsx

Invoice	Bank	Check	Payee Name 1	Fund	Fund Desc	Acct	Loc	Loc Desc	Amount	Comment
Jury Duty 2/22/22	001	033490	Abigail L. Moss	1000	General	30047	0201	Superior Court #1	50.66	Served
Jury Duty 2/22/22	001	033490	Abigail L. Moss	1000	General	30046	0201	Superior Court #1	18.28	Served
9810	001	ACH	Access Transcripts LLC	1000	General	30053	0201	Superior Court #1	1824.00	JG APPEAL
10-05-221-072.000-030	001	033532	Adam & Shannon Claycomb	1201	Surplus Tax	50001	0003	County Treasurer	1076.60	SURPLUS
115771	001	ACH	Advanced Correctional Healthca	1000	General	30118	0380	Jail	187.29	JAN22 PHARM DOC
115593	001	ACH	Advanced Correctional Healthca	1000	General	30118	0380	Jail	24747.73	APRIL 2022
115594	001	ACH	Advanced Correctional Healthca	1000	General	30118	0380	Jail	5306.10	POOL/CAN RECON
2021-03LITCS	001	220239	Alamo Clerk Treasurer	7330	LIT Local Income Tax	50000	0002	County Auditor	185.00	LITCS DIST MAR22
2021-03LITPS	001	220239	Alamo Clerk Treasurer	7331	LIT Public Safety Fund	50000	0002	County Auditor	128.25	LITPS DIST MAR22
Jury Duty 2/22/22	001	033491	Alba Lyons	1000	General	30047	0201	Superior Court #1	42.05	Served
Jury Duty 2/22/22	001	033491	Alba Lyons	1000	General	30046	0201	Superior Court #1	11.87	Served
JURY PANEL 03012022	001	033546	Alexander E. Fidler	1000	General	30047	0201	Superior Court #1	27.30	APPEARED
124452	001	ACH	Arab	1176	Motor Vehicle Highway	23523	0529	County Highway	80.00	FEB 2022 SVC
124435	001	ACH	Arab	1000	General	30073	0313	Building Maintenance	60.00	FEB 2022 SVC
124310	001	ACH	Arab	1000	General	30073	0313	Building Maintenance	48.00	JAN 2022 SVC
20-38546 BM	001	ACH	Ascension St Vincent	1170	LIT Public Safety-Cnty Share	33500	0005	County Sheriff	1442.59	HEALTH SCREENS
Jury Duty 2/22/22	001	033492	Ashley J. Wing	1000	General	30047	0201	Superior Court #1	20.33	Appeared
849732398	002	ACH	At & T	1000	General	30036	0068	County Commissioners	11.39	LG THRU 2922
02192022	002	ACH	At & T Mobility	1000	General	30036	9655	Emergency Response	1.25	011222-021122
287254950598X0224	002	ACH	At & T Mobility	1224	Reassessment	32010	0008	County Assessor	140.50	FEB 2022
287283435349X02192022 AIRCARDS	001	033533	At & T Mobility	1170	LIT Public Safety-Cnty Share	30017	0005	County Sheriff	4470.12	FEB 2022
2012022	001	033533	At & T Mobility	1176	Motor Vehicle Highway	30035	0529	County Highway	425.78	FEB 2022
1460571-1	001	ACH	Austin Thomen	1170	LIT Public Safety-Cnty Share	21001	0005	County Sheriff	13.70	PEPES/TRAINING
70510	001	ACH	Axis Forensic Toxicology	1000	General	30210	0007	County Coroner	370.00	DRUG SCREEN
INUS054164	001	ACH	Axon Enterprise Inc	1156	Firearms Training	24202	0005	County Sheriff	237.69	BATT PACKS
68451- IN	001	ACH	B & L Engineering	1176	Motor Vehicle Highway	33450	0529	County Highway	153.75	10GA HRS
M002116	001	ACH	Blue Marketing	1191	Riverboat	31123	0068	County Commissioners	727.08	CNTY LOGO FLAGS
INV1731207	001	ACH	Bob Barker Co Inc.	1000	General	20005	0380	Jail	35.88	TOOTH-BRUSH
INV1731778	001	ACH	Bob Barker Co Inc.	1000	General	20005	0380	Jail	53.92	TOOTH-BRUSH
INV1734499	001	ACH	Bob Barker Co Inc.	1000	General	20007	0380	Jail	33.90	BRIEFS
6353-170832	001	ACH	Braden Mitchell	1170	LIT Public Safety-Cnty Share	30100	0005	County Sheriff	218.26	CAR BATTERY
2021-03LITCS	001	220240	Brown Township Trustee	7330	LIT Local Income Tax	50000	0002	County Auditor	2612.58	LITCS DIST MAR22
JURY PANEL 03012022	001	033547	Bryce Adams	1000	General	30047	0201	Superior Court #1	17.46	APPEARED
JURY PANEL 03012022	001	033547	Bryce Adams	1000	General	30046	0201	Superior Court #1	14.22	APPEARED

022922_031422 Docket.xlsx

Invoice	Bank	Check	Payee Name 1	Fund	Fund Desc	Acct	Loc	Loc Desc	Amount	Comment
95382	001	ACH	Butler Fairman & Seulert	1138	Cumulative Capital Development	30192	0068	County Commissioners	21519.06	OCT-DEC 2021
103922	001	ACH	Car Brite Distributors	1000	General	20001	0380	Jail	211.30	CHERRY BOMB
121993	001	ACH	Cardinal Leasing Inc	4900	Central Comms Center	30050	0303	Communications Dept (Rad	104.50	MAR 2022
2906935637	001	ACH	Cargill Inc	1176	Motor Vehicle Highway	21532	0529	County Highway	18692.35	SALT/ICE CONTROL
2906940728	001	ACH	Cargill Inc	1176	Motor Vehicle Highway	21532	0529	County Highway	6852.46	SALT/ICE CONTROL
2906945445	001	ACH	Cargill Inc	1176	Motor Vehicle Highway	21532	0529	County Highway	2519.34	SALT/ICE CONTROL
JURY PANEL 03012022	001	033548	Cassidy M. Crull	1000	General	30047	0201	Superior Court #1	22.38	APPEARED
JURY PANEL 03012022	001	033548	Cassidy M. Crull	1000	General	30046	0201	Superior Court #1	8.32	APPEARED
8671 3	001	033534	CenterPoint Energy	1176	Motor Vehicle Highway	30035	0529	County Highway	433.50	FEB 2022
7406 5	001	033534	CenterPoint Energy	1000	General	30035	0068	County Commissioners	1608.93	FEB 2022
6129 5	001	033534	CenterPoint Energy	1000	General	30035	0068	County Commissioners	621.40	FEB 2022
3209 4	001	033534	CenterPoint Energy	1000	General	30035	0068	County Commissioners	93.64	FEB 2022
1955 9	001	033534	CenterPoint Energy	1000	General	30035	0068	County Commissioners	139.11	FEB 2022
1321728654-22216143	001	ACH	Central Customer Charges	1000	General	20004	0380	Jail	393.76	BREAD/MILK
0122729241-22226273	001	ACH	Central Customer Charges	1000	General	20004	0380	Jail	268.60	BREAD/MILK
0122730113-22239866	001	ACH	Central Customer Charges	1000	General	20004	0380	Jail	345.47	BREAD/MILK
0122730854-22252458	001	ACH	Central Customer Charges	1000	General	20004	0380	Jail	311.56	BREAD/MILK
2350187	001	ACH	Ceres Solutions Cooperative	1176	Motor Vehicle Highway	23000	0529	County Highway	14063.24	FUEL
1803934	001	ACH	Ceres Solutions Cooperative	1173	MVH Restricted Fund	23002	0529	County Highway	2318.75	FUEL
2036400	001	ACH	Ceres Solutions Cooperative	1173	MVH Restricted Fund	23002	0529	County Highway	1909.31	JAN 2022 FUEL
2350187	001	ACH	Ceres Solutions Cooperative	1173	MVH Restricted Fund	23002	0529	County Highway	11699.26	FUEL
1803766	001	ACH	Ceres Solutions Cooperative	1176	Motor Vehicle Highway	21000	0529	County Highway	479.60	FUEL
109232	001	ACH	Ceres Solutions Cooperative	1000	General	21000	0313	Building Maintenance	73.16	FUEL
7620	001	ACH	Ceres Solutions Cooperative	1000	General	21000	0313	Building Maintenance	136.17	FUEL
Jury Duty 2/22/22	001	033493	Chad A. Rice	1000	General	30047	0201	Superior Court #1	15.82	Appeared
JURY PANEL 03012022	001	033549	Chad L. Dorsey	1000	General	30047	0201	Superior Court #1	19.10	APPEARED
JURY PANEL 03012022	001	033550	Channa M. Stacey	1000	General	30047	0201	Superior Court #1	16.64	APPEARED
Jury Duty 2/22/22	001	033494	Cheryl L. Baker	1000	General	30047	0201	Superior Court #1	20.74	Appeared
JURY PANEL 03012022	001	033551	Christopher A. Wallace	1000	General	30047	0201	Superior Court #1	81.64	SERVED
JURY PANEL 03012022	001	033551	Christopher A. Wallace	1000	General	30046	0201	Superior Court #1	12.45	SERVED
24677	001	ACH	Christopher B Burke Engineerin	8125	2021 M-HMP Grant 97.047	30050	9655	Emergency Response	1070.13	JAN 2022
4110571876	001	220263	Cintas Corporation Loc #366	1176	Motor Vehicle Highway	13002	0529	County Highway	252.03	UNIFORMS
4111243294	001	220263	Cintas Corporation Loc #366	1176	Motor Vehicle Highway	13002	0529	County Highway	218.88	UNIFORMS
4110572117	001	220263	Cintas Corporation Loc #366	1176	Motor Vehicle Highway	20001	0529	County Highway	92.40	CLEANING

022922_031422 Docket.xlsx

Invoice	Bank	Check	Payee Name 1	Fund	Fund Desc	Acct	Loc	Loc Desc	Amount	Comment
0365412436	001	ACH	Ciox Health	1000	General	24201	0009	Prosecuting Attorney	75.75	MED RECORDS BE
2021-03LITCS	001	220241	Clark Township Trustee	7330	LT Local Income Tax	50000	0002	County Auditor	1142.67	LITCS DIST MAR22
59561	001	ACH	Clark Truck Equipment Co Inc	1176	Motor Vehicle Highway	23523	0529	County Highway	50.00	RVC CABLE
59585	001	ACH	Clark Truck Equipment Co Inc	1176	Motor Vehicle Highway	23523	0529	County Highway	31.00	MUD FLAP/BOLTS
59617	001	ACH	Clark Truck Equipment Co Inc	1176	Motor Vehicle Highway	23523	0529	County Highway	192.20	ORG MARKERS
2021-03LITCS	001	033528	Coal Creek Township Trustee	7330	LT Local Income Tax	50000	0002	County Auditor	2202.75	LITCS DIST MAR22
5009921746.001	001	ACH	Connor Co.	1000	General	24202	0380	Jail	37.33	CANISTER
FS-2595-0022822	001	ACH	Cordant Health Solutions	2100	Supplemental Adult Prob Svcs	30152	0235	Probation	4334.50	CHEM TESTING
814093	001	ACH	Crawfordsville Automotive Inc	1176	Motor Vehicle Highway	23523	0529	County Highway	3.62	GARAGE CUPPLIES
814115	001	ACH	Crawfordsville Automotive Inc	1176	Motor Vehicle Highway	23523	0529	County Highway	35.77	CONNECT/TOOL
814140	001	ACH	Crawfordsville Automotive Inc	1176	Motor Vehicle Highway	23523	0529	County Highway	52.89	WRK LAMP
814165	001	ACH	Crawfordsville Automotive Inc	1176	Motor Vehicle Highway	23523	0529	County Highway	146.32	ICE BLADE
814172	001	ACH	Crawfordsville Automotive Inc	1176	Motor Vehicle Highway	23523	0529	County Highway	45.98	STONE SET/BREAKE
814389	001	ACH	Crawfordsville Automotive Inc	1176	Motor Vehicle Highway	23523	0529	County Highway	133.03	ICE BLADES
814393	001	ACH	Crawfordsville Automotive Inc	1176	Motor Vehicle Highway	23523	0529	County Highway	53.31	AIR FILTER
814419	001	ACH	Crawfordsville Automotive Inc	1176	Motor Vehicle Highway	23523	0529	County Highway	215.42	BATTERIES
814463	001	ACH	Crawfordsville Automotive Inc	1176	Motor Vehicle Highway	23523	0529	County Highway	146.32	ICE BLADE
814486	001	ACH	Crawfordsville Automotive Inc	1176	Motor Vehicle Highway	23523	0529	County Highway	133.18	V BELT
814499	001	ACH	Crawfordsville Automotive Inc	1176	Motor Vehicle Highway	23523	0529	County Highway	50.12	DRAIN VALVE
814633	001	ACH	Crawfordsville Automotive Inc	1176	Motor Vehicle Highway	23523	0529	County Highway	24.18	ADPT/NOZZLE
814719	001	ACH	Crawfordsville Automotive Inc	1176	Motor Vehicle Highway	23523	0529	County Highway	87.62	SOLENOID
814805	001	ACH	Crawfordsville Automotive Inc	1176	Motor Vehicle Highway	23523	0529	County Highway	6.18	TH-READ ROD
814854	001	ACH	Crawfordsville Automotive Inc	1176	Motor Vehicle Highway	23523	0529	County Highway	138.99	AIR FILTER
814985	001	ACH	Crawfordsville Automotive Inc	1176	Motor Vehicle Highway	23523	0529	County Highway	22.76	STEERING FLUID
814996	001	ACH	Crawfordsville Automotive Inc	1176	Motor Vehicle Highway	23523	0529	County Highway	360.76	FILTERS/GRD WHL
815138	001	ACH	Crawfordsville Automotive Inc	1176	Motor Vehicle Highway	23523	0529	County Highway	81.45	WELDING WHEEL
815207	001	ACH	Crawfordsville Automotive Inc	1176	Motor Vehicle Highway	23523	0529	County Highway	858.35	FILTERS
815209	001	ACH	Crawfordsville Automotive Inc	1176	Motor Vehicle Highway	23523	0529	County Highway	383.63	AIR FILTERS
815371	001	ACH	Crawfordsville Automotive Inc	1176	Motor Vehicle Highway	23523	0529	County Highway	18.25	SOCKET
815464 WITH CREDIT MEMO 815429 \$27.00	001	ACH	Crawfordsville Automotive Inc	1176	Motor Vehicle Highway	23523	0529	County Highway	30.95	REGULATOR
2021-03LITCS	001	220242	Crawfordsville Clk Treasurer	7330	LT Local Income Tax	50000	0002	County Auditor	260939.33	LITCS DIST MAR22
2021-03LITPS	001	220242	Crawfordsville Clk Treasurer	7331	Lit Public Safety Fund	50000	0002	County Auditor	180946.67	LITPS DIST MAR22
95639	001	ACH	Crawfordsville Paper	1176	Motor Vehicle Highway	23523	0529	County Highway	121.23	PAPER TOWELS
95601	001	ACH	Crawfordsville Paper	1000	General	21850	0313	Building Maintenance	448.24	T PAPER-TRASH BG

022922_031422 Docket.xlsx

Invoice	Bank	Check	Payee Name 1	Fund	Fund Desc	Acct	Loc	Loc Desc	Amount	Comment
95438	001	ACH	Crawfordsville Paper	1000	General	21850	0313	Building Maintenance	67.92	CLEAN SUPPLIES
2021-03LITCS	001	220243	Crawfordsville Public Library	7330	LIT Local Income Tax	50000	0002	County Auditor	50254.08	LITCS DIST MAR22
412453000222	001	033535	Crawfordsville Utilities	1000	General	30035	0068	County Commissioners	1536.49	FEB 2022
412433000222	001	033535	Crawfordsville Utilities	1176	Motor Vehicle Highway	30035	0529	County Highway	43.21	FEB 2022
Jury Duty 2/22/22	001	033495	Cynthia K. Edwards	1000	General	30047	0201	Superior Court #1	15.00	Appeared
2021-03LITCS	001	220244	Darlington Clerk Treasurer	7330	LIT Local Income Tax	50000	0002	County Auditor	3801.92	LITCS DIST MAR22
2021-03LITPS	001	220244	Darlington Clerk Treasurer	7331	LIT Public Safety Fund	50000	0002	County Auditor	2636.42	LITPS DIST MAR22
2021-03LITCS	001	033529	Darlington Public Library	7330	LIT Local Income Tax	50000	0002	County Auditor	2087.42	LITCS DIST MAR22
MILEAGE	001	ACH	David W Hampton	1000	General	30005	0312	Building Dept (Permits)	185.20	012622-021522
MILEAGE	001	ACH	David W Hampton	1000	General	30005	0312	Building Dept (Permits)	265.20	121621-010522
MILEAGE	001	ACH	David W Hampton	1000	General	30005	0312	Building Dept (Permits)	214.00	0106222-012522
Jury Duty 2/22/22	001	033496	Deanna K. Jones	1000	General	30047	0201	Superior Court #1	48.20	Served
Jury Duty 2/22/22	001	033496	Deanna K. Jones	1000	General	30046	0201	Superior Court #1	7.48	Served
Jury Duty 2/22/22	001	033497	Deborah L. Howard	1000	General	30047	0201	Superior Court #1	15.82	Appeared
JURY PANEL 03012022	001	033552	Dennis A Priest	1000	General	30047	0201	Superior Court #1	15.82	APPEARED
Jury Duty 2/22/22	001	033498	Diana K. Wiles	1000	General	30047	0201	Superior Court #1	17.05	Appeared
827624 PROJECT 216106290	001	220264	DLZ	1138	Cumulative Capital Development	30650	0068	County Commissioners	870.00	011522-020422
JURY PANEL 03012022	001	033553	Donald E. Braun	1000	General	30047	0201	Superior Court #1	96.40	SERVED
JURY PANEL 03012022	001	033553	Donald E. Braun	1000	General	30046	0201	Superior Court #1	9.62	SERVED
6072421	001	033536	DTN, LLC	1176	Motor Vehicle Highway	30194	0529	County Highway	3094.20	JAN 2022
01272022-02252022	001	ACH	Duke Energy	1176	Motor Vehicle Highway	30035	0529	County Highway	13.78	FEB 2022
JURY PANEL 03012022	001	033554	Dylan J. Nevitt	1000	General	30047	0201	Superior Court #1	17.46	APPEARED
USA427035-AUD	001	ACH	Eagleview % Pictometry	1181	Plat Book	30050	0002	County Auditor	7701.64	1/7 PICTO CHG
JURY PANEL 03012022	001	033555	Eden S. Smith	1000	General	30047	0201	Superior Court #1	25.66	APPEARED
2353 GOVERNMENT CENTER	001	ACH	Edge Information Technologies	1138	Cumulative Capital Development	30128	0068	County Commissioners	15896.60	CISCO NETWORK
111	001	ACH	Edge Information Technologies	1000	General	30050	9616	IT	15200.00	JAN 2022
Jury Duty 2/22/22	001	033499	Elizabeth A. Cuadrado	1000	General	30047	0201	Superior Court #1	40.41	Served
Jury Duty 2/22/22	001	033499	Elizabeth A. Cuadrado	1000	General	30046	0201	Superior Court #1	15.07	Served
Jury Duty 2/22/22	001	033500	Elizabeth J. Hickox	1000	General	30047	0201	Superior Court #1	33.04	Appeared
510548	001	220265	Enterprise Fleet Management	1000	General	32112	0068	County Commissioners	31885.58	2022 LEASE
86427	001	ACH	Etter Ford-Mercury	1170	LIT Public Safety-Cnty Share	30100	0005	County Sheriff	502.72	TUNEUP HECH
86396	001	ACH	Etter Ford-Mercury	1170	LIT Public Safety-Cnty Share	30100	0005	County Sheriff	146.20	OIL CHANGE
0000090	001	ACH	Final Touch Multi Service	1000	General	30210	0007	County Coroner	1500.00	AUTOPSY
2021-03LITCS	001	220245	Franklin Township Trustee	7330	LIT Local Income Tax	50000	0002	County Auditor	1298.58	LITCS DIST MAR22

022922_031422 Docket.xlsx

Invoice	Bank	Check	Payee Name 1	Fund	Fund Desc	Acct	Loc	Loc Desc	Amount	Comment
JURY PANEL 03012022	001	033556	Gary K. Christensen	1000	General	30047	0201	Superior Court #1	16.23	APPEARED
Jury Duty 2/22/22	001	033501	Gavyn G. Warren	1000	General	30047	0201	Superior Court #1	21.56	Appeared
JURY PANEL 03012022	001	033557	Ginger L. Collins	1000	General	30047	0201	Superior Court #1	16.64	APPEARED
	001	033526	Globe Life Attn: LN Worksite	5100	0300 Payroll Clearing	00026	0000	No Department	2712.16	W/E 03042022
216746328	001	ACH	Gordon Food Service	1000	General	20004	0380	Jail	4733.73	MEALS
216746346	001	ACH	Gordon Food Service	1000	General	20004	0380	Jail	141.27	SUPPLIES
216906856	001	ACH	Gordon Food Service	1000	General	20004	0380	Jail	48.80	CUPS
216906850	001	ACH	Gordon Food Service	1000	General	20004	0380	Jail	5278.26	MEALS
21677521	001	ACH	Gordon Food Service	1000	General	20004	0380	Jail	40.92	SCALLION
117918	001	ACH	Haley's Lock Safe & Key	1000	General	24202	0380	Jail	86.00	TRANSPORT KEYS
31841	001	ACH	Hay-Bush Mechanical	1000	General	30500	0380	Jail	1112.18	HVS REPLACEMENT
31842	001	ACH	Hay-Bush Mechanical	1000	General	30500	0380	Jail	833.13	FREEZER HEAD
102730	001	ACH	Holladay Property Services Inc	1191	Riverboat	31123	0068	County Commissioners	4000.00	01/15-02/14/22
524683	001	ACH	Home Depot Credit Services	1000	General	24202	0380	Jail	239.96	PAINT SUPPLIES
4255092	001	ACH	Home Depot Credit Services	1000	General	24202	0380	Jail	89.84	DOLLY
8621734	001	ACH	Home Depot Credit Services	1000	General	24202	0380	Jail	66.27	AMMONIA
541785 FINAL PAYMENT	001	ACH	Huntington Public Capital Corp	1138	Cumulative Capital Development	30650	0068	County Commissioners	20869.66	FEB-MAR 2022
2020-259-A-0000001	001	ACH	HWC Engineering	1173	MVH Restricted Fund	30194	0529	County Highway	1003.80	DEC 2021 SVC
2020-259-A-0000002	001	ACH	HWC Engineering	1173	MVH Restricted Fund	30194	0529	County Highway	3011.40	JAN 2022 SVC
7024788	001	ACH	IAEI	1000	General	32100	0312	Building Dept (Permits)	120.00	DUES
134756	001	ACH	ICMA Membership Renewal	1000	General	32100	0068	County Commissioners	775.20	2022 RENEWAL
69609	001	ACH	Ind Dept Of Transportation	1169	Local Road And Street	44235	0529	County Highway	16787.62	BITUMINOUS
01222022-02172022 Acct 1010-210006232619	001	033537	Indiana American Water Co.	1000	General	30035	0068	County Commissioners	84.14	FEB 2022
01222022-02182022 Acct 1010-210007045559	001	033537	Indiana American Water Co.	1000	General	30035	0068	County Commissioners	59.08	FEB 2022
01222022-02172022 Acct 1010-210006105236	001	033537	Indiana American Water Co.	1000	General	30035	0068	County Commissioners	187.97	FEB 2022
14847940	001	ACH	Indiana Paging Network	1000	General	30036	0068	County Commissioners	24.06	MARCH 22
0A8-338698-01-EB-5 Policy 791000649	001	033538	INTACT Insurance	1000	General	30087	0068	County Commissioners	752.64	INSURANCE
0A8-338698-01-EB-5 Policy 791000649	001	033538	INTACT Insurance	1000	General	30087	0068	County Commissioners	4247.39	INSURANCE
0177	001	ACH	Internal Revenue Service	5100	0300 Payroll Clearing	00012	0000	No Department	13.17	2021
05-27-600-004.001-036	001	033539	James & Natalie Cochran	1201	Surplus Tax	50001	0003	County Treasurer	318.47	FALL 21 SURPLUS
Jury Duty 2/22/22	001	033502	James E. Wilbur	1000	General	30047	0201	Superior Court #1	23.20	Appeared
Jury Duty 2/22/22	001	033503	James R Hanks	1000	General	30047	0201	Superior Court #1	24.84	Appeared
JURY PANEL 03012022	001	033558	Janet Bechtel	1000	General	30047	0201	Superior Court #1	93.12	SERVED
JURY PANEL 03012022	001	033558	Janet Bechtel	1000	General	30046	0201	Superior Court #1	13.69	SERVED

022922_031422 Docket.xlsx

Invoice	Bank	Check	Payee Name 1	Fund	Fund Desc	Acct	Loc	Loc Desc	Amount	Comment
JURY PANEL 03012022	001	033559	Jason M. Gray	1000	General	30047	0201	Superior Court #1	81.64	SERVED
JURY PANEL 03012022	001	033559	Jason M. Gray	1000	General	30046	0201	Superior Court #1	20.00	SERVED
JURY PANEL 03012022	001	033560	Jeffrey W. Powers	1000	General	30047	0201	Superior Court #1	19.10	APPEARED
JURY PANEL 03012022	001	033560	Jeffrey W. Powers	1000	General	30046	0201	Superior Court #1	9.19	APPEARED
JURY PANEL 03012022	001	033561	Jenna M. Livingston	1000	General	30047	0201	Superior Court #1	27.30	APPEARED
JURY PANEL 03012022	001	033561	Jenna M. Livingston	1000	General	30046	0201	Superior Court #1	13.85	APPEARED
JURY PANEL 03012022	001	033562	Jesse A. Kellie Jr	1000	General	30047	0201	Superior Court #1	27.30	APPEARED
JURY PANEL 03012022	001	033563	John A. Douglas	1000	General	30047	0201	Superior Court #1	16.23	APPEARED
JUVENILE DETENTION 26 DAYS	001	033540	Johnson Co Treasurer	1000	General	30021	0068	County Commissioners	3640.00	01/06-01/31/2022
JURY PANEL 03012022	001	033564	Jordan Surface	1000	General	30047	0201	Superior Court #1	23.20	APPEARED
JURY PANEL 03012022	001	033564	Jordan Surface	1000	General	30046	0201	Superior Court #1	15.51	APPEARED
JURY PANEL 03012022	001	033565	Joseph W. Mccutchan	1000	General	30047	0201	Superior Court #1	25.66	APPEARED
JURY PANEL 03012022	001	033566	Judy D. Price	1000	General	30047	0201	Superior Court #1	16.64	APPEARED
JURY PANEL 03012022	001	033567	Julie A. Pine	1000	General	30047	0201	Superior Court #1	15.41	APPEARED
JURY PANEL 03012022	001	033568	Justin K. Pruett	1000	General	30047	0201	Superior Court #1	24.84	APPEARED
JURY PANEL 03012022	001	033568	Justin K. Pruett	1000	General	30046	0201	Superior Court #1	11.76	APPEARED
Jury Duty 2/22/22	001	033504	Kai A. Warren	1000	General	30047	0201	Superior Court #1	22.38	Appeared
02162022	001	ACH	Katherine L. Brown	1000	General	30083	0380	Jail	80.00	FEB 22 HAIRCUTS
JURY PANEL 03012022	001	033569	Keith D. Johnson	1000	General	30047	0201	Superior Court #1	23.20	APPEARED
JURY PANEL 03012022	001	033569	Keith D. Johnson	1000	General	30046	0201	Superior Court #1	19.46	APPEARED
Jury Duty 2/22/22	001	033505	Kelly D. Bielecki	1000	General	30047	0201	Superior Court #1	51.48	Served
Jury Duty 2/22/22	001	033505	Kelly D. Bielecki	1000	General	30046	0201	Superior Court #1	14.05	Served
JURY PANEL 03012022	001	033570	Kent A. Cavanaugh II	1000	General	30046	0201	Superior Court #1	20.00	APPEARED
JURY PANEL 03012022	001	033570	Kent A. Cavanaugh II	1000	General	30047	0201	Superior Court #1	17.05	APPEARED
S111723557.001	001	ACH	Kirby Risk Corporation	1000	General	24202	0380	Jail	67.07	LIGHTING
S111872904.001	001	ACH	Kirby Risk Corporation	1000	General	24202	0380	Jail	72.71	LIGHTING
Jury Duty 2/22/22	001	033506	Kristi Braziel	1000	General	30047	0201	Superior Court #1	21.15	Appeared
90791	001	ACH	Kristopher Dulin	1176	Motor Vehicle Highway	30193	0529	County Highway	120.00	DRUG SCREEN
Jury Duty 2/22/22	001	033507	Kyle S. Emberton	1000	General	30047	0201	Superior Court #1	19.92	Appeared
2021-03LITCS	001	220246	Ladoga Clerk Treasurer	7330	LIT Local Income Tax	50000	0002	County Auditor	5517.33	LITCS DIST MAR22
2021-03LITPS	001	220246	Ladoga Clerk Treasurer	7331	LIT Public Safety Fund	50000	0002	County Auditor	3826.00	LITPS DIST MAR22
2021-03LITCS	001	220247	Ladoga Public Library	7330	LIT Local Income Tax	50000	0002	County Auditor	1636.50	LITCS DIST MAR22
JURY PANEL 03012022	001	033571	Larry Anderson	1000	General	30047	0201	Superior Court #1	84.10	SERVED
JURY PANEL 03012022	001	033571	Larry Anderson	1000	General	30046	0201	Superior Court #1	13.47	SERVED

022922_031422 Docket.xlsx

Invoice	Bank	Check	Payee Name 1	Fund	Fund Desc	Acct	Loc	Loc Desc	Amount	Comment
PUBLIC DEFENDER CONTRACT	001	033541	Law Office of Alex Robbins LLC	1000	General	30065	0271	Public Defender	1333.33	FEB 2022
9309244002	001	ACH	Lawson Products Inc.	1176	Motor Vehicle Highway	23523	0529	County Highway	446.56	NUTS/WASHERS
2021-03LITCS	001	220248	Linden Public Library	7330	LIT Local Income Tax	50000	0002	County Auditor	2531.67	LITCS DIST MAR22
Jury Duty 2/22/22	001	033508	Lorraine Hitz-bradley	1000	General	30047	0201	Superior Court #1	15.82	Appeared
JURY PANEL 03012022	001	033572	Lucas Covault	1000	General	30047	0201	Superior Court #1	17.05	APPEARED
JURY PANEL 03012022	001	033572	Lucas Covault	1000	General	30046	0201	Superior Court #1	20.00	APPEARED
38658	001	ACH	Luna Language Services	1000	General	30051	0232	Circuit Court	180.00	01072022 FCC
594051303	001	ACH	M.A.I.L.L., Inc.	1000	General	30034	0068	County Commissioners	212.39	NEWSLETTERS
594051311	001	ACH	M.A.I.L.L., Inc.	1000	General	30034	0068	County Commissioners	50.00	PARCEL PACKS
5940012822	001	ACH	M.A.I.L.L., Inc.	1000	General	30034	0068	County Commissioners	3737.10	JAN MAILING
5940022522	001	ACH	M.A.I.L.L., Inc.	1000	General	30034	0068	County Commissioners	5134.31	FEB 2022
2021-03LITCS	001	220249	Madison Township Trustee	7330	LIT Local Income Tax	50000	0002	County Auditor	5147.67	LITCS DIST MAR22
JURY PANEL 03012022	001	033573	Marilyn R. Smith	1000	General	30047	0201	Superior Court #1	15.82	APPEARED
Jury Duty 2/22/22	001	033509	Marjorie R. Barnes	1000	General	30047	0201	Superior Court #1	15.41	Appeared
Jury Duty 2/22/22	001	033510	Mark W. Kussmaul	1000	General	30047	0201	Superior Court #1	16.64	Appeared
JURY PANEL 03012022	001	033574	Marvin W. Barnes	1000	General	30047	0201	Superior Court #1	24.84	APPEARED
JURY PANEL 03012022	001	033574	Marvin W. Barnes	1000	General	30046	0201	Superior Court #1	18.16	APPEARED
JURY PANEL 03012022	001	033575	Melody J. Holladay	1000	General	30047	0201	Superior Court #1	21.56	APPEARED
ACCT 1696226	002	ACH	Metro Fibernet Llc	1000	General	30036	0068	County Commissioners	94.71	MARCH 2022
ACCT 1322542	002	ACH	Metro Fibernet Llc	1000	General	30036	0068	County Commissioners	2133.70	MARCH 2022
13271170222	002	ACH	Metro Fibernet Llc	1000	General	30036	9655	Emergency Response	609.91	021422-031322
1329627022022	002	ACH	Metro Fibernet Llc	1000	General	30035	0750	Soil Conservation (Soil & Wate	89.95	FEB 2022
PUBLIC DEFENDER CONTRACT	001	220266	Meyer Law Office	1000	General	30065	0271	Public Defender	1500.00	FEB 2022
JURY PANEL 03012022	001	033576	Micci Anglin	1000	General	30046	0201	Superior Court #1	9.82	SERVED
JURY PANEL 03012022	001	033576	Micci Anglin	1000	General	30047	0201	Superior Court #1	96.40	SERVED
2021-03LITCS	001	033530	Mont Cnty Treasurer	7330	LIT Local Income Tax	50000	0002	County Auditor	326622.40	LITCS DIST MAR22
2021-03LITPS	001	033530	Mont Cnty Treasurer	7331	Lit Public Safety Fund	50000	0002	County Auditor	226494.25	LITPS DIST MAR22
03012022	001	ACH	Mont Cnty Treasurer	1000	General	30003	0001	Clerk of Circuit	2395.00	FEB PAPERS SVD
03012022 REIMB GRP INS HO	001	ACH	Montgomery Co Commissioners	9178	FY22 DOC PROBATION GRANT	12050	0235	Probation	725.86	FEB 2022
03012022 REIMB GRP INS FM	001	ACH	Montgomery Co Commissioners	9178	FY22 DOC PROBATION GRANT	12050	0235	Probation	725.86	FEB 2022
03012022 REIMB FICA HO	001	ACH	Montgomery Co Commissioners	9178	FY22 DOC PROBATION GRANT	12005	0235	Probation	344.33	FEB 2022
03012022 REIMB FICA HO	001	ACH	Montgomery Co Commissioners	9178	FY22 DOC PROBATION GRANT	12005	0235	Probation	304.67	FEB 2022
03012022 REIMB INPRS HO	001	ACH	Montgomery Co Commissioners	9178	FY22 DOC PROBATION GRANT	12005	0235	Probation	504.12	FEB 2022
03012022 REIMB INPRS FM	001	ACH	Montgomery Co Commissioners	9178	FY22 DOC PROBATION GRANT	12005	0235	Probation	446.05	FEB 2022

022922_031422 Docket.xlsx

Invoice	Bank	Check	Payee Name 1	Fund	Fund Desc	Acct	Loc	Loc Desc	Amount	Comment
03012022 REIMB GRP INS EC	001	ACH	Montgomery Co Commissioners	9177	FY22 DOC DRUG CT GRANT	12050	0235	Probation	725.86	FEB 2022
03012022 REIMB FICA EC	001	ACH	Montgomery Co Commissioners	9177	FY22 DOC DRUG CT GRANT	12005	0235	Probation	329.33	FEB 2022
03012022 REIMB INPRS EC	001	ACH	Montgomery Co Commissioners	9177	FY22 DOC DRUG CT GRANT	12005	0235	Probation	482.16	FEB 2022
03012022 REIMB GRP INS JY	001	ACH	Montgomery Co Commissioners	9144	FY22 Veterans Treatment Ct Grt	12050	0235	Probation	725.86	FEB 2022
03012022 REIMB FICA JY	001	ACH	Montgomery Co Commissioners	9144	FY22 Veterans Treatment Ct Grt	12005	0235	Probation	428.60	FEB 2022
03012022 REIMB INPRS JY	001	ACH	Montgomery Co Commissioners	9144	FY22 Veterans Treatment Ct Grt	12005	0235	Probation	627.48	FEB 2022
03012022 REIMB FICA RO	001	ACH	Montgomery Co Commissioners	9106	FY22 Family Recovery Ct Grt	12005	0235	Probation	405.28	FEB 2022
03012022 REIMB INPRS RO	001	ACH	Montgomery Co Commissioners	9106	FY22 Family Recovery Ct Grt	12005	0235	Probation	593.26	FEB 2022
03012022 REIMB GRP INS RO	001	ACH	Montgomery Co Commissioners	9106	FY22 Family Recovery Ct Grt	12050	0235	Probation	725.86	FEB 2022
02282022	001	ACH	Montgomery County Probation	9156	DFMCC Drug Free LCC 21/22	30179	0235	Probation	60.00	DRUG TEST
02282022	001	ACH	Montgomery County Probation	9156	DFMCC Drug Free LCC 21/22	30179	0235	Probation	45.00	DRUG TEST
02282022	001	ACH	Montgomery County Probation	9156	DFMCC Drug Free LCC 21/22	30179	0235	Probation	60.00	DRUG TEST
02282022	001	ACH	Montgomery County Probation	9156	DFMCC Drug Free LCC 21/22	30179	0235	Probation	75.00	DRUG TEST
02252022	001	ACH	MRNISO	2100	Supplemental Adult Prob Svcs	32100	0235	Probation	40.00	SPR CONF 2022 PG
02252022	001	ACH	MRNISO	2100	Supplemental Adult Prob Svcs	32100	0235	Probation	40.00	SPR CONF 2022 GK
JURY PANEL 03012022	001	033577	Nathan K. Clark	1000	General	30047	0201	Superior Court #1	18.28	APPEARED
JURY PANEL 03012022	001	033577	Nathan K. Clark	1000	General	30046	0201	Superior Court #1	20.00	APPEARED
JURY PANEL 03012022	001	033578	Nathaniel E. Bowman	1000	General	30047	0201	Superior Court #1	16.23	APPEARED
JURY PANEL 03012022	001	033578	Nathaniel E. Bowman	1000	General	30046	0201	Superior Court #1	16.00	APPEARED
2021-03LITCS	001	220250	New Richmond Clk Treasurer	7330	LIT Local Income Tax	50000	0002	County Auditor	2352.00	LITCS DIST MAR22
2021-03LITPS	001	220250	New Richmond Clk Treasurer	7331	LIT Public Safety Fund	50000	0002	County Auditor	1631.00	LITPS DIST MAR22
2021-03LITCS	001	220251	New Ross Clk Treasurer	7330	LIT Local Income Tax	50000	0002	County Auditor	1069.42	LITCS DIST MAR22
2021-03LITPS	001	220251	New Ross Clk Treasurer	7331	LIT Public Safety Fund	50000	0002	County Auditor	741.58	LITPS DIST MAR22
15917 QTLY RENTAL	001	ACH	Office H2O LLC	1000	General	30035	0068	County Commissioners	267.00	PD OFFICE
JURY PANEL 03012022	001	033579	Pamela J. Myers	1000	General	30047	0201	Superior Court #1	15.41	APPEARED
Jury Duty 2/22/22	001	033511	Pamela S. Collins	1000	General	30047	0201	Superior Court #1	54.76	Served
Jury Duty 2/22/22	001	033511	Pamela S. Collins	1000	General	30046	0201	Superior Court #1	13.80	Served
175033	001	ACH	Pearson Ford	1170	LIT Public Safety-Cnty Share	30100	0005	County Sheriff	405.40	KIT/ROTOR
0015149-IN	001	ACH	PH&S Products Llc	1170	LIT Public Safety-Cnty Share	20400	0005	County Sheriff	615.51	NITRILE GLVS
000954.0001	001	ACH	Plews Shadley Rancher & Braun L	1170	LIT Public Safety-Cnty Share	30079	0005	County Sheriff	5000.00	REPLEN RETAINER
820072161 WITH CREDITS 140.00 & 22.50	001	ACH	Pomp's Tire Service Inc.	1176	Motor Vehicle Highway	23522	0529	County Highway	27.26	TIRE
102352 GRP	001	033527	Protective Life Insurance	5100	0300 Payroll Clearing	00020	0000	No Department	19.93	W/E 03042022
881502	001	ACH	Pure Water Partners	1176	Motor Vehicle Highway	23523	0529	County Highway	285.00	FEB 2022
888003	001	ACH	Pure Water Partners	1000	General	30035	0068	County Commissioners	855.00	MAR 2022

022922_031422 Docket.xlsx

Invoice	Bank	Check	Payee Name 1	Fund	Fund Desc	Acct	Loc	Loc Desc	Amount	Comment
3035	001	ACH	PUTNAM COUNTY AGGREGATES INC	1173	MVH Restricted Fund	20015	0529	County Highway	926.14	#5 STONE
3127	001	ACH	PUTNAM COUNTY AGGREGATES INC	1173	MVH Restricted Fund	20015	0529	County Highway	1458.88	#5 STONE
23263895	001	ACH	Quill Corp	1000	General	24201	0003	County Treasurer	237.55	OFFICE SUPPLIES
23126699	001	ACH	Quill Corp	1224	Reassessment	24201	0008	County Assessor	47.20	PAPER/POST ITS
23182752	001	ACH	Quill Corp	1224	Reassessment	24201	0008	County Assessor	22.49	CERT FRAME
23091196	001	ACH	Quill Corp	1000	General	24201	0380	Jail	176.09	OFFICE SUPPLIES
23162937	001	ACH	Quill Corp	1000	General	24201	0380	Jail	30.58	STORAGE
23256511	001	ACH	Quill Corp	4900	Central Comms Center	24201	0303	Communications Dept (Rad	159.30	COPY PAPER
23260253	001	ACH	Quill Corp	4900	Central Comms Center	24201	0303	Communications Dept (Rad	78.98	PAPER PLATES
23071418	001	ACH	Quill Corp	4900	Central Comms Center	24201	0303	Communications Dept (Rad	49.57	WIPES/SWIFFER
23061263	001	ACH	Quill Corp	4900	Central Comms Center	24201	0303	Communications Dept (Rad	33.18	PAPER TOWELS
23084338	001	ACH	Quill Corp	4900	Central Comms Center	24201	0303	Communications Dept (Rad	53.47	HAND TOWELS
23373961	001	ACH	Quill Corp	1000	General	24201	0003	County Treasurer	22.50	OFFICE SUPPLIES
23455198	001	ACH	Quill Corp	1000	General	24201	0003	County Treasurer	91.79	STAMP
JURY PANEL 03012022	001	033580	Randy C. Trinkle	1000	General	30047	0201	Superior Court #1	17.46	APPEARED
2177034	001	ACH	Ray O'herron Co Inc	8130	Bulletproof Vest Grant	44500	0005	County Sheriff	558.00	VEST BLTRPF
2177034 WITH CREDIT 2175427	001	ACH	Ray O'herron Co Inc	1170	LIT Public Safety-Cnty Share	22030	0005	County Sheriff	178.00	UNIFORM
JURY PANEL 03012022	001	033581	Raymond J. Smith	1000	General	30047	0201	Superior Court #1	24.84	APPEARED
G067208-DEC 2021	007	ACH	Regions Corporate Trust	4889	RDA P&I 2018	47380	0701	Redevelopment	284757.50	
32R1797	001	ACH	Reliable Transmission Service-	1176	Motor Vehicle Highway	33450	0529	County Highway	410.00	TRANS DIAGNOSIS
32R1798	001	ACH	Reliable Transmission Service-	1176	Motor Vehicle Highway	33450	0529	County Highway	410.00	TRANS DIAGNOSIS
5063687158	001	033542	Ricoh Usa Inc	1000	General	30016	9616	IT	7.04	122021-011922
5063778744	001	033542	Ricoh Usa Inc	1000	General	30016	9616	IT	42.22	010122-013122
5063954872	001	033542	Ricoh Usa Inc	1000	General	30016	9616	IT	6.45	012022-021922
105860937	001	033543	Ricoh Usa Inc	1000	General	20275	0312	Building Dept (Permits)	103.58	MAR 2022
105888054	001	033543	Ricoh Usa Inc	1000	General	30016	0232	Circuit Court	100.19	MARCH 2022
105916920	001	ACH	Ricoh Usa Inc	1000	General	30016	9616	IT	104.74	031622-042522
5064013571	001	ACH	Ricoh Usa Inc	1000	General	24201	0003	County Treasurer	14.16	FEB 2022 B/W
5064013571	001	ACH	Ricoh Usa Inc	1000	General	24201	0003	County Treasurer	3.60	FEB 2022 COLOR
PUBLIC DEFENDER CONTRACT	001	033544	Riley L. Parr, Attorney at Law	1000	General	30065	0271	Public Defender	1333.33	FEB 2022
2021-03LITCS	001	220252	Ripley Township Trustee	7330	LIT Local Income Tax	50000	0002	County Auditor	2251.00	LITCS DIST MAR22
202038	001	ACH	Ritter Strategic Services	1222	Statewide 911	30050	0303	Communications Dept (Rad	1250.00	MANGED SVC TSK1
JURY PANEL 03012022	001	033582	Robert A. Meier	1000	General	30047	0201	Superior Court #1	36.32	APPEARED
Jury Duty 2/22/22	001	033512	Robert E Heidlebaugh	1000	General	30047	0201	Superior Court #1	27.30	Appeared

022922_031422 Docket.xlsx

Invoice	Bank	Check	Payee Name 1	Fund	Fund Desc	Acct	Loc	Loc Desc	Amount	Comment
Jury Duty 2/22/22	001	033513	Robert E. Hodges	1000	General	30047	0201	Superior Court #1	16.23	Appeared
JURY PANEL 03012022	001	033583	Robert M. Boots Jr	1000	General	30047	0201	Superior Court #1	15.41	APPEARED
3026540804	001	ACH	Rush Truck Centers	1176	Motor Vehicle Highway	23523	0529	County Highway	135.00	SENSOR
292937	001	ACH	Safe Hiring Solutions	1000	General	30030	0068	County Commissioners	24.95	CRIM SEARCH
296111	001	ACH	Safe Hiring Solutions	1000	General	30030	0068	County Commissioners	24.95	CRIM SEARCH
JURY PANEL 03012022	001	033584	Sallie Hester	1000	General	30047	0201	Superior Court #1	24.02	APPEARED
JURY PANEL 03012022	001	033584	Sallie Hester	1000	General	30046	0201	Superior Court #1	8.83	APPEARED
21-178	001	ACH	Sanders Funeral Care	1000	General	30022	0068	County Commissioners	100.00	BURIAL
21-173	001	ACH	Sanders Funeral Care	1000	General	30022	0068	County Commissioners	100.00	BURIAL
22-14	001	ACH	Sanders Funeral Care	1000	General	30022	0068	County Commissioners	100.00	BURIAL
22-21	001	ACH	Sanders Funeral Care	1000	General	30022	0068	County Commissioners	100.00	BURIAL
22-29	001	ACH	Sanders Funeral Care	1000	General	30022	0068	County Commissioners	100.00	BURIAL
	001	ACH	Sanders Funeral Care	1000	General	30022	0068	County Commissioners	100.00	BURIAL
Jury Duty 2/22/22	001	033514	Sara J. Fisher	1000	General	30047	0201	Superior Court #1	17.87	Appeared
JURY PANEL 03012022	001	033585	Sarah J. Gray	1000	General	30047	0201	Superior Court #1	15.82	APPEARED
JURY PANEL 03012022	001	033585	Sarah J. Gray	1000	General	30046	0201	Superior Court #1	19.01	APPEARED
2021-03LITCS	001	220253	Scott Township Trustee	7330	LIT Local Income Tax	50000	0002	County Auditor	1120.42	LITCS DIST MAR22
4607	001	ACH	Security Automation Systems In	1000	General	30124	9616	IT	810.00	CAM LICENSES
Jury Duty 2/22/22	001	033515	Shannon N. Gray	1000	General	30047	0201	Superior Court #1	19.10	Appeared
JURY PANEL 03012022	001	033586	Sharon Harris	1000	General	30047	0201	Superior Court #1	15.82	APPEARED
Jury Duty 2/22/22	001	033516	Sharon K. Redmaster	1000	General	30047	0201	Superior Court #1	15.82	Appeared
JURY PANEL 03012022	001	033587	Shawn L. Schumann	1000	General	30047	0201	Superior Court #1	21.56	APPEARED
JURY PANEL 03012022	001	033588	Steven L. Hanna	1000	General	30047	0201	Superior Court #1	98.04	SERVED
336799/1	001	ACH	Stevenson's Ace Hardware	1176	Motor Vehicle Highway	23523	0529	County Highway	22.99	HOSE
336882/1	001	ACH	Stevenson's Ace Hardware	1176	Motor Vehicle Highway	23523	0529	County Highway	47.98	MAILBOXES
336336/1	001	ACH	Stevenson's Ace Hardware	1000	General	21850	0313	Building Maintenance	101.09	SUPPLIES
2021-03LITCS	001	220254	Sugar Creek Township Trustee	7330	LIT Local Income Tax	50000	0002	County Auditor	1172.58	LITCS DIST MAR22
Jury Duty 2/22/22	001	033517	Susan R. Almond	1000	General	30047	0201	Superior Court #1	48.20	Served
Jury Duty 2/22/22	001	033517	Susan R. Almond	1000	General	30046	0201	Superior Court #1	20.00	Served
JURY PANEL 03012022	001	033589	Suzanne Mullendore	1000	General	30047	0201	Superior Court #1	15.82	APPEARED
JURY PANEL 03012022	001	033589	Suzanne Mullendore	1000	General	30046	0201	Superior Court #1	8.77	APPEARED
02232022	001	ACH	Tactical Weapons & Supply	1170	LIT Public Safety-Cnty Share	44500	0005	County Sheriff	1495.00	BINOCULARS
1051	001	ACH	Taylor Dirt Works Demo &	2600	Drain Construction/Reconst	65110	0006	County Surveyor	11514.75	#584 DEWEY WORK
13292	001	220267	Taylor,Chadd,Minnett, ET AL	1000	General	30230	0068	County Commissioners	6900.00	COMMISH

022922_031422 Docket.xlsx

Invoice	Bank	Check	Payee Name 1	Fund	Fund Desc	Acct	Loc	Loc Desc	Amount	Comment
13293	001	220267	Taylor,Chadd,Minnett, ET AL	1000	General	30230	0068	County Commissioners	640.00	PLAN COMMISH
13294	001	220267	Taylor,Chadd,Minnett, ET AL	1000	General	30230	0068	County Commissioners	420.00	CLERK
13296	001	220267	Taylor,Chadd,Minnett, ET AL	1000	General	30230	0068	County Commissioners	60.00	SUGAR CRK ADVIS
13300	001	220267	Taylor,Chadd,Minnett, ET AL	1000	General	30230	0068	County Commissioners	1020.00	PROBATION
13302	001	220267	Taylor,Chadd,Minnett, ET AL	1000	General	30230	0068	County Commissioners	140.00	HEALTH DEPT
13303	001	220267	Taylor,Chadd,Minnett, ET AL	1000	General	30230	0068	County Commissioners	76.00	AUDITOR
13319	001	220267	Taylor,Chadd,Minnett, ET AL	1000	General	30230	0068	County Commissioners	300.00	RECORDER
14003	001	220267	Taylor,Chadd,Minnett, ET AL	1000	General	30230	0068	County Commissioners	315.00	EDC
13998	001	220267	Taylor,Chadd,Minnett, ET AL	1000	General	30230	0068	County Commissioners	651.00	EMA
13976	001	220267	Taylor,Chadd,Minnett, ET AL	1000	General	30230	0068	County Commissioners	17575.00	COMMISH 1221-012
13977	001	220267	Taylor,Chadd,Minnett, ET AL	1000	General	30230	0068	County Commissioners	1398.00	PLAN COMM JAN22
13979	001	220267	Taylor,Chadd,Minnett, ET AL	1000	General	30230	0068	County Commissioners	100.00	CLERK JAN 2022
13981	001	220267	Taylor,Chadd,Minnett, ET AL	1000	General	30230	0068	County Commissioners	20.00	SUGAR CRK JAN22
13982	001	220267	Taylor,Chadd,Minnett, ET AL	1000	General	30230	0068	County Commissioners	369.00	TREAS JAN 22
13988	001	220267	Taylor,Chadd,Minnett, ET AL	1000	General	30230	0068	County Commissioners	462.00	PROB JAN 22
13990	001	220267	Taylor,Chadd,Minnett, ET AL	1000	General	30230	0068	County Commissioners	105.00	JAIL BUILD JAN22
13991	001	220267	Taylor,Chadd,Minnett, ET AL	1000	General	30230	0068	County Commissioners	380.00	AUDITOR JAN 22
13994	001	220267	Taylor,Chadd,Minnett, ET AL	1000	General	30230	0068	County Commissioners	378.00	ZONING BD JAN22
13993	001	220267	Taylor,Chadd,Minnett, ET AL	1000	General	30230	0068	County Commissioners	100.00	Tort Claim
13992	001	220267	Taylor,Chadd,Minnett, ET AL	1000	General	30230	0068	County Commissioners	60.00	Tort Claim
13987	001	220267	Taylor,Chadd,Minnett, ET AL	1000	General	30230	0068	County Commissioners	100.00	HEALTH DEPT
13980	001	220267	Taylor,Chadd,Minnett, ET AL	1000	General	30230	0068	County Commissioners	800.00	Tort Claim/Suit
13995	001	220267	Taylor,Chadd,Minnett, ET AL	1000	General	30230	0068	County Commissioners	220.00	HSA CLAIM
13999	001	220267	Taylor,Chadd,Minnett, ET AL	1000	General	30230	0068	County Commissioners	200.00	SUIT
14000	001	220267	Taylor,Chadd,Minnett, ET AL	1000	General	30230	0068	County Commissioners	140.00	Tort Claim
14001	001	220267	Taylor,Chadd,Minnett, ET AL	1000	General	30230	0068	County Commissioners	100.00	Tort Claim 2021
14002	001	220267	Taylor,Chadd,Minnett, ET AL	1000	General	30230	0068	County Commissioners	189.00	Tax Sale 2020
14005	001	220267	Taylor,Chadd,Minnett, ET AL	1000	General	30230	0068	County Commissioners	40.00	Tort Claim
14006	001	220267	Taylor,Chadd,Minnett, ET AL	1000	General	30230	0068	County Commissioners	1269.00	Litigation 2022
13996	020	220269	Taylor,Chadd,Minnett, ET AL	4020	Solid Waste Management Fund	30050	0068	County Commissioners	525.00	JAN 2022
14292	001	ACH	Taylor,Chadd,Minnett, ET AL	1000	General	30230	0068	County Commissioners	10374.00	COMMISSIONERS
14293	001	ACH	Taylor,Chadd,Minnett, ET AL	1000	General	30230	0068	County Commissioners	63.00	TREASURER
14294	001	ACH	Taylor,Chadd,Minnett, ET AL	1000	General	30230	0068	County Commissioners	160.00	TORT CLAIM & SUI
14295	001	ACH	Taylor,Chadd,Minnett, ET AL	1000	General	30230	0068	County Commissioners	800.00	SUGAR CRK ADV

022922_031422 Docket.xlsx

Invoice	Bank	Check	Payee Name 1	Fund	Fund Desc	Acct	Loc	Loc Desc	Amount	Comment
14298	001	ACH	Taylor,Chadd,Minnett, ET AL	1000	General	30230	0068	County Commissioners	105.00	PROBATION
14300	001	ACH	Taylor,Chadd,Minnett, ET AL	1000	General	30230	0068	County Commissioners	252.00	AUDITOR
14301	001	ACH	Taylor,Chadd,Minnett, ET AL	1000	General	30230	0068	County Commissioners	63.00	REDEVELOPMENT
14302	001	ACH	Taylor,Chadd,Minnett, ET AL	1000	General	30230	0068	County Commissioners	660.00	TORT CLAIM
14303	001	ACH	Taylor,Chadd,Minnett, ET AL	1000	General	30230	0068	County Commissioners	84.00	ZONING BRO
14305	001	ACH	Taylor,Chadd,Minnett, ET AL	1000	General	30230	0068	County Commissioners	180.00	LAWSUIT
14306	001	ACH	Taylor,Chadd,Minnett, ET AL	1000	General	30230	0068	County Commissioners	294.00	M&M TAX SALE
14307	001	ACH	Taylor,Chadd,Minnett, ET AL	1000	General	30230	0068	County Commissioners	105.00	EDC
14309	001	ACH	Taylor,Chadd,Minnett, ET AL	1000	General	30230	0068	County Commissioners	3391.00	LITIGATION
14310	001	ACH	Taylor,Chadd,Minnett, ET AL	1000	General	30230	0068	County Commissioners	219.00	TORT CLAIM
13986	001	ACH	Taylor,Chadd,Minnett, ET AL	4900	Central Comms Center	30230	0303	Communications Dept (Rad	918.00	JAN SVC
PL4232	001	220268	The Paper Of Montgomery County	1176	Motor Vehicle Highway	30800	0529	County Highway	161.82	LEGAL AD
INV-10545	001	ACH	The Schneider Geospatial Llc	1000	General	30095	9616	IT	2136.00	2ND QTR BEACON
Jury Duty 2/22/22	001	033518	Thomas D Smith	1000	General	30047	0201	Superior Court #1	42.05	Served
Jury Duty 2/22/22	001	033518	Thomas D Smith	1000	General	30046	0201	Superior Court #1	12.72	Served
Jury Duty 2/22/22	001	033519	Thomas J. O'Connell	1000	General	30047	0201	Superior Court #1	22.38	Appeared
2021-03LITCS	001	220255	Town Of Linden	7330	LIT Local Income Tax	50000	0002	County Auditor	2439.33	LITCS DIST MAR22
2021-03LITPS	001	220255	Town Of Linden	7331	Lit Public Safety Fund	50000	0002	County Auditor	1691.50	LITPS DIST MAR22
2021-03LITCS	001	220256	Town Of New Market	7330	LIT Local Income Tax	50000	0002	County Auditor	1883.42	LITCS DIST MAR22
2021-03LITPS	001	220256	Town Of New Market	7331	Lit Public Safety Fund	50000	0002	County Auditor	1306.08	LITPS DIST MAR22
2021-03LITCS	001	220257	Town Of Waveland	7330	LIT Local Income Tax	50000	0002	County Auditor	1073.67	LITCS DIST MAR22
2021-03LITPS	001	220257	Town Of Waveland	7331	Lit Public Safety Fund	50000	0002	County Auditor	744.50	LITPS DIST MAR22
JURY PANEL 03012022	001	033590	Tracie J. Tanner	1000	General	30047	0201	Superior Court #1	21.15	APPEARED
JURY PANEL 03012022	001	033590	Tracie J. Tanner	1000	General	30046	0201	Superior Court #1	16.19	APPEARED
JURY PANEL 03012022	001	033591	Tracy A. Payne	1000	General	30047	0201	Superior Court #1	83.28	SERVED
JURY PANEL 03012022	001	033591	Tracy A. Payne	1000	General	30046	0201	Superior Court #1	13.89	SERVED
JURY PANEL 03012022	001	033592	Travis S. Collins	1000	General	30047	0201	Superior Court #1	27.30	APPEARED
113138	001	ACH	U Rent It Center	1176	Motor Vehicle Highway	23523	0529	County Highway	350.00	TANK REFILL
0821584749	001	033545	Unifirst Corporation	1000	General	30075	0313	Building Maintenance	61.28	FLOOR MATS
0821583028	001	033545	Unifirst Corporation	1000	General	30075	0313	Building Maintenance	60.15	FLOOR MATS
0821577767	001	033545	Unifirst Corporation	1000	General	30075	0313	Building Maintenance	59.50	FLOOR MATS
0821570634	001	033545	Unifirst Corporation	1000	General	30075	0313	Building Maintenance	59.50	FLOOR MATS
0821589983	001	033545	Unifirst Corporation	1000	General	30075	0313	Building Maintenance	60.14	FLOOR MATS
0821589984	001	ACH	Unifirst Corporation	1000	General	30075	0313	Building Maintenance	59.25	FLOOR MATS

022922_031422 Docket.xlsx

Invoice	Bank	Check	Payee Name 1	Fund	Fund Desc	Acct	Loc	Loc Desc	Amount	Comment
2021-03LITCS	001	033531	Union Township Trustee	7330	LIT Local Income Tax	50000	0002	County Auditor	16633.42	LITCS DIST MAR22
2130203-07	001	ACH	United Consulting	1135	Cumulative Bridge	30159	0306	Engineering	9410.00	BRIDGE INSPECT
2130202-07	001	ACH	United Consulting	1135	Cumulative Bridge	47101	0306	Engineering	1608.88	BRIDGE INSP
00004Y65V6082	001	ACH	UPS	1170	LIT Public Safety-Cnty Share	24201	0005	County Sheriff	25.96	SHIPPING
465187771	001	ACH	US Bank Equipment Finance	1000	General	30016	9616	IT	371.13	02-0322 LEASE
14961	001	ACH	USI Consultants	1138	Cumulative Capital Development	30191	0068	County Commissioners	650.00	JAN 2022
75606345	001	ACH	Van Ausdall & Farrar Inc.	1000	General	30016	0009	Prosecuting Attorney	233.29	MARCH 2022
	001	220271	Ventanex, Inc	1000	General	12060	0068	County Commissioners	2000.00	W/E 030422
	001	220272	Ventanex, Inc	4700	Self Insurance	00033	0068	County Commissioners	2477.05	W/E 03042022
Jury Duty 2/22/22	001	033520	Victor C. Grimes	1000	General	30047	0201	Superior Court #1	15.82	Appeared
29306	020	220270	W Enterprises LLC	4020	Solid Waste Management Fund	30050	0506	Solid Waste	4500.00	JAN22 CITY
29307	020	220270	W Enterprises LLC	4020	Solid Waste Management Fund	30050	0506	Solid Waste	119.50	JAN22 2.39 TON
29308	020	220270	W Enterprises LLC	4020	Solid Waste Management Fund	30050	0506	Solid Waste	1950.00	JAN22 COLLECTION
2021-03LITCS	001	220258	Walnut Township Trustee	7330	LIT Local Income Tax	50000	0002	County Auditor	1217.42	LITCS DIST MAR22
35119	001	ACH	Walt's Service	1170	LIT Public Safety-Cnty Share	30100	0005	County Sheriff	544.55	RADIATOR
35130	001	ACH	Walt's Service	1170	LIT Public Safety-Cnty Share	30100	0005	County Sheriff	199.68	BRAKES/ROTORS
2021-03LITCS	001	220259	Waveland Public Library	7330	LIT Local Income Tax	50000	0002	County Auditor	2404.33	LITCS DIST MAR22
2021-03LITCS	001	220260	Wayne Township Trustee	7330	LIT Local Income Tax	50000	0002	County Auditor	1374.50	LITCS DIST MAR22
2021-03LITCS	001	220261	Waynetown Clerk Treasurer	7330	LIT Local Income Tax	50000	0002	County Auditor	2837.50	LITCS DIST MAR22
2021-03LITPS	001	220261	Waynetown Clerk Treasurer	7331	Lit Public Safety Fund	50000	0002	County Auditor	1967.67	LITPS DIST MAR22
565254 WATER TREATMENT	001	ACH	Weas Engineering	1000	General	30083	0380	Jail	253.87	JAN-JUNE 2022
A06880	001	ACH	West Side Tractor Sales	1173	MVH Restricted Fund	44500	0529	County Highway	5100.00	FEB 2022
79113619	001	ACH	Wex	1170	LIT Public Safety-Cnty Share	21000	0005	County Sheriff	184.26	FEB FUEL
20P58618	001	ACH	Wiers International Trucks	1176	Motor Vehicle Highway	23523	0529	County Highway	879.48	FUEL FILTERS
JURY PANEL 03012022	001	033593	William B. Williams	1000	General	30047	0201	Superior Court #1	17.46	APPEARED
JURY PANEL 03012022	001	033593	William B. Williams	1000	General	30046	0201	Superior Court #1	9.62	APPEARED
Jury Duty 2/22/22	001	033521	Wilma R. Coy	1000	General	30047	0201	Superior Court #1	18.28	Appeared
22-35518	001	ACH	Wilson's 24 Hour Towing	1176	Motor Vehicle Highway	33450	0529	County Highway	1200.00	WINCH OUT
2021-03LITCS	001	220262	Wingate Clk Treasurer	7330	LIT Local Income Tax	50000	0002	County Auditor	1834.67	LITCS DIST MAR22
2021-03LITPS	001	220262	Wingate Clk Treasurer	7331	Lit Public Safety Fund	50000	0002	County Auditor	1272.25	LITPS DIST MAR22
TOTAL FOR PERIOD									\$1,847,699.17	

Payroll Claims

Sunday, March 6, 2022 4:37 PM

02252022payroll

Employee Name	Pay Record	Current Pay Group	History Pay Group	Current Benefit Group	History Benefit Group	Amount	Budget Account Code	Current Pay Type	History Pay Type
Stadler, Mia R	Pay 01	Salary	Salary	Follow the Fund	Follow the Fund	1,250.00	8300.11064.000.0610	Salary	Salary
Northcutt, Greg A	Pay 01	Salary	Salary	Commissioners	Commissioners	96.15	1000.11021.000.0313	Salary	Salary
Northcutt, Greg A	Pay 01	Salary	Salary	Commissioners	Commissioners	1,709.60	1000.11983.000.0313	Salary	Salary
Clouser, Brooke E	Pay 01	Salary	Salary	CCC 1222	CCC 1222	2,008.00	1222.11730.000.0303	Salary	Salary
Osborn, Jessica T	Pay 01	Salary	Salary	Commissioners	Commissioners	1,552.54	1000.11026.000.0235	Salary	Salary
Kirby, Jared R	Pay 01	Salary	Salary	Commissioners	Commissioners	386.37	1170.11021.000.0005	Salary	Salary
Kirby, Jared R	Pay 01	Salary	Salary	Commissioners	Commissioners	2,211.54	1170.11935.000.0005	Salary	Salary
Berry, Caleb T	Pay 01	Salary	Salary	Commissioners	Commissioners	266.02	1170.11021.000.0005	Salary	Salary
Berry, Caleb T	Pay 01	Salary	Salary	Commissioners	Commissioners	1,986.54	1170.11222.000.0005	Salary	Salary
Hines, Sarah A	Pay 01	Salary	Salary	CCC 1222	CCC 1222	90.68	1222.11021.000.0303	Salary	Salary
Hines, Sarah A	Pay 01	Salary	Salary	CCC 1222	CCC 1222	2,341.42	1222.11303.000.0303	Salary	Salary
Andel, Jennifer J	Pay 01	Salary	Salary	Commissioners	Commissioners	2,518.27	1000.11100.000.0002	Salary	Salary
Wiles, Courtney D	Pay 01	Salary	Salary	Statewide 911	Statewide 911	122.32	4900.11021.000.0303	Salary	Salary
Wiles, Courtney D	Pay 01	Salary	Salary	Statewide 911	Statewide 911	1,630.69	4900.11830.000.0303	Salary	Salary
Douglas, Karyn D	Pay 01	Salary	Salary	Commissioners	Commissioners	1,933.81	1000.11100.000.0001	Salary	Salary
Garing, Dylan J	Pay 01	Salary	Salary	Commissioners	Commissioners	1,375.00	1000.11492.000.0380	Salary	Salary
Ratcliff, Nicole L	Pay 01	Salary	Salary	Commissioners	Commissioners	1,440.54	1000.11202.000.0002	Salary	Salary
McCarty, Matt P	Pay 01	Salary	Salary	Commissioners	Commissioners	3,241.96	1170.11205.000.0005	Salary	Salary
Laplaunt, Nichole E	Pay 01	Salary	Salary	Commissioners	Commissioners	2,152.50	4905.11125.000.0235	Salary	Salary
Watson, Jacob M	Pay 01	Salary	Salary	Commissioners	Commissioners	95.22	1170.11021.000.0005	Salary	Salary
Watson, Jacob M	Pay 01	Salary	Salary	Commissioners	Commissioners	2,589.23	1170.11305.000.0005	Salary	Salary
Riddle, Terry L	Pay 01	Salary	Salary	Highway	Highway	1,173.83	1176.11021.000.0529	Salary	Salary
Riddle, Terry L	Pay 01	Salary	Salary	Highway	Highway	1,626.12	1176.11752.000.0529	Salary	Salary
Garrard, Earlene L	Pay 01	Salary	Salary	Commissioners	Commissioners	1,865.42	1224.11503.000.0008	Salary	Salary
Teal, Anthony S	Pay 01	Salary	Salary	Commissioners	Commissioners	336.30	1170.11021.000.0005	Salary	Salary
Teal, Anthony S	Pay 01	Salary	Salary	Commissioners	Commissioners	2,510.77	1170.11936.000.0005	Salary	Salary
Riehle, Brian A	Pay 01	Salary	Salary	Commissioners	Commissioners	2,438.46	1170.11815.000.0005	Salary	Salary
Jones, Ashley N	Pay 01	Salary	Salary	Commissioners	Commissioners	1,299.42	1000.11460.000.0660	Salary	Salary
Melvin, Kathryn J	Pay 01	Salary	Salary	Statewide 911	Statewide 911	1,603.12	4900.11613.000.0303	Salary	Salary
Dulin, Kristopher M	Pay 01	Salary	Salary	Highway	Highway	157.54	1173.11090.000.0529	Salary	Salary
Dulin, Kristopher M	Pay 01	Salary	Salary	Highway	Highway	1,019.06	1176.11021.000.0529	Salary	Salary
Dulin, Kristopher M	Pay 01	Salary	Salary	Highway	Highway	1,417.84	1176.11452.000.0529	Salary	Salary
Donahue, Caleb A	Pay 01	Salary	Salary	Highway	Highway	285.54	1173.11090.000.0529	Salary	Salary
Donahue, Caleb A	Pay 01	Salary	Salary	Highway	Highway	1,289.84	1176.11007.000.0529	Salary	Salary
Donahue, Caleb A	Pay 01	Salary	Salary	Highway	Highway	1,048.60	1176.11021.000.0529	Salary	Salary
Walke, Traci C	Pay 01	Salary	Salary	Commissioners	Commissioners	1,440.54	1000.11902.000.0002	Salary	Salary
Felker, Lori A	Pay 01	Salary	Salary	Commissioners	Commissioners	247.28	1000.11021.000.0380	Salary	Salary
Felker, Lori A	Pay 01	Salary	Salary	Commissioners	Commissioners	1,807.69	1000.11498.000.0380	Salary	Salary

02252022payroll

Employee Name	Pay Record	Current Pay Group	History Pay Group	Current Benefit Group	History Benefit Group	Amount	Budget Account Code	Current Pay Type	History Pay Type
Klein, Thomas A	Pay 01	Salary	Salary	Commissioners	Commissioners	3,726.92	1000.11120.000.0068	Salary	Salary
Beuoy, Ryan M	Pay 01	Salary	Salary	Commissioners	Commissioners	2,464.96	4923.11821.000.0271	Salary	Salary
Pearson, Layton A	Pay 01	Salary	Salary	Commissioners	Commissioners	1,180.46	1000.11412.000.0660	Salary	Salary
Weimer, Inez J	Pay 01	Salary	Salary	Commissioners	Commissioners	109.72	1000.11021.000.0380	Salary	Salary
Weimer, Inez J	Pay 01	Salary	Salary	Commissioners	Commissioners	1,567.31	1000.11496.000.0380	Salary	Salary
Smith, Constance S	Pay 01	Salary	Salary	Commissioners	Commissioners	1,293.58	1000.11930.000.0380	Salary	Salary
Cutts, Eric A	Pay 01	Salary	Salary	Commissioners	Commissioners	505.84	4905.11023.000.0235	Salary	Salary
Cutts, Eric A	Pay 01	Salary	Salary	Commissioners	Commissioners	2,152.50	9177.11027.000.0235	Salary	Salary
McNulty, Alayna R	Pay 01	Salary	Salary	Statewide 911	Statewide 911	1,603.12	4900.11813.000.0303	Salary	Salary
Hechinger, Robert J	Pay 01	Salary	Salary	Commissioners	Commissioners	275.03	1170.11021.000.0005	Salary	Salary
Hechinger, Robert J	Pay 01	Salary	Salary	Commissioners	Commissioners	2,161.54	1170.11270.000.0005	Salary	Salary
Nichols, Brody B	Pay 01	Salary	Salary	Commissioners	Commissioners	1,519.23	1000.11339.000.0379	Salary	Salary
Fulwider, James D	Pay 01	Salary	Salary	Commissioners	Commissioners	823.08	1000.11268.000.0068	Salary	Salary
Redmon, Ethan M	Pay 01	Salary	Salary	Commissioners	Commissioners	210.15	1170.11021.000.0005	Salary	Salary
Redmon, Ethan M	Pay 01	Salary	Salary	Commissioners	Commissioners	2,161.54	1170.11355.000.0005	Salary	Salary
Swank, Nisha C	Pay 01	Salary	Salary	Commissioners	Commissioners	1,663.46	1000.11238.000.0380	Salary	Salary
Bailey, C T	Pay 01	Salary	Salary	Commissioners	Commissioners	1,567.31	1000.11039.000.0379	Salary	Salary
Sarver, Thomas D	Pay 01	Salary	Salary	Commissioners	Commissioners	2,775.92	1000.11160.000.0660	Salary	Salary
Fletcher, Nathaniel G	Pay 01	Salary	Salary	Commissioners	Commissioners	338.44	1000.11021.000.0380	Salary	Salary
Fletcher, Nathaniel G	Pay 01	Salary	Salary	Commissioners	Commissioners	1,403.85	1000.11298.000.0380	Salary	Salary
Johnson, Shannon M	Pay 01	Salary	Salary	Central Comms Center	Central Comms Center	1,103.76	4900.11313.000.0303	Salary	Salary
Lough, Jacob N	Pay 01	Salary	Salary	Highway	Highway	2,664.65	1176.11052.000.0529	Salary	Salary
Light, Cynthia S	Pay 01	Salary	Salary	Commissioners	Commissioners	1,552.92	1000.11360.000.0660	Salary	Salary
Northcutt, Adrienne R	Pay 01	Salary	Salary	HD	HD	1,617.00	1159.11061.000.0610	Salary	Salary
Gilliland, Patrick T	Pay 01	Salary	Salary	Commissioners	Commissioners	2,100.85	1000.11225.000.0235	Salary	Salary
Gilliland, Patrick T	Pay 01	Salary	Salary	Commissioners	Commissioners	210.10	2100.11021.000.0235	Salary	Salary
Waling, Ashlee N	Pay 01	Salary	Salary	Commissioners	Commissioners	215.25	2100.11021.000.0235	Salary	Salary
Waling, Ashlee N	Pay 01	Salary	Salary	Commissioners	Commissioners	2,152.50	2100.11025.000.0235	Salary	Salary
Traugher, Kathy A	Pay 01	Salary	Salary	Commissioners	Commissioners	1,670.58	1189.11300.000.0004	Salary	Salary
Boyer III, William H	Pay 01	Salary	Salary	Commissioners	Commissioners	193.20	1000.11021.000.0380	Salary	Salary
Boyer III, William H	Pay 01	Salary	Salary	Commissioners	Commissioners	1,403.85	1000.11489.000.0380	Salary	Salary
Allen, Michael J	Pay 01	Salary	Salary	Highway	Highway	227.29	1173.11090.000.0529	Salary	Salary
Allen, Michael J	Pay 01	Salary	Salary	Highway	Highway	1,704.64	1176.11021.000.0529	Salary	Salary
Allen, Michael J	Pay 01	Salary	Salary	Highway	Highway	2,045.59	1176.11085.000.0529	Salary	Salary
King, Travis M	Pay 01	Salary	Salary	Commissioners	Commissioners	2,877.88	1170.11274.000.0005	Salary	Salary
Bowling, Michelle V	Pay 01	Salary	Salary	Commissioners	Commissioners	1,386.04	1170.11405.000.0005	Salary	Salary
Heggemeier, Loren W	Pay 01	Salary	Salary	Highway	Highway	330.45	1173.11090.000.0529	Salary	Salary
Heggemeier, Loren W	Pay 01	Salary	Salary	Highway	Highway	681.56	1176.11021.000.0529	Salary	Salary

02252022payroll

Employee Name	Pay Record	Current Pay Group	History Pay Group	Current Benefit Group	History Benefit Group	Amount	Budget Account Code	Current Pay Type	History Pay Type
Heggemeier, Loren W	Pay 01	Salary	Salary	Highway	Highway	1,321.82	1176.11073.000.0529	Salary	Salary
Feltner, Barbara M	Pay 01	Salary	Salary	Commissioners	Commissioners	1,517.54	1000.11409.000.0235	Salary	Salary
Callahan, Timothy L	Pay 01	Salary	Salary	Statewide 911	Statewide 911	1,340.28	4900.11713.000.0303	Salary	Salary
Lesko, Kara D	Pay 01	Salary	Salary	Commissioners	Commissioners	1,228.46	1000.11400.000.0201	Salary	Salary
Sandusky, Kimberly H	Pay 01	Salary	Salary	Commissioners	Commissioners	1,743.12	1000.11401.000.0001	Salary	Salary
Clouser, Cade M	Pay 01	Salary	Salary	Statewide 911	Statewide 911	1,537.50	4900.11513.000.0303	Salary	Salary
Curtis, Shelby J	Pay 01	Salary	Salary	Commissioners	Commissioners	272.78	1170.11021.000.0005	Salary	Salary
Curtis, Shelby J	Pay 01	Salary	Salary	Commissioners	Commissioners	2,036.54	1170.11383.000.0005	Salary	Salary
Hedrick, Nicholas R	Pay 01	Salary	Salary	Commissioners	Commissioners	1,157.31	1000.11209.000.0271	Salary	Salary
Oldham, Racheal A	Pay 01	Salary	Salary	Commissioners	Commissioners	2,648.85	9106.11028.000.0235	Salary	Salary
Southard, Rachel A	Pay 01	Salary	Salary	Commissioners	Commissioners	1,295.15	1000.11211.000.0001	Salary	Salary
Hunt, David T	Pay 01	Salary	Salary	Commissioners	Commissioners	192.31	1000.11261.000.0061	Salary	Salary
Cope, Vicki R	Pay 01	Salary	Salary	Statewide 911	Statewide 911	129.40	4900.11021.000.0303	Salary	Salary
Cope, Vicki R	Pay 01	Salary	Salary	Statewide 911	Statewide 911	1,667.73	4900.11307.000.0303	Salary	Salary
McAnulty, Linda M	Pay 01	Salary	Salary	Commissioners	Commissioners	1,318.35	1000.11321.000.0201	Salary	Salary
Brady, Scott W	Pay 01	Salary	Salary	Highway	Highway	424.84	1173.11090.000.0529	Salary	Salary
Brady, Scott W	Pay 01	Salary	Salary	Highway	Highway	1,699.35	1176.11257.000.0529	Salary	Salary
Thomen, Austin D	Pay 01	Salary	Salary	Commissioners	Commissioners	299.78	1170.11021.000.0005	Salary	Salary
Thomen, Austin D	Pay 01	Salary	Salary	Commissioners	Commissioners	2,161.54	1170.11235.000.0005	Salary	Salary
Geigle, Andria L	Pay 01	Salary	Salary	Commissioners	Commissioners	3,378.27	1000.11228.000.0235	Salary	Salary
Walters, Brookanna L	Pay 01	Salary	Salary	HD	HD	3,719.23	1159.11459.000.0610	Salary	Salary
Phillips, Samantha K	Pay 01	Salary	Salary	Commissioners	Commissioners	1,204.38	1000.11400.000.0202	Salary	Salary
Proctor, Kyle A	Pay 01	Salary	Salary	Commissioners	Commissioners	1,259.54	1170.11945.000.0005	Salary	Salary
Lowe, Nema G	Pay 01	Salary	Salary	Commissioners	Commissioners	1,750.00	1000.11370.000.0380	Salary	Salary
Black, Rachel R	Pay 01	Salary	Salary	Commissioners	Commissioners	1,267.15	1000.11321.000.0202	Salary	Salary
Buttery, Hannah R	Pay 01	Part Time	Part Time	HD	HD	594.00	1159.11133.000.0610	Hourly	Hourly
Thomas, Rebekah L	Pay 01	Salary	Salary	Commissioners	Commissioners	1,220.46	1000.11204.000.0001	Salary	Salary
Rowe, Zoey J	Pay 01	Part Time	Part Time	Commissioners	Commissioners	200.08	1000.11507.000.0007	Salary	Salary
Blanton, Ronald L	Pay 01	Salary	Salary	Highway	Highway	1,672.68	1176.11021.000.0529	Salary	Salary
Blanton, Ronald L	Pay 01	Salary	Salary	Highway	Highway	2,272.88	1176.11859.000.0529	Salary	Salary
Frey, John E	Pay 01	Salary	Salary	Commissioners	Commissioners	823.08	1000.11368.000.0068	Salary	Salary
Thomas, Cole R	Pay 01	Salary	Salary	Commissioners	Commissioners	1,258.60	1000.11380.000.0380	Salary	Salary
Steelsmith, Seth A	Pay 01	Salary	Salary	Highway	Highway	306.51	1173.11090.000.0529	Salary	Salary
Steelsmith, Seth A	Pay 01	Salary	Salary	Highway	Highway	1,388.85	1176.11021.000.0529	Salary	Salary
Steelsmith, Seth A	Pay 01	Salary	Salary	Highway	Highway	1,736.87	1176.11072.000.0529	Salary	Salary
Kinnett, Richard L	Pay 01	Salary	Salary	Commissioners	Commissioners	1,497.19	1000.11109.000.0009	Salary	Salary
Bentley, Sherri L	Pay 01	Salary	Salary	Commissioners	Commissioners	2,165.54	1000.11100.000.0008	Salary	Salary
Hughes, Jeremy A	Pay 01	Salary	Salary	Commissioners	Commissioners	102.78	1170.11021.000.0005	Salary	Salary

02252022payroll

Employee Name	Pay Record	Current Pay Group	History Pay Group	Current Benefit Group	History Benefit Group	Amount	Budget Account Code	Current Pay Type	History Pay Type
Hughes, Jeremy A	Pay 01	Salary	Salary	Commissioners	Commissioners	2,877.88	1170.11505.000.0005	Salary	Salary
Jones, Stephen W	Pay 01	Salary	Salary	Highway	Highway	384.42	1173.11090.000.0529	Salary	Salary
Jones, Stephen W	Pay 01	Salary	Salary	Highway	Highway	1,063.15	1176.11021.000.0529	Salary	Salary
Jones, Stephen W	Pay 01	Salary	Salary	Highway	Highway	1,537.66	1176.11642.000.0529	Salary	Salary
Wilson, Loudella E	Pay 01	Salary	Salary	Commissioners	Commissioners	1,757.85	1000.11418.000.0380	Salary	Salary
Hampton, Dave W	Pay 01	Salary	Salary	Commissioners	Commissioners	1,332.23	1000.11132.000.0312	Salary	Salary
Emmert, Vicki A	Pay 01	Part Time	Part Time	Commissioners	Commissioners	267.98	1000.11168.000.0006	Hourly	Hourly
Conkright, John W	Pay 01	Salary	Salary	Highway	Highway	2,272.88	1176.11279.000.0529	Salary	Salary
Ledbetter, Sherri A	Pay 01	Salary	Salary	Commissioners	Commissioners	1,680.92	1000.11260.000.0660	Salary	Salary
Mitchell, Braden D	Pay 01	Salary	Salary	Commissioners	Commissioners	269.48	1170.11021.000.0005	Salary	Salary
Mitchell, Braden D	Pay 01	Salary	Salary	Commissioners	Commissioners	2,011.54	1170.11301.000.0005	Salary	Salary
Kinnett, Patricia R	Pay 01	Part Time	Part Time	Commissioners	Commissioners	528.00	1000.11201.000.0001	Hourly	Hourly
Parker, Conner D	Pay 01	Salary	Salary	Commissioners	Commissioners	180.30	1000.11021.000.0380	Salary	Salary
Parker, Conner D	Pay 01	Salary	Salary	Commissioners	Commissioners	1,346.15	1000.11491.000.0380	Salary	Salary
Forman, Darren D	Pay 01	Salary	Salary	Commissioners	Commissioners	764.38	1000.11100.000.0007	Salary	Salary
Ranard, Brennan D	Pay 01	Salary	Salary	Highway	Highway	298.56	1173.11090.000.0529	Salary	Salary
Ranard, Brennan D	Pay 01	Salary	Salary	Highway	Highway	1,407.52	1176.11077.000.0529	Salary	Salary
Hedge, Jeffery A	Pay 01	Salary	Salary	Highway	Highway	494.33	1173.11090.000.0529	Salary	Salary
Hedge, Jeffery A	Pay 01	Salary	Salary	Highway	Highway	1,153.43	1176.11021.000.0529	Salary	Salary
Hedge, Jeffery A	Pay 01	Salary	Salary	Highway	Highway	1,702.71	1176.11402.000.0529	Salary	Salary
Mills, Don G	Pay 01	Salary	Salary	Commissioners	Commissioners	192.31	1000.11261.000.0061	Salary	Salary
Byers, Stacey L	Pay 01	Salary	Salary	Commissioners	Commissioners	1,383.15	1000.11209.000.0009	Salary	Salary
Cummins, Thomas E	Pay 01	Salary	Salary	Commissioners	Commissioners	2,125.31	1000.11006.000.0006	Salary	Salary
Froedge, Jill A	Pay 01	Salary	Salary	Commissioners	Commissioners	1,774.31	1000.11321.000.0232	Salary	Salary
Gable, Faith T	Pay 01	Salary	Salary	Commissioners	Commissioners	2,122.31	1000.11523.000.0235	Salary	Salary
Church, Erica E	Pay 01	Salary	Salary	Commissioners	Commissioners	1,137.69	1000.11502.000.0202	Salary	Salary
Walters, Jeffery L	Pay 01	Part Time	Part Time	Commissioners	Commissioners	603.50	4950.11055.000.0005	Hourly	Hourly
Lough, Cody A	Pay 01	Salary	Salary	Highway	Highway	162.61	1173.11090.000.0529	Salary	Salary
Lough, Cody A	Pay 01	Salary	Salary	Highway	Highway	289.65	1176.11021.000.0529	Salary	Salary
Lough, Cody A	Pay 01	Salary	Salary	Highway	Highway	1,463.51	1176.11080.000.0529	Salary	Salary
Warren, Cheyenne M	Pay 01	Salary	Salary	Commissioners	Commissioners	1,617.31	1000.11497.000.0380	Salary	Salary
Joyce, Karla S	Pay 01	Salary	Salary	Statewide 911	Statewide 911	1,576.93	4900.11414.000.0303	Salary	Salary
Campbell, Brian K	Pay 01	Salary	Salary	Commissioners	Commissioners	1,668.92	1000.11230.000.9655	Salary	Salary
Harshbarger, Jennifer S	Pay 01	Salary	Salary	Commissioners	Commissioners	1,306.12	1000.11721.000.0271	Salary	Salary
Boller, Cameron L	Pay 01	Salary	Salary	Commissioners	Commissioners	225.63	1000.11021.000.0380	Salary	Salary
Boller, Cameron L	Pay 01	Salary	Salary	Commissioners	Commissioners	1,403.85	1000.11580.000.0380	Salary	Salary
Swick, Cody J	Pay 01	Salary	Salary	Commissioners	Commissioners	226.64	1000.11021.000.0380	Salary	Salary
Swick, Cody J	Pay 01	Salary	Salary	Commissioners	Commissioners	1,302.39	1000.11382.000.0380	Salary	Salary

02252022payroll

Employee Name	Pay Record	Current Pay Group	History Pay Group	Current Benefit Group	History Benefit Group	Amount	Budget Account Code	Current Pay Type	History Pay Type
Dodds, Regina M	Pay 01	Salary	Salary	Commissioners	Commissioners	515.55	1000.11021.000.0380	Salary	Salary
Dodds, Regina M	Pay 01	Salary	Salary	Commissioners	Commissioners	1,375.00	1000.11486.000.0380	Salary	Salary
Laffoon, Heather R	Pay 01	Salary	Salary	Commissioners	Commissioners	1,838.35	1000.11100.000.0003	Salary	Salary
Barth, Katie M	Pay 01	Salary	Salary	Follow the Fund	Follow the Fund	1,326.92	8300.11065.000.0610	Salary	Salary
McCoy, Bradley J	Pay 01	Salary	Salary	Highway	Highway	101.63	1173.11090.000.0529	Salary	Salary
McCoy, Bradley J	Pay 01	Salary	Salary	Highway	Highway	503.07	1176.11021.000.0529	Salary	Salary
McCoy, Bradley J	Pay 01	Salary	Salary	Highway	Highway	1,524.49	1176.11319.000.0529	Salary	Salary
Pike, Drake A	Pay 01	Salary	Salary	Commissioners	Commissioners	1,432.69	1000.11328.000.0380	Salary	Salary
Kirk, Gabriel J	Pay 01	Salary	Salary	Commissioners	Commissioners	1,552.54	2100.11525.000.0235	Salary	Salary
Stonebraker, Casey T	Pay 01	Salary	Salary	Commissioners	Commissioners	1,490.38	1000.11703.000.0380	Salary	Salary
Sweeney, Megan R	Pay 01	Salary	Salary	Commissioners	Commissioners	1,220.08	1000.11209.000.0750	Salary	Salary
Yohler, Courtne E	Pay 01	Salary	Salary	Commissioners	Commissioners	1,137.69	1000.11502.000.0201	Salary	Salary
Fullenwider, Benjamin D	Pay 01	Salary	Salary	Commissioners	Commissioners	66.40	1170.11021.000.0005	Salary	Salary
Fullenwider, Benjamin D	Pay 01	Salary	Salary	Commissioners	Commissioners	2,286.54	1170.11905.000.0005	Salary	Salary
Smith, Mark	Pay 01	Salary	Salary	Commissioners	Commissioners	192.31	1000.11261.000.0061	Salary	Salary
Burget, Jessica L	Pay 01	Salary	Salary	Commissioners	Commissioners	1,157.31	1000.11809.000.9655	Salary	Salary
Adams, Michael S	Pay 01	Salary	Salary	Highway	Highway	157.54	1173.11090.000.0529	Salary	Salary
Adams, Michael S	Pay 01	Salary	Salary	Highway	Highway	723.68	1176.11021.000.0529	Salary	Salary
Adams, Michael S	Pay 01	Salary	Salary	Highway	Highway	1,417.84	1176.11429.000.0529	Salary	Salary
Beavers, Edward J	Pay 01	Salary	Salary	Highway	Highway	484.00	1176.11021.000.0529	Salary	Salary
Beavers, Edward J	Pay 01	Salary	Salary	Highway	Highway	1,912.15	1176.11375.000.0529	Salary	Salary
Caldwell, Melissa A	Pay 01	Salary	Salary	Commissioners	Commissioners	1,754.12	1000.11209.000.0312	Salary	Salary
Weller, Mary J	Pay 01	Part Time	Part Time	Follow the Fund	Follow the Fund	442.50	1189.11168.000.0004	Hourly	Hourly
Peck, James M	Pay 01	Salary	Salary	Highway	Highway	3,918.31	1176.11010.000.0306	Salary	Salary
Lowery, Breana L	Pay 01	Salary	Salary	Commissioners	Commissioners	556.58	1000.11487.000.0380	Salary	Salary
Koury, Mycah A	Pay 01	Salary	Salary	CCC 1222	CCC 1222	1,769.23	1222.11307.000.0303	Salary	Salary
Moore, Jacob A	Pay 01	Salary	Salary	Commissioners	Commissioners	2,564.54	1000.11160.000.0009	Salary	Salary
Northcutt, Isaac M	Pay 01	Salary	Salary	Highway	Highway	160.05	1173.11090.000.0529	Salary	Salary
Northcutt, Isaac M	Pay 01	Salary	Salary	Highway	Highway	825.25	1176.11021.000.0529	Salary	Salary
Northcutt, Isaac M	Pay 01	Salary	Salary	Highway	Highway	1,440.45	1176.11070.000.0529	Salary	Salary
Henry, Sherri K	Pay 01	Salary	Salary	CCC 1222	CCC 1222	2,576.92	1222.11102.000.0303	Salary	Salary
Payne, Brenda S	Pay 01	Salary	Salary	Commissioners	Commissioners	2,348.58	1000.11244.000.0235	Salary	Salary
Dale, Connie K	Pay 01	Salary	Salary	Commissioners	Commissioners	2,225.85	1170.11705.000.0005	Salary	Salary
Sweet, Mark A	Pay 01	Salary	Salary	Highway	Highway	330.45	1173.11090.000.0529	Salary	Salary
Sweet, Mark A	Pay 01	Salary	Salary	Highway	Highway	1,321.78	1176.11012.000.0529	Salary	Salary
Sweet, Mark A	Pay 01	Salary	Salary	Highway	Highway	650.56	1176.11021.000.0529	Salary	Salary
Parker, Samantha R	Pay 01	Salary	Salary	Commissioners	Commissioners	1,157.31	1000.11809.000.0009	Salary	Salary
Parker, Nicole L	Pay 01	Salary	Salary	CCC 1222	CCC 1222	2,481.15	1222.11233.000.0303	Salary	Salary

02252022payroll

Employee Name	Pay Record	Current Pay Group	History Pay Group	Current Benefit Group	History Benefit Group	Amount	Budget Account Code	Current Pay Type	History Pay Type
Hodges, Amie J	Pay 01	Salary	Salary	Commissioners	Commissioners	1,683.69	1000.11400.000.0232	Salary	Salary
Olin, Matthew J	Pay 01	Salary	Salary	Highway	Highway	222.28	1173.11090.000.0529	Salary	Salary
Olin, Matthew J	Pay 01	Salary	Salary	Highway	Highway	1,750.39	1176.11021.000.0529	Salary	Salary
Olin, Matthew J	Pay 01	Salary	Salary	Highway	Highway	2,000.45	1176.11506.000.0529	Salary	Salary
Clark, Brady M	Pay 01	Salary	Salary	Commissioners	Commissioners	1,375.00	1000.11494.000.0380	Salary	Salary
Miller, Gregory H	Pay 01	Salary	Salary	Commissioners	Commissioners	2,615.81	1000.11290.000.0009	Salary	Salary
Guard, Forest D	Pay 01	Salary	Salary	Commissioners	Commissioners	823.08	1000.11068.000.0068	Salary	Salary
Swazay, Angela D	Pay 01	Salary	Salary	Commissioners	Commissioners	1,813.54	1000.11119.000.0660	Salary	Salary
Todd, Richard R	Pay 01	Salary	Salary	Commissioners	Commissioners	227.60	1170.11021.000.0005	Salary	Salary
Todd, Richard R	Pay 01	Salary	Salary	Commissioners	Commissioners	2,510.77	1170.11215.000.0005	Salary	Salary
Boyer IV, William H	Pay 01	Salary	Salary	Commissioners	Commissioners	183.89	1000.11021.000.0380	Salary	Salary
Boyer IV, William H	Pay 01	Salary	Salary	Commissioners	Commissioners	1,432.69	1000.11490.000.0380	Salary	Salary
Ramos, Sandra A	Pay 01	Salary	Salary	Highway	Highway	1,572.73	1176.11259.000.0529	Salary	Salary
Reed, Amber D	Pay 01	Salary	Salary	HD	HD	2,115.38	1159.11516.000.0610	Salary	Salary
Yerkes-Mason, Deborah L	Pay 01	Salary	Salary	Commissioners	Commissioners	1,264.08	1224.11208.000.0008	Salary	Salary
Newlin, Timothy D	Pay 01	Salary	Salary	Commissioners	Commissioners	24.55	1000.11021.000.0380	Salary	Salary
Newlin, Timothy D	Pay 01	Salary	Salary	Commissioners	Commissioners	1,375.00	1000.11302.000.0380	Salary	Salary
Portwood, Cheryl F	Pay 01	Salary	Salary	Commissioners	Commissioners	1,196.54	1000.11503.000.0003	Salary	Salary
Lough, Kristin N	Pay 01	Salary	Salary	Commissioners	Commissioners	1,384.62	1000.11702.000.0002	Salary	Salary
Griffith, Jennifer A	Pay 01	Salary	Salary	Commissioners	Commissioners	2,211.54	1170.11275.000.0005	Salary	Salary
Bohlander, Jacob R	Pay 01	Salary	Salary	Commissioners	Commissioners	192.31	1000.11261.000.0061	Salary	Salary
Denbo, Leah L	Pay 01	Salary	Salary	Commissioners	Commissioners	1,779.23	1000.11300.000.0001	Salary	Salary
Orr, Donald S	Pay 01	Salary	Salary	HD	HD	1,523.77	1159.11216.000.0610	Salary	Salary
Melvin, Brent D	Pay 01	Salary	Salary	Highway	Highway	330.45	1173.11090.000.0529	Salary	Salary
Melvin, Brent D	Pay 01	Salary	Salary	Highway	Highway	1,321.78	1176.11008.000.0529	Salary	Salary
Melvin, Brent D	Pay 01	Salary	Salary	Highway	Highway	820.94	1176.11021.000.0529	Salary	Salary
Rice, Anthony J	Pay 01	Salary	Salary	Commissioners	Commissioners	2,386.54	1170.11850.000.0005	Salary	Salary
Victory-Kosinski, Kaytlynn R	Pay 01	Salary	Salary	Statewide 911	Statewide 911	1,686.58	4900.11212.000.0303	Salary	Salary
York, Jennifer B	Pay 01	Salary	Salary	Commissioners	Commissioners	112.06	1000.11029.000.0201	Salary	Salary
York, Jennifer B	Pay 01	Salary	Salary	Commissioners	Commissioners	2,801.35	9144.11522.000.0235	Salary	Salary
Dossett, Laura R	Pay 01	Salary	Salary	Commissioners	Commissioners	1,813.54	1000.11258.000.0068	Salary	Salary
Bushong, Cynthia D	Pay 01	Part Time	Part Time	Commissioners	Commissioners	382.19	1000.11200.000.0007	Salary	Salary
Bushong, Cynthia D	Pay 02	Salary	Salary	HD	HD	1,234.62	1168.11220.000.0610	Salary	Salary
Martin, Donald D	Pay 01	Salary	Salary	Highway	Highway	351.68	1173.11090.000.0529	Salary	Salary
Martin, Donald D	Pay 01	Salary	Salary	Highway	Highway	1,657.90	1176.11075.000.0529	Salary	Salary
Stonebraker, Ashley M	Pay 01	Salary	Salary	Commissioners	Commissioners	1,244.88	1000.11600.000.0001	Salary	Salary
Roberts, John R	Pay 01	Salary	Salary	HD	HD	750.00	8109.11105.000.0610	Salary	Salary

02252022payroll

Employee Name	Pay Record	Current Pay Group	History Pay Group	Current Benefit Group	History Benefit Group	Amount	Budget Account Code	Current Pay Type	History Pay Type
Ellis, Joseph M	Pay 01	Salary	Salary	Commissioners	Commissioners	689.50	1000.11112.000.0012	Salary	Salary
Michael, Dakota T	Pay 01	Salary	Salary	Highway	Highway	2,091.00	1176.11018.000.0529	Salary	Salary
Michael, Dakota T	Pay 01	Salary	Salary	Highway	Highway	1,587.84	1176.11021.000.0529	Salary	Salary
Little, Lauren R	Pay 01	Salary	Salary	Commissioners	Commissioners	196.40	1000.11021.000.0380	Salary	Salary
Little, Lauren R	Pay 01	Salary	Salary	Commissioners	Commissioners	1,375.00	1000.11495.000.0380	Salary	Salary
Meadows, Mary J	Pay 01	Salary	Salary	Commissioners	Commissioners	1,757.85	1224.11308.000.0008	Salary	Salary
Cevela, Jamie L	Pay 01	Salary	Salary	Follow the Fund	Follow the Fund	1,375.00	9131.11241.000.0005	Salary	Salary
Custer, Lena K	Pay 01	Salary	Salary	Commissioners	Commissioners	1,768.77	1000.11300.000.0001	Salary	Salary
Roe, Becky S	Pay 01	Salary	Salary	Commissioners	Commissioners	1,040.81	1000.11393.000.0380	Salary	Salary
Herron, Amber L	Pay 01	Salary	Salary	Highway	Highway	2,185.42	1176.11159.000.0529	Salary	Salary
Kirby, Elizabeth L	Pay 01	Salary	Salary	CCC 1222	CCC 1222	80.52	1222.11021.000.0303	Salary	Salary
Kirby, Elizabeth L	Pay 01	Salary	Salary	CCC 1222	CCC 1222	2,089.69	1222.11404.000.0303	Salary	Salary
Crull, Kevin M	Pay 01	Salary	Salary	Commissioners	Commissioners	664.24	1170.11021.000.0005	Salary	Salary
Crull, Kevin M	Pay 01	Salary	Salary	Commissioners	Commissioners	2,488.46	1170.11934.000.0005	Salary	Salary
Donaldson, Steven B	Pay 01	Salary	Salary	Commissioners	Commissioners	4,613.96	1000.11421.000.0271	Salary	Salary
Morales Gutierrez, Sinahi U	Pay 01	Salary	Salary	Statewide 911	Statewide 911	122.32	4900.11021.000.0303	Salary	Salary
Morales Gutierrez, Sinahi U	Pay 01	Salary	Salary	Statewide 911	Statewide 911	1,630.69	4900.11413.000.0303	Salary	Salary
Phillips, Monica D	Pay 01	Salary	Salary	Commissioners	Commissioners	1,403.85	1000.11439.000.0379	Salary	Salary
Villalpando, Lindsey A	Pay 01	Salary	Salary	Commissioners	Commissioners	2,390.85	1000.11273.000.0235	Salary	Salary
Kadinger, Matthew D	Pay 01	Salary	Salary	Commissioners	Commissioners	270.05	1000.11021.000.0380	Salary	Salary
Kadinger, Matthew D	Pay 01	Salary	Salary	Commissioners	Commissioners	1,375.00	1000.11293.000.0380	Salary	Salary
Punke, Deric L	Pay 01	Salary	Salary	Commissioners	Commissioners	1,986.54	1170.11024.000.0005	Salary	Salary
Miller, Ethan A	Pay 01	Salary	Salary	Commissioners	Commissioners	1,375.00	1000.11280.000.0380	Salary	Salary
Kiger, Layton T	Pay 01	Salary	Salary	Commissioners	Commissioners	1,375.00	1000.11488.000.0380	Salary	Salary
Lowe, Albert L	Pay 01	Salary	Salary	Highway	Highway	170.46	1176.11021.000.0529	Salary	Salary
Lowe, Albert L	Pay 01	Salary	Salary	Highway	Highway	2,272.88	1176.11641.000.0529	Salary	Salary
Barth, Daniel S	Pay 01	Salary	Salary	Commissioners	Commissioners	28.65	1000.11021.000.0379	Salary	Salary
Barth, Daniel S	Pay 01	Salary	Salary	Commissioners	Commissioners	1,432.69	1000.11239.000.0379	Salary	Salary
Cochran, Hannah R	Pay 01	Salary	Salary	Commissioners	Commissioners	2,250.54	9178.11213.000.0235	Salary	Salary
Bickel, Mark M	Pay 01	Salary	Salary	Commissioners	Commissioners	3,185.96	1000.11229.000.0235	Salary	Salary
Cox, Nancy L	Pay 01	Salary	Salary	Commissioners	Commissioners	1,562.62	1000.11300.000.0003	Salary	Salary
Eads, Hunter C	Pay 01	Salary	Salary	Commissioners	Commissioners	184.12	1000.11021.000.0380	Salary	Salary
Eads, Hunter C	Pay 01	Salary	Salary	Commissioners	Commissioners	1,375.00	1000.11501.000.0380	Salary	Salary
Davis, Michael D	Pay 01	Salary	Salary	Commissioners	Commissioners	1,961.54	1000.11105.000.0753	Salary	Salary
Minor, Jeremy K	Pay 01	Salary	Salary	Commissioners	Commissioners	2,211.54	1170.11507.000.0005	Salary	Salary
Mellish, Thomas J	Pay 01	Salary	Salary	Commissioners	Commissioners	192.31	1000.11261.000.0061	Salary	Salary
Rivera, Sara E	Pay 01	Salary	Salary	HD	HD	1,576.92	1159.11309.000.0610	Salary	Salary

02252022payroll

Employee Name	Pay Record	Current Pay Group	History Pay Group	Current Benefit Group	History Benefit Group	Amount	Budget Account Code	Current Pay Type	History Pay Type
Stephens, William C	Pay 01	Salary	Salary	Highway	Highway	1,714.65	1176.11019.000.0529	Salary	Salary
Stephens, William C	Pay 01	Salary	Salary	Highway	Highway	723.35	1176.11021.000.0529	Salary	Salary
Waltz, Rita E	Pay 01	Part Time	Part Time	HD	HD	450.00	1206.11218.000.0610	Hourly	Hourly
Brown, Brittany A	Pay 01	Salary	Salary	Commissioners	Commissioners	134.14	1000.11021.000.0380	Salary	Salary
Brown, Brittany A	Pay 01	Salary	Salary	Commissioners	Commissioners	1,490.38	1000.11485.000.0380	Salary	Salary
Surber, Aaron S	Pay 01	Salary	Salary	Highway	Highway	1,575.38	1176.11009.000.0529	Salary	Salary
Brown, Christian C	Pay 01	Salary	Salary	Commissioners	Commissioners	163.08	1000.11021.000.0380	Salary	Salary
Brown, Christian C	Pay 01	Salary	Salary	Commissioners	Commissioners	2,038.46	1000.11480.000.0380	Salary	Salary
Gooding, Beth A	Pay 01	Salary	Salary	Commissioners	Commissioners	1,082.85	1000.11253.000.0380	Salary	Salary
Taylor, Michael G	Pay 01	Salary	Salary	Commissioners	Commissioners	341.40	1170.11021.000.0005	Salary	Salary
Taylor, Michael G	Pay 01	Salary	Salary	Commissioners	Commissioners	2,510.77	1170.11937.000.0005	Salary	Salary
Carrell, Henry W	Pay 01	Salary	Salary	Commissioners	Commissioners	1,667.58	1000.11733.000.0380	Salary	Salary
Conrad, Carolyn S	Pay 01	Salary	Salary	Commissioners	Commissioners	1,593.04	1000.11502.000.0232	Salary	Salary
Greene, Paula L	Pay 01	Salary	Salary	Commissioners	Commissioners	1,403.85	1000.11493.000.0380	Salary	Salary
Miller, Farren M	Pay 01	Salary	Salary	Commissioners	Commissioners	79.66	1000.11029.000.0201	Salary	Salary
Miller, Farren M	Pay 01	Salary	Salary	Commissioners	Commissioners	1,991.31	9178.11524.000.0235	Salary	Salary
Taylor, Greg L	Pay 01	Salary	Salary	Commissioners	Commissioners	68.85	1000.11021.000.0313	Salary	Salary
Taylor, Greg L	Pay 01	Salary	Salary	Commissioners	Commissioners	1,224.00	1000.11734.000.0313	Salary	Salary
Douglas, Scott K	Pay 01	Salary	Salary	HD	HD	1,153.85	1159.11162.000.0610	Salary	Salary
Needham, Michael R	Pay 01	Salary	Salary	Commissioners	Commissioners	3,861.50	1170.11175.000.0005	Salary	Salary
Bonwell, David M	Pay 01	Salary	Salary	Commissioners	Commissioners	2,475.92	1000.11732.000.0312	Salary	Salary
Kersey, Michael T	Pay 01	Salary	Salary	Commissioners	Commissioners	2,510.77	1170.11200.000.0005	Salary	Salary
French, Aaron D	Pay 01	Salary	Salary	Commissioners	Commissioners	470.63	1170.11021.000.0005	Salary	Salary
French, Aaron D	Pay 01	Salary	Salary	Commissioners	Commissioners	2,510.77	1170.11022.000.0005	Salary	Salary
Wolf, James M	Pay 01	Salary	Salary	Commissioners	Commissioners	576.92	1000.11138.000.0308	Salary	Salary
Sutherlin, Kirsten M	Pay 01	Salary	Salary	Commissioners	Commissioners	1,295.23	1000.11209.000.0235	Salary	Salary
Halle, Cheryl D	Pay 01	Salary	Salary	Commissioners	Commissioners	1,743.15	1000.11409.000.0009	Salary	Salary
Latzke, Kristen C	Pay 01	Salary	Salary	Commissioners	Commissioners	1,730.77	1000.11575.000.0750	Salary	Salary
Alenduff, Brandon R	Pay 01	Salary	Salary	Commissioners	Commissioners	171.90	1000.11021.000.0380	Salary	Salary
Alenduff, Brandon R	Pay 01	Salary	Salary	Commissioners	Commissioners	1,432.69	1000.11236.000.0380	Salary	Salary
Herron, Rhonda L	Pay 01	Salary	Salary	Commissioners	Commissioners	1,498.77	1000.11602.000.0002	Salary	Salary
Booth, Gary D	Pay 01	Salary	Salary	Commissioners	Commissioners	192.31	1000.11261.000.0061	Salary	Salary
Powell, Daniel E	Pay 01	Salary	Salary	Highway	Highway	411.78	1173.11090.000.0529	Salary	Salary
Powell, Daniel E	Pay 01	Salary	Salary	Highway	Highway	893.97	1176.11021.000.0529	Salary	Salary
Powell, Daniel E	Pay 01	Salary	Salary	Highway	Highway	1,322.03	1176.11076.000.0529	Salary	Salary
Bentley, Jennifer J	Pay 01	Salary	Salary	Commissioners	Commissioners	1,815.69	1189.11100.000.0004	Salary	Salary
Cornett, Alexander J	Pay 01	Salary	Salary	Highway	Highway	1,626.12	1176.11011.000.0529	Salary	Salary
Cornett, Alexander J	Pay 01	Salary	Salary	Highway	Highway	472.58	1176.11021.000.0529	Salary	Salary

02252022payroll

Employee Name	Pay Record	Current Pay Group	History Pay Group	Current Benefit Group	History Benefit Group	Amount	Budget Account Code	Current Pay Type	History Pay Type
Nine, Mercedes E	Pay 01	Salary	Salary	Commissioners	Commissioners	1,403.85	1000.11838.000.0380	Salary	Salary
Shaw, Devin J	Pay 01	Salary	Salary	Commissioners	Commissioners	540.10	1000.11021.000.0380	Salary	Salary
Shaw, Devin J	Pay 01	Salary	Salary	Commissioners	Commissioners	1,375.00	1000.11352.000.0380	Salary	Salary
Stull, James D	Pay 01	Salary	Salary	Highway	Highway	376.18	1173.11090.000.0529	Salary	Salary
Stull, James D	Pay 01	Salary	Salary	Highway	Highway	299.77	1176.11021.000.0529	Salary	Salary
Stull, James D	Pay 01	Salary	Salary	Highway	Highway	1,504.74	1176.11071.000.0529	Salary	Salary
Davidson, Mark A	Pay 01	Salary	Salary	Commissioners	Commissioners	192.31	1000.11261.000.0061	Salary	Salary
Williamson, Lindsay J	Pay 01	Salary	Salary	Commissioners	Commissioners	1,276.04	1000.11159.000.0011	Salary	Salary
Rivers, Jennifer J	Pay 01	Salary	Salary	Commissioners	Commissioners	1,569.23	1000.11113.000.0753	Salary	Salary
Harrington, Shari L	Pay 01	Salary	Salary	Commissioners	Commissioners	2,125.31	1000.11095.000.9655	Salary	Salary
Walsh, Todd P	Pay 01	Salary	Salary	Commissioners	Commissioners	85.30	1170.11021.000.0005	Salary	Salary
Walsh, Todd P	Pay 01	Salary	Salary	Commissioners	Commissioners	2,311.54	1170.11938.000.0005	Salary	Salary
Haslam, Brittany R	Pay 01	Salary	Salary	CCC 1222	CCC 1222	1,715.42	1222.11212.000.0303	Salary	Salary
Byers, Mindy K	Pay 01	Salary	Salary	Commissioners	Commissioners	2,140.54	1000.11300.000.0002	Salary	Salary
Grayson, Peggy S	Pay 01	Salary	Salary	Commissioners	Commissioners	1,849.27	1224.11300.000.0008	Salary	Salary
Jenkins Jr, Rodney L	Pay 01	Salary	Salary	Commissioners	Commissioners	369.92	1170.11021.000.0005	Salary	Salary
Jenkins Jr, Rodney L	Pay 01	Salary	Salary	Commissioners	Commissioners	2,589.23	1170.11315.000.0005	Salary	Salary
Myers, Laren E	Pay 01	Salary	Salary	Commissioners	Commissioners	1,629.35	1170.11975.000.0005	Salary	Salary
Cerda, Jonathan	Pay 01	Salary	Salary	Commissioners	Commissioners	1,432.69	1000.11500.000.0380	Salary	Salary
Lazell, Lula D	Pay 01	Salary	Salary	Commissioners	Commissioners	121.30	1000.11021.000.0380	Salary	Salary
Lazell, Lula D	Pay 01	Salary	Salary	Commissioners	Commissioners	1,294.12	1000.11243.000.0380	Salary	Salary
323						428,005.63			

2-28-22 Meeting Minutes

Sunday, March 6, 2022 4:36 PM

**MINUTES
MONTGOMERY COUNTY COMMISSIONER MEETING
MONDAY, FEBRUARY 28, 2022**

The Montgomery County Commissioners met in regular session on Monday, February 28, 2022 at 8:00 am at the Montgomery County Courthouse, 100 E. Main Street – Room 103, Crawfordsville, Indiana.

CALL TO ORDER

On call of the roll, the members of the Board were shown to be present as follows: President John E. Frey; Vice President James D. Fulwider and Commissioner Dan Guard.

Also present: County Attorney Dan Taylor; County Administrator Tom Klein; Auditor Jennifer Andel; Building Administrator Marc Bonwell; Sheriff Ryan Needham; Deputy Highway Director Jake Lough; County Engineer James Peck; Treasurer Heather Laffoon; Chief Probation Office Andria Giegle; Health Administrator Amber Reed; and Commissioners Executive Assistant Lori Dossett.

PLEDGE & PRAYER

Board President Commissioner John E. Frey led the pledge of allegiance and Commissioner Guard led the prayer.

CONSENT AGENDA

Approval of Claims: February 28, 2022 to March 14, 2022

Accounts Payable: \$2,872,331.78

Payroll Claims: \$428,005.63

Approval of Minutes: February 14, 2022

2021 Annual Solid Waste Management District Report

Solid Waste Districts are required to submit an annual report to the County Commissioners before March 1, 2022.

Commissioner Guard moved to approve the consent agenda. Seconded by Commissioner Fulwider. Motion carried 3-0 votes in favor.

Public Hearing: Petition to Vacate Portion of Old Oak Hill Road filed by Robert Hudson

Commissioner Frey opened the public hearing at 8:01 am.

Resident Cindy McComb, 102 W Old Oak Hill Road appeared and stated an opposition against vacating the right-of-way. Mrs. McComb stated they have lived there since 1994 and they use the road themselves and the road leads to Oak Hill Cemetery. They use the road all of the time as a cut through to Oak Hill Road.

Commissioner Frey hearing no further public comment, closed the public hearing at 8:06 am.

Commissioner Frey moved to deny the vacation request of Old Oak Hill Road. Seconded by Commissioner Guard. Motion carried 3-0 votes in favor.

Public Hearing: Re-Establishment of Cumulative Capital Development Fund Rate

Each year, the Board of Commissioners must re-establish the Cumulative Capital Development Fund and its tax rate of .0333 per \$100 of Assessed Value. The Cumulative Capital Development Fund may be used for expenses related to capital projects such as construction or repair of public buildings, improvements in the rights of way or sidewalks, purchase of vehicles and purchase of information technology.

Commissioner Frey opened the public hearing at 8:10 am

Hearing no public comment Commissioner Frey closed the public hearing at 8:10 am

Commissioner Fulwider moved to approve Ordinance 2022-6 Re-Establishment of Cumulative Capital Development Fund. Seconded by Commissioner Guard. Motion carried 3-0 votes in favor.

Public Hearing: Re-Establishment of Cumulative Bridge Fund

Each year, the Board of Commissioners must re-establish the Cumulative Bridge Development Fund and its tax rate of .075 per \$100 of Assessed Value. The Cumulative Bridge Fund may be used for expenses related to the construction and repair of bridges.

Commissioner Frey opened the public hearing at 8:11 am.

Hearing no public comment, Commissioner Frey closed the public hearing at 8:11 am.

Commissioner Guard moved to approve Ordinance 2022-7 Re-Establishing the Cumulative Bridge Fund.

Seconded by Commissionr Fulwider. Motion carried 3-0 votes in favor.

NEW BUSINESS

Create Community Development Corporation Agreement - Envoy

Attorney Taylor requested that the Commissioners table the Create Community Development Corporation item today. The terms have not been negotiated and the RDC will need to approve the agreement before the Commissioners. *Commissioner Fulwider moved to table the Create Community Development Corporation item. Seconded by Commission Guard. Motion carried 3-0 votes in favor.*

County Health Insurance: COVID-19 OTC Test Plan Resolution

County Administrator Tom Klein stated GPA is proposing three options for consideration. For ease of administration for the employer and ease of access for the member, most companies will elect Option 3 that arranges for coverage with the PBM.

- * Option 1: Plan pays 100% with no limits on quantity or reimbursement amount. It would require the submission of a claim for reimbursement and the plan would pay the amount on the proof of purchase.

- * Option 2: Plan requires the member to purchase the test, then be reimbursed by the plan. Plan pays 100% of the proof of purchase amount up to a maximum of 8 test per Covered Person per month for those tests purchased without a prescription.

- * Option 3: Plan arranges with its PBM to provide the OTC test through the drug card at 100% therefore not requiring any out-of-pocket cost for the member up front. OTC Test are limited to 8 test per Covered Person per month. For those OTC test not purchased through the drug card, the plan will reimburse the member the lesser of the actual cost of the test or \$12 per test for those tests purchased without a prescription.

Commissioner Fulwider moved to approve Option 3 with the drug card paying 100% of the cost of up to 8 tests per covered person per month. Seconded by Commissioner Guard. Motion carried 3-0 votes in favor.

ORDINANCES

Introduction Ordinance 2022-8: Establishment of 2022 Law Enforcement Training Fund

Montgomery County Sheriff's Department is authorized to use the funds distributed by the Indiana Criminal Justice Institute to conduct law enforcement training, including the purchase of supplies and training materials.

Introduction Ordinance 2022-9: Creating Economic Development Department

Ordinance to establish Economic Development Department and the Board of Commissioners will hire an Economic Development Director. The Director will report to the County Administrator and be the representative authority to all State, regional and national economic development organizations and agencies.

Commissioner Guard moved to suspend the rules to add 2nd Reading of Ordinance 2022-9. Seconded by Commissioner Fulwider. Motion carried 3-0 votes in favor.

2nd Reading: Ordinance 2022-9: Creating Economic Development Department

Commissioner Fulwider. Motion carried 3-0 votes in favor.

2nd Reading: Ordinance 2022-9: Creating Economic Development Department

Commissioner Guard moved to approve Ordinance 2022-9. Seconded by Commissioner Fulwider. Commissioner Frey questioned the next step. Attorney Taylor stated the Commissioners will need to appoint an Economic Development Director. Motion carried 3-0 votes in favor.

2 | Page

Appointment – Economic Development Interim Director & Establish Meeting Dates

Commissioner Frey moved to appoint County Administrator Tom Klein as the Economic Development Director and establish meeting times as the 2nd Tuesday of each month @ 10:00 am. Seconded by Commissioner Guard. Motion carried 3-0 votes in favor.

RESOLUTIONS

Resolution 2022-2: Appointing Emergency Management Director and Approving Employment Agreement

Commissioner Guard moved to approve the 2022 Contract for EMA Director Shari Harrington. Seconded by Commissioner Frey. Motion carried 3-0 votes in favor.

OTHER BUSINESS

County Administrator Tom Klein stated that last week was EMA Week and Engineers Week.

Public meeting for input on the County Emergency Medical Services Study will be held on Monday, March 7, 2022 @ 6:30 pm @ the 4th Floor of the Fusion 54 Building.

The recent Art Auction sold 30 pieces to be donated to the Government Center. Currently approximately 80 pieces have been donated. The estimated move in date to the Government Center is the end of March.

ADJOURNMENT

There being no further business before the Board, Commissioner Guard moved to adjourn. Motion passed 3-0 votes in favor.

Meeting adjourned at 8:20 am.

Minutes prepared by Commissioners Executive Assistant Lori Dossett.

The next regular meeting will be held on Monday, March 14, 2022 @ 8:00 am at the Montgomery County Courthouse.

MONTGOMERY COUNTY BOARD OF COMMISSIONERS:

John E. Frey, Board President

Attest:

Attest:

Jennifer Andel, Auditor

3 | Page

Commissioners Award

Sunday, March 6, 2022 4:31 PM

The Commissioners have established a new award to recognize employees that have provided exceptional service to the County. The Commissioners will present their first awards to employees for exceptional service.

Proclamation: Week of the Young Child

Wednesday, March 02, 2022 1:49 PM

Proclaims the first full week of April as the "Week of the Young Child".

Courthouse Planning Study

Sunday, March 6, 2022 4:28 PM

DLZ will present the results of their planning study to repair the exterior of the Courthouse and remodel the interior of the Courthouse.



Planning Study for the **MONTGOMERY COUNTY** **Courthouse**

Crawfordsville, Indiana

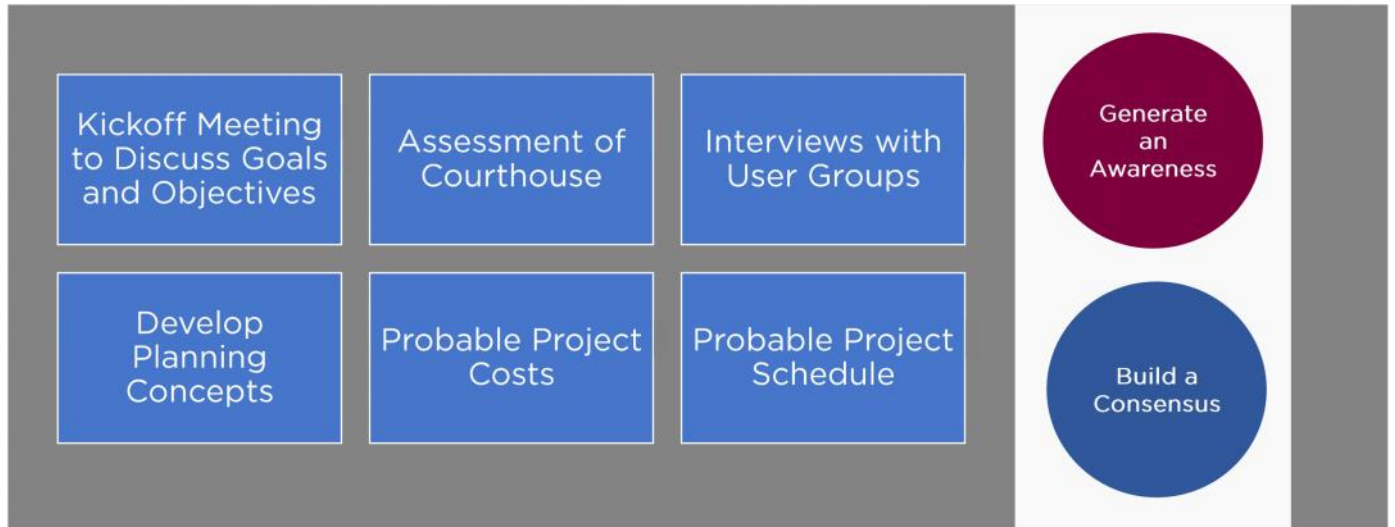
March 14, 2022



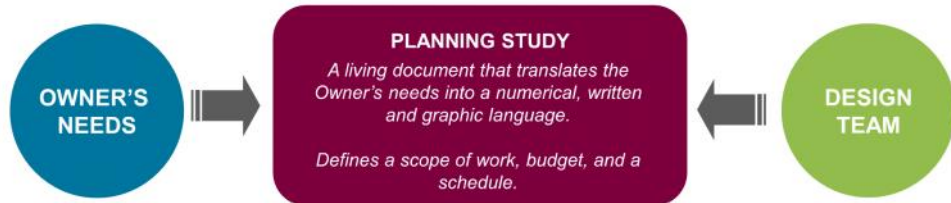
2163.1062.90

INNOVATIVE IDEAS
EXCEPTIONAL DESIGN
UNMATCHED CLIENT SERVICE

PROCESS FOR PLANNING STUDY



PLANNING STUDY



vision
 needs
 ideas
 performance
 quality
 many voices
 fiscal responsibility



project goals
 planning concepts
 space program
 space concepts
 relationships to site
 efficiency
 life cycle cost analysis



PLANNING GOALS

PRIMARY GOALS

- Repurpose spaces in Courthouse once Administrative Annex is completed
- Assessment of Courthouse to determine needs: Interior and Exterior
- Maintain Historic Integrity of Courthouse
- Improve Courts
- Relocate Clerk from Second Floor to Main Level of Courthouse
- Relocate Departments out of Lower Level



MONTGOMERY COUNTY | Courthouse Planning Study | 4



PLANNING GOALS

PRIMARY GOALS

- Identify Attorney-client conference rooms on Second Floor
- Identify / Locate Public and Staff Restrooms on each floor
- Identify / Locate Staff Break Room
- Repurpose spaces for long term successes
- Attorney / Client rooms on each floor



MONTGOMERY COUNTY | Courthouse Planning Study | 5

EXTERIOR ASSESSMENT

WEST ENTRANCE

- Entablature needs rehabilitation / restoration
- Stone head joints need tuckpointing
- Soffit needs patched and repaired
- Replace sealants
- Clean stone



MONTGOMERY COUNTY | Courthouse Planning Study | 6

EXTERIOR ASSESSMENT



West entrance columns
need patched and repaired

Handrails need painted



Low stone wall at west
entrance needs tuckpointing
and sealant at head joints –
some stone pieces have
deteriorated and should be
replaced



West entrance concrete
stair is stained from
where previous handrails
were removed



EXTERIOR ASSESSMENT

ENTRY DOORS

- Replace exterior aluminum entry door system and signage/graphics
- Clean adjacent materials
- Paint surrounding wood
- Sealants need replaced
- Upon replacement, provide vintage appropriate style door system



MONTGOMERY COUNTY | Courthouse Planning Study | 8

EXTERIOR ASSESSMENT

SOUTH ELEVATION

- Entablature needs rehabilitation / restoration
- Stone head joints need tuckpointing
- Soffit at exit needs patched and repaired
- Sealants need replaced
- Clean stone
- Window replacement with vintage appropriate style
- Eave/gutter line is failing - need to conduct a structural analysis



EXTERIOR ASSESSMENT



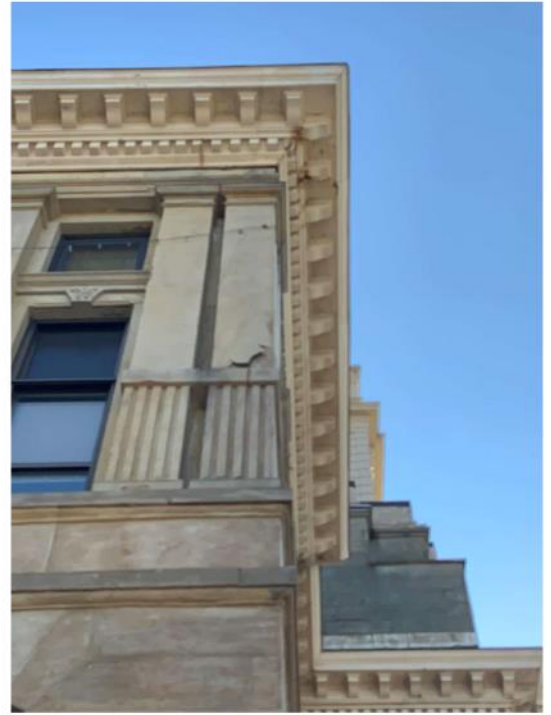
Skim layer over stone is failing and needs replaced
Typical of many locations



MONTGOMERY COUNTY | Courthouse Planning Study | 10

EXTERIOR ASSESSMENT

- Sealants need replaced
- Patch and repair stone



MONTGOMERY COUNTY | Courthouse Planning Study | 11

EXTERIOR ASSESSMENT

DOWNSPOUT

- Over time, the downspout has leaked causing severe water damage
- Replace spalled brick
- Clean and tuckpoint brick / stone
- Sealants need replaced
- Patch and repair floor
- Re-routing the downspout to stay on the outside of the 'porch' would be more appropriate



MONTGOMERY COUNTY | Courthouse Planning Study | 12

EXTERIOR ASSESSMENT

NORTHWEST

- On the ramp, there are several concrete cracks at the vertical posts
- On the roof and the ground surrounding the Courthouse, there is a significant bird issue
- Paint doors and frames
- Mitigate water infiltration
- Patch and repair stone



MONTGOMERY COUNTY | Courthouse Planning Study | 13

EXTERIOR ASSESSMENT: ROOF

MIDLAND ENGINEERING REPORT WAS SUBMITTED ON APRIL 28, 2021:

- “The existing EPDM is in poor condition. All details are failing, and membrane is no longer adhered. We recommend this roof is replaced in the near future.
- The existing slate roof is in fair condition. We recommend having yearly maintenance performed on replacing missing and cracked slates.
- South Facing Elevation: We recommend having a structural engineer evaluate this area. It appears the trusses and decking have shifted. The gutter and cornice have been damaged by the shifting.
- The Asphalt Roof: We recommend having an aluminum coating applied.
- We recommend having an abatement company remove the bird droppings that have built up in the gutter areas. This is a potential safety issue for workers on site.”



INTERIOR ASSESSMENT

- Any renovation or repurpose of spaces needs to maintain the integrity of the historic Courthouse
- Historic materials needs to be salvaged if scope of work requires removal
- Address general finishes, MPE and IT issues in areas being repurposed / renovated
- Key Fobs on Doors
- Remove Holding Cell carpet



MONTGOMERY COUNTY | Courthouse Planning Study | 15

INTERIOR ASSESSMENT

- Mitigate water infiltration
- Patch and repair damaged areas
- Additional room signage and wayfinding signage
- ADA upgrades per prior Study
- Renovate Lower Level
 - Repurpose area
 - Efficient Storage System



MONTGOMERY COUNTY | Courthouse Planning Study | 16

USER GROUP INTERVIEWS: CIRCUIT COURT

PRIMARY GOALS

- Overall Court and Administrative Area space works well
- Difficult for Public to communicate with Court Staff – also need a counter with door and window for separation – or create a space near the Court entry
- Overall administrative area finishes should be upgraded
- Jury Room needs to be larger with restrooms replacement
- Need to eliminate access from Clerk area to Circuit Court



USER GROUP INTERVIEWS: SUPERIOR COURT I

PRIMARY GOALS

- Over Court and Administrative Area works well
- Need to separate Jury Box access
- Jury Room needs to be larger with restrooms upgraded



MONTGOMERY COUNTY | Courthouse Planning Study | 18



USER GROUP INTERVIEWS: SUPERIOR COURT II

PRIMARY GOALS

- Relocate Superior Court II to Main Level of Courthouse
- Repurpose Superior Court II for a New Magistrate
- Jury Room needs to be larger with restrooms upgraded
- Renovate relocated area for Court and Administration



MONTGOMERY COUNTY | Courthouse Planning Study | 19

USER GROUP INTERVIEWS: MAGISTRATE

PRIMARY GOALS

- Relocate Superior Court II to Main Level of Courthouse
- Repurpose Superior Court II for Magistrate Area
- For Magistrate Administrative Area, develop a more efficient and secure reception area
- Admin space for Magistrate, Recorder, and Data Entry
- Review existing Courtroom with respect to occupancy and path of egress
- Replace existing Judge's bench and gallery seating
- Upgrade existing finishes and Audio/Video Recording





USER GROUP INTERVIEWS: CLERK

PRIMARY GOALS

- Clerk + (7) Full Time Staff is correct staffing
- Relocate Clerk to Main Level – Large Volume of Visitors
 - Renovate space to meet the needs of the Clerk including new finishes, mechanical, electrical, and IT
- Relocate Child Support and Micrographs from Lower Level
- All Electronic Filing – Reduces Storage Needs
 - Lower Level will be for Courthouse Storage
- Shared Courthouse Conference Room
- Separate Office for Clerk and a Secure Safe are required
- Researcher's Table with Terminal required at Counter area
- Storage can be located in the Lower Level

MONTGOMERY COUNTY | Courthouse Planning Study | 21



USER GROUP INTERVIEWS: PROSECUTOR

PRIMARY GOALS

- Nine Offices: Prosecutor, Chief Deputy, 3 Deputies, 3 Paralegals, 1 Title IV
- Minimum of (2) Workstations in Open Area – need improved reception area with more security
- Need Conference Room for 12
- Upgrade finishes in the Area
- Should plan for future growth (staff)
- Utilize Lower Level for Storage – prefer to maintain in Prosecutor Office, but not adequate space



MONTGOMERY COUNTY | Courthouse Planning Study | 22



USER GROUP INTERVIEWS: TITLE IV-D

PRIMARY GOALS

- Provide space for:
 - 5 Caseworkers in offices
 - Administrative Assistant
 - Assistant Administrator
 - Part Time Staff
 - 2 Deputy Prosecutors
- Secured/controlled public counter with visitor seating for 4
- Exam/Lab for DNA sampling
- Conference Room for 10
- Secured storage and general supplies



MECHANICAL ASSESSMENT

- Major HVAC equipment replaced around 2010-2011
- Boilers in fair condition, no known issues
- Chillers in fair condition, no known issues
 - Remote evaporator, outdoor air-cooled condensing unit
 - Refrigerant monitor & exhaust in mechanical room
- HVAC Pumps in fair condition
- Facility maintains chemical treatment on HVAC water systems



MONTGOMERY COUNTY | Courthouse Planning Study | 24



MECHANICAL ASSESSMENT

- HVAC Direct Digital Controls installed approximately 10 years ago
- Console-type four-pipe Fan Coil Units (FCU) serve most spaces
 - No known issues with units
 - Some have issues with control valves
- Areas served by FCUs do not have outside ventilation air
 - Renovated Areas may require ventilation air
- Lower Level Storage concern with humidity issue
- Courtrooms are served by modular, forced air units
 - Units in fair condition, no known issues



MONTGOMERY COUNTY | Courthouse Planning Study | 25

PLUMBING ASSESSMENT

- Electric Domestic Water Heater in good condition
- Hot water return pump in fair condition
- Thermostatic Mixing valves shows signs of corrosion and should be replaced
- Plumbing fixtures in restrooms are old
 - Recommend replacing faucets/flush valves at a minimum
- Replace single height water cooler with dual height, ADA compliant unit
- Building does not have a water softener
- No reported issues with water or sanitary piping



MONTGOMERY COUNTY | Courthouse Planning Study | 26

FIRE PROTECTION ASSESSMENT

- Building is fully sprinklered
- Office and courtroom areas served by a wet-pipe system
- Attic served by a dry pipe system
- Building does not have a fire pump
- No reported issues with the existing system
- Lower Level Storage concern with wet pipe sprinkler system
 - Could damage records



MONTGOMERY COUNTY | Courthouse Planning Study | 27

ELECTRICAL ASSESSMENT

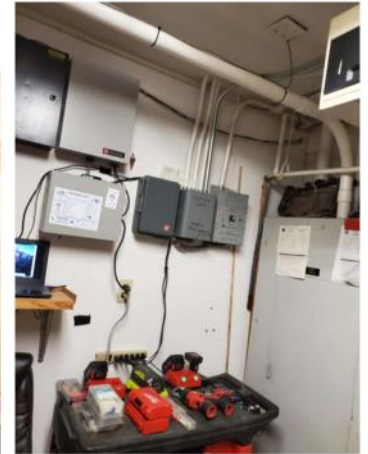
- All Light fixtures replaced around 2010 by guaranteed energy savings completed by Amersco
- Recommend changing Light fixtures from fluorescent to LED
- Lighting controls are all manual
 - Recommend replacing with automatic controls
- Replace exit lights
- No reported issues with building Fire Alarm System
- Fire Alarm Control Panel replaced around 2020
- Vendor owned WiFi
- Building current uses Plain old telephone system copper lines
 - Staff reported the building will be switching over to PPX/Voice over IP (VOIP) system



MONTGOMERY COUNTY | Courthouse Planning Study | 28

ELECTRICAL ASSESSMENT

- Staff reported electrical panels are full, with minimal spare circuits available
- Staff reported Fan Coil Units share branch circuitry. Circuit overcurrent protection has been modified to 30A to prevent nuisance tripping.
 - NOTE: Violation of NFPA 70-2008 (National Electrical Code) article 240.4D(5)
 - Recommend re-circuiting Fan Coil Units to allow branch circuit conductors to be properly protected
- Building does not have a Generator
- Building has two different access control systems: Stanley (old) and SAS (newer)
- Staff reported Stanley system head-end currently resides on a Windows XP system
- Recommend converting building to newer (SAS) system



MONTGOMERY COUNTY | Courthouse Planning Study | 29

USER GROUP INTERVIEWS: SECURITY

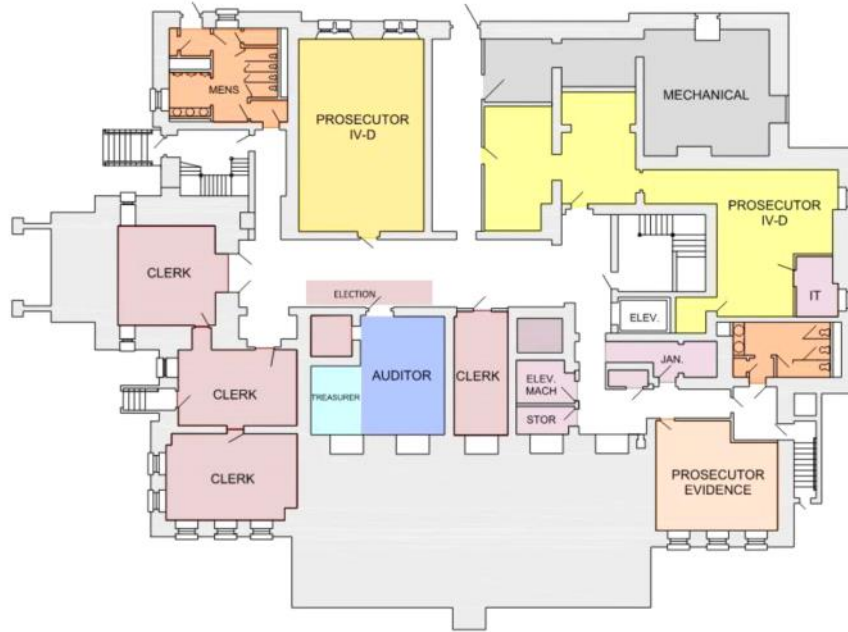
PRIMARY GOALS

- Court Security has adequate administrative space
- Replace floor materials at the Holding Cell area
- Additional exterior cameras needed
- Need public restrooms need security check



MONTGOMERY COUNTY | Courthouse Planning Study | 30

LOWER FLOOR EXISTING PLAN



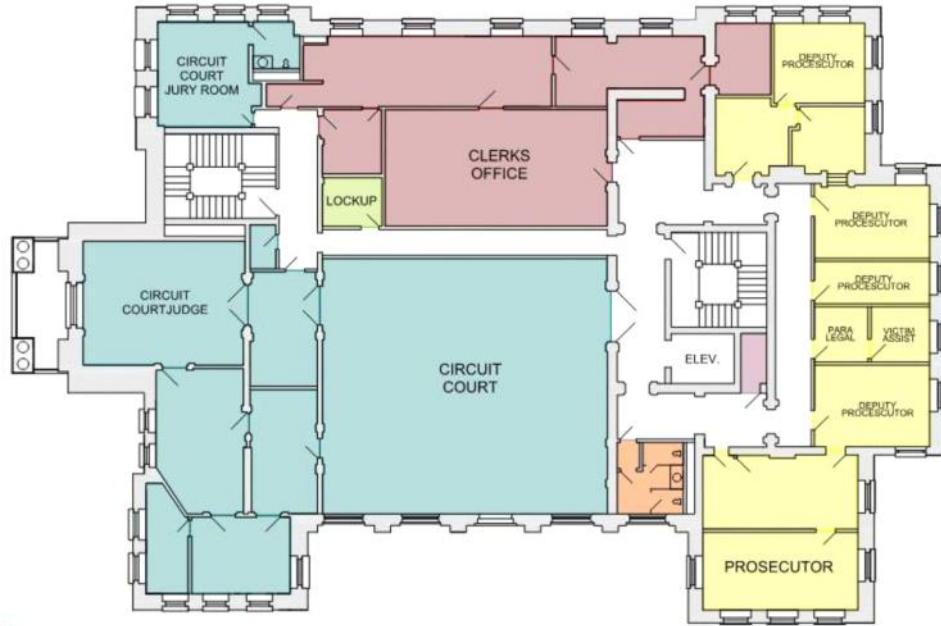
MONTGOMERY COUNTY | Courthouse Planning Study | 31

MAIN FLOOR EXISTING PLAN



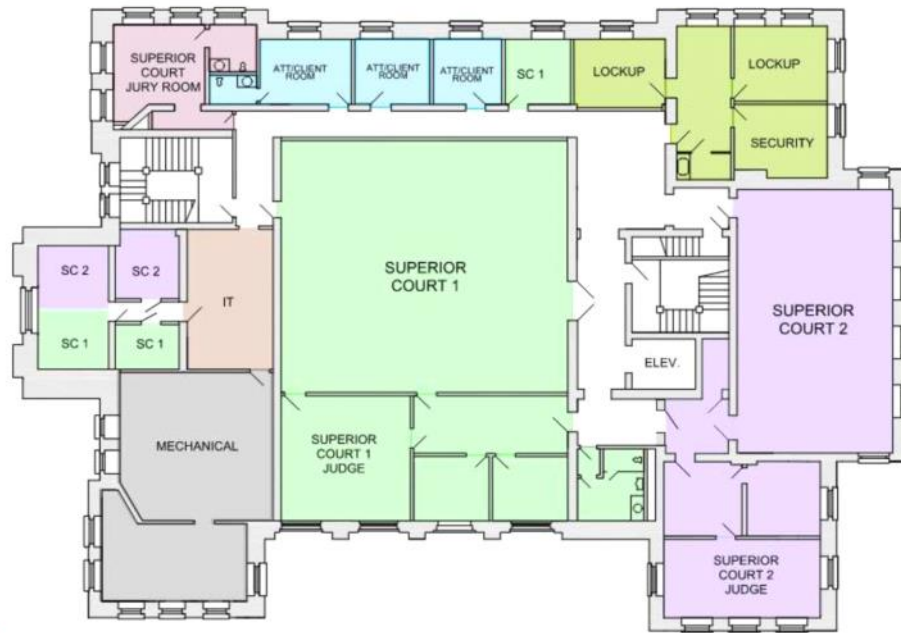
MONTGOMERY COUNTY | Courthouse Planning Study | 32

SECOND FLOOR EXISTING PLAN



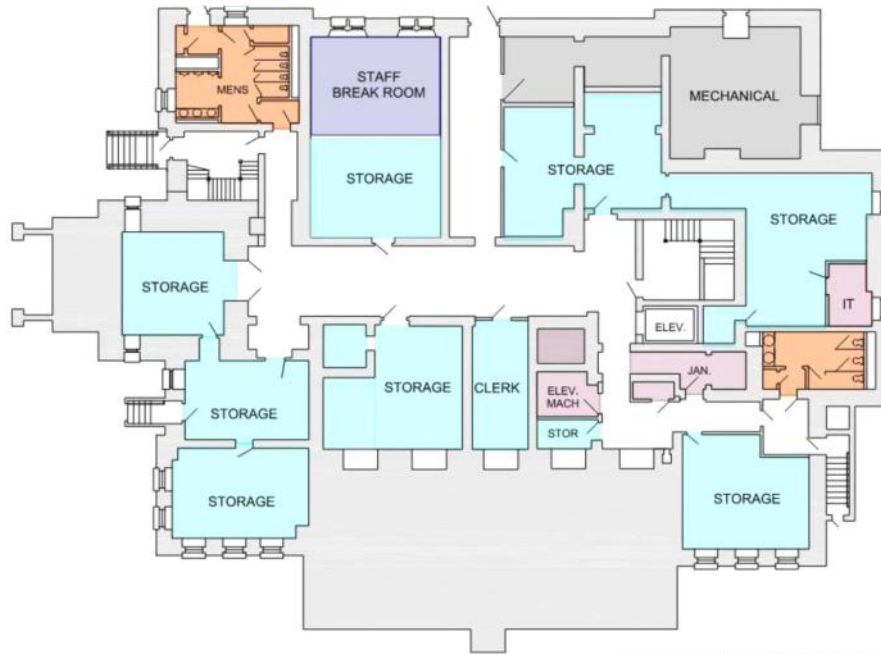
MONTGOMERY COUNTY | Courthouse Planning Study | 33

THIRD FLOOR EXISTING PLAN



MONTGOMERY COUNTY | Courthouse Planning Study | 34

LOWER FLOOR PLANNING CONCEPT



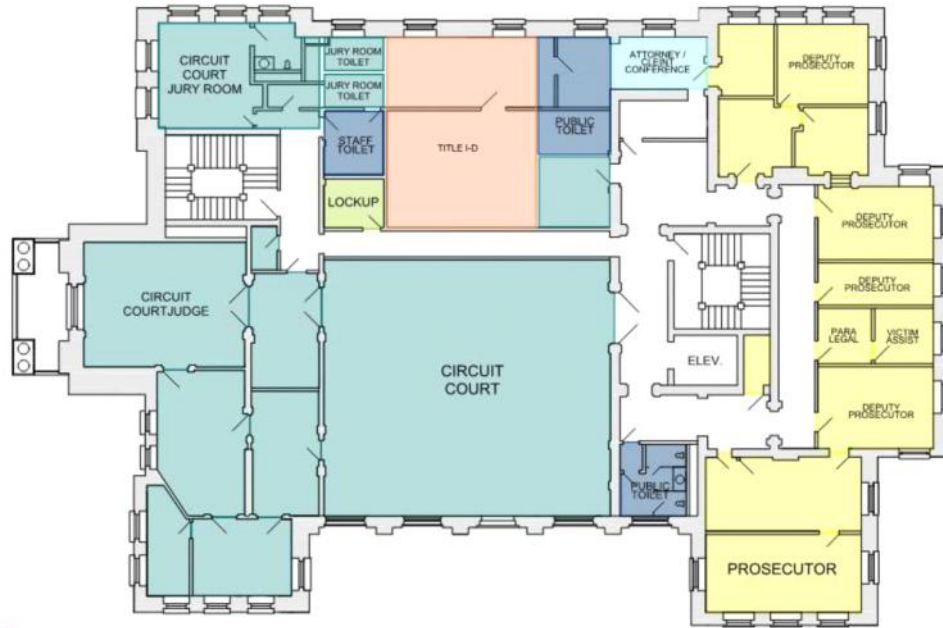
MONTGOMERY COUNTY | Courthouse Planning Study | 35

MAIN FLOOR PLANNING CONCEPT



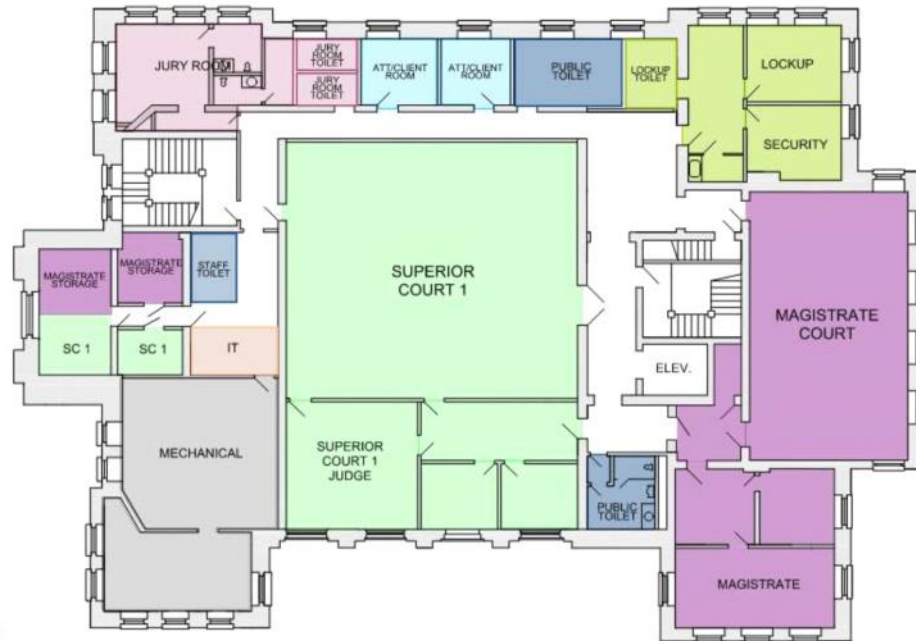
MONTGOMERY COUNTY | Courthouse Planning Study | 36

SECOND FLOOR PLANNING CONCEPT



MONTGOMERY COUNTY | Courthouse Planning Study | 37

THIRD FLOOR PLANNING CONCEPT



MONTGOMERY COUNTY | Courthouse Planning Study | 38

COST INDEX - Inflation



Cost Index

Turner’s Building Cost Index: High Level of Construction Activity Continues to Stretch Skilled Labor Availability

Turner Building Cost Index—which measures costs in the non-residential building construction market in the United States—has increased to a value of 1230 (100 in base year 1967).

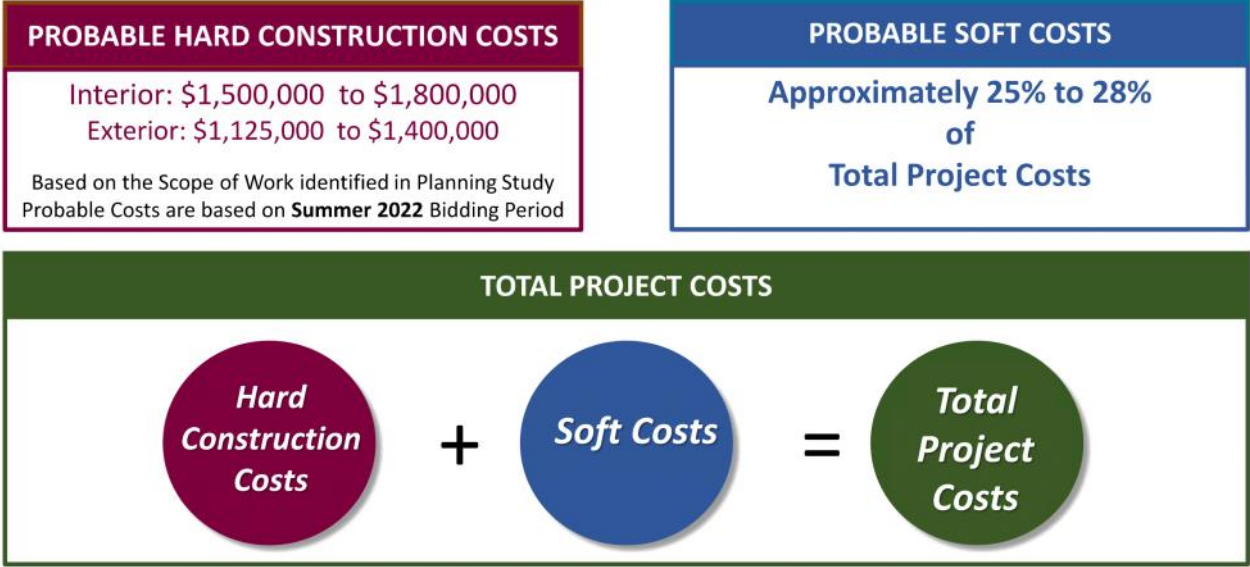
Quarter	Index	% Change
4thQuarter 2021	1230	1.91
3rd Quarter 2021	1207	1.68
2nd Quarter 2021	1187	1.28
1st Quarter 2021	1172	0.09

Turner has prepared the construction cost forecast for more than 80 years. Used widely by the construction industry and Federal and State governments, the building costs and price trends tracked by The Turner Building Cost Index may or may not reflect regional conditions in any given quarter. The Cost Index is determined by several factors considered on a nationwide basis, including labor rates and productivity, material prices and the competitive condition of the marketplace. This index does not necessarily conform to other published indices because others do not generally take all of these factors into account.

Based on the Cost Index and factor for Indiana construction, we estimate 7 - 9% per year construction cost increases over the next 12 months



PROPOSED COSTS – PROJECT



PROPOSED CONSTRUCTION COSTS – INTERIOR

SUPERIOR COURT II on Main Floor

- Includes full renovation for new court room, court administration, jury room, toilet rooms
- Approximately \$350,000 to \$500,000

MAGISTRATE COURT on Third Floor

- Includes full renovation of court room and court administration
- Approximately \$150,000 - \$200,000

CLERK and Title IV-D

- Renovate 1st floor area for Clerk
- Renovate 2nd floor area for Title IV-D
- Approximately \$100,000 to \$150,000

OTHER RENOVATION WORK

- Includes full renovation for new public toilet rooms on each level, staff break room, new staff toilet rooms, renovate / enlarge jury rooms, miscellaneous items
- Approximately \$900,000 to \$950,000

Recommend to include a 10% Construction Contingency for unforeseen conditions



PROPOSED CONSTRUCTION COSTS –

EXTERIOR – Priority One

Approximately \$1,025,000 to \$1,250,000

Stone Repair, Cleaning, Tuckpointing, and Minimal Replacement

- Approximately \$500,000 to \$600,000

Building Sealants

- Approximately \$75,000

Site Wall Repair, Cleaning, Tuckpointing, and Minimal Replacement

- Approximately \$75,000

Entablature Rehabilitation

- Approximately \$300,000 to \$400,000

Repair Water Infiltration

- Approximately \$75,000 to \$100,000

**Recommend to include a 20%
Construction Contingency for
unforeseen conditions**



PROPOSED CONSTRUCTION COSTS – EXTERIOR – Priority Two

Approximately \$100,000 to \$150,000

Replace Storefront Entry / Vestibule Doors

- Approximately \$50,000 to \$75,000

Paint Doors, Frames, Etc.

- Approximately \$50,000 to \$75,000

Costs to be determined:

Roof

- Midland Engineering to provide estimate based on the Roof Study they completed

**Recommend to include a 20%
Construction Contingency for
unforeseen conditions**



PROPOSED SCHEDULE FOR PROJECT

Determine Financing Capabilities and Opportunities



4 - 5 Months



2 Months



8 - 10 Months



MONTGOMERY COUNTY | Courthouse Planning Study | 44

PLANNING STUDY FOR MONTGOMERY COUNTY COURTHOUSE



Building
Assessment
and User
Group
Interviews

Final Report
identifies a
Scope,
Schedule, and
Budget

Generate an
Awareness
and
Build a
Consensus



MONTGOMERY COUNTY | Courthouse Planning Study | 45

Public Defender Contract

Sunday, March 6, 2022 4:30 PM

Public Defender Bryan Donaldson is requesting approval of a contract for attorney Robert Poynter to provide public defender services. The contract amount is \$16,000 with no limit on the number of cases.

Compensation Analysis Contract for EMA-HS Director Position

Sunday, March 6, 2022 4:28 PM

The EMA Advisory Council has recommended that a compensation consultant be hired to conduct a compensation analysis for the EMA-HS Director position.

Staff is recommending that the benefits and compensation advisory firm First Person be hired to conduct the analysis. They have experience with analyzing compensation for County government. The contract amount is \$3,750.

Ordinance 2022-8: Establishment of 2022 Law Enforcement Training Fund

Sunday, March 6, 2022 4:32 PM

Montgomery County Board of Commissioners

Ordinance 2022-8

**AN ORDINANCE CREATING THE
LAW ENFORCEMENT TRAINING GRANT FUND**

Whereas, the Indiana Criminal Justice Institute have announced it will distribute funds to County Sheriff's Departments for lost revenues as a result of the elimination of handgun permit fees,

Whereas, the Montgomery County Sheriff's Department is authorized to use the funds distributed by the Indiana Criminal Justice Institute to conduct law enforcement training, including the purchase of supplies and training materials,

Whereas, this fund will be a non-reverting fund.

Whereas, it is in the best interests of the citizens of Montgomery County, Indiana, to create this new fund.

Therefore, it is therefore ordained as follows:

§ 35.____LAW ENFORCEMENT TRAINING GRANT FUND

- (A) *Source of Funds.* The Montgomery County Board of Commissioners hereby establish the Law Enforcement Training Grant Fund. The fund shall consist of distributions received from the Indiana Criminal Justice Institute for lost revenues from the elimination of handgun permit fees.
- (B) *Use of Funds.* All monies in the Montgomery County Law Enforcement Training Grant Fund to conduct law enforcement training, including the purchase of supplies and training materials.
- (C) *Non-Reverting Fund.* "This is a non-reverting fund. No portion of the monies in this Fund will revert to the Montgomery County General Fund."

It is further ordained that this ordinance shall be effective upon adoption.

It is further ordained that all other provisions of the Montgomery County Code of Ordinances, which are not specifically amended by this ordinance shall remain in full force and effect.

Adopted this _____ day of _____, 2022.

Montgomery County Board of Commissioners:

John E. Frey, President

James D. Fulwider, Vice-President

Dan Guard, Member

Attest:

Jennifer Andel, Auditor

Resolution 2022-3: Declaration of Surplus

Monday, March 07, 2022 10:40 AM

Montgomery County Board of Commissioners

Resolution 2022-3

A RESOLUTION DECLARING PROPERTY AS SURPLUS

WHEREAS, the Montgomery County Probation Department has determined that certain equipment listed on Attachment A is beyond its useful life,

AND WHEREAS, the Probation Department is recommending that the equipment listed on Attachment A of this Resolution be declared as surplus property,

IT IS, THEREFORE, RESOLVED that Montgomery County Board of Commissioners declare the equipment listed on Attachment A as surplus property and authorizes the Probation Department to dispose of the surplus equipment per the requirements of State Law.

THIS RESOLUTION is hereby approved on this 14th day of March, 2022.

MONTGOMERY COUNTY BOARD OF
COMMISSIONERS

John E. Frey, President

James D. Fulwider, Vice President

Dan Guard, Member

Attest:

Jennifer Andel, Auditor

Attachment A 2022 Surplus Items

TV w/Remote Control

Brand:	Toshiba
DVD/VCR	
Serial #	80684273A
Model #	MW20FP1

2 Overhead Projectors

Brand:	Apollo
	3000
Brand:	3M 9100

Overhead transparency films
Overhead transparency frames
Spare light bulb for the Apollo 3000

Space Heater

Brand:	Holmes (broken knob)
--------	----------------------------

Radio / CD Player

Brand:	NextPlay
Color:	Fuschia