

# Agenda

Wednesday, November 9, 2022

5:02 PM

## **AGENDA**

### **MONTGOMERY COUNTY BOARD OF COMMISSIONERS MEETING**

**MONDAY, NOVEMBER 14, 2022**

**8 AM**

**1580 Constitution Row - Room E109**

**Crawfordsville, IN 47933**

**Call to Order: Board President John E. Frey**

**Pledge of Allegiance and Prayer**

#### **Consent Agenda**

Approval of Claims: October 24, 2022 to November 14, 2022

Accounts Payable: \$3,743,048.75

10/21/22 Payroll: \$408,276.46

11/4/22 Payroll: \$400,857.91

Approve Minutes: October 24, 2022

#### **New Business**

2023 County Holiday Schedule

Recommendation for Approval of Highway Department Annual Bids

Health Board Appointment

Stifel Underwriter/Placement Agent Engagement Relating to Potential Municipal Securities

Transaction for Nucor Road Bridge Project Engagement

#### **Ordinances**

Final Reading: Ordinance 2022-33 - Creating the 2023 HMEP Training Grant - \$16,000

Final Reading: Ordinance 2022-34 - 2022 EM-HS/CERT Training Room Grant - \$92,504.43

Final Reading: Ordinance 2022-35 - 2022 Cybersecurity Grant MSCO - \$145,991.28

#### **Resolution**

Resolution 2022-8 - Approving Intergovernmental Cooperation Agreement with the City of Crawfordsville for Emergency Medical Services

#### **Other Business**

#### **Adjournment**

# Agenda Memo

Wednesday, November 9, 2022

5:03 PM

## **AGENDA MEMO**

### **MONTGOMERY COUNTY BOARD OF COMMISSIONERS MEETING**

**MONDAY, NOVEMBER 14, 2022**

**8 AM**

**1580 Constitution Row - Room E109**

**Crawfordsville, IN 47933**

**Call to Order: Board President John E. Frey**

**Pledge of Allegiance and Prayer**

#### **Consent Agenda**

Approval of Claims: October 24, 2022 to November 14, 2022

Accounts Payable: \$3,743,048.75

10/21/22 Payroll: \$408,276.46

11/4/22 Payroll: \$400,857.91

Approve Minutes: October 24, 2022

#### **New Business**

##### **2023 County Holiday Schedule**

*Staff recommends approval of the same 2023 Holiday Schedule adopted by the City of Crawfordsville.*

*New Year's Day-Monday, January 2*

*Martin Luther King, Jr. Day-Monday, January 16*

*President's Day-Monday, February 20*

*Good Friday-Friday, April 7*

*Primary Election Day-Tuesday, May 2*

*Memorial Day-Monday, May 29*

*Juneteenth-Monday, June 19*

*Independence Day-Tuesday, July 4*

*Labor Day-Monday, September 4*

*Election Day-Tuesday, November 7*

*Veteran's Day-Friday, November 10*

*Thanksgiving Day-Thursday, November 23*

*Day after Thanksgiving-Friday, November 24*

*Christmas Day-Monday, December 25*

*Day After Christmas-Tuesday, December 26*

##### **Recommendation for Approval of Highway Department Annual Bids**

*Annual bids were opened at the October 24th Commissioners meeting.*

*Martin-Marietta; Pro Ag Inc.; Stello Signs; Ceres Solutions; Mike Green, Inc.;*

*Newton Oil; Cargil; Asphalt Materials; E-3 Bridge; Morton Salt; Pomp's Tires & Disposal;*

*Putnam County Aggregates; Engineering Aggregates; US Aggregates; Great Lakes Chloride;*

*Rejuv Tech; Korks Dust Control; Co-Alliance; Lincoln Park Stone; and CivilCon. Bids were*

*taken under advisement for review by the Highway Director who will present his recommendation.*

#### **Health Board Appointment**

*Health Administrator Adrienne Northcutt advised there is one opening on the Health Board. The health board met and presented three candidates for the Commissioners to consider: Christine Amadon, Greg Woodsmall, and Kyle Hunt.*

#### **Stifel Underwriter/Placement Agent Engagement Relating to Potential Municipal Securities Transaction for Nucor Road Bridge Project Engagement**

*Preliminary engagement agreement for a potential financing to support the Nucor Road Bridge project. This engagement will satisfy certain regulatory requirements and allow Stifel to begin to work with the County and the County's Financial Consultants Peters Franklin to provide financing, structuring, and market interest rate advice.*

#### **Ordinances**

**Final Reading: Ordinance 2022-33 - Creating the 2023 HMEP Training Grant - \$16,000**

*Project Title: PHMEP-2023-2023 HMEP Confined Space Training.*

**Final Reading: Ordinance 2022-34 - 2022 EM-HS/CERT Training Room Grant - \$92,504.43**

*Project Title: Priority 2022 CERT Program Training Room and Mass Notification System Grant.*

**Final Reading: Ordinance 2022-35 - 2022 Cybersecurity Grant MSCO - \$145,991.28**

*Project Title: Priority Montgomery County 2022 Law Enforcement Cybersecurity Terrorism.*

#### **Resolution**

**Resolution 2022-8 - Approving Interlocal Cooperation Agreement with the City of Crawfordsville for Emergency Medical Services**

# Claims: AP

Wednesday, November 9, 2022

5:03 PM

# Printout

Wednesday, November 9, 2022 5:16 PM

## 10252022-11142022 Docket.xlsx

Invoice	Bank	Check	Payee Name 1	Fund	Fund Desc	Acct	Loc	Loc Desc	Amount	Comment
467	001	035517	A. E. Woodall	1202	Surveyor's Corner Perpetuation	30050	0006	County Surveyor	4441.67	Nov 22 Instrmnt
130405097	001	221195	Aaron French	1191	Riverboat	31123	0068	County Commissioners	50.00	Topline Reimb
Mileage	001	035518	Abby Morgan	1000	General	30001	0011	Cnty Coop Extension Svcs	320.95	Oct 2022
8555	001	035551	Adrian James Jay Sutherlin	1000	General	30500	0068	County Commissioners	598.95	Fertiliz appl
Sept 2022 Wheel/Surtax Dist	001	221183	Alamo Clerk Treasurer	6020	0207 Wheel Tax/Surtax Combined	31200	0002	County Auditor	153.23	
2022-11LITCS	001	221235	Alamo Clerk Treasurer	7330	LIT Local Income Tax	50000	0002	County Auditor	185.00	NOV CERT SHARES
2022-11LITPS	001	221235	Alamo Clerk Treasurer	7331	Lit Public Safety Fund	50000	0002	County Auditor	128.25	NOV LIT PUB SFTY
Jury1012	001	035368	Alvin Lee, Jr.	1000	General	30047	0201	Superior Court #1	15.49	appeared
1N6H-JXGX-6N47	001	221157	Amazon Capital Services,Inc	1181	Plat Book	24201	0002	County Auditor	108.53	Misc supplies
WO 00128258	001	035552	American Eagle Auto Glass	1176	Motor Vehicle Highway	33450	0529	County Highway	332.42	Windshield Rpr
263454	001	035503	American Fam Life Assurance	5100	0300 Payroll Clearing	00018	0000	No Department	1574.74	Oct 2022
Jury1012	001	035369	Amy C. Claycomb	1000	General	30047	0201	Superior Court #1	80.00	served
Jury1012	001	035369	Amy C. Claycomb	1000	General	30046	0201	Superior Court #1	29.85	served
129973383	001	221196	Andria Geigle	1191	Riverboat	31123	0068	County Commissioners	50.00	Topline Reimb
Penn State Receipt	001	221225	Andria Geigle	2100	Supplemental Adult Prob Svcs	30001	0235	Probation	34.60	Popai
26722 Acct 2346	001	035476	Arab	1000	General	30083	0380	Jail	270.00	Oct 2022
26769 Acct 2345	001	035505	Arab	1176	Motor Vehicle Highway	30194	0529	County Highway	88.00	Hwy 20291
2531	001	035477	Arthur's Excavation	2600	Drain Construction/Reconst	65275	0006	County Surveyor	241037.00	Recon Hawkins
10052022	001	035478	Ashley Gillan	1000	General	30083	0380	Jail	150.00	Haircuts
10192022	001	035519	Ashley Gillan	1000	General	30083	0380	Jail	150.00	Haircuts
Parking Receipt	001	221226	Ashley Spolarich	1000	General	33500	0271	Public Defender	20.00	Ment Hlth Sumt
8013300082	001	035506	Asphalt Materials Inc	1173	MVH Restricted Fund	20016	0306	Engineering	32342.11	AE-150
8013300503	001	035506	Asphalt Materials Inc	1173	MVH Restricted Fund	20016	0306	Engineering	22216.89	AE-150
8013300503	001	035506	Asphalt Materials Inc	1173	MVH Restricted Fund	20016	0529	County Highway	8012.00	AE-150
8013300503	001	035506	Asphalt Materials Inc	1169	Local Road And Street	30137	0529	County Highway	2494.82	AE-150
2022 Summer Conference	001	035553	Assoc Of Ind Prosecuting Attys	1000	General	32100	0009	Prosecuting Attorney	450.00	J Moore
849732398	001	035507	At & T	1000	General	30036	0068	County Commissioners	112.40	THRU 10/22/22
849732398	001	035479	At & T Long Distance	1000	General	30036	0068	County Commissioners	97.31	Long Distance
849732398	001	035479	At & T Long Distance	1000	General	30036	0068	County Commissioners	728.42	Long Distance
287290114879X07192022	001	035508	AT&T Mobility	1000	General	30036	9655	Emergency Response	1.25	061222-071122
287290114879X08192022	001	035508	AT&T Mobility	1000	General	30036	9655	Emergency Response	1.25	071122-081122
287283435349X10192022	001	035520	AT&T Mobility	1170	LIT Public Safety-Cnty Share	30017	0005	County Sheriff	10466.12	Aircards/Anten
287319870560X10192022	001	035520	AT&T Mobility	4900	Central Comms Center	30050	0303	Communications Dept (Rad	221.24	MEVO to go
2022 Fines and Forfeitures	001	221182	Auditor of State	7101	1430 Fines & Forfeitures	50000	0001	Clerk of Circuit	12248.50	Fall Remittance
Jury1012	001	035370	Austin R. Swank	1000	General	30047	0201	Superior Court #1	19.41	appeared
20221643	001	035521	Banning Engineering	2600	Drain Construction/Reconst	65172	0006	County Surveyor	1100.00	Through Sept
129480921	001	221197	Barb Feltner	1191	Riverboat	31123	0068	County Commissioners	50.00	Topline Reimb
Jury1012	001	035371	Betty J. Chandler	1000	General	30047	0201	Superior Court #1	15.98	appeared
Election 2022	001	035463	Beverly Perry	1000	General	11314	0104	Election Expense	300.00	Poll Judge
127517	001	035554	Blankenship Auto Care Inc	1170	LIT Public Safety-Cnty Share	30100	0005	County Sheriff	120.53	Oil change
INV1823895	001	221260	Bob Barker Co Inc.	1000	General	20005	0380	Jail	46.64	Toothbrushes
INV1828981	001	221260	Bob Barker Co Inc.	1000	General	20005	0380	Jail	35.88	Toothbrushes
INV1826777	001	221260	Bob Barker Co Inc.	1000	General	20005	0380	Jail	511.60	Undergarments
INV1829705	001	221260	Bob Barker Co Inc.	1000	General	20005	0380	Jail	165.60	Trousers
Jury1012	001	035372	Bradly J. Mills	1000	General	30047	0201	Superior Court #1	105.48	served
Jury1012	001	035372	Bradly J. Mills	1000	General	30046	0201	Superior Court #1	20.00	served

## 10252022-11142022 Docket.xlsx

Invoice	Bank	Check	Payee Name 1	Fund	Fund Desc	Acct	Loc	Loc Desc	Amount	Comment
Jury1012	001	035373	Brenda L. Elmore-Simpson	1000	General	30047	0201	Superior Court #1	15.49	appeared
130466600	001	221198	Brenda Payne	1191	Riverboat	31123	0068	County Commissioners	37.45	Topline Reimb
Jury1012	001	035374	Brian S. Albrecht	1000	General	30047	0201	Superior Court #1	15.49	appeared
2022-11LITCS	001	221236	Brown Township Trustee	7330	LIT Local Income Tax	50000	0002	County Auditor	2612.58	NOV CERT SHARES
98045	001	035522	Butler Fairman & Seufert	1138	Cumulative Capital Development	30192	0068	County Commissioners	4139.50	Aug-Sept 2022
AR69450	001	221175	Cardinal Copier Solutions	1000	General	30016	0202	Superior Court #2	80.65	Copier Lease
127648	001	221227	Cardinal Leasing Inc	4900	Central Comms Center	30050	0303	Communications Dept (Rad	104.50	Mnthly lease
31330	001	035555	Cartridge Center Inc	2100	Supplemental Adult Prob Svcs	24201	0235	Probation	59.00	HP 202X Black
090722-101022	001	221158	CEL & P	1000	General	30035	0068	County Commissioners	15576.34	10090-002
090722-101022	001	221158	CEL & P	1000	General	30035	0068	County Commissioners	43.97	10090-003
090722-101022	001	221158	CEL & P	1000	General	30035	0068	County Commissioners	3710.79	10001-001
090722-101022	001	221158	CEL & P	1000	General	30035	0068	County Commissioners	152.35	13197-001
090722-101022	001	221158	CEL & P	1000	General	30035	0068	County Commissioners	586.53	17096-001
090722-101022	001	221158	CEL & P	1000	General	30035	0068	County Commissioners	73.54	17096-002
090722-101022	001	221158	CEL & P	1000	General	30035	0068	County Commissioners	1715.21	49583-001
090822-101022	001	221158	CEL & P	1176	Motor Vehicle Highway	30035	0529	County Highway	584.44	26802-001
090822-101022	001	221158	CEL & P	1176	Motor Vehicle Highway	30035	0529	County Highway	73.20	26802-002
090822-101022	001	221158	CEL & P	1176	Motor Vehicle Highway	30035	0529	County Highway	498.65	26802-003
102622-111222 Acct 02-6000354165-5787406 5	001	035523	CenterPoint Energy	1000	General	30035	0068	County Commissioners	1050.43	Memorial Dr
102622-111222 Acct 02-600572804-5506129 5	001	035523	CenterPoint Energy	1000	General	30035	0068	County Commissioners	252.36	100 E Main
102622-111222 Acct 02-600150909-5173209 4	001	035523	CenterPoint Energy	1000	General	30035	0068	County Commissioners	22.88	307 Binford
102622-111222 Acct 02-600693458-5061955 9	001	035523	CenterPoint Energy	1000	General	30035	0068	County Commissioners	60.56	South Blvd
102622-111222 Acct 02-600293589-5228671 3	001	035523	CenterPoint Energy	1176	Motor Vehicle Highway	30035	0529	County Highway	69.55	818 Whitlock
IO63906	001	035480	Central Ind Rubber Products	1000	General	24202	0380	Jail	215.16	Adapter
Multiple Acct 2036375	001	035481	Ceres Solutions Cooperative	1170	LIT Public Safety-Cnty Share	21000	0005	County Sheriff	15923.50	July 2022 Fuel
5022 Acct 2036340	001	035481	Ceres Solutions Cooperative	1000	General	21000	0012	Veterans Service Officer	60.62	Fuel
3207	001	035481	Ceres Solutions Cooperative	1000	General	21000	0313	Building Maintenance	111.53	
370108	001	035481	Ceres Solutions Cooperative	1000	General	21000	0313	Building Maintenance	140.01	
4440	001	035481	Ceres Solutions Cooperative	1000	General	21000	0313	Building Maintenance	94.61	
379651	001	035481	Ceres Solutions Cooperative	1000	General	21000	0313	Building Maintenance	92.70	
6234	001	035481	Ceres Solutions Cooperative	1000	General	21000	0313	Building Maintenance	105.45	
383067	001	035481	Ceres Solutions Cooperative	1000	General	21000	0313	Building Maintenance	148.02	
7819	001	035481	Ceres Solutions Cooperative	1000	General	21000	0313	Building Maintenance	96.63	
Election 2022	001	035464	Cheryl Hughes	1000	General	11314	0104	Election Expense	60.00	Poll Judge
Jury1012	001	035375	Christina L. Hodges	1000	General	30046	0201	Superior Court #1	15.82	served
Jury1012	001	035375	Christina L. Hodges	1000	General	30047	0201	Superior Court #1	103.52	served
27084	001	035509	Christopher B Burke Engineerin	8125	2021 MHMP Grant 97.047	30050	9655	Emergency Response	2548.87	082822-092422
4133837612	001	221261	Cintas Corporation Loc #366	1176	Motor Vehicle Highway	13002	0529	County Highway	272.77	Uniforms
4134466158	001	221261	Cintas Corporation Loc #366	1176	Motor Vehicle Highway	13002	0529	County Highway	198.49	Uniforms
22-54-3	001	035556	Civilcon	1135	Cumulative Bridge	24202	0529	County Highway	10463.48	42" CMP/bands
435682	001	035482	Clark Dietz Inc	2600	Drain Construction/Reconst	65194	0006	County Surveyor	29463.22	M0880070
2022-11LITCS	001	221237	Clark Township Trustee	7330	LIT Local Income Tax	50000	0002	County Auditor	1142.67	NOV CERT SHARES
60886	001	035557	Clark Truck Equipment Co Inc	1176	Motor Vehicle Highway	23523	0529	County Highway	644.00	Wldng hose reel
60912	001	035557	Clark Truck Equipment Co Inc	1176	Motor Vehicle Highway	33450	0529	County Highway	6100.00	Spreader
2022-11LITCS	001	035547	Coal Creek Township Trustee	7330	LIT Local Income Tax	50000	0002	County Auditor	2202.75	NOV CERT SHARES
E7234172	002	ACH	Colonial Life Insurance Co	5100	0300 Payroll Clearing	00019	0000	No Department	438.36	

## 10252022-11142022 Docket.xlsx

Invoice	Bank	Check	Payee Name 1	Fund	Fund Desc	Acct	Loc	Loc Desc	Amount	Comment
102122-112022 (AUG & SEPT)	001	035483	Comcast	1000	General	30035	0068	County Commissioners	133.25	8529200780169950
101922-111822	001	035483	Comcast	1000	General	30035	0068	County Commissioners	228.52	8529200780167616
3603393 BG-165080	001	035524	Constellation New Energy Gas D	1000	General	30035	0068	County Commissioners	4.55	Sept 2022 Gas
3603399 BG-165082	001	035524	Constellation New Energy Gas D	1000	General	30035	0068	County Commissioners	4115.13	Sept 2022 Gas
3603395 BG-165083	001	035524	Constellation New Energy Gas D	1000	General	30035	0068	County Commissioners	18.18	Sept 2022 Gas
3603394 BG-165081	001	035524	Constellation New Energy Gas D	1176	Motor Vehicle Highway	30035	0529	County Highway	0.91	Sept 2022 Gas
FS-2595-0103122	001	035525	Cordant Health Solutions	2100	Supplemental Adult Prob Svcs	30152	0235	Probation	5165.00	Oct 22 Chem Test
130405903	001	221199	Courtine Yohler	1191	Riverboat	31123	0068	County Commissioners	37.45	Topline Reimb
10133	001	221176	Crawfordsville Clk Treasurer	4976	1154 Cnty Law Enforc Cont Ed	50000	0005	County Sheriff	846.00	3Q2022 LAW ED
Sept 2022 Wheel/Surtax Dist	001	221184	Crawfordsville Clk Treasurer	6020	0207 Wheel Tax/Surtax Combined	31200	0002	County Auditor	12177.28	
2022-11LITCS	001	221238	Crawfordsville Clk Treasurer	7330	LIT Local Income Tax	50000	0002	County Auditor	260939.33	NOV CERT SHARES
2022-11LITPS	001	221238	Crawfordsville Clk Treasurer	7331	Lit Public Safety Fund	50000	0002	County Auditor	180946.67	NOV LIT PUB SFTY
97536	001	035484	Crawfordsville Paper	1000	General	20001	0380	Jail	738.01	Soap/Towels/Etc
97564	001	035558	Crawfordsville Paper	1000	General	20001	0380	Jail	515.00	Trashbags/TP
97612	001	035558	Crawfordsville Paper	1000	General	20001	0380	Jail	74.20	Handsoap
2022-11LITCS	001	221239	Crawfordsville Public Library	7330	LIT Local Income Tax	50000	0002	County Auditor	50254.08	NOV CERT SHARES
090722-100722 COURTHOUSE	001	035485	Crawfordsville Utilities	1000	General	30035	0068	County Commissioners	155.10	13003000
090622-100622	001	035526	Crawfordsville Utilities	1000	General	30035	0068	County Commissioners	46.41	MCCG
092722-102522	001	035526	Crawfordsville Utilities	1000	General	30035	0068	County Commissioners	1994.53	HWY
090822-101122	001	035526	Crawfordsville Utilities	1176	Motor Vehicle Highway	30035	0529	County Highway	69.97	818 Whitlock
Sept 2022 Wheel/Surtax Dist	001	221185	Darlington Clerk Treasurer	6020	0207 Wheel Tax/Surtax Combined	31200	0002	County Auditor	656.67	
2022-11LITCS	001	221240	Darlington Clerk Treasurer	7330	LIT Local Income Tax	50000	0002	County Auditor	3801.92	NOV CERT SHARES
2022-11LITPS	001	221240	Darlington Clerk Treasurer	7331	Lit Public Safety Fund	50000	0002	County Auditor	2636.42	NOV LIT PUB SFTY
2022-11LITCS	001	035548	Darlington Public Library	7330	LIT Local Income Tax	50000	0002	County Auditor	2087.42	NOV CERT SHARES
	001	035486	Darren Chadd	1000	General	30052	0201	Superior Court #1	25.00	10/11/22 Pro Tem
	001	035486	Darren Chadd	1000	General	30052	0201	Superior Court #1	25.00	10/17/22 Pro Tem
0930202237	001	035559	Datamark Development	1159	Health	30050	0610	Health Dept	140.00	WinRecords
0831202237	001	035559	Datamark Development	1159	Health	30050	0610	Health Dept	140.00	WinRecords
Election 2022	001	035465	David Lunsford	1000	General	11314	0104	Election Expense	60.00	Poll Judge
129710573	001	221200	David W Hampton	1191	Riverboat	31123	0068	County Commissioners	50.00	Topline Reimb
129374718	001	221201	Dawn Ellis	1191	Riverboat	31123	0068	County Commissioners	50.00	Topline Reimb
130355921	001	221202	Deb Yerkes- Mason	1191	Riverboat	31123	0068	County Commissioners	50.00	Topline Reimb
2022-003	001	221159	Dossett Consulting, LLC	8899	93.563 0527 Clk Gen IV-D Incen	30050	0001	Clerk of Circuit	1500.00	07-09/2022
092722-102522	001	035527	Duke Energy	1176	Motor Vehicle Highway	30035	0529	County Highway	14.30	HWY
3081	001	035487	Edge Information Technologies	1170	LIT Public Safety-Cnty Share	30500	0005	County Sheriff	3564.44	
119	001	035487	Edge Information Technologies	1000	General	30050	9616	IT	15200.00	Sept 2022
3043	001	035487	Edge Information Technologies	1000	General	30124	9616	IT	849.75	Sensor Renewal
2962	001	035487	Edge Information Technologies	1000	General	44500	9616	IT	1964.24	2 Laptops
INV-16046	001	035488	EGOV Strategies	1000	General	44400	9616	IT	4915.00	Annual License
Election 2022	001	035466	Elizabeth Flohr	1000	General	11314	0104	Election Expense	60.00	Poll Judge
Jury1012	001	035376	Elliott B. Franklin	1000	General	30047	0201	Superior Court #1	17.94	appeared
26110509	001	035560	Enviromental Systems Research	4915	Mapping Fees	21916	0753	GIS/Mapping	400.00	Anl maint
Election 2022	001	035467	Eric Wilson	1000	General	11314	0104	Election Expense	240.00	Poll Judge
Election 2022	001	035468	Erika Frazier	1000	General	11314	0104	Election Expense	300.00	Poll Judge
3562	001	035561	Essence Chemical Company	1176	Motor Vehicle Highway	23523	0529	County Highway	228.55	Glisten w/wax
INCR144612	001	035562	Fastenal Co	1000	General	24202	0380	Jail	20.16	Filters

## 10252022-11142022 Docket.xlsx

Invoice	Bank	Check	Payee Name 1	Fund	Fund Desc	Acct	Loc	Loc Desc	Amount	Comment
1572	001	035510	Foster Farm Drainage	2700	Drainage Maintenance	65077	0006	County Surveyor	677.20	Vancleave work
2022-111UTCS	001	221241	Franklin Township Trustee	7330	LIT Local Income Tax	50000	0002	County Auditor	1298.58	NOV CERT SHARES
022301515	001	035563	Galls Quartermaster	8425	LEPC GRANT Hazd Sub & Resp	21500	9655	Emergency Response	3823.32	1st Respnrdr kit
222484797	001	035564	Gordon Food Service	1000	General	20004	0380	Jail	102.91	Kitchen items
222484796	001	035564	Gordon Food Service	1000	General	20004	0380	Jail	5537.40	Food
222663400	001	035564	Gordon Food Service	1000	General	20004	0380	Jail	5010.76	Food Items
222663402	001	035564	Gordon Food Service	1000	General	20004	0380	Jail	70.74	Kitchen Items
483715835	001	035511	Government Leasing & Financing	1173	MVH Restricted Fund	44500	0529	County Highway	17129.21	Vhcle pymt
130155355	001	221203	Hannah Cochran	1191	Riverboat	31123	0068	County Commissioners	32.10	Topline Reimb
130376541	001	221204	Heather Barajas	1191	Riverboat	31123	0068	County Commissioners	50.00	Topline Reimb
129427792	001	221205	Heather Laffoon	1191	Riverboat	31123	0068	County Commissioners	50.00	Topline Reimb
7013504 Acct 6035322540195124	001	035528	Home Depot Credit Services	1000	General	24202	0380	Jail	249.00	Step Ladder
1614548 Acct 6035322540195124	001	035528	Home Depot Credit Services	1000	General	24202	0380	Jail	99.00	Drill/driver kit
7625372 Acct 6035322540195124	001	035528	Home Depot Credit Services	1000	General	24202	0380	Jail	69.97	Step Ladder
Mathison	001	035512	Hunt & Son Funeral Home	1000	General	30022	0068	County Commissioners	100.00	
Verduin	001	035512	Hunt & Son Funeral Home	1000	General	30022	0068	County Commissioners	100.00	
551245	001	221160	Huntington Public Capital Corp	1000	General	24201	0068	County Commissioners	5.00	HVAC Late fee
2020-259-A-0000010	001	035529	HWC Engineering	1138	Cumulative Capital Development	30191	0068	County Commissioners	501.90	Sept 2022
090922-101122 JAIL	001	035489	Indiana American Water Co.	1000	General	30035	0068	County Commissioners	1691.34	210005585747
090922-101122 JAIL	001	035489	Indiana American Water Co.	1000	General	30035	0068	County Commissioners	59.08	210005586023
090722-100622 CONSTITUTION ROW	001	035489	Indiana American Water Co.	1000	General	30035	0068	County Commissioners	172.54	210046717699
090922-101122 HWY	001	035489	Indiana American Water Co.	1176	Motor Vehicle Highway	30035	0529	County Highway	228.03	210006523643
090922-101122 HWY	001	035489	Indiana American Water Co.	1176	Motor Vehicle Highway	30035	0529	County Highway	59.08	220023096433
092222-102122 Acct 1010-210007045559	001	035530	Indiana American Water Co.	1000	General	30035	0068	County Commissioners	59.08	100 E Main
092222-102122 Acct 1010-210005739339	001	035530	Indiana American Water Co.	1000	General	30035	0068	County Commissioners	49.03	110 W South Blvd
092222-102122 Acct 1010-210006105236	001	035530	Indiana American Water Co.	1000	General	30035	0068	County Commissioners	196.71	100 E Main
092222-102122 Acct 1010-210006232619	001	035530	Indiana American Water Co.	1000	General	30035	0068	County Commissioners	105.93	307 Binford
	002	ACH	Indiana Dept Of Revenue	5100	0300 Payroll Clearing	00014	0000	No Department	8240.62	DDCIR-COUNTY TAX
	002	ACH	Indiana Dept Of Revenue	5100	0300 Payroll Clearing	00014	0000	No Department	11870.65	DDCIR-STATE TAX
	002	ACH	Indiana Dept Of Revenue	5100	0300 Payroll Clearing	00014	0000	No Department	8562.04	DDCIR-COUNTY TAX
	002	ACH	Indiana Dept Of Revenue	5100	0300 Payroll Clearing	00014	0000	No Department	12378.08	DDCIR-STATE TAX
	001	ACH	Indiana State Collection Unit	5100	0300 Payroll Clearing	00022	0000	No Department	426.00	DDCIR-CHILD SUP
	001	ACH	Indiana State Collection Unit	5100	0300 Payroll Clearing	00022	0000	No Department	426.00	DDCIR-CHILD SUP
CT/GC Samples 2 (2/15, 2/15)	001	035513	Indiana State Dept Of Health	1159	Health	30050	0610	Health Dept	40.00	
12713	001	035531	Indigital Telecom	4900	Central Comms Center	30148	0303	Communications Dept (Rad	4322.16	4th Qtr
22020-212-1	001	035532	Infrastructure & Energy Alt.	1000	General	30050	0068	County Commissioners	223787.19	Claude Moody
	001	ACH	Internal Revenue Service	5100	0300 Payroll Clearing	00012	0000	No Department	32755.78	DDCIR-FED TAX
	001	ACH	Internal Revenue Service	5100	0300 Payroll Clearing	00010	0000	No Department	5616.79	DDCIR-FICA-MED
	001	ACH	Internal Revenue Service	5100	0300 Payroll Clearing	00013	0000	No Department	24016.68	DDCIR-FICA-SS
	001	ACH	Internal Revenue Service	5100	0300 Payroll Clearing	00012	0000	No Department	33989.42	DDCIR-FED TAX
	001	ACH	Internal Revenue Service	5100	0300 Payroll Clearing	00010	0000	No Department	5688.03	DDCIR-FICA-MED
	001	ACH	Internal Revenue Service	5100	0300 Payroll Clearing	00013	0000	No Department	24321.10	DDCIR-FICA-SS
	001	ACH	Internal Revenue Service	1189	Recorder's Records Perpet	12000	0004	County Recorder	9.24	DDCIR-FICA-MED
	001	ACH	Internal Revenue Service	1189	Recorder's Records Perpet	12000	0004	County Recorder	39.52	DDCIR-FICA-SS
	001	ACH	Internal Revenue Service	1189	Recorder's Records Perpet	12000	0004	County Recorder	7.50	DDCIR-FICA-MED
	001	ACH	Internal Revenue Service	1189	Recorder's Records Perpet	12000	0004	County Recorder	32.08	DDCIR-FICA-SS



## 10252022-11142022 Docket.xlsx

Invoice	Bank	Check	Payee Name 1	Fund	Fund Desc	Acct	Loc	Loc Desc	Amount	Comment
	001	ACH	Internal Revenue Service	9131	JCAP 2020-01 Grant (Women's)	12000	0005	County Sheriff	15.74	DDClr-FICA-MED
	001	ACH	Internal Revenue Service	9131	JCAP 2020-01 Grant (Women's)	12000	0005	County Sheriff	67.31	DDClr-FICA-SS
	001	ACH	Internal Revenue Service	9131	JCAP 2020-01 Grant (Women's)	12000	0005	County Sheriff	19.94	DDClr-FICA-MED
	001	ACH	Internal Revenue Service	9131	JCAP 2020-01 Grant (Women's)	12000	0005	County Sheriff	85.25	DDClr-FICA-SS
	001	ACH	Internal Revenue Service	1000	General	12000	0068	County Commissioners	4045.62	DDClr-FICA-MED
	001	ACH	Internal Revenue Service	1000	General	12000	0068	County Commissioners	17298.49	DDClr-FICA-SS
	001	ACH	Internal Revenue Service	1000	General	12000	0068	County Commissioners	4209.20	DDClr-FICA-MED
	001	ACH	Internal Revenue Service	1000	General	12000	0068	County Commissioners	17997.87	DDClr-FICA-SS
	001	ACH	Internal Revenue Service	1222	Statewide 911	12005	0303	Communications Dept (Rad	257.05	DDClr-FICA-MED
	001	ACH	Internal Revenue Service	4900	Central Comms Center	12005	0303	Communications Dept (Rad	332.28	DDClr-FICA-MED
	001	ACH	Internal Revenue Service	1222	Statewide 911	12005	0303	Communications Dept (Rad	1099.07	DDClr-FICA-SS
	001	ACH	Internal Revenue Service	4900	Central Comms Center	12005	0303	Communications Dept (Rad	1420.77	DDClr-FICA-SS
	001	ACH	Internal Revenue Service	1222	Statewide 911	12005	0303	Communications Dept (Rad	287.99	DDClr-FICA-MED
	001	ACH	Internal Revenue Service	4900	Central Comms Center	12005	0303	Communications Dept (Rad	210.01	DDClr-FICA-MED
	001	ACH	Internal Revenue Service	1222	Statewide 911	12005	0303	Communications Dept (Rad	1231.43	DDClr-FICA-SS
	001	ACH	Internal Revenue Service	4900	Central Comms Center	12005	0303	Communications Dept (Rad	897.88	DDClr-FICA-SS
	001	ACH	Internal Revenue Service	1176	Motor Vehicle Highway	12000	0529	County Highway	772.16	DDClr-FICA-MED
	001	ACH	Internal Revenue Service	1176	Motor Vehicle Highway	12000	0529	County Highway	3301.70	DDClr-FICA-SS
	001	ACH	Internal Revenue Service	1176	Motor Vehicle Highway	12000	0529	County Highway	779.36	DDClr-FICA-MED
	001	ACH	Internal Revenue Service	1176	Motor Vehicle Highway	12000	0529	County Highway	3332.46	DDClr-FICA-SS
	001	ACH	Internal Revenue Service	1159	Health	12000	0610	Health Dept	128.11	DDClr-FICA-MED
	001	ACH	Internal Revenue Service	1206	Local Health Dep Trust Acct	12000	0610	Health Dept	15.21	DDClr-FICA-MED
	001	ACH	Internal Revenue Service	8300	SUPP PH WORKFORCE GRT 93.354	12000	0610	Health Dept	22.16	DDClr-FICA-MED
	001	ACH	Internal Revenue Service	8120	Phep Grant 18/19 CIda 93.074	12000	0610	Health Dept	19.22	DDClr-FICA-MED
	001	ACH	Internal Revenue Service	1159	Health	12000	0610	Health Dept	547.83	DDClr-FICA-SS
	001	ACH	Internal Revenue Service	1206	Local Health Dep Trust Acct	12000	0610	Health Dept	65.04	DDClr-FICA-SS
	001	ACH	Internal Revenue Service	8300	SUPP PH WORKFORCE GRT 93.354	12000	0610	Health Dept	94.76	DDClr-FICA-SS
	001	ACH	Internal Revenue Service	8120	Phep Grant 18/19 CIda 93.074	12000	0610	Health Dept	82.19	DDClr-FICA-SS
	001	ACH	Internal Revenue Service	1159	Health	12000	0610	Health Dept	108.43	DDClr-FICA-MED
	001	ACH	Internal Revenue Service	1206	Local Health Dep Trust Acct	12000	0610	Health Dept	15.66	DDClr-FICA-MED
	001	ACH	Internal Revenue Service	8300	SUPP PH WORKFORCE GRT 93.354	12000	0610	Health Dept	30.27	DDClr-FICA-MED
	001	ACH	Internal Revenue Service	8120	Phep Grant 18/19 CIda 93.074	12000	0610	Health Dept	19.67	DDClr-FICA-MED
	001	ACH	Internal Revenue Service	1159	Health	12000	0610	Health Dept	463.65	DDClr-FICA-SS
	001	ACH	Internal Revenue Service	1206	Local Health Dep Trust Acct	12000	0610	Health Dept	66.95	DDClr-FICA-SS
	001	ACH	Internal Revenue Service	8300	SUPP PH WORKFORCE GRT 93.354	12000	0610	Health Dept	129.43	DDClr-FICA-SS
	001	ACH	Internal Revenue Service	8120	Phep Grant 18/19 CIda 93.074	12000	0610	Health Dept	84.10	DDClr-FICA-SS
22466	001	221161	JAF Property Services Inc	1000	General	30124	9616	IT	135.00	GC Alarm
Jury1012	001	035377	James L Rauch	1000	General	30047	0201	Superior Court #1	27.25	appeared
7095	001	035565	Jamie Menard	1138	Cumulative Capital Development	30129	0068	County Commissioners	125.00	Carpet cleaned
Jury1012	001	035378	Jamie N. Bennett	1000	General	30047	0201	Superior Court #1	22.35	appeared
Jury1012	001	035379	Janet C. Campbell	1000	General	30047	0201	Superior Court #1	17.94	appeared
Jury1012	001	035380	Jayde E. Hernandez	1000	General	30047	0201	Superior Court #1	92.74	served
Jury1012	001	035380	Jayde E. Hernandez	1000	General	30046	0201	Superior Court #1	29.51	served
130364792	001	221206	Jennifer Andel	1191	Riverboat	31123	0068	County Commissioners	50.00	Topline Reimb
Mileage	001	221228	Jennifer Andel	1181	Plat Book	33500	0002	County Auditor	169.54	Auditor Conf
Jury1012	001	035381	Jennifer M. Hoar	1000	General	30047	0201	Superior Court #1	16.47	appeared

10252022-11142022 Docket.xlsx

Invoice	Bank	Check	Payee Name 1	Fund	Fund Desc	Acct	Loc	Loc Desc	Amount	Comment
130261232	001	221207	Jennifer S Harshbarger	1191	Riverboat	31123	0068	County Commissioners	49.22	Topline Reimb
Jury1012	001	035382	Joe A. Poteet	1000	General	30047	0201	Superior Court #1	19.90	appeared
Jury1012	001	035383	John C. Maxwell	1000	General	30047	0201	Superior Court #1	20.88	appeared
09062022	001	035566	Johnson Co Treasurer	1000	General	30021	0068	County Commissioners	480.00	August 22 JO
Jury1012	001	035384	Jon A. Young	1000	General	30047	0201	Superior Court #1	27.25	appeared
Jury1012	001	035385	Jordan C. Crull	1000	General	30047	0201	Superior Court #1	23.82	appeared
Ad ID 69298 Acct 2884	001	221162	Journal Review	1203	Tax Sale Fees	50000	0002	County Auditor	1609.12	2022 Tax Sale
AD ID 69530 Acct 2874	001	221177	Journal Review	1176	Motor Vehicle Highway	30800	0529	County Highway	71.11	Bidders
Acct 0010284000049	001	221262	Journal Review	2100	Supplemental Adult Prob Svcs	32100	0235	Probation	163.00	Yrly Renewal
Walmart	001	221147	JP Morgan Chase	1119	Clerk's Records Perpetuation	24202	0001	Clerk of Circuit	287.95	Monitors/cables
GoTo Meeting	001	221147	JP Morgan Chase	1000	General	32100	0002	County Auditor	10.00	Log in
Amazon	001	221147	JP Morgan Chase	1000	General	30210	0007	County Coroner	42.78	Thumb drive
0786-000613406	001	221147	JP Morgan Chase	1000	General	30035	0068	County Commissioners	57.00	Republic
Republic	001	221147	JP Morgan Chase	1000	General	30035	0068	County Commissioners	230.00	
Lift Device Permit	001	221147	JP Morgan Chase	1138	Cumulative Capital Development	30129	0068	County Commissioners	393.89	IDHS
Lift Device Permit	001	221147	JP Morgan Chase	1138	Cumulative Capital Development	30129	0068	County Commissioners	393.89	IDHS
Indeed	001	221147	JP Morgan Chase	1000	General	30800	0068	County Commissioners	136.00	Engineer Ad
Doubletree	001	221147	JP Morgan Chase	1000	General	33500	0068	County Commissioners	226.00	Lori Dossett
Doubletree	001	221147	JP Morgan Chase	1000	General	33500	0068	County Commissioners	413.85	Jim Fulwider
Drury	001	221147	JP Morgan Chase	1000	General	33500	0068	County Commissioners	871.00	Klein
Amazon	001	221147	JP Morgan Chase	1000	General	24201	0201	Superior Court #1	124.87	Ink
Wendy's	001	221147	JP Morgan Chase	1000	General	33500	0201	Superior Court #1	11.20	Conference
Chocolate Cafe	001	221147	JP Morgan Chase	1000	General	33500	0201	Superior Court #1	22.79	Conference
Bruno's	001	221147	JP Morgan Chase	1000	General	33500	0201	Superior Court #1	35.00	Conference
Arni's	001	221147	JP Morgan Chase	1000	General	33500	0201	Superior Court #1	36.65	Conference
Chicory Cafe	001	221147	JP Morgan Chase	1000	General	33500	0201	Superior Court #1	15.24	Conference
Courtyard by Marriott	001	221147	JP Morgan Chase	1000	General	30001	0201	Superior Court #1	111.07	Conference
Courtyard by Marriott	001	221147	JP Morgan Chase	1000	General	30001	0201	Superior Court #1	0.93	Conference
Southwest	001	221147	JP Morgan Chase	1000	General	30001	0201	Superior Court #1	243.00	Conference
Bibles in Bulk	001	221147	JP Morgan Chase	1000	General	30256	0201	Superior Court #1	199.80	20 Picture books
El Charro	001	221147	JP Morgan Chase	1000	General	30256	0201	Superior Court #1	50.00	Gift Card
Get Air	001	221147	JP Morgan Chase	1000	General	30256	0201	Superior Court #1	50.00	Gift Card
US Postal Service	001	221147	JP Morgan Chase	1000	General	24201	0271	Public Defender	60.00	Stamps
Zoom	001	221147	JP Morgan Chase	1000	General	24201	0271	Public Defender	149.90	Renewal
TopLine	001	221147	JP Morgan Chase	1000	General	22030	0313	Building Maintenance	315.65	Jackets
Home Depot	001	221147	JP Morgan Chase	1000	General	21850	0313	Building Maintenance	103.00	Bleach, gloves
Home Depot	001	221147	JP Morgan Chase	1000	General	21850	0313	Building Maintenance	54.24	String/pods
Stevenson's Ace	001	221147	JP Morgan Chase	1000	General	21850	0313	Building Maintenance	24.99	Fillhose
Stevenson's Ace	001	221147	JP Morgan Chase	1000	General	21850	0313	Building Maintenance	542.98	blades/chains
Connor Co	001	221147	JP Morgan Chase	1000	General	21850	0313	Building Maintenance	29.05	Repair Kit
Walmart	001	221147	JP Morgan Chase	1159	Health	24202	0610	Health Dept	5.82	Napkins
10to8	001	221147	JP Morgan Chase	1159	Health	44440	0610	Health Dept	25.00	Software
Purdue Serv Safe Training	001	221147	JP Morgan Chase	1159	Health	33500	0610	Health Dept	165.00	Mia Stadler
Quill	001	221147	JP Morgan Chase	1000	General	24201	0660	4-D Program (Child Support)	204.21	Misc supplies
Quill	001	221147	JP Morgan Chase	1000	General	24201	0660	4-D Program (Child Support)	103.94	Misc supplies
Quill	001	221147	JP Morgan Chase	1000	General	24201	0660	4-D Program (Child Support)	45.18	Brother tape

## 10252022-11142022 Docket.xlsx

Invoice	Bank	Check	Payee Name 1	Fund	Fund Desc	Acct	Loc	Loc Desc	Amount	Comment
Walgreens	001	221147	JP Morgan Chase	1000	General	24201	0660	4-D Program (Child Support)	12.98	
Joink	001	221147	JP Morgan Chase	1000	General	30095	9616	IT	2.00	Oct 2022
Amazon	001	221147	JP Morgan Chase	1000	General	33500	9655	Emergency Response	38.46	Scar wax
Amazon	001	221147	JP Morgan Chase	1000	General	40005	9655	Emergency Response	106.89	Trailer Jack
Amazon	001	221147	JP Morgan Chase	1000	General	24201	9655	Emergency Response	99.98	Printer Paper
Amazon	001	221147	JP Morgan Chase	1000	General	24201	9655	Emergency Response	99.98	Printer Paper
Amazon	001	221147	JP Morgan Chase	1000	General	24201	9655	Emergency Response	99.98	Printer Paper
Amazon	001	221147	JP Morgan Chase	1000	General	24201	9655	Emergency Response	43.98	Dry EraseMarkers
Hilton	001	221148	JP Morgan Chase	1217	Cnty Elected Officials Train	21001	0000	No Department	381.00	Conference Deb
Hilton	001	221148	JP Morgan Chase	1217	Cnty Elected Officials Train	21001	0000	No Department	381.00	Conference Peggy
Chicory Cafe	001	221148	JP Morgan Chase	1181	Plat Book	33500	0002	County Auditor	38.43	Conference
Clementines	001	221148	JP Morgan Chase	1181	Plat Book	33500	0002	County Auditor	78.00	Conference
Doubletree Diner	001	221148	JP Morgan Chase	1181	Plat Book	33500	0002	County Auditor	46.00	Conference
Sandwich Shop	001	221148	JP Morgan Chase	1181	Plat Book	33500	0002	County Auditor	28.00	Conference
Doubtree Hotel + Parking	001	221148	JP Morgan Chase	1181	Plat Book	33500	0002	County Auditor	484.00	Conference JA
Doubletree Hotel	001	221148	JP Morgan Chase	1181	Plat Book	33500	0002	County Auditor	452.00	Conference MB
Home Depot	001	221148	JP Morgan Chase	1181	Plat Book	24201	0002	County Auditor	42.59	Boards/braces
Stretcher Bar Warehouse	001	221148	JP Morgan Chase	1181	Plat Book	24201	0002	County Auditor	900.27	Frames & Braces
Tatte Bakery	001	221148	JP Morgan Chase	1224	Reassessment	30001	0008	County Assessor	10.47	IAAO Bentley
Time Out Market	001	221148	JP Morgan Chase	1224	Reassessment	30001	0008	County Assessor	23.76	IAAO Bentley
Joe's Boston	001	221148	JP Morgan Chase	1224	Reassessment	30001	0008	County Assessor	32.79	IAAO Bentley
Tatte Bakery	001	221148	JP Morgan Chase	1224	Reassessment	30001	0008	County Assessor	24.77	IAAO Bentley
Sheraton Boston	001	221148	JP Morgan Chase	1224	Reassessment	30001	0008	County Assessor	1158.70	IAAO Bentley
Amazon	001	221148	JP Morgan Chase	2100	Supplemental Adult Prob Svcs	24203	0235	Probation	185.10	Chairs
CCI MRT	001	221148	JP Morgan Chase	2100	Supplemental Adult Prob Svcs	20006	0235	Probation	245.98	Grad/Cmpl't coins
FL Mercantile Co	001	221148	JP Morgan Chase	2100	Supplemental Adult Prob Svcs	30001	0235	Probation	5.10	POPAI
Penn Station	001	221148	JP Morgan Chase	2100	Supplemental Adult Prob Svcs	30001	0235	Probation	21.97	POPAI
Penn Station	001	221148	JP Morgan Chase	2100	Supplemental Adult Prob Svcs	30001	0235	Probation	41.34	POPAI
33 Brick St	001	221148	JP Morgan Chase	2100	Supplemental Adult Prob Svcs	30001	0235	Probation	42.11	POPAI
1875 Steakhouse	001	221148	JP Morgan Chase	2100	Supplemental Adult Prob Svcs	30001	0235	Probation	206.58	POPAI
Colonnade Cafe	001	221148	JP Morgan Chase	2100	Supplemental Adult Prob Svcs	30001	0235	Probation	48.30	POPAI
Spring Bar	001	221148	JP Morgan Chase	2100	Supplemental Adult Prob Svcs	30001	0235	Probation	35.00	POPAI
Colonnade Cafe	001	221148	JP Morgan Chase	2100	Supplemental Adult Prob Svcs	30001	0235	Probation	48.30	POPAI
Power Plant Bar	001	221148	JP Morgan Chase	2100	Supplemental Adult Prob Svcs	30001	0235	Probation	117.46	POPAI
McAllister's	001	221148	JP Morgan Chase	2100	Supplemental Adult Prob Svcs	30001	0235	Probation	27.51	POPAI
French Lick Resort	001	221148	JP Morgan Chase	2100	Supplemental Adult Prob Svcs	30001	0235	Probation	37.59	POPAI
Walmart	001	221148	JP Morgan Chase	2100	Supplemental Adult Prob Svcs	44500	0235	Probation	39.98	Canopy
Pomp's Tire	001	221148	JP Morgan Chase	2100	Supplemental Adult Prob Svcs	30100	0235	Probation	153.26	Tires/oil chnge
FL Mercantile Co	001	221148	JP Morgan Chase	2100	Supplemental Adult Prob Svcs	30001	0235	Probation	18.09	POPAI
McDonald's	001	221148	JP Morgan Chase	2100	Supplemental Adult Prob Svcs	30001	0235	Probation	11.65	POPAI
Miguels El Gallo Mexican	001	221148	JP Morgan Chase	2100	Supplemental Adult Prob Svcs	30001	0235	Probation	64.50	POPAI
Birth Certificate	001	221148	JP Morgan Chase	2100	Supplemental Adult Prob Svcs	24203	0235	Probation	11.50	
The Paper of Montgomery County	001	221148	JP Morgan Chase	4159	Zoning Fee Fund	30079	0312	Building Dept (Permits)	33.04	Legal Ad
Amazon	001	221148	JP Morgan Chase	1176	Motor Vehicle Highway	21850	0529	County Highway	143.75	Misc
Amazon	001	221148	JP Morgan Chase	1176	Motor Vehicle Highway	21850	0529	County Highway	89.99	TV
Amazon	001	221148	JP Morgan Chase	1176	Motor Vehicle Highway	21850	0529	County Highway	49.77	HDMI Cable

## 10252022-11142022 Docket.xlsx

Invoice	Bank	Check	Payee Name 1	Fund	Fund Desc	Acct	Loc	Loc Desc	Amount	Comment
Amazon	001	221148	JP Morgan Chase	1176	Motor Vehicle Highway	21850	0529	County Highway	14.68	Extension cord
Harbor Freight	001	221148	JP Morgan Chase	1176	Motor Vehicle Highway	23523	0529	County Highway	68.44	Tire Steel
Tire Service International	001	221148	JP Morgan Chase	1176	Motor Vehicle Highway	23523	0529	County Highway	731.40	Stepper
Double Tree	001	221148	JP Morgan Chase	1176	Motor Vehicle Highway	33500	0529	County Highway	691.02	Conference
Double Tree	001	221148	JP Morgan Chase	1176	Motor Vehicle Highway	33500	0529	County Highway	661.02	Conference
Intuit QB	001	221148	JP Morgan Chase	1159	Health	44440	0610	Health Dept	30.00	Software
Zoom	001	221148	JP Morgan Chase	1159	Health	44440	0610	Health Dept	14.99	Software
Fingerprint Co	001	221149	JP Morgan Chase	8899	93.563 0527 Clk Gen IV-D Incen	30050	0001	Clerk of Circuit	21.75	Fingerprinting
Walmart	001	221149	JP Morgan Chase	9149	PSC Vet Ct Grant	30185	0235	Probation	100.00	Gift cards
Speedway	001	221149	JP Morgan Chase	9149	PSC Vet Ct Grant	30185	0235	Probation	100.00	Gift cards
Walmart	001	221149	JP Morgan Chase	9149	PSC Vet Ct Grant	21919	0235	Probation	100.00	Gift cards
Kroger	001	221149	JP Morgan Chase	9145	DFMCC Drug Free LCC 22/23	31221	0235	Probation	100.00	Gift cards
CCI MRT	001	221149	JP Morgan Chase	9178	FY22 DOC PROBATION GRANT	20006	0235	Probation	153.52	Grad/Comp Coins
Walmart	001	221149	JP Morgan Chase	9106	FY22 Family Recovery Ct Grt	20064	0235	Probation	115.96	Client shirts
Casey's	001	221149	JP Morgan Chase	9106	FY22 Family Recovery Ct Grt	20064	0235	Probation	50.00	Gift cards
Kroger	001	221149	JP Morgan Chase	9148	PSC Drug CT Grant	21919	0235	Probation	100.00	Gift cards
Walmart	001	221149	JP Morgan Chase	9145	DFMCC Drug Free LCC 22/23	30181	0235	Probation	36.00	Gift card
Walmart	001	221149	JP Morgan Chase	9145	DFMCC Drug Free LCC 22/23	30181	0235	Probation	200.00	Gift cards
Kroger	001	221149	JP Morgan Chase	9145	DFMCC Drug Free LCC 22/23	30181	0235	Probation	200.00	Gift cards
Crawfordsville Motel	001	221149	JP Morgan Chase	9145	DFMCC Drug Free LCC 22/23	30184	0235	Probation	110.00	Room for Client
1662997355245	001	221149	JP Morgan Chase	4900	Central Comms Center	30050	0303	Communications Dept (Rad	152.97	Shred It
Kroger	001	221149	JP Morgan Chase	4900	Central Comms Center	24201	0303	Communications Dept (Rad	36.20	Snacks
Frontier	001	221149	JP Morgan Chase	4900	Central Comms Center	30148	0303	Communications Dept (Rad	51.13	Mnthly service
Headsets Direct	001	221149	JP Morgan Chase	4900	Central Comms Center	44500	0303	Communications Dept (Rad	419.28	Headsets
Comcast	001	221149	JP Morgan Chase	4900	Central Comms Center	30050	0303	Communications Dept (Rad	233.70	0008935
Comcast	001	221149	JP Morgan Chase	4900	Central Comms Center	30050	0303	Communications Dept (Rad	121.25	0170347
Walmart	001	221149	JP Morgan Chase	4900	Central Comms Center	24201	0303	Communications Dept (Rad	37.97	Snacks
NENA Conference	001	221149	JP Morgan Chase	4900	Central Comms Center	33500	0303	Communications Dept (Rad	150.00	2 people x\$75
Brother's Pizza	001	221149	JP Morgan Chase	4900	Central Comms Center	33500	0303	Communications Dept (Rad	44.13	Training Lunch
Brother's Pizza	001	221149	JP Morgan Chase	4900	Central Comms Center	33500	0303	Communications Dept (Rad	34.99	Training Lunch
Mi Corcel	001	221149	JP Morgan Chase	4900	Central Comms Center	33500	0303	Communications Dept (Rad	29.59	Training Lunch
Amazon	001	221149	JP Morgan Chase	8903	Community COVID Testing Grant	22019	0610	Health Dept	331.37	Misc supplies
Amazon	001	221149	JP Morgan Chase	8903	Community COVID Testing Grant	22019	0610	Health Dept	44.55	Self ink stamp
Amazon	001	221149	JP Morgan Chase	8903	Community COVID Testing Grant	22019	0610	Health Dept	5.27	Condoms
Culvers	001	221149	JP Morgan Chase	8425	LEPC GRANT Hazd Sub & Resp	30091	9655	Emergency Response	19.93	IERC Conf.
Indianapolis Marriott East	001	221149	JP Morgan Chase	8425	LEPC GRANT Hazd Sub & Resp	30091	9655	Emergency Response	24.62	IERC Conf.
Tequila Sunrise	001	221149	JP Morgan Chase	8425	LEPC GRANT Hazd Sub & Resp	30091	9655	Emergency Response	47.24	IERC Conf.
Indianapolis Marriott East	001	221149	JP Morgan Chase	8425	LEPC GRANT Hazd Sub & Resp	30091	9655	Emergency Response	315.18	IERC Conf. SH
Indianapolis Marriott East	001	221149	JP Morgan Chase	8425	LEPC GRANT Hazd Sub & Resp	30091	9655	Emergency Response	315.18	IERC Conf. JB
Denny's	001	221149	JP Morgan Chase	8425	LEPC GRANT Hazd Sub & Resp	30091	9655	Emergency Response	38.10	Conference
130404698	001	221208	Kara Dawn Lesko	1191	Riverboat	31123	0068	County Commissioners	34.24	Topline Reimb
Election 2022	001	035469	Karen Gunther	1000	General	11314	0104	Election Expense	60.00	Poll Judge
Election 2022	001	221156	Ken Barclay	1000	General	11314	0104	Election Expense	60.00	Poll Judge
S112164528.002	001	035567	Kirby Risk Corporation	4950	Sheriff Work Release	24202	0005	County Sheriff	652.54	Lighting
S112200550.001	001	035567	Kirby Risk Corporation	4950	Sheriff Work Release	24202	0005	County Sheriff	67.48	Lighting
S112170479.003	001	035567	Kirby Risk Corporation	4950	Sheriff Work Release	24202	0005	County Sheriff	78.50	Lighting

## 10252022-11142022 Docket.xlsx

Invoice	Bank	Check	Payee Name 1	Fund	Fund Desc	Acct	Loc	Loc Desc	Amount	Comment
5112170479.001		001 035567	Kirby Risk Corporation	4950	Sheriff Work Release	24202	0005	County Sheriff	555.17	Lighting
5112221770.001		001 035567	Kirby Risk Corporation	4950	Sheriff Work Release	24202	0005	County Sheriff	323.68	Lighting
5112224084.001		001 035567	Kirby Risk Corporation	4950	Sheriff Work Release	24202	0005	County Sheriff	444.48	Lighting
670		001 035567	Kirby Risk Corporation	1176	Motor Vehicle Highway	23523	0529	County Highway	30.44	
130450091		001 221209	Kirsten Sutherlin	1191	Riverboat	31123	0068	County Commissioners	50.00	Topline Reimb
130280514		001 221210	Kristin Lough	1191	Riverboat	31123	0068	County Commissioners	42.80	Topline Reimb
JUL-SEPT 2022 LAW ED		001 221163	Ladoga Clerk Treasurer	4976	1154 Cnty Law Enforc Cont Ed	50000	0005	County Sheriff	44.00	3Q2022
Sept 2022 Wheel/Surtax Dist		001 221186	Ladoga Clerk Treasurer	6020	0207 Wheel Tax/Surtax Combined	31200	0002	County Auditor	954.59	
2022-11LITCS		001 221242	Ladoga Clerk Treasurer	7330	LIT Local Income Tax	50000	0002	County Auditor	5517.33	NOV CERT SHARES
2022-11LITPS		001 221242	Ladoga Clerk Treasurer	7331	Lit Public Safety Fund	50000	0002	County Auditor	3826.00	NOV LIT PUB SFTY
2022-11LITCS		001 221243	Ladoga Public Library	7330	LIT Local Income Tax	50000	0002	County Auditor	1636.50	NOV CERT SHARES
Election 2022		001 035470	Lelane Luttrell	1000	General	11314	0104	Election Expense	60.00	Poll Judge
209605		001 035568	Lincoln Park Stone	1173	MVH Restricted Fund	20015	0529	County Highway	2590.40	#11 Screened
209634		001 035568	Lincoln Park Stone	1173	MVH Restricted Fund	20015	0529	County Highway	2740.64	#11 Screened
209659		001 035568	Lincoln Park Stone	1173	MVH Restricted Fund	20015	0529	County Highway	1090.30	#11 Screened
209749		001 035568	Lincoln Park Stone	1173	MVH Restricted Fund	20015	0529	County Highway	6022.81	#11 Screened
209802		001 035568	Lincoln Park Stone	1173	MVH Restricted Fund	20015	0529	County Highway	512.50	#11 Screened
130406149		001 221211	Linda McNulty	1191	Riverboat	31123	0068	County Commissioners	34.24	Topline Reimb
2022-11LITCS		001 221244	Linden Public Library	7330	LIT Local Income Tax	50000	0002	County Auditor	2531.67	NOV CERT SHARES
130154889		001 221212	Lindsey Villalpando	1191	Riverboat	31123	0068	County Commissioners	47.08	Topline Reimb
Election 2022		001 035471	LuAnn Hampton	1000	General	11314	0104	Election Expense	120.00	Poll Judge
42442		001 221164	Luna Language Services	1000	General	30051	0201	Superior Court #1	843.75	Interpreter Svcs
42443		001 221164	Luna Language Services	1000	General	30051	0232	Circuit Court	484.59	Svcs on 9/27/22
42443		001 221164	Luna Language Services	1000	General	30062	0232	Circuit Court	59.16	Svcs on 9/27/22
42441		001 221178	Luna Language Services	1000	General	30051	0202	Superior Court #2	300.00	Interpreter Svcs
5940062422		001 035490	M.A.I.L., Inc.	1000	General	30034	0068	County Commissioners	2997.56	June Postage
5940072922		001 035490	M.A.I.L., Inc.	1000	General	30034	0068	County Commissioners	3796.37	July Postage
2022-11LITCS		001 221245	Madison Township Trustee	7330	LIT Local Income Tax	50000	0002	County Auditor	5147.67	NOV CERT SHARES
130371213		001 221213	Marc Bonwell	1191	Riverboat	31123	0068	County Commissioners	50.00	Topline Reimb
Jury1012		001 035386	Marchel M. French	1000	General	30047	0201	Superior Court #1	24.80	appeared
Election 2022		001 035472	Marge Benge	1000	General	11314	0104	Election Expense	60.00	Poll Judge
130258910		001 221214	Mary Jane Meadows	1191	Riverboat	31123	0068	County Commissioners	50.00	Topline Reimb
4817		001 035491	Maxwell Farm Drainage Inc	2600	Drain Construction/Reconst	65064	0006	County Surveyor	757385.00	Recon Peterson
4818		001 035491	Maxwell Farm Drainage Inc	2600	Drain Construction/Reconst	65064	0006	County Surveyor	5400.00	Recon Peterson
4819		001 035491	Maxwell Farm Drainage Inc	2600	Drain Construction/Reconst	65276	0006	County Surveyor	113332.00	Recon Schoen
4844		001 035491	Maxwell Farm Drainage Inc	2700	Drainage Maintenance	65003	0006	County Surveyor	15050.00	715 J Harris
4845		001 035491	Maxwell Farm Drainage Inc	2600	Drain Construction/Reconst	65209	0006	County Surveyor	3694.48	652 A McClamroch
4845		001 035491	Maxwell Farm Drainage Inc	2700	Drainage Maintenance	65209	0006	County Surveyor	4865.52	652 A McClamroch
		001 ACH	McCready & Keene	5100	0300 Payroll Clearing	00023	0000	No Department	1852.85	DDClr-SHERIFFVOL
		001 ACH	McCready & Keene	5100	0300 Payroll Clearing	00051	0000	No Department	307.14	DDClr-CIV457%
		001 ACH	McCready & Keene	5100	0300 Payroll Clearing	00030	0000	No Department	400.00	DDClr-SHROTH
		001 ACH	McCready & Keene	5100	0300 Payroll Clearing	00023	0000	No Department	1852.85	DDClr-SHERIFFVOL
		001 ACH	McCready & Keene	5100	0300 Payroll Clearing	00051	0000	No Department	307.14	DDClr-CIV457%
		001 ACH	McCready & Keene	5100	0300 Payroll Clearing	00030	0000	No Department	400.00	DDClr-SHROTH
130152534		001 221215	Melissa Caldwell	1191	Riverboat	31123	0068	County Commissioners	42.80	Topline Reimb
Jury1012		001 035387	Melodie S. Newlin	1000	General	30047	0201	Superior Court #1	91.76	served

## 10252022-11142022 Docket.xlsx

Invoice	Bank	Check	Payee Name 1	Fund	Fund Desc	Acct	Loc	Loc Desc	Amount	Comment
Division 0002	001	035504	Metropolitan Life Insurance Co	5100	0300 Payroll Clearing	00040	0000	No Department	796.03	Supp Life
Division 0002	001	035504	Metropolitan Life Insurance Co	5100	0300 Payroll Clearing	00016	0000	No Department	6949.82	Dental/Vision
Division 0003	001	035504	Metropolitan Life Insurance Co	1000	General	12080	0068	County Commissioners	6326.03	
Division 0001	001	035504	Metropolitan Life Insurance Co	1000	General	12055	0068	County Commissioners	687.54	
130414574	001	221216	Michael Davis	1191	Riverboat	31123	0068	County Commissioners	50.00	Topline Reimb
130414574	001	221263	Michael Davis	4915	Mapping Fees	22030	0753	GIS/Mapping	49.51	Topline
Jury1012	001	035388	Michelle E. Peterson	1000	General	30047	0201	Superior Court #1	16.47	appeared
Election 2022	001	035473	Mike Reidy	1000	General	11314	0104	Election Expense	60.00	Poll Judge
Amazon	001	221165	Mindy Byers	1191	Riverboat	31123	0068	County Commissioners	78.04	Bicntnl Frames
129855262	001	221217	Mindy Byers	1191	Riverboat	31123	0068	County Commissioners	50.00	Topline Reimb
2216-Final	001	221166	Mitsch Design, Inc	1191	Riverboat	30050	0068	County Commissioners	3606.25	Move Safe
Mileage	001	035533	Monica Nagele	1000	General	30001	0011	Cnty Coop Extension Svcs	85.26	Oct 2022
Amazon	001	035569	Mont Cnty Soil & Water Conserv	1000	General	24201	0750	Soil Conservation (Soil & Wate	51.64	Pouches
Walmart	001	035569	Mont Cnty Soil & Water Conserv	1000	General	24201	0750	Soil Conservation (Soil & Wate	2.42	Binder Rings
Meta	001	035569	Mont Cnty Soil & Water Conserv	1000	General	30800	0750	Soil Conservation (Soil & Wate	100.50	Advertisement
Sept 2022 Wheel/Surtax Dist	001	035516	Mont Cnty Treasurer	6020	0207 Wheel Tax/Surtax Combined	31200	0002	County Auditor	65541.00	
2022-11LITPS	001	035549	Mont Cnty Treasurer	7331	Lit Public Safety Fund	50000	0002	County Auditor	226494.25	NOV LIT PUB SFTY
	001	035549	Mont Cnty Treasurer	7330	UT Local Income Tax	50000	0002	County Auditor	326622.40	
4th Qtr CCC	001	035570	Mont Cnty Treasurer	1000	General	30093	0068	County Commissioners	116250.00	
	001	ACH	Mont Cnty Treasurer	5100	0300 Payroll Clearing	00027	0000	No Department	2886.52	DDCIR-HSA-VOL
	001	ACH	Mont Cnty Treasurer	5100	0300 Payroll Clearing	00027	0000	No Department	2886.52	DDCIR-HSA-VOL
	001	ACH	Mont Cnty Treasurer	1000	General	12065	0068	County Commissioners	3375.45	DDCIR-HSASaving
	001	ACH	Mont Cnty Treasurer	1000	General	12065	0068	County Commissioners	3375.45	DDCIR-HSASaving
	001	ACH	Mont Cnty Treasurer	1222	Statewide 911	12065	0303	Communications Dept (Rad	201.95	DDCIR-HSASaving
	001	ACH	Mont Cnty Treasurer	4900	Central Comms Center	12065	0303	Communications Dept (Rad	115.40	DDCIR-HSASaving
	001	ACH	Mont Cnty Treasurer	1222	Statewide 911	12065	0303	Communications Dept (Rad	201.95	DDCIR-HSASaving
	001	ACH	Mont Cnty Treasurer	4900	Central Comms Center	12065	0303	Communications Dept (Rad	144.25	DDCIR-HSASaving
	001	ACH	Mont Cnty Treasurer	1176	Motor Vehicle Highway	12065	0529	County Highway	750.10	DDCIR-HSASaving
	001	ACH	Mont Cnty Treasurer	1176	Motor Vehicle Highway	12065	0529	County Highway	750.10	DDCIR-HSASaving
Oct 2022	001	035571	Montgomery Co Commissioners	9177	FY22 DOC DRUG CT GRANT	12005	0235	Probation	329.33	Reimb FICA EC
Oct 2022	001	035571	Montgomery Co Commissioners	9177	FY22 DOC DRUG CT GRANT	12005	0235	Probation	482.16	Reimb INPRS EC
Oct 2022	001	035571	Montgomery Co Commissioners	9177	FY22 DOC DRUG CT GRANT	12050	0235	Probation	725.86	Reimb GRP INS EC
Oct 2022	001	035571	Montgomery Co Commissioners	9144	FY22 Veterans Treatment Ct Grt	12005	0235	Probation	428.60	Reimb FICA JY
Oct 2022	001	035571	Montgomery Co Commissioners	9144	FY22 Veterans Treatment Ct Grt	12005	0235	Probation	627.48	Reimb INPRS JY
Oct 2022	001	035571	Montgomery Co Commissioners	9144	FY22 Veterans Treatment Ct Grt	12050	0235	Probation	725.86	Reimb GRP INS JY
Oct 2022	001	035571	Montgomery Co Commissioners	9106	FY22 Family Recovery Ct Grt	12005	0235	Probation	405.28	Reimb FICA RO
Oct 2022	001	035571	Montgomery Co Commissioners	9106	FY22 Family Recovery Ct Grt	12005	0235	Probation	593.34	Reimb INPRS RO
Oct 2022	001	035571	Montgomery Co Commissioners	9106	FY22 Family Recovery Ct Grt	12050	0235	Probation	725.86	Reimb GRP INS RO
2022-9 Crawfordsville Comm	001	035534	Montgomery Co Education Founda	7301	1165 Ed Plates Fees	50000	0002	County Auditor	18.75	
	001	ACH	Montgomery Co Self-Insurance	9131	JCAP 2020-01 Grant (Women's)	12050	0005	County Sheriff	689.41	DDCIR-GPAHEALTHC
	001	ACH	Montgomery Co Self-Insurance	9131	JCAP 2020-01 Grant (Women's)	12050	0005	County Sheriff	689.41	DDCIR-GPAHEALTHC
	001	ACH	Montgomery Co Self-Insurance	1000	General	12050	0068	County Commissioners	47216.21	DDCIR-GPAHEALTHC
	001	ACH	Montgomery Co Self-Insurance	1000	General	12050	0068	County Commissioners	47551.22	DDCIR-GPAHEALTHC
	001	ACH	Montgomery Co Self-Insurance	1222	Statewide 911	12050	0303	Communications Dept (Rad	2688.69	DDCIR-GPAHEALTHC
	001	ACH	Montgomery Co Self-Insurance	4900	Central Comms Center	12050	0303	Communications Dept (Rad	1340.04	DDCIR-GPAHEALTHC
	001	ACH	Montgomery Co Self-Insurance	1222	Statewide 911	12050	0303	Communications Dept (Rad	2688.69	DDCIR-GPAHEALTHC

## 10252022-11142022 Docket.xlsx

Invoice	Bank	Check	Payee Name 1	Fund	Fund Desc	Acct	Loc	Loc Desc	Amount	Comment
	001	ACH	Montgomery Co Self-Insurance	4900	Central Comms Center	12050	0303	Communications Dept (Rad	1340.04	DDCIR-GPAHEALTHC
	001	ACH	Montgomery Co Self-Insurance	1176	Motor Vehicle Highway	12050	0529	County Highway	10304.92	DDCIR-GPAHEALTHC
	001	ACH	Montgomery Co Self-Insurance	1176	Motor Vehicle Highway	12050	0529	County Highway	10304.92	DDCIR-GPAHEALTHC
	001	ACH	Montgomery Co Self-Insurance	8300	SUPP PH WORKFORCE GRT 93.354	12050	0610	Health Dept	335.01	DDCIR-GPAHEALTHC
	001	ACH	Montgomery Co Self-Insurance	8300	SUPP PH WORKFORCE GRT 93.354	12050	0610	Health Dept	335.01	DDCIR-GPAHEALTHC
10262022	001	035572	Montgomery County Probation	9148	PSC Drug CT Grant	30152	0235	Probation	600.00	Chem Testing
	002	ACH	Nationwide	5100	0300 Payroll Clearing	00015	0000	No Department	3391.94	PR 102122
PR 110422	002	ACH	Nationwide	5100	0300 Payroll Clearing	00015	0000	No Department	3405.41	
SI-131309	001	035573	Nelson & Co	1000	General	22030	0380	Jail	129.99	Side Zip boots
Sept 2022 Wheel/Surtax Dist	001	221187	New Richmond Clk Treasurer	6020	0207 Wheel Tax/Surtax Combined	31200	0002	County Auditor	376.63	
2022-11LITPS	001	221246	New Richmond Clk Treasurer	7331	Lit Public Safety Fund	50000	0002	County Auditor	1631.00	NOV LIT PUB SFTY
	001	221246	New Richmond Clk Treasurer	7330	LIT Local Income Tax	50000	0002	County Auditor	2352.00	
Sept 2022 Wheel/Surtax Dist	001	221188	New Ross Clk Treasurer	6020	0207 Wheel Tax/Surtax Combined	31200	0002	County Auditor	335.22	
2022-11LITCS	001	221247	New Ross Clk Treasurer	7330	LIT Local Income Tax	50000	0002	County Auditor	1069.42	NOV CERT SHARES
2022-11LITPS	001	221247	New Ross Clk Treasurer	7331	Lit Public Safety Fund	50000	0002	County Auditor	741.58	NOV LIT PUB SFTY
130409780	001	221218	Nicholas Hedrick	1191	Riverboat	31123	0068	County Commissioners	50.00	Topline Reimb
130271709	001	221219	Nichole Laplaunt	1191	Riverboat	31123	0068	County Commissioners	49.22	Topline Reimb
129605911	001	221220	Nicole L Ratcliff	1191	Riverboat	31123	0068	County Commissioners	50.00	Topline Reimb
Election 2022	001	035474	Norm Reimondo	1000	General	11314	0104	Election Expense	120.00	Poll Judge
184547	001	035574	Pearson Ford	1170	LIT Public Safety-Cnty Share	30100	0005	County Sheriff	245.63	Kit/Rotor
130258593	001	221221	Peggy Grayson	1191	Riverboat	31123	0068	County Commissioners	50.00	Topline Reimb
820077001	001	035575	Pomp's Tire Service Inc.	1176	Motor Vehicle Highway	33450	0529	County Highway	62.00	Dmnt/mnt tires
Pre Trial	001	035576	Pre Trial Diversion	7457	1152 Clk User Fee	50000	0001	Clerk of Circuit	3778.00	Sept 2022
AZH9695001	001	035577	Prime Body & Paint	1000	General	30087	0068	County Commissioners	1000.00	Deductible
BC10-20221013	001	035492	Proactive MSO, LLC	1000	General	13000	0068	County Commissioners	14955.63	Sept Mgmt Fee
	001	ACH	Public Empls Retirement Fd	5100	0300 Payroll Clearing	00011	0000	No Department	1691.50	DDCIR-INPRS-HWY
	001	ACH	Public Empls Retirement Fd	5100	0300 Payroll Clearing	00011	0000	No Department	8040.80	DDCIR-INPRS
	001	ACH	Public Empls Retirement Fd	5100	0300 Payroll Clearing	00011	0000	No Department	320.13	DDCIR-PERFVOL2
	001	ACH	Public Empls Retirement Fd	5100	0300 Payroll Clearing	00011	0000	No Department	1963.06	DDCIR-PERFVOL
	001	ACH	Public Empls Retirement Fd	5100	0300 Payroll Clearing	00011	0000	No Department	1654.16	DDCIR-INPRS-HWY
	001	ACH	Public Empls Retirement Fd	5100	0300 Payroll Clearing	00011	0000	No Department	7914.60	DDCIR-INPRS
	001	ACH	Public Empls Retirement Fd	5100	0300 Payroll Clearing	00011	0000	No Department	320.13	DDCIR-PERFVOL2
	001	ACH	Public Empls Retirement Fd	5100	0300 Payroll Clearing	00011	0000	No Department	1881.50	DDCIR-PERFVOL
	001	ACH	Public Empls Retirement Fd	9131	JCAP 2020-01 Grant (Women's)	12020	0005	County Sheriff	154.00	DDCIR-INPRS
	001	ACH	Public Empls Retirement Fd	9131	JCAP 2020-01 Grant (Women's)	12020	0005	County Sheriff	154.00	DDCIR-INPRS
	001	ACH	Public Empls Retirement Fd	1000	General	12020	0068	County Commissioners	24142.66	DDCIR-INPRS
	001	ACH	Public Empls Retirement Fd	1000	General	12020	0068	County Commissioners	24399.08	DDCIR-INPRS
	001	ACH	Public Empls Retirement Fd	1222	Statewide 911	12005	0303	Communications Dept (Rad	2090.29	DDCIR-INPRS
	001	ACH	Public Empls Retirement Fd	4900	Central Comms Center	12005	0303	Communications Dept (Rad	2334.37	DDCIR-INPRS
	001	ACH	Public Empls Retirement Fd	1222	Statewide 911	12005	0303	Communications Dept (Rad	2277.12	DDCIR-INPRS
	001	ACH	Public Empls Retirement Fd	4900	Central Comms Center	12005	0303	Communications Dept (Rad	1575.53	DDCIR-INPRS
	001	ACH	Public Empls Retirement Fd	1176	Motor Vehicle Highway	12020	0529	County Highway	6314.94	DDCIR-INPRS-HWY
	001	ACH	Public Empls Retirement Fd	1176	Motor Vehicle Highway	12020	0529	County Highway	6175.58	DDCIR-INPRS-HWY
	001	ACH	Public Empls Retirement Fd	1159	Health	12020	0610	Health Dept	871.11	DDCIR-INPRS
	001	ACH	Public Empls Retirement Fd	1206	Local Health Dep Trust Acct	12020	0610	Health Dept	122.77	DDCIR-INPRS
	001	ACH	Public Empls Retirement Fd	8300	SUPP PH WORKFORCE GRT 93.354	12020	0610	Health Dept	148.62	DDCIR-INPRS

## 10252022-11142022 Docket.xlsx

Invoice	Bank	Check	Payee Name 1	Fund	Fund Desc	Acct	Loc	Loc Desc	Amount	Comment
	001	ACH	Public Empls Retirement Fd	8120	Phep Grant 18/19 Clda 93.074	12020	0610	Health Dept	155.08	DDCIR-INPRS
	001	ACH	Public Empls Retirement Fd	1159	Health	12020	0610	Health Dept	715.59	DDCIR-INPRS
	001	ACH	Public Empls Retirement Fd	1206	Local Health Dep Trust Acct	12020	0610	Health Dept	122.77	DDCIR-INPRS
	001	ACH	Public Empls Retirement Fd	8300	SUPP PH WORKFORCE GRT 93.354	12020	0610	Health Dept	148.62	DDCIR-INPRS
	001	ACH	Public Empls Retirement Fd	8120	Phep Grant 18/19 Clda 93.074	12020	0610	Health Dept	155.08	DDCIR-INPRS
400124788	001	035535	Purdue University	1000	General	44400	0011	Cnty Coop Extension Svcs	34.00	July MIFI
400126506	001	035535	Purdue University	1000	General	44400	0011	Cnty Coop Extension Svcs	34.00	Aug MIFI
6013	001	035578	PUTNAM COUNTY AGGREGATES INC	1135	Cumulative Bridge	24202	0529	County Highway	1533.36	#53 Stone
INV5761	001	035536	Quality Correctional Care, LLC	1000	General	30118	0380	Jail	28.78	Blood pres set
INV5664	001	035579	Quality Correctional Care, LLC	1000	General	30118	0380	Jail	25708.33	Dec 2022
INV5724	001	035579	Quality Correctional Care, LLC	1000	General	30118	0380	Jail	60.45	Sept Meds
28093343 Acct 5563509	001	221167	Quill Corp	1000	General	24201	0011	Cnty Coop Extension Svcs	110.64	Tissue, utensils
28006984	001	221167	Quill Corp	1000	General	24202	0379	Security Center	152.40	Misc supplies
28124563	001	221167	Quill Corp	1000	General	24202	0379	Security Center	347.60	Misc supplies
28124563	001	221167	Quill Corp	1000	General	24201	0380	Jail	16.36	Misc supplies
27448696 Acct 6220663	001	221167	Quill Corp	1000	General	24202	9616	IT	155.58	Misc supplies
28123749	001	221179	Quill Corp	1000	General	24201	0009	Prosecuting Attorney	31.49	Wireless Present
28179889	001	221179	Quill Corp	1000	General	24201	0009	Prosecuting Attorney	259.99	Info visim
27975556	001	221179	Quill Corp	1000	General	24201	0202	Superior Court #2	143.81	Env/Pens/Etc
28342354 Acct 8511223	001	221179	Quill Corp	1000	General	24201	0271	Public Defender	59.95	Flash Drive's
28146426 Acct 5501662	001	221229	Quill Corp	4950	Sheriff Work Release	24201	0005	County Sheriff	78.27	Envelopes
28407637 Acct 5501662	001	221229	Quill Corp	1192	Sex & Violent Offender Admin	24202	0005	County Sheriff	17.99	Cable
28542311 Acct 5501662	001	221229	Quill Corp	1192	Sex & Violent Offender Admin	24202	0005	County Sheriff	325.33	Misc
28388394 Acct 5563509	001	221229	Quill Corp	1000	General	24201	0011	Cnty Coop Extension Svcs	21.98	Straws
28301008 Acct 5563509	001	221229	Quill Corp	1000	General	24201	0011	Cnty Coop Extension Svcs	152.18	Paper
28312602 Acct 5563509	001	221229	Quill Corp	1000	General	24201	0011	Cnty Coop Extension Svcs	21.26	Paper
28092460	001	221229	Quill Corp	4900	Central Comms Center	24201	0303	Communications Dept (Rad	82.95	Misc supplies
28386674 Acct 5501662	001	221229	Quill Corp	1000	General	24202	0380	Jail	125.97	Paper
28386312	001	221229	Quill Corp	1000	General	20001	0380	Jail	314.98	Gloves
28386674 Acct 5501662	001	221229	Quill Corp	1000	General	20001	0380	Jail	908.95	Gloves
130453747	001	221222	Racheal Oldham	1191	Riverboat	31123	0068	County Commissioners	50.00	Topline Reimb
249935	001	035580	RA-Comm Inc	1170	LIT Public Safety-Cnty Share	21961	0005	County Sheriff	178.00	Mic
109194	001	035493	Rapid Reproductions Inc.	4915	Mapping Fees	30143	0753	GIS/Mapping	80.92	Monthly Fee
01585520229	001	035494	Redwood Toxicology Laboratory	4950	Sheriff Work Release	30160	0005	County Sheriff	56.91	Medical Screens
782613	001	035581	Redwood Toxicology Laboratory	2100	Supplemental Adult Prob Svcs	30152	0235	Probation	100.00	Instant Screens
782613	001	035581	Redwood Toxicology Laboratory	9106	FY22 Family Recovery Ct Grt	20065	0235	Probation	50.00	Instant Screens
0786-000613406	001	035495	Republic Services #786	1000	General	30035	0068	County Commissioners	57.00	Acct 0006025
0786-000613405	001	035495	Republic Services #786	1000	General	30035	0068	County Commissioners	155.00	Acct 0006022
0694-002991463	001	035495	Republic Services #786	1000	General	30035	0068	County Commissioners	44.00	Acct 0030580
0786-000613858	001	035495	Republic Services #786	1000	General	30035	0068	County Commissioners	195.00	Acct 0012889
130279634	001	221223	Rhonda Herron	1191	Riverboat	31123	0068	County Commissioners	49.22	Topline Reimb
5065673498	001	035496	Ricoh Usa Inc	1119	Clerk's Records Perpetuation	24202	0001	Clerk of Circuit	100.96	4916173
50656364321	001	035496	Ricoh Usa Inc	1197	Storm Water Reviews Engineer	30143	0006	County Surveyor	39.01	Cont 2691388
5065674665	001	035496	Ricoh Usa Inc	2100	Supplemental Adult Prob Svcs	30016	0235	Probation	75.47	4926378
5065599577	001	035496	Ricoh Usa Inc	1000	General	30016	9616	IT	14.08	Auditor0820-0919
5064744663	001	035496	Ricoh Usa Inc	1000	General	30016	9616	IT	12.60	May click



## 10252022-11142022 Docket.xlsx

Invoice	Bank	Check	Payee Name 1	Fund	Fund Desc	Acct	Loc	Loc Desc	Amount	Comment
5065219346	001	035496	Ricoh Usa Inc	1000	General	30016	9616	IT	5.82	July click
5065876454	001	035537	Ricoh Usa Inc	1197	Storm Water Reviews Engineer	30143	0006	County Surveyor	32.70	092922-102822
37172455	001	035537	Ricoh Usa Inc	2100	Supplemental Adult Prob Svcs	30016	0235	Probation	168.53	110122-113022
5065874758	001	035537	Ricoh Usa Inc	1000	General	30083	0380	Jail	252.84	072922-102822
5065874836	001	035537	Ricoh Usa Inc	1000	General	30083	0380	Jail	174.50	072922-102822
106613740	001	035538	Ricoh Usa Inc	1000	General	30016	0232	Circuit Court	100.19	110222-120122
106608958	001	035538	Ricoh Usa Inc	1000	General	30083	0380	Jail	233.88	Nov 22 Jail
2022-111LITCS	001	221248	Ripley Township Trustee	7330	LIT Local Income Tax	50000	0002	County Auditor	2251.00	NOV CERT SHARES
93022-75	001	035497	RQAW Corporation	1138	Cumulative Capital Development	30191	0068	County Commissioners	1649.25	Sept 2022
276904	001	221168	RT Insurance	1000	General	30087	0068	County Commissioners	77.00	Teague Notary
276906	001	221168	RT Insurance	1000	General	30087	0068	County Commissioners	77.00	Bushong Notary
126	001	035582	Ruth Ana Fischer	2100	Supplemental Adult Prob Svcs	30051	0235	Probation	140.00	Language Svcs
127	001	035582	Ruth Ana Fischer	2100	Supplemental Adult Prob Svcs	30051	0235	Probation	70.00	Language Svcs
398347	001	221264	Rydin	1000	General	24201	0308	Weights & Measures Inspector	202.89	2023 Stickers
Jury1012	001	035389	Samuel L. Highland. Sr.	1000	General	30047	0201	Superior Court #1	15.98	appeared
22-135 RB	001	035583	Sanders Funeral Care	1000	General	30022	0068	County Commissioners	100.00	Vet. Burial
22-98 CJ	001	035583	Sanders Funeral Care	1000	General	30022	0068	County Commissioners	100.00	Vet. Burial
22-146 DJ	001	035583	Sanders Funeral Care	1000	General	30022	0068	County Commissioners	100.00	Vet. Burial
V06904857	001	035584	Sanofi Pasteur Inc	1168	Local Health Maintenance	24202	0610	Health Dept	259.16	Tubersol
2022-111LITCS	001	221249	Scott Township Trustee	7330	LIT Local Income Tax	50000	0002	County Auditor	1120.42	NOV CERT SHARES
Jury1012	001	035390	Sean C. Taylor	1000	General	30047	0201	Superior Court #1	15.98	appeared
130356265	001	221224	Sherri Bentley	1191	Riverboat	31123	0068	County Commissioners	50.00	Topline Reimb
6002828072	001	035585	Stanley Secur Systms	1000	General	30500	0380	Jail	324.00	Remote Support
23256	001	035586	Sterling Healthcare Holdings	2100	Supplemental Adult Prob Svcs	30152	0235	Probation	150.00	Supplies
338104/1	001	035587	Stevenson's Ace Hardware	1176	Motor Vehicle Highway	44518	0529	County Highway	178.93	SHVL SQR
2022-111LITCS	001	221250	Sugar Creek Township Trustee	7330	LIT Local Income Tax	50000	0002	County Auditor	1172.58	NOV CERT SHARES
72876	001	035498	Surb's Tire	1170	LIT Public Safety-Cnty Share	30100	0005	County Sheriff	21.50	Tires/Labor
72880	001	035588	Surb's Tire	1170	LIT Public Safety-Cnty Share	30100	0005	County Sheriff	20.00	Tire Rotation
16225	001	221169	Taylor,Chadd,Minnett, ET AL	1000	General	30230	0068	County Commissioners	6141.00	Comissioners
16226	001	221169	Taylor,Chadd,Minnett, ET AL	1000	General	30230	0068	County Commissioners	1428.00	Plan Commision
16227	001	221169	Taylor,Chadd,Minnett, ET AL	1000	General	30230	0068	County Commissioners	152.00	Sheriff
16228	001	221169	Taylor,Chadd,Minnett, ET AL	1000	General	30230	0068	County Commissioners	273.00	DB Tort
16229	001	221169	Taylor,Chadd,Minnett, ET AL	1000	General	30230	0068	County Commissioners	63.00	SCAB
16231	001	221169	Taylor,Chadd,Minnett, ET AL	1000	General	30230	0068	County Commissioners	252.00	Health JM
16233	001	221169	Taylor,Chadd,Minnett, ET AL	1000	General	30230	0068	County Commissioners	42.00	Auditor
16234	001	221169	Taylor,Chadd,Minnett, ET AL	1000	General	30230	0068	County Commissioners	231.00	MH Tort
16235	001	221169	Taylor,Chadd,Minnett, ET AL	1000	General	30230	0068	County Commissioners	378.00	Wrongful Death
16236	001	221169	Taylor,Chadd,Minnett, ET AL	1000	General	30230	0068	County Commissioners	63.00	DP HSA Claim
16237	001	221169	Taylor,Chadd,Minnett, ET AL	1000	General	30230	0068	County Commissioners	42.00	Prosecutor
16239	001	221169	Taylor,Chadd,Minnett, ET AL	1000	General	30230	0068	County Commissioners	378.00	Litigation
16240	001	221169	Taylor,Chadd,Minnett, ET AL	1000	General	30230	0068	County Commissioners	189.00	Tort Claim
16241	001	221169	Taylor,Chadd,Minnett, ET AL	1000	General	30230	0068	County Commissioners	2499.00	Tort Claim
101622-111522	001	035499	TDS Telecom	4900	Central Comms Center	30148	0303	Communications Dept (Rad	835.70	823-531-2302
2022-Nov	001	035539	TDS Telecom	4900	Central Comms Center	30148	0303	Communications Dept (Rad	359.28	05315709111
Jury1012	001	035391	Terry L. Switzer	1000	General	30047	0201	Superior Court #1	99.60	served
Jury1012	001	035391	Terry L. Switzer	1000	General	30046	0201	Superior Court #1	20.00	served

## 10252022-11142022 Docket.xlsx

Invoice	Bank	Check	Payee Name 1	Fund	Fund Desc	Acct	Loc	Loc Desc	Amount	Comment
Jury1012	001	035392	Terry W. Wear	1000	General	30047	0201	Superior Court #1	89.80	served
Jury1012	001	035392	Terry W. Wear	1000	General	30046	0201	Superior Court #1	15.39	served
11140	001	221230	The Paper Of Montgomery County	1191	Riverboat	31123	0068	County Commissioners	1680.00	Q&A Solar Farms
PL4270	001	221265	The Paper Of Montgomery County	1000	General	30800	0068	County Commissioners	15.55	Vacate
PL4479	001	221265	The Paper Of Montgomery County	1000	General	30800	0068	County Commissioners	104.97	Bidders
0000286	001	221170	The Schneider Geospatial Llc	1000	General	30095	9616	IT	2136.00	2nd Qtr
0000182	001	221231	The Schneider Geospatial Llc	1000	General	30095	9616	IT	336.00	Hosting Jul-Dec
Jury1012	001	035393	Thomas L. Melvin	1000	General	30047	0201	Superior Court #1	17.45	appeared
Jury1012	001	035394	Timothy J. Thomas	1000	General	30047	0201	Superior Court #1	15.49	appeared
Jury1012	001	035395	Timothy W. Sanders	1000	General	30047	0201	Superior Court #1	17.45	appeared
Jury1012	001	035396	Tina L. Spears	1000	General	30047	0201	Superior Court #1	22.35	appeared
Jury1012	001	035397	Todd B Jones	1000	General	30047	0201	Superior Court #1	16.47	appeared
Sept 2022	001	221171	Town Of Linden	4976	1154 Cnty Law Enforc Cont Ed	50000	0005	County Sheriff	4.00	Law Ed
Sept 2022 Wheel/Surtax Dist	001	221189	Town Of Linden	6020	0207 Wheel Tax/Surtax Combined	31200	0002	County Auditor	636.93	
Sept 2021 Law Ed	001	221232	Town Of Linden	4976	1154 Cnty Law Enforc Cont Ed	50000	0005	County Sheriff	4.00	
2022-11LITCS	001	221251	Town Of Linden	7330	LIT Local Income Tax	50000	0002	County Auditor	2439.33	NOV CERT SHARES
	001	221251	Town Of Linden	7331	LIT Public Safety Fund	50000	0002	County Auditor	1691.50	
Sept 2022 Wheel/Surtax Dist	001	221190	Town Of New Market	6020	0207 Wheel Tax/Surtax Combined	31200	0002	County Auditor	493.52	
2022-11LITCS	001	221252	Town Of New Market	7330	LIT Local Income Tax	50000	0002	County Auditor	1883.42	NOV CERT SHARES
2022-11LITPS	001	221252	Town Of New Market	7331	LIT Public Safety Fund	50000	0002	County Auditor	1306.08	NOV LIT PUB SFTY
Sept 2022 Wheel/Surtax Dist	001	221191	Town Of Waveland	6020	0207 Wheel Tax/Surtax Combined	31200	0002	County Auditor	385.69	
2022-11LITCS	001	221253	Town Of Waveland	7330	LIT Local Income Tax	50000	0002	County Auditor	1073.67	NOV CERT SHARES
2022-11LITPS	001	221253	Town Of Waveland	7331	LIT Public Safety Fund	50000	0002	County Auditor	744.50	NOV LIT PUB SFTY
060-113902	001	035540	Tyler Technologies Inc	1224	Reassessment	30146	0008	County Assessor	4375.00	Installment 3
154693466	001	035589	Uline	1170	LIT Public Safety-Cnty Share	44500	0005	County Sheriff	2408.88	Chairs
2022-11LITCS	001	035550	Union Township Trustee	7330	LIT Local Income Tax	50000	0002	County Auditor	16633.42	NOV CERT SHARES
22220506	001	035514	US Aggregates Inc	1173	MVH Restricted Fund	20015	0529	County Highway	246.51	#4 Stone
484874862	001	035541	US Bank Equipment Finance	1000	General	30016	9616	IT	565.53	Sept/Oct Assesso
170539	001	035500	US Uniform Supply	1000	General	22030	0380	Jail	139.90	Uniform
170766	001	035590	US Uniform Supply	1170	LIT Public Safety-Cnty Share	44524	0005	County Sheriff	1792.85	Shooter Kit
16625	001	221172	USI Consultants	1138	Cumulative Capital Development	30191	0068	County Commissioners	3500.00	20215303
16621	001	221172	USI Consultants	1138	Cumulative Capital Development	30191	0068	County Commissioners	1750.00	Concrete Rehab
16605	001	221172	USI Consultants	1138	Cumulative Capital Development	30191	0068	County Commissioners	12000.00	Paser Eval
16847	001	221180	USI Consultants	1138	Cumulative Capital Development	30191	0068	County Commissioners	3000.00	PASER
80864	001	035542	VA & F Financial Inc	1159	Health	30016	0610	Health Dept	107.41	100122-103122
000102	001	221173	Valley Oaks Health Inc	9131	JCAP 2020-01 Grant (Women's)	37003	0005	County Sheriff	4892.25	JCAP Svcs
000101	001	221173	Valley Oaks Health Inc	1000	General	20450	0380	Jail	3489.75	JCAP Svcs (Men)
540243 Acct 510714	001	221181	Van Ausdall & Farrar	1176	Motor Vehicle Highway	30194	0529	County Highway	58.67	Hwy
541674	001	221233	Van Ausdall & Farrar	1000	General	30016	0201	Superior Court #1	56.17	101322-111222
542943	001	221233	Van Ausdall & Farrar	1159	Health	30800	0610	Health Dept	170.74	092922-102822
243659	001	035591	Vanco	1000	General	30083	0380	Jail	379.97	Labor Refrig
INV5399	001	035501	Vaxcare	8903	Community COVID Testing Grant	32019	0610	Health Dept	888.09	June 2022
INV6014	001	035501	Vaxcare	8903	Community COVID Testing Grant	32019	0610	Health Dept	876.47	July 2022
INV6756	001	035501	Vaxcare	8903	Community COVID Testing Grant	32019	0610	Health Dept	140.76	September 2022
w/e 10/21/2022	001	221174	Ventanex, Inc	1000	General	12060	0068	County Commissioners	106.80	
w/e 10/21/2022	001	221174	Ventanex, Inc	4700	Self Insurance	00033	0068	County Commissioners	13762.82	

## 10252022-11142022 Docket.xlsx

Invoice	Bank	Check	Payee Name 1	Fund	Fund Desc	Acct	Loc	Loc Desc	Amount	Comment
W/E 10/28/22	001	221194	Ventanex, Inc	1000	General	12060	0068	County Commissioners	475.66	
W/E 10/28/22	001	221194	Ventanex, Inc	4700	Self Insurance	00033	0068	County Commissioners	5367.21	
	001	221254	Ventanex, Inc	4700	Self Insurance	00033	0068	County Commissioners	30558.20	w/e 110422
	001	221254	Ventanex, Inc	1000	General	12060	0068	County Commissioners	757.98	w/e 110422
Election 2022	001	035475	Vicke Hudson-Swisher	1000	General	11314	0104	Election Expense	120.00	Poll Judge
Jury1012	001	035398	Vicki L. Hendrick	1000	General	30047	0201	Superior Court #1	15.98	appeared
Jury1012	001	035399	Victoria P. Funkhouser	1000	General	30047	0201	Superior Court #1	109.40	served
Jury1012	001	035399	Victoria P. Funkhouser	1000	General	30046	0201	Superior Court #1	11.12	served
2022-11LITCS	001	221255	Walnut Township Trustee	7330	LIT Local Income Tax	50000	0002	County Auditor	1217.42	NOV CERT SHARES
35781	001	035592	Walt's Service	1170	LIT Public Safety-Cnty Share	30100	0005	County Sheriff	113.36	Fan Repair
35790	001	035592	Walt's Service	1170	LIT Public Safety-Cnty Share	30100	0005	County Sheriff	66.04	Light Bulb
Jury1012	001	035400	Wanda M. King	1000	General	30047	0201	Superior Court #1	16.96	appeared
2022-11LITCS	001	221256	Waveland Public Library	7330	LIT Local Income Tax	50000	0002	County Auditor	2404.33	NOV CERT SHARES
2022-11LITCS	001	221257	Wayne Township Trustee	7330	LIT Local Income Tax	50000	0002	County Auditor	1374.50	NOV CERT SHARES
Sept 2022 Wheel/Surtax Dist	001	221192	Waynetown Clerk Treasurer	6020	0207 Wheel Tax/Surtax Combined	31200	0002	County Auditor	850.90	
2022-11LITCS	001	221258	Waynetown Clerk Treasurer	7330	LIT Local Income Tax	50000	0002	County Auditor	2837.50	NOV CERT SHARES
2022-11LITPS	001	221258	Waynetown Clerk Treasurer	7331	Lit Public Safety Fund	50000	0002	County Auditor	1967.67	NOV LIT PUB SFTY
106554564	001	035502	Wells Fargo Financial	1000	General	30016	9616	IT	104.74	101622-111522
106493102	001	035502	Wells Fargo Financial	1000	General	30016	9616	IT	85.98	082422-092322
106577429	001	035502	Wells Fargo Financial	1000	General	30016	9616	IT	85.98	0924-102322
106633135	001	035543	Wells Fargo Financial	1000	General	30016	0271	Public Defender	259.23	081222-111122
MontG002	001	035515	West Side Tractor Sales	1173	MVH Restricted Fund	44500	0529	County Highway	5100.00	Roller Rental
81136A	001	035515	West Side Tractor Sales	1176	Motor Vehicle Highway	44502	0529	County Highway	50000.00	JD Loader
00242129	001	035593	Widmer Time Recorder	1159	Health	24202	0610	Health Dept	414.39	Seal Embosser
Sept 2022 Wheel/Surtax Dist	001	221193	Wingate Clk Treasurer	6020	0207 Wheel Tax/Surtax Combined	31200	0002	County Auditor	246.22	
2022-11LITCS	001	221259	Wingate Clk Treasurer	7330	LIT Local Income Tax	50000	0002	County Auditor	1834.67	NOV CERT SHARES
2022-11LITPS	001	221259	Wingate Clk Treasurer	7331	Lit Public Safety Fund	50000	0002	County Auditor	1272.25	NOV LIT PUB SFTY
<b>TOTAL FOR PERIOD:</b>									<b>\$3,743,048.75</b>	

# Claims: Payroll 10/21/22

Wednesday, November 9, 2022

5:03 PM

# Printout

Wednesday, November 9, 2022 5:17 PM

Distribution Report - Employee Name/Budget Account Code  
Check Date: 10/21/2022 Normal

Montgomery Count

Employee Name	Pay Record	Current Pay Group	History Pay Group	Current Benefit Group	History Benefit Group	Amount	Budget Account Code	Current Pay Type	History Pay Type
Stadler, Mia R	Pay 01	Salary	Salary	HD	HD	1,326.92	1159.11061.000.0610	Salary	Salary
Northcutt, Greg A	Pay 01	Salary	Salary	Commissioners	Commissioners	1,602.62	1000.11983.000.0313	Salary	Salary
Clouser, Brooke E	Pay 01	Salary	Salary	CCC 1222	CCC 1222	2,008.00	1222.11730.000.0303	Salary	Salary
Kirby, Jared R	Pay 01	Salary	Salary	Commissioners	Commissioners	193.18	1170.11021.000.0005	Salary	Salary
Kirby, Jared R	Pay 01	Salary	Salary	Commissioners	Commissioners	2,211.54	1170.11935.000.0005	Salary	Salary
Berry, Caleb T	Pay 01	Salary	Salary	Commissioners	Commissioners	727.14	1170.11021.000.0005	Salary	Salary
Berry, Caleb T	Pay 01	Salary	Salary	Commissioners	Commissioners	1,986.54	1170.11222.000.0005	Salary	Salary
Hines, Sarah A	Pay 01	Salary	Salary	CCC 1222	CCC 1222	181.36	1222.11021.000.0303	Salary	Salary
Hines, Sarah A	Pay 01	Salary	Salary	CCC 1222	CCC 1222	2,341.42	1222.11303.000.0303	Salary	Salary
Andel, Jennifer J	Pay 01	Salary	Salary	Commissioners	Commissioners	2,518.27	1000.11100.000.0002	Salary	Salary
Wiles, Courtney D	Pay 01	Salary	Salary	Statewide 911	Statewide 911	192.06	4900.11021.000.0303	Salary	Salary
Wiles, Courtney D	Pay 01	Salary	Salary	Statewide 911	Statewide 911	3,425.85	4900.11830.000.0303	Salary	Salary
Douglas, Karyn D	Pay 01	Salary	Salary	Commissioners	Commissioners	1,933.81	1000.11100.000.0001	Salary	Salary
Garing, Dylan J	Pay 01	Salary	Salary	Commissioners	Commissioners	1,546.85	1000.11492.000.0380	Salary	Salary
Foxworthy, Mason L	Pay 01	Salary	Salary	Commissioners	Commissioners	180.30	1000.11021.000.0380	Salary	Salary
Foxworthy, Mason L	Pay 01	Salary	Salary	Commissioners	Commissioners	1,346.15	1000.11328.000.0380	Salary	Salary
Ratcliff, Nicole L	Pay 01	Salary	Salary	Commissioners	Commissioners	1,600.62	1000.11503.000.0002	Salary	Salary
McCarty, Matt P	Pay 01	Salary	Salary	Commissioners	Commissioners	3,241.96	1170.11205.000.0005	Salary	Salary
Laplaunt, Nichole E	Pay 01	Salary	Salary	Commissioners	Commissioners	1,937.25	4905.11125.000.0235	Salary	Salary

Distribution Report - Employee Name/Budget Account Code  
Check Date: 10/21/2022 Normal

Montgomery Count

Employee Name	Pay Record	Current Pay Group	History Pay Group	Current Benefit Group	History Benefit Group	Amount	Budget Account Code	Current Pay Type	History Pay Type
Watson, Jacob M	Pay 01	Salary	Salary	Commissioners	Commissioners	2,589.23	1170.11305.000.0005	Salary	Salary
Riddle, Terry L	Pay 01	Salary	Salary	Highway	Highway	1,626.12	1176.11752.000.0529	Salary	Salary
Garrard, Earlene L	Pay 01	Salary	Salary	Commissioners	Commissioners	1,865.42	1224.11503.000.0008	Salary	Salary
Teal, Anthony S	Pay 01	Salary	Salary	Commissioners	Commissioners	89.68	1170.11021.000.0005	Salary	Salary
Teal, Anthony S	Pay 01	Salary	Salary	Commissioners	Commissioners	2,510.77	1170.11936.000.0005	Salary	Salary
Endicott, LIndsey L	Pay 01	Salary	Salary	HD	HD	1,096.15	1206.11218.000.0610	Salary	Salary
Riehle, Brian A	Pay 01	Salary	Salary	Commissioners	Commissioners	2,438.46	1170.11815.000.0005	Salary	Salary
Jones, Ashley N	Pay 01	Salary	Salary	Commissioners	Commissioners	1,299.42	1000.11460.000.0660	Salary	Salary
Melvin, Kathryn J	Pay 01	Salary	Salary	Statewide 911	Statewide 911	188.28	4900.11021.000.0303	Salary	Salary
Melvin, Kathryn J	Pay 01	Salary	Salary	Statewide 911	Statewide 911	3,126.04	4900.11613.000.0303	Salary	Salary
Dulin, Kristopher M	Pay 01	Salary	Salary	Highway	Highway	590.77	1173.11090.000.0529	Salary	Salary
Dulin, Kristopher M	Pay 01	Salary	Salary	Highway	Highway	984.61	1176.11452.000.0529	Salary	Salary
Walke, Traci C	Pay 01	Salary	Salary	Commissioners	Commissioners	1,440.54	1000.11902.000.0002	Salary	Salary
Klein, Thomas A	Pay 01	Salary	Salary	Commissioners	Commissioners	3,726.92	1000.11120.000.0068	Salary	Salary
Pearson, Layton A	Pay 01	Salary	Salary	Commissioners	Commissioners	1,087.31	1000.11412.000.0660	Salary	Salary
Weimer, Inez J	Pay 01	Salary	Salary	Commissioners	Commissioners	1,567.31	1000.11496.000.0380	Salary	Salary
Smith, Constance S	Pay 01	Salary	Salary	Commissioners	Commissioners	1,293.58	1000.11930.000.0380	Salary	Salary
Cutts, Eric A	Pay 01	Salary	Salary	Commissioners	Commissioners	2,152.50	9177.11027.000.0235	Salary	Salary
McNulty, Alayna R	Pay 01	Salary	Salary	Statewide 911	Statewide 911	125.52	4900.11021.000.0303	Salary	Salary

Distribution Report - Employee Name/Budget Account Code  
Check Date: 10/21/2022 Normal

Montgomery Count

Employee Name	Pay Record	Current Pay Group	History Pay Group	Current Benefit Group	History Benefit Group	Amount	Budget Account Code	Current Pay Type	History Pay Type
McNulty, Alayna R	Pay 01	Salary	Salary	Statewide 911	Statewide 911	3,130.66	4900.11813.000.0303	Salary	Salary
Hechinger, Robert J	Pay 01	Salary	Salary	Commissioners	Commissioners	275.03	1170.11021.000.0005	Salary	Salary
Hechinger, Robert J	Pay 01	Salary	Salary	Commissioners	Commissioners	2,161.54	1170.11270.000.0005	Salary	Salary
Kenner, Brandon L	Pay 01	Salary	Salary	Commissioners	Commissioners	1,346.15	1000.11352.000.0380	Salary	Salary
Fulwider, James D	Pay 01	Salary	Salary	Commissioners	Commissioners	823.08	1000.11268.000.0068	Salary	Salary
Redmon, Ethan M	Pay 01	Salary	Salary	Commissioners	Commissioners	126.09	1170.11021.000.0005	Salary	Salary
Redmon, Ethan M	Pay 01	Salary	Salary	Commissioners	Commissioners	2,161.54	1170.11355.000.0005	Salary	Salary
Swank, Nisha C	Pay 01	Salary	Salary	Commissioners	Commissioners	1,663.46	1000.11238.000.0380	Salary	Salary
Bailey, C T	Pay 01	Salary	Salary	Commissioners	Commissioners	1,567.31	1000.11039.000.0379	Salary	Salary
Cornett, Chandler D	Pay 01	Salary	Salary	Commissioners	Commissioners	516.86	1000.11021.000.0380	Salary	Salary
Cornett, Chandler D	Pay 01	Salary	Salary	Commissioners	Commissioners	1,346.15	1000.11487.000.0380	Salary	Salary
Pruett, Dustin L	Pay 01	Salary	Salary	Statewide 911	Statewide 911	1,576.93	4900.11043.000.0303	Salary	Salary
Howell, Bradley J	Pay 01	Salary	Salary	Commissioners	Commissioners	157.64	1170.11021.000.0005	Salary	Salary
Howell, Bradley J	Pay 01	Salary	Salary	Commissioners	Commissioners	1,961.54	1170.11235.000.0005	Salary	Salary
Fletcher, Nathaniel G	Pay 01	Salary	Salary	Commissioners	Commissioners	1,403.85	1000.11298.000.0380	Salary	Salary
Lough, Jacob N	Pay 01	Salary	Salary	Highway	Highway	2,664.65	1176.11052.000.0529	Salary	Salary
Northcutt, Adrienne R	Pay 01	Salary	Salary	HD	HD	2,038.46	1159.11516.000.0610	Salary	Salary
Gilliland, Patrick T	Pay 01	Salary	Salary	Commissioners	Commissioners	2,100.85	1000.11225.000.0235	Salary	Salary
Waling, Ashlee N	Pay 01	Salary	Salary	Commissioners	Commissioners	2,152.50	2100.11025.000.0235	Salary	Salary

Distribution Report - Employee Name/Budget Account Code  
Check Date: 10/21/2022 Normal

Montgomery Count

Employee Name	Pay Record	Current Pay Group	History Pay Group	Current Benefit Group	History Benefit Group	Amount	Budget Account Code	Current Pay Type	History Pay Type
Traughber, Kathy A	Pay 01	Part Time	Part Time	Commissioners	Commissioners	418.00	1189.11300.000.0004	Hourly	Hourly
Price, Ashtyn M	Pay 01	Salary	Salary	Commissioners	Commissioners	120.20	1000.11021.000.0380	Salary	Salary
Price, Ashtyn M	Pay 01	Salary	Salary	Commissioners	Commissioners	1,346.15	1000.11224.000.0380	Salary	Salary
Boyer III, William H	Pay 01	Salary	Salary	Commissioners	Commissioners	1,403.85	1000.11489.000.0380	Salary	Salary
Allen, Michael J	Pay 01	Salary	Salary	Highway	Highway	2,272.88	1176.11085.000.0529	Salary	Salary
King, Travis M	Pay 01	Salary	Salary	Commissioners	Commissioners	2,877.88	1170.11274.000.0005	Salary	Salary
Bowling, Michelle V	Pay 01	Salary	Salary	Commissioners	Commissioners	665.28	1170.11021.000.0005	Salary	Salary
Bowling, Michelle V	Pay 01	Salary	Salary	Commissioners	Commissioners	1,386.04	1170.11405.000.0005	Salary	Salary
Heggemeier, Loren W	Pay 01	Salary	Salary	Highway	Highway	1,445.74	1173.11090.000.0529	Salary	Salary
Heggemeier, Loren W	Pay 01	Salary	Salary	Highway	Highway	206.53	1176.11073.000.0529	Salary	Salary
Feltner, Barbara M	Pay 01	Salary	Salary	Commissioners	Commissioners	1,517.54	1000.11409.000.0235	Salary	Salary
Lesko, Kara D	Pay 01	Salary	Salary	Commissioners	Commissioners	1,228.46	1000.11400.000.0201	Salary	Salary
Sandusky, Kimberly H	Pay 01	Salary	Salary	Commissioners	Commissioners	1,743.12	1000.11401.000.0001	Salary	Salary
Clouser, Cade M	Pay 01	Salary	Salary	Statewide 911	Statewide 911	532.26	4900.11021.000.0303	Salary	Salary
Clouser, Cade M	Pay 01	Salary	Salary	Statewide 911	Statewide 911	1,576.93	4900.11513.000.0303	Salary	Salary
Curtis, Shelby J	Pay 01	Salary	Salary	Commissioners	Commissioners	2,036.54	1170.11383.000.0005	Salary	Salary
Rusk, Leah R	Pay 01	Salary	Salary	Commissioners	Commissioners	1,346.15	1000.11838.000.0380	Salary	Salary
Hedrick, Nicholas R	Pay 01	Salary	Salary	Commissioners	Commissioners	1,157.31	1000.11209.000.0271	Salary	Salary
Oldham, Racheal A	Pay 01	Salary	Salary	Commissioners	Commissioners	105.96	2100.11023.000.0235	Salary	Salary



Distribution Report - Employee Name/Budget Account Code  
Check Date: 10/21/2022 Normal

Montgomery Count

Employee Name	Pay Record	Current Pay Group	History Pay Group	Current Benefit Group	History Benefit Group	Amount	Budget Account Code	Current Pay Type	History Pay Type
Oldham, Racheal A	Pay 01	Salary	Salary	Commissioners	Commissioners	2,648.85	9106.11028.000.0235	Salary	Salary
Webb, Julie A	Pay 01	Salary	Salary	HD	HD	1,388.59	1159.11660.000.0610	Salary	Salary
Southard, Rachel A	Pay 01	Salary	Salary	Commissioners	Commissioners	1,295.15	1000.11211.000.0001	Salary	Salary
Hunt, David T	Pay 01	Salary	Salary	Commissioners	Commissioners	192.31	1000.11261.000.0061	Salary	Salary
Cope, Vicki R	Pay 01	Salary	Salary	Statewide 911	Statewide 911	277.78	4900.11021.000.0303	Salary	Salary
Cope, Vicki R	Pay 01	Salary	Salary	Statewide 911	Statewide 911	3,264.24	4900.11307.000.0303	Salary	Salary
McAnulty, Linda M	Pay 01	Salary	Salary	Commissioners	Commissioners	1,318.35	1000.11321.000.0201	Salary	Salary
Brady, Scott W	Pay 01	Salary	Salary	Highway	Highway	1,951.60	1173.11090.000.0529	Salary	Salary
Brady, Scott W	Pay 01	Salary	Salary	Highway	Highway	172.59	1176.11257.000.0529	Salary	Salary
Geigle, Andria L	Pay 01	Salary	Salary	Commissioners	Commissioners	3,378.27	1000.11228.000.0235	Salary	Salary
Geigle, Andria L	Pay 01	Salary	Salary	Commissioners	Commissioners	337.85	2100.11021.000.0235	Salary	Salary
Deck, Samantha K	Pay 01	Salary	Salary	Commissioners	Commissioners	1,204.38	1000.11400.000.0202	Salary	Salary
Proctor, Kyle A	Pay 01	Salary	Salary	Commissioners	Commissioners	1,259.54	1170.11945.000.0005	Salary	Salary
Lowe, Nema G	Pay 01	Salary	Salary	Commissioners	Commissioners	1,750.00	1000.11370.000.0380	Salary	Salary
Black, Rachel R	Pay 01	Salary	Salary	Commissioners	Commissioners	1,267.15	1000.11321.000.0202	Salary	Salary
Rowe, Zoey J	Pay 01	Part Time	Part Time	Commissioners	Commissioners	200.08	1000.11507.000.0007	Salary	Salary
Blanton, Ronald L	Pay 01	Salary	Salary	Highway	Highway	2,272.88	1176.11859.000.0529	Salary	Salary
Frey, John E	Pay 01	Salary	Salary	Commissioners	Commissioners	823.08	1000.11368.000.0068	Salary	Salary
Thomas, Cole R	Pay 01	Salary	Salary	Commissioners	Commissioners	1,826.92	1000.11380.000.0380	Salary	Salary

Distribution Report - Employee Name/Budget Account Code  
Check Date: 10/21/2022 Normal

Montgomery County

Employee Name	Pay Record	Current Pay Group	History Pay Group	Current Benefit Group	History Benefit Group	Amount	Budget Account Code	Current Pay Type	History Pay Type
Steelsmith, Seth A	Pay 01	Salary	Salary	Highway	Highway	1,021.69	1173.11090.000.0529	Salary	Salary
Steelsmith, Seth A	Pay 01	Salary	Salary	Highway	Highway	306.50	1176.11021.000.0529	Salary	Salary
Steelsmith, Seth A	Pay 01	Salary	Salary	Highway	Highway	1,021.69	1176.11072.000.0529	Salary	Salary
Kinnett, Richard L	Pay 01	Salary	Salary	Commissioners	Commissioners	1,497.19	1000.11109.000.0009	Salary	Salary
Bentley, Sherri L	Pay 01	Salary	Salary	Commissioners	Commissioners	2,165.54	1000.11100.000.0008	Salary	Salary
Hughes, Jeremy A	Pay 01	Salary	Salary	Commissioners	Commissioners	2,877.88	1170.11505.000.0005	Salary	Salary
Wilson, Loudella E	Pay 01	Salary	Salary	Commissioners	Commissioners	1,757.85	1000.11418.000.0380	Salary	Salary
Hampton, Dave W	Pay 01	Salary	Salary	Commissioners	Commissioners	1,332.23	1000.11132.000.0312	Salary	Salary
Emmert, Vicki A	Pay 01	Part Time	Part Time	Commissioners	Commissioners	236.25	1000.11168.000.0006	Hourly	Hourly
Ledbetter, Sherri A	Pay 01	Salary	Salary	Commissioners	Commissioners	1,680.92	1000.11260.000.0660	Salary	Salary
Mitchell, Braden D	Pay 01	Salary	Salary	Commissioners	Commissioners	646.74	1170.11021.000.0005	Salary	Salary
Mitchell, Braden D	Pay 01	Salary	Salary	Commissioners	Commissioners	2,011.54	1170.11301.000.0005	Salary	Salary
Kinnett, Patricia R	Pay 01	Part Time	Part Time	Commissioners	Commissioners	240.00	1000.11201.000.0001	Hourly	Hourly
Parker, Conner D	Pay 01	Salary	Salary	Commissioners	Commissioners	1,346.15	1000.11491.000.0380	Salary	Salary
Forman, Darren D	Pay 01	Salary	Salary	Commissioners	Commissioners	764.38	1000.11100.000.0007	Salary	Salary
Ranard, Brennan D	Pay 01	Salary	Salary	Highway	Highway	767.74	1173.11090.000.0529	Salary	Salary
Ranard, Brennan D	Pay 01	Salary	Salary	Highway	Highway	938.34	1176.11077.000.0529	Salary	Salary
Hedge, Jeffery A	Pay 01	Salary	Salary	Highway	Highway	1,043.59	1173.11090.000.0529	Salary	Salary
Hedge, Jeffery A	Pay 01	Salary	Salary	Highway	Highway	1,153.45	1176.11402.000.0529	Salary	Salary

Distribution Report - Employee Name/Budget Account Code  
Check Date: 10/21/2022 Normal

Montgomery Count

Employee Name	Pay Record	Current Pay Group	History Pay Group	Current Benefit Group	History Benefit Group	Amount	Budget Account Code	Current Pay Type	History Pay Type
Mills, Don G	Pay 01	Salary	Salary	Commissioners	Commissioners	192.31	1000.11261.000.006 1	Salary	Salary
Byers, Stacey L	Pay 01	Salary	Salary	Commissioners	Commissioners	1,383.15	1000.11209.000.000 9	Salary	Salary
Cummins, Thomas E	Pay 01	Salary	Salary	Commissioners	Commissioners	2,125.31	1000.11006.000.000 6	Salary	Salary
Froedge, Jill A	Pay 01	Salary	Salary	Commissioners	Commissioners	1,774.31	1000.11321.000.023 2	Salary	Salary
Gable, Faith T	Pay 01	Salary	Salary	Commissioners	Commissioners	2,122.31	1000.11523.000.023 5	Salary	Salary
Gable, Faith T	Pay 01	Salary	Salary	Commissioners	Commissioners	212.25	2100.11021.000.023 5	Salary	Salary
Church, Erica E	Pay 01	Salary	Salary	Commissioners	Commissioners	1,137.69	1000.11502.000.020 2	Salary	Salary
Walters, Jeffrey L	Pay 01	Part Time	Part Time	Commissioners	Commissioners	255.00	4950.11055.000.000 5	Hourly	Hourly
Lough, Cody A	Pay 01	Salary	Salary	Highway	Highway	406.53	1173.11090.000.052 9	Salary	Salary
Lough, Cody A	Pay 01	Salary	Salary	Highway	Highway	243.91	1176.11021.000.052 9	Salary	Salary
Lough, Cody A	Pay 01	Salary	Salary	Highway	Highway	1,219.59	1176.11080.000.052 9	Salary	Salary
Warren, Cheyenne M	Pay 01	Salary	Salary	Commissioners	Commissioners	1,617.31	1000.11497.000.038 0	Salary	Salary
Harshbarger, Jennifer S	Pay 01	Salary	Salary	Commissioners	Commissioners	1,306.12	1000.11721.000.027 1	Salary	Salary
Boller, Cameron L	Pay 01	Salary	Salary	Commissioners	Commissioners	1,403.85	1000.11040.000.037 9	Salary	Salary
Swick, Cody J	Pay 01	Salary	Salary	Commissioners	Commissioners	1,548.08	1000.11382.000.038 0	Salary	Salary
Dodds, Regina M	Pay 01	Salary	Salary	Commissioners	Commissioners	36.82	1000.11021.000.038 0	Salary	Salary
Dodds, Regina M	Pay 01	Salary	Salary	Commissioners	Commissioners	1,375.00	1000.11486.000.038 0	Salary	Salary
Thomas, Chase O	Pay 01	Salary	Salary	Commissioners	Commissioners	1,346.15	1000.11500.000.038 0	Salary	Salary
Laffoon, Heather R	Pay 01	Salary	Salary	Commissioners	Commissioners	1,838.35	1000.11100.000.000 3	Salary	Salary

Distribution Report - Employee Name/Budget Account Code  
Check Date: 10/21/2022 Normal

Montgomery Count

Employee Name	Pay Record	Current Pay Group	History Pay Group	Current Benefit Group	History Benefit Group	Amount	Budget Account Code	Current Pay Type	History Pay Type
Barth, Katie M	Pay 01	Salary	Salary	Follow the Fund	Follow the Fund	1,326.92	8300.11065.000.0610	Salary	Salary
McCoy, Bradley J	Pay 01	Salary	Salary	Highway	Highway	813.06	1173.11090.000.0529	Salary	Salary
McCoy, Bradley J	Pay 01	Salary	Salary	Highway	Highway	813.06	1176.11319.000.0529	Salary	Salary
Kirk, Gabriel J	Pay 01	Salary	Salary	Commissioners	Commissioners	1,648.69	2100.11525.000.0235	Salary	Salary
Stonebraker, Casey T	Pay 01	Salary	Salary	Commissioners	Commissioners	1,490.38	1000.11703.000.0380	Salary	Salary
Sweeney, Megan R	Pay 01	Salary	Salary	Commissioners	Commissioners	1,220.08	1000.11209.000.0750	Salary	Salary
Yohler, Courtne E	Pay 01	Salary	Salary	Commissioners	Commissioners	1,137.69	1000.11502.000.0201	Salary	Salary
Fullenwider, Benjamin D	Pay 01	Salary	Salary	Commissioners	Commissioners	265.62	1170.11021.000.0005	Salary	Salary
Fullenwider, Benjamin D	Pay 01	Salary	Salary	Commissioners	Commissioners	2,286.54	1170.11905.000.0005	Salary	Salary
Ellis, Dawn M	Pay 01	Salary	Salary	Commissioners	Commissioners	1,269.23	1170.11209.000.0005	Salary	Salary
Teague, Diamond M	Pay 01	Salary	Salary	HD	HD	1,500.00	1159.11309.000.0610	Salary	Salary
Smith, Mark	Pay 01	Salary	Salary	Commissioners	Commissioners	192.31	1000.11261.000.0061	Salary	Salary
Burget, Jessica L	Pay 01	Salary	Salary	Commissioners	Commissioners	1,541.77	1000.11230.000.9655	Salary	Salary
McCoy, Carson	Pay 01	Salary	Salary	Highway	Highway	196.92	1173.11090.000.0529	Salary	Salary
McCoy, Carson	Pay 01	Salary	Salary	Highway	Highway	1,378.46	1176.11074.000.0529	Salary	Salary
Jones, Deanna K	Pay 01	Salary	Salary	Commissioners	Commissioners	813.24	1000.11809.000.9655	Salary	Salary
Adams, Michael S	Pay 01	Salary	Salary	Highway	Highway	1,004.31	1173.11090.000.0529	Salary	Salary
Adams, Michael S	Pay 01	Salary	Salary	Highway	Highway	14.77	1176.11021.000.0529	Salary	Salary
Adams, Michael S	Pay 01	Salary	Salary	Highway	Highway	571.07	1176.11429.000.0529	Salary	Salary

Distribution Report - Employee Name/Budget Account Code  
Check Date: 10/21/2022 Normal

Montgomery Count

Employee Name	Pay Record	Current Pay Group	History Pay Group	Current Benefit Group	History Benefit Group	Amount	Budget Account Code	Current Pay Type	History Pay Type
Beavers, Edward J	Pay 01	Salary	Salary	Highway	Highway	1,912.15	1176.11375.000.0529	Salary	Salary
Caldwell, Melissa A	Pay 01	Salary	Salary	Commissioners	Commissioners	1,754.12	1000.11209.000.0312	Salary	Salary
Weller, Mary J	Pay 01	Part Time	Part Time	Follow the Fund	Follow the Fund	637.50	1189.11168.000.0004	Hourly	Hourly
Kelly, Rebekah L	Pay 01	Salary	Salary	Commissioners	Commissioners	300.50	1000.11021.000.0380	Salary	Salary
Kelly, Rebekah L	Pay 01	Salary	Salary	Commissioners	Commissioners	1,346.15	1000.11501.000.0380	Salary	Salary
Koury, Mycah A	Pay 01	Salary	Salary	CCC 1222	CCC 1222	69.04	1222.11021.000.0303	Salary	Salary
Koury, Mycah A	Pay 01	Salary	Salary	CCC 1222	CCC 1222	3,279.75	1222.11307.000.0303	Salary	Salary
Moore, Jacob A	Pay 01	Salary	Salary	Commissioners	Commissioners	2,564.54	1000.11160.000.0009	Salary	Salary
Burkett, Stephanie T	Pay 01	Salary	Salary	Commissioners	Commissioners	37.26	1170.11021.000.0005	Salary	Salary
Burkett, Stephanie T	Pay 01	Salary	Salary	Commissioners	Commissioners	2,086.54	1170.11255.000.0005	Salary	Salary
Northcutt, Isaac M	Pay 01	Salary	Salary	Highway	Highway	400.13	1173.11090.000.0529	Salary	Salary
Northcutt, Isaac M	Pay 01	Salary	Salary	Highway	Highway	1,200.37	1176.11070.000.0529	Salary	Salary
Henry, Sherri K	Pay 01	Salary	Salary	CCC 1222	CCC 1222	2,576.92	1222.11102.000.0303	Salary	Salary
Payne, Brenda S	Pay 01	Salary	Salary	Commissioners	Commissioners	93.94	1000.11029.000.0201	Salary	Salary
Payne, Brenda S	Pay 01	Salary	Salary	Commissioners	Commissioners	2,348.58	1000.11244.000.0235	Salary	Salary
Payne, Brenda S	Pay 01	Salary	Salary	Commissioners	Commissioners	234.85	2100.11021.000.0235	Salary	Salary
Payne, Brenda S	Pay 01	Salary	Salary	Commissioners	Commissioners	281.82	4905.11021.000.0235	Salary	Salary
Dale, Connie K	Pay 01	Salary	Salary	Commissioners	Commissioners	2,225.85	1170.11705.000.0005	Salary	Salary
Sweet, Mark A	Pay 01	Salary	Salary	Highway	Highway	1,548.97	1173.11090.000.0529	Salary	Salary

Distribution Report - Employee Name/Budget Account Code  
Check Date: 10/21/2022 Normal

Montgomery County

Employee Name	Pay Record	Current Pay Group	History Pay Group	Current Benefit Group	History Benefit Group	Amount	Budget Account Code	Current Pay Type	History Pay Type
Sweet, Mark A	Pay 01	Salary	Salary	Highway	Highway	103.26	1176.11012.000.052 9	Salary	Salary
Spolarich, Ashley K	Pay 01	Salary	Salary	Commissioners	Commissioners	3,461.54	1000.11521.000.027 1	Salary	Salary
Parker, Samantha R	Pay 01	Salary	Salary	Commissioners	Commissioners	1,157.31	1000.11809.000.000 9	Salary	Salary
Parker, Nicole L	Pay 01	Salary	Salary	CCC 1222	CCC 1222	2,481.15	1222.11233.000.030 3	Salary	Salary
Hodges, Amie J	Pay 01	Salary	Salary	Commissioners	Commissioners	1,683.69	1000.11400.000.023 2	Salary	Salary
Olin, Matthew J	Pay 01	Salary	Salary	Highway	Highway	1,389.21	1173.11090.000.052 9	Salary	Salary
Olin, Matthew J	Pay 01	Salary	Salary	Highway	Highway	833.52	1176.11506.000.052 9	Salary	Salary
Young, Brock A	Pay 01	Salary	Salary	Commissioners	Commissioners	2,056.35	1000.11026.000.023 5	Salary	Salary
Miller, Gregory H	Pay 01	Salary	Salary	Commissioners	Commissioners	1,831.20	1000.11290.000.000 9	Salary	Salary
Guard, Forest D	Pay 01	Salary	Salary	Commissioners	Commissioners	823.08	1000.11068.000.006 8	Salary	Salary
Swazay, Angela D	Pay 01	Salary	Salary	Commissioners	Commissioners	1,813.54	1000.11119.000.066 0	Salary	Salary
Todd, Richard R	Pay 01	Salary	Salary	Commissioners	Commissioners	2,510.77	1170.11215.000.000 5	Salary	Salary
Boyer IV, William H	Pay 01	Salary	Salary	Commissioners	Commissioners	1,490.38	1000.11498.000.038 0	Salary	Salary
Walls, Tanner L	Pay 01	Salary	Salary	Commissioners	Commissioners	1,346.15	1000.11580.000.038 0	Salary	Salary
Yerkes-Mason, Deborah L	Pay 01	Salary	Salary	Commissioners	Commissioners	1,076.56	1224.11208.000.000 8	Salary	Salary
Stevens, Hunter L	Pay 01	Salary	Salary	Commissioners	Commissioners	1,346.15	1000.11630.000.038 0	Salary	Salary
Newlin, Timothy D	Pay 01	Salary	Salary	Commissioners	Commissioners	1,375.00	1000.11302.000.038 0	Salary	Salary
Portwood, Cheryl F	Pay 01	Salary	Salary	Commissioners	Commissioners	1,196.54	1000.11503.000.000 3	Salary	Salary
Lough, Kristin N	Pay 01	Salary	Salary	Commissioners	Commissioners	1,384.62	1000.11702.000.000 2	Salary	Salary

Distribution Report - Employee Name/Budget Account Code  
Check Date: 10/21/2022 Normal

Montgomery Count

Employee Name	Pay Record	Current Pay Group	History Pay Group	Current Benefit Group	History Benefit Group	Amount	Budget Account Code	Current Pay Type	History Pay Type
Griffith, Jennifer A	Pay 01	Salary	Salary	Commissioners	Commissioners	2,211.54	1170.11275.000.0005	Salary	Salary
Bohlender, Jacob R	Pay 01	Salary	Salary	Commissioners	Commissioners	192.31	1000.11261.000.0061	Salary	Salary
Denbo, Leah L	Pay 01	Salary	Salary	Commissioners	Commissioners	1,779.23	1000.11300.000.0001	Salary	Salary
Orr, Donald S	Pay 01	Salary	Salary	HD	HD	1,523.77	1159.11216.000.0610	Salary	Salary
Melvin, Brent D	Pay 01	Salary	Salary	Highway	Highway	1,652.23	1173.11090.000.0529	Salary	Salary
Rice, Anthony J	Pay 01	Salary	Salary	Commissioners	Commissioners	2,386.54	1170.11850.000.0005	Salary	Salary
Victory-Kosinski, Kaytlynn R	Pay 01	Salary	Salary	Statewide 911	Statewide 911	66.10	4900.11021.000.0303	Salary	Salary
Victory-Kosinski, Kaytlynn R	Pay 01	Salary	Salary	Statewide 911	Statewide 911	3,359.85	4900.11212.000.0303	Salary	Salary
York, Jennifer B	Pay 01	Salary	Salary	Commissioners	Commissioners	2,801.35	9144.11522.000.0235	Salary	Salary
Dossett, Laura R	Pay 01	Salary	Salary	Commissioners	Commissioners	1,813.54	1000.11258.000.0068	Salary	Salary
Bushong, Cynthia D	Pay 01	Part Time	Part Time	Commissioners	Commissioners	382.19	1000.11200.000.0007	Salary	Salary
Bushong, Cynthia D	Pay 02	Salary	Salary	HD	HD	1,384.62	8120.11105.000.0610	Salary	Salary
Martin, Donald D	Pay 01	Salary	Salary	Highway	Highway	2,009.58	1173.11090.000.0529	Salary	Salary
Stonebraker, Ashley M	Pay 01	Salary	Salary	Commissioners	Commissioners	1,244.88	1000.11600.000.0001	Salary	Salary
Davis, Ashley-Joy H	Pay 01	Part Time	Part Time	Follow the Fund	Follow the Fund	248.50	8300.11065.000.0610	Hourly	Hourly
Ellis, Joseph M	Pay 01	Salary	Salary	Commissioners	Commissioners	689.50	1000.11112.000.0012	Salary	Salary
Michael, Dakota T	Pay 01	Salary	Salary	Highway	Highway	2,091.00	1176.11018.000.0529	Salary	Salary
Little, Lauren R	Pay 01	Salary	Salary	Commissioners	Commissioners	1,375.00	1000.11495.000.0380	Salary	Salary
Meadows, Mary J	Pay 01	Salary	Salary	Commissioners	Commissioners	1,757.85	1224.11308.000.0008	Salary	Salary

Distribution Report - Employee Name/Budget Account Code  
Check Date: 10/21/2022 Normal

Montgomery Count

Employee Name	Pay Record	Current Pay Group	History Pay Group	Current Benefit Group	History Benefit Group	Amount	Budget Account Code	Current Pay Type	History Pay Type
Cevela, Jamie L	Pay 01	Salary	Salary	Follow the Fund	Follow the Fund	1,375.00	9131.11241.000.0005	Salary	Salary
Custer, Lena K	Pay 01	Salary	Salary	Commissioners	Commissioners	1,768.77	1000.11304.000.0001	Salary	Salary
Roe, Becky S	Pay 01	Salary	Salary	Commissioners	Commissioners	1,040.81	1000.11393.000.0380	Salary	Salary
Herron, Amber L	Pay 01	Salary	Salary	Highway	Highway	2,185.42	1176.11159.000.0529	Salary	Salary
Kirby, Elizabeth L	Pay 01	Salary	Salary	CCC 1222	CCC 1222	161.04	1222.11021.000.0303	Salary	Salary
Kirby, Elizabeth L	Pay 01	Salary	Salary	CCC 1222	CCC 1222	2,089.69	1222.11404.000.0303	Salary	Salary
Crull, Kevin M	Pay 01	Salary	Salary	Commissioners	Commissioners	870.39	1170.11021.000.0005	Salary	Salary
Crull, Kevin M	Pay 01	Salary	Salary	Commissioners	Commissioners	2,488.46	1170.11934.000.0005	Salary	Salary
Donaldson, Steven B	Pay 01	Salary	Salary	Commissioners	Commissioners	4,613.96	1000.11421.000.0271	Salary	Salary
Browning, Sinahi U	Pay 01	Part Time	Part Time	Statewide 911	Statewide 911	2,427.38	4900.11413.000.0303	Hourly	Hourly
Phillips, Monica D	Pay 01	Salary	Salary	Commissioners	Commissioners	42.12	1000.11021.000.0379	Salary	Salary
Phillips, Monica D	Pay 01	Salary	Salary	Commissioners	Commissioners	1,403.85	1000.11439.000.0379	Salary	Salary
Villalpando, Lindsey A	Pay 01	Salary	Salary	Commissioners	Commissioners	2,390.85	1000.11273.000.0235	Salary	Salary
Villalpando, Lindsey A	Pay 01	Salary	Salary	Commissioners	Commissioners	478.20	2100.11021.000.0235	Salary	Salary
Kadinger, Matthew D	Pay 01	Salary	Salary	Commissioners	Commissioners	1,375.00	1000.11293.000.0380	Salary	Salary
Punke, Deric L	Pay 01	Salary	Salary	Commissioners	Commissioners	88.68	1170.11021.000.0005	Salary	Salary
Punke, Deric L	Pay 01	Salary	Salary	Commissioners	Commissioners	1,986.54	1170.11024.000.0005	Salary	Salary
Miller, Ethan A	Pay 01	Salary	Salary	Commissioners	Commissioners	110.48	1000.11021.000.0380	Salary	Salary
Miller, Ethan A	Pay 01	Salary	Salary	Commissioners	Commissioners	1,375.00	1000.11280.000.0380	Salary	Salary



Distribution Report - Employee Name/Budget Account Code  
Check Date: 10/21/2022 Normal

Montgomery Count

Employee Name	Pay Record	Current Pay Group	History Pay Group	Current Benefit Group	History Benefit Group	Amount	Budget Account Code	Current Pay Type	History Pay Type
Kiger, Layton T	Pay 01	Salary	Salary	Commissioners	Commissioners	1,375.00	1000.11488.000.0380	Salary	Salary
Lowe, Albert L	Pay 01	Salary	Salary	Highway	Highway	2,272.88	1173.11090.000.0529	Salary	Salary
Barth, Daniel S	Pay 01	Salary	Salary	Commissioners	Commissioners	28.65	1000.11021.000.0379	Salary	Salary
Barth, Daniel S	Pay 01	Salary	Salary	Commissioners	Commissioners	1,432.69	1000.11239.000.0379	Salary	Salary
Cochran, Hannah R	Pay 01	Salary	Salary	Commissioners	Commissioners	292.56	2100.11021.000.0235	Salary	Salary
Cochran, Hannah R	Pay 01	Salary	Salary	Commissioners	Commissioners	2,250.54	9178.11213.000.0235	Salary	Salary
Bickel, Mark M	Pay 01	Salary	Salary	Commissioners	Commissioners	3,185.96	1000.11229.000.0235	Salary	Salary
Cox, Nancy L	Pay 01	Salary	Salary	Commissioners	Commissioners	1,562.62	1000.11300.000.0003	Salary	Salary
Eads, Hunter C	Pay 01	Salary	Salary	Commissioners	Commissioners	1,986.54	1170.11200.000.0005	Salary	Salary
Davis, Michael D	Pay 01	Salary	Salary	Commissioners	Commissioners	1,961.54	1000.11105.000.0753	Salary	Salary
Minor, Jeremy K	Pay 01	Salary	Salary	Commissioners	Commissioners	490.44	1170.11021.000.0005	Salary	Salary
Minor, Jeremy K	Pay 01	Salary	Salary	Commissioners	Commissioners	2,211.54	1170.11507.000.0005	Salary	Salary
Mellish, Thomas J	Pay 01	Salary	Salary	Commissioners	Commissioners	192.31	1000.11261.000.0061	Salary	Salary
Stephens, William C	Pay 01	Salary	Salary	Highway	Highway	492.96	1173.11090.000.0529	Salary	Salary
Stephens, William C	Pay 01	Salary	Salary	Highway	Highway	1,221.69	1176.11019.000.0529	Salary	Salary
Brown, Brittany A	Pay 01	Salary	Salary	Commissioners	Commissioners	1,490.38	1000.11485.000.0380	Salary	Salary
Surber, Aaron S	Pay 01	Salary	Salary	Highway	Highway	1,575.38	1173.11090.000.0529	Salary	Salary
Brown, Christian C	Pay 01	Salary	Salary	Commissioners	Commissioners	2,038.46	1000.11480.000.0380	Salary	Salary
Gooding, Beth A	Pay 01	Salary	Salary	Commissioners	Commissioners	1,082.85	1000.11253.000.0380	Salary	Salary

Distribution Report - Employee Name/Budget Account Code  
Check Date: 10/21/2022 Normal

Montgomery County

Employee Name	Pay Record	Current Pay Group	History Pay Group	Current Benefit Group	History Benefit Group	Amount	Budget Account Code	Current Pay Type	History Pay Type
Taylor, Michael G	Pay 01	Salary	Salary	Commissioners	Commissioners	2,510.77	1170.11937.000.0005	Salary	Salary
Carrell, Henry W	Pay 01	Salary	Salary	Commissioners	Commissioners	1,667.58	1000.11733.000.0380	Salary	Salary
Conrad, Carolyn S	Pay 01	Salary	Salary	Commissioners	Commissioners	1,593.04	1000.11502.000.0232	Salary	Salary
Greene, Paula L	Pay 01	Salary	Salary	Commissioners	Commissioners	1,403.85	1000.11493.000.0380	Salary	Salary
Miller, Farren M	Pay 01	Salary	Salary	Commissioners	Commissioners	1,991.31	9178.11524.000.0235	Salary	Salary
Burley, Jeremy J	Pay 01	Salary	Salary	Commissioners	Commissioners	710.78	1000.11160.000.0660	Salary	Salary
Burley, Jeremy J	Pay 01	Salary	Salary	Commissioners	Commissioners	96.97	4947.11168.000.0009	Salary	Salary
Taylor, Greg L	Pay 01	Salary	Salary	Commissioners	Commissioners	1,147.50	1000.11734.000.0313	Salary	Salary
Douglas, Scott K	Pay 01	Salary	Salary	HD	HD	1,153.85	1159.11162.000.0610	Salary	Salary
Needham, Michael R	Pay 01	Salary	Salary	Commissioners	Commissioners	3,861.50	1170.11175.000.0005	Salary	Salary
Doty, Chelsey D	Pay 01	Salary	Salary	Commissioners	Commissioners	1,153.85	1000.11360.000.0660	Salary	Salary
Bonwell, David M	Pay 01	Salary	Salary	Commissioners	Commissioners	2,475.92	1000.11732.000.0312	Salary	Salary
French, Aaron D	Pay 01	Salary	Salary	Commissioners	Commissioners	168.94	1170.11021.000.0005	Salary	Salary
French, Aaron D	Pay 01	Salary	Salary	Commissioners	Commissioners	2,510.77	1170.11022.000.0005	Salary	Salary
Gustafson, Kevin E	Pay 01	Salary	Salary	Highway	Highway	196.92	1173.11090.000.0529	Salary	Salary
Gustafson, Kevin E	Pay 01	Salary	Salary	Highway	Highway	1,378.46	1176.11020.000.0529	Salary	Salary
Wolf, James M	Pay 01	Salary	Salary	Commissioners	Commissioners	576.92	1000.11138.000.0308	Salary	Salary
Sutherlin, Kirsten M	Pay 01	Salary	Salary	Commissioners	Commissioners	1,295.23	1000.11209.000.0235	Salary	Salary
Halle, Cheryl D	Pay 01	Salary	Salary	Commissioners	Commissioners	1,743.15	1000.11409.000.0009	Salary	Salary

Distribution Report - Employee Name/Budget Account Code  
Check Date: 10/21/2022 Normal

Montgomery County

Employee Name	Pay Record	Current Pay Group	History Pay Group	Current Benefit Group	History Benefit Group	Amount	Budget Account Code	Current Pay Type	History Pay Type
Latzke, Kristen C	Pay 01	Salary	Salary	Commissioners	Commissioners	1,730.77	1000.11575.000.0750	Salary	Salary
Alenduff, Brandon R	Pay 01	Salary	Salary	Commissioners	Commissioners	1,432.69	1000.11236.000.0380	Salary	Salary
Herron, Rhonda L	Pay 01	Salary	Salary	Commissioners	Commissioners	1,498.77	1000.11113.000.0753	Salary	Salary
Booth, Gary D	Pay 01	Salary	Salary	Commissioners	Commissioners	192.31	1000.11261.000.0061	Salary	Salary
Powell, Daniel E	Pay 01	Salary	Salary	Highway	Highway	758.54	1173.11090.000.0529	Salary	Salary
Powell, Daniel E	Pay 01	Salary	Salary	Highway	Highway	975.27	1176.11076.000.0529	Salary	Salary
Pursell, Jennifer J	Pay 01	Salary	Salary	Commissioners	Commissioners	1,815.69	1189.11100.000.0004	Salary	Salary
Cruse, Amanda L	Pay 01	Salary	Salary	Commissioners	Commissioners	2,692.31	4923.11821.000.0271	Salary	Salary
Cornett, Alexander J	Pay 01	Salary	Salary	Highway	Highway	1,422.85	1173.11090.000.0529	Salary	Salary
Cornett, Alexander J	Pay 01	Salary	Salary	Highway	Highway	203.27	1176.11011.000.0529	Salary	Salary
Shaw, Devin J	Pay 01	Salary	Salary	Commissioners	Commissioners	1,375.00	1000.11339.000.0379	Salary	Salary
Stull, James D	Pay 01	Salary	Salary	Highway	Highway	1,763.36	1173.11090.000.0529	Salary	Salary
Stull, James D	Pay 01	Salary	Salary	Highway	Highway	117.56	1176.11071.000.0529	Salary	Salary
Davidson, Mark A	Pay 01	Salary	Salary	Commissioners	Commissioners	192.31	1000.11261.000.0061	Salary	Salary
Williamson, Lindsay J	Pay 01	Salary	Salary	Commissioners	Commissioners	1,276.04	1000.11159.000.0011	Salary	Salary
Pallante, David J	Pay 01	Salary	Salary	Commissioners	Commissioners	1,346.15	1000.11499.000.0380	Salary	Salary
Harrington, Shari L	Pay 01	Salary	Salary	Commissioners	Commissioners	2,125.31	1000.11095.000.9655	Salary	Salary
Walsh, Todd P	Pay 01	Salary	Salary	Commissioners	Commissioners	682.40	1170.11021.000.0005	Salary	Salary
Walsh, Todd P	Pay 01	Salary	Salary	Commissioners	Commissioners	2,311.54	1170.11938.000.0005	Salary	Salary

Distribution Report - Employee Name/Budget Account Code  
Check Date: 10/21/2022 Normal

Montgomery Count

Employee Name	Pay Record	Current Pay Group	History Pay Group	Current Benefit Group	History Benefit Group	Amount	Budget Account Code	Current Pay Type	History Pay Type
Haslam, Brittany R	Pay 01	Salary	Salary	CCC 1222	CCC 1222	134.48	1222.11021.000.0303	Salary	Salary
Haslam, Brittany R	Pay 01	Salary	Salary	CCC 1222	CCC 1222	3,340.41	1222.11212.000.0303	Salary	Salary
Byers, Mindy K	Pay 01	Salary	Salary	Commissioners	Commissioners	2,140.54	1000.11300.000.0002	Salary	Salary
Grayson, Peggy S	Pay 01	Salary	Salary	Commissioners	Commissioners	1,849.27	1224.11300.000.0008	Salary	Salary
Jenkins, Cole T	Pay 01	Salary	Salary	Highway	Highway	728.62	1173.11090.000.0529	Salary	Salary
Jenkins, Cole T	Pay 01	Salary	Salary	Highway	Highway	846.76	1176.11007.000.0529	Salary	Salary
Jenkins Jr, Rodney L	Pay 01	Salary	Salary	Commissioners	Commissioners	2,589.23	1170.11315.000.0005	Salary	Salary
Myers, Laren E	Pay 01	Salary	Salary	Commissioners	Commissioners	1,629.35	1170.11975.000.0005	Salary	Salary
Lazell, Lula D	Pay 01	Salary	Salary	Commissioners	Commissioners	1,294.12	1000.11243.000.0380	Salary	Salary
<b>294</b>						<b>408,276.46</b>			

# Claims: Payroll 11/4/22

Wednesday, November 9, 2022 5:15 PM

# Printout

Wednesday, November 9, 2022 5:17 PM

Distribution Report - Employee Name/Budget Account Code  
Check Date: 11/04/2022 Normal

Montgomery County

Employee Name	Current Pay Group	Current Benefit Group	History Benefit Group	Amount	Budget Account Code	Current Pay Type
Haslam, Brittany R	Salary	CCC 1222	CCC 1222	750.00	1222.11005.00000.0303	Salary
Haslam, Brittany R	Salary	CCC 1222	CCC 1222	134.48	1222.11021.00000.0303	Salary
Haslam, Brittany R	Salary	CCC 1222	CCC 1222	1,792.61	1222.11212.00000.0303	Salary
Kirby, Elizabeth L	Salary	CCC 1222	CCC 1222	750.00	1222.11005.00000.0303	Salary
Kirby, Elizabeth L	Salary	CCC 1222	CCC 1222	161.04	1222.11021.00000.0303	Salary
Kirby, Elizabeth L	Salary	CCC 1222	CCC 1222	2,089.69	1222.11404.00000.0303	Salary
Hines, Sarah A	Salary	CCC 1222	CCC 1222	1,000.00	1222.11005.00000.0303	Salary
Hines, Sarah A	Salary	CCC 1222	CCC 1222	2,341.42	1222.11303.00000.0303	Salary
Parker, Nicole L	Salary	CCC 1222	CCC 1222	750.00	1222.11005.00000.0303	Salary
Parker, Nicole L	Salary	CCC 1222	CCC 1222	2,481.15	1222.11233.00000.0303	Salary
Clouser, Brooke E	Salary	CCC 1222	CCC 1222	750.00	1222.11005.00000.0303	Salary
Clouser, Brooke E	Salary	CCC 1222	CCC 1222	2,008.00	1222.11730.00000.0303	Salary
Koury, Mycah A	Salary	CCC 1222	CCC 1222	750.00	1222.11005.00000.0303	Salary
Koury, Mycah A	Salary	CCC 1222	CCC 1222	155.34	1222.11021.00000.0303	Salary
Koury, Mycah A	Salary	CCC 1222	CCC 1222	1,840.70	1222.11307.00000.0303	Salary
Henry, Sherri K	Salary	CCC 1222	CCC 1222	2,576.92	1222.11102.00000.0303	Salary
Byers, Mindy K	Salary	Commissioners	Commissioners	2,140.54	1000.11300.00000.0002	Salary
Mills, Don G	Salary	Commissioners	Commissioners	192.31	1000.11261.00000.0061	Salary
Davidson, Mark A	Salary	Commissioners	Commissioners	192.31	1000.11261.00000.0061	Salary
Smith, Mark	Salary	Commissioners	Commissioners	192.31	1000.11261.00000.0061	Salary
Hechinger, Robert J	Salary	Commissioners	Commissioners	275.03	1170.11021.00000.0005	Salary
Hechinger, Robert J	Salary	Commissioners	Commissioners	2,161.54	1170.11270.00000.0005	Salary
Ellis, Joseph M	Salary	Commissioners	Commissioners	689.50	1000.11112.00000.0012	Salary
Brown, Brittany A	Salary	Commissioners	Commissioners	1,490.38	1000.11485.00000.0380	Salary
Bowling, Michelle V	Salary	Commissioners	Commissioners	1,386.04	1170.11405.00000.0005	Salary
Jones, Ashley N	Salary	Commissioners	Commissioners	1,299.42	1000.11460.00000.0660	Salary
Laplaunt, Nichole E	Salary	Commissioners	Commissioners	2,152.50	4905.11125.00000.0235	Salary
Rice, Anthony J	Salary	Commissioners	Commissioners	2,386.54	1170.11850.00000.0005	Salary
Northcutt, Greg A	Salary	Commissioners	Commissioners	1,602.62	1000.11983.00000.0313	Salary
Proctor, Kyle A	Salary	Commissioners	Commissioners	1,259.54	1170.11945.00000.0005	Salary
Young, Brock A	Salary	Commissioners	Commissioners	2,152.50	1000.11026.00000.0235	Salary

Distribution Report - Employee Name/Budget Account Code  
Check Date: 11/04/2022 Normal

Montgomery County

Employee Name	Current Pay Group	Current Benefit Group	History Benefit Group	Amount	Budget Account Code	Current Pay Type
Howell, Bradley J	Salary	Commissioners	Commissioners	70.06	1170.11021.00000.0005	Salary
Howell, Bradley J	Salary	Commissioners	Commissioners	1,961.54	1170.11235.00000.0005	Salary
Redmon, Ethan M	Salary	Commissioners	Commissioners	189.14	1170.11021.00000.0005	Salary
Redmon, Ethan M	Salary	Commissioners	Commissioners	2,161.54	1170.11355.00000.0005	Salary
Burley, Jeremy J	Salary	Commissioners	Commissioners	323.08	4947.11168.00000.0009	Salary
Burley, Jeremy J	Salary	Commissioners	Commissioners	2,369.23	1000.11160.00000.0660	Salary
Mellish, Thomas J	Salary	Commissioners	Commissioners	192.31	1000.11261.00000.0061	Salary
Kirk, Gabriel J	Salary	Commissioners	Commissioners	164.85	2100.11021.00000.0235	Salary
Kirk, Gabriel J	Salary	Commissioners	Commissioners	1,648.69	2100.11525.00000.0235	Salary
Carrell, Henry W	Salary	Commissioners	Commissioners	1,667.58	1000.11733.00000.0380	Salary
Hodges, Arnie J	Salary	Commissioners	Commissioners	1,683.69	1000.11400.00000.0232	Salary
Pursell, Jennifer J	Salary	Commissioners	Commissioners	1,815.69	1189.11100.00000.0004	Salary
Sandusky, Kimberly H	Salary	Commissioners	Commissioners	1,743.12	1000.11401.00000.0001	Salary
Meadows, Mary J	Salary	Commissioners	Commissioners	1,757.85	1224.11308.00000.0008	Salary
Ledbetter, Sherri A	Salary	Commissioners	Commissioners	1,680.92	1000.11260.00000.0660	Salary
Traughber, Kathy A	Part Time	Commissioners	Commissioners	748.00	1189.11300.00000.0004	Hourly
Hunt, David T	Salary	Commissioners	Commissioners	192.31	1000.11261.00000.0061	Salary
Halle, Cheryl D	Salary	Commissioners	Commissioners	1,743.15	1000.11409.00000.0009	Salary
Garrard, Earlene L	Salary	Commissioners	Commissioners	1,865.42	1224.11503.00000.0008	Salary
Caldwell, Melissa A	Salary	Commissioners	Commissioners	1,754.12	1000.11209.00000.0312	Salary
Davis, Michael D	Salary	Commissioners	Commissioners	1,961.54	1000.11105.00000.0753	Salary
Dossett, Laura R	Salary	Commissioners	Commissioners	1,813.54	1000.11258.00000.0068	Salary
Taylor, Michael G	Salary	Commissioners	Commissioners	113.80	1170.11021.00000.0005	Salary
Taylor, Michael G	Salary	Commissioners	Commissioners	2,510.77	1170.11937.00000.0005	Salary
Crull, Kevin M	Salary	Commissioners	Commissioners	320.67	1170.11021.00000.0005	Salary
Crull, Kevin M	Salary	Commissioners	Commissioners	2,488.46	1170.11934.00000.0005	Salary
Froedge, Jill A	Salary	Commissioners	Commissioners	1,774.31	1000.11321.00000.0232	Salary
Conrad, Carolyn S	Salary	Commissioners	Commissioners	1,593.04	1000.11502.00000.0232	Salary
Miller, Gregory H	Salary	Commissioners	Commissioners	3,139.01	1000.11290.00000.0009	Salary
Bickel, Mark M	Salary	Commissioners	Commissioners	254.88	2100.11021.00000.0235	Salary
Bickel, Mark M	Salary	Commissioners	Commissioners	3,185.96	1000.11229.00000.0235	Salary

Distribution Report - Employee Name/Budget Account Code  
Check Date: 11/04/2022 Normal

Montgomery Count

Employee Name	Current Pay Group	Current Benefit Group	History Benefit Group	Amount	Budget Account Code	Current Pay Type
Frey, John E	Salary	Commissioners	Commissioners	823.08	1000.11368.00000.0068	Salary
Dale, Connie K	Salary	Commissioners	Commissioners	2,225.85	1170.11705.00000.0005	Salary
Oldham, Racheal A	Salary	Commissioners	Commissioners	264.90	2100.11021.00000.0235	Salary
Oldham, Racheal A	Salary	Commissioners	Commissioners	2,648.85	9106.11028.00000.0235	Salary
Oldham, Racheal A	Salary	Commissioners	Commissioners	105.96	2100.11023.00000.0235	Salary
Douglas, Karyn D	Salary	Commissioners	Commissioners	1,933.81	1000.11100.00000.0001	Salary
Lowe, Nema G	Salary	Commissioners	Commissioners	1,750.00	1000.11370.00000.0380	Salary
Thomas, Cole R	Salary	Commissioners	Commissioners	1,826.92	1000.11380.00000.0380	Salary
Emmert, Vicki A	Part Time	Commissioners	Commissioners	226.53	1000.11168.00000.0006	Hourly
Lazell, Lula D	Salary	Commissioners	Commissioners	1,294.12	1000.11243.00000.0380	Salary
King, Travis M	Salary	Commissioners	Commissioners	2,877.88	1170.11274.00000.0005	Salary
Walsh, Todd P	Salary	Commissioners	Commissioners	2,311.54	1170.11938.00000.0005	Salary
York, Jennifer B	Salary	Commissioners	Commissioners	2,801.35	9144.11522.00000.0235	Salary
French, Aaron D	Salary	Commissioners	Commissioners	941.26	1170.11021.00000.0005	Salary
French, Aaron D	Salary	Commissioners	Commissioners	2,510.77	1170.11022.00000.0005	Salary
Smith, Constance S	Salary	Commissioners	Commissioners	1,293.58	1000.11930.00000.0380	Salary
Geigle, Andria L	Salary	Commissioners	Commissioners	337.85	2100.11021.00000.0235	Salary
Geigle, Andria L	Salary	Commissioners	Commissioners	3,378.27	1000.11228.00000.0235	Salary
Payne, Brenda S	Salary	Commissioners	Commissioners	375.76	4905.11021.00000.0235	Salary
Payne, Brenda S	Salary	Commissioners	Commissioners	2,348.58	1000.11244.00000.0235	Salary
Payne, Brenda S	Salary	Commissioners	Commissioners	234.85	2100.11021.00000.0235	Salary
Bentley, Sherri L	Salary	Commissioners	Commissioners	2,165.54	1000.11100.00000.0008	Salary
Grayson, Peggy S	Salary	Commissioners	Commissioners	1,849.27	1224.11300.00000.0008	Salary
Andel, Jennifer J	Salary	Commissioners	Commissioners	2,518.27	1000.11100.00000.0002	Salary
Feltner, Barbara M	Salary	Commissioners	Commissioners	91.05	2100.11021.00000.0235	Salary
Feltner, Barbara M	Salary	Commissioners	Commissioners	1,517.54	1000.11409.00000.0235	Salary
Ellis, Dawn M	Salary	Commissioners	Commissioners	1,269.23	1170.11209.00000.0005	Salary
Swank, Nisha C	Salary	Commissioners	Commissioners	1,663.46	1000.11238.00000.0380	Salary
Kirby, Jared R	Salary	Commissioners	Commissioners	2,211.54	1170.11935.00000.0005	Salary
Minor, Jeremy K	Salary	Commissioners	Commissioners	2,211.54	1170.11507.00000.0005	Salary
Griffith, Jennifer A	Salary	Commissioners	Commissioners	2,211.54	1170.11275.00000.0005	Salary



Distribution Report - Employee Name/Budget Account Code  
Check Date: 11/04/2022 Normal

Montgomery Count

Employee Name	Current Pay Group	Current Benefit Group	▲ History Benefit Group	Amount	Budget Account Code	Current Pay Type
Villalpando, Lindsey A	Salary	Commissioners	Commissioners	2,390.85	1000.11273.00000.0235	Salary
Villalpando, Lindsey A	Salary	Commissioners	Commissioners	239.10	2100.11021.00000.0235	Salary
Kinnett, Richard L	Salary	Commissioners	Commissioners	1,497.19	1000.11109.00000.0009	Salary
Denbo, Leah L	Salary	Commissioners	Commissioners	1,779.23	1000.11300.00000.0001	Salary
Fullenwider, Benjamin D	Salary	Commissioners	Commissioners	265.62	1170.11021.00000.0005	Salary
Fullenwider, Benjamin D	Salary	Commissioners	Commissioners	2,286.54	1170.11905.00000.0005	Salary
Byers, Stacey L	Salary	Commissioners	Commissioners	1,383.15	1000.11209.00000.0009	Salary
Pallante, David J	Salary	Commissioners	Commissioners	1,346.15	1000.11499.00000.0380	Salary
Cummins, Thomas E	Salary	Commissioners	Commissioners	2,125.31	1000.11006.00000.0006	Salary
Forman, Darren D	Salary	Commissioners	Commissioners	764.38	1000.11100.00000.0007	Salary
Harrington, Shari L	Salary	Commissioners	Commissioners	2,847.91	1000.11095.00000.9655	Salary
Cutts, Eric A	Salary	Commissioners	Commissioners	344.40	2100.11021.00000.0235	Salary
Cutts, Eric A	Salary	Commissioners	Commissioners	2,152.50	9177.11027.00000.0235	Salary
Cutts, Eric A	Salary	Commissioners	Commissioners	86.10	1000.11029.00000.0201	Salary
Myers, Laren E	Salary	Commissioners	Commissioners	1,629.35	1170.11975.00000.0005	Salary
McCarty, Matt P	Salary	Commissioners	Commissioners	3,241.96	1170.11205.00000.0005	Salary
Jenkins Jr, Rodney L	Salary	Commissioners	Commissioners	2,589.23	1170.11315.00000.0005	Salary
Watson, Jacob M	Salary	Commissioners	Commissioners	214.24	1170.11021.00000.0005	Salary
Watson, Jacob M	Salary	Commissioners	Commissioners	2,589.23	1170.11305.00000.0005	Salary
Needham, Michael R	Salary	Commissioners	Commissioners	3,861.50	1170.11175.00000.0005	Salary
Hughes, Jeremy A	Salary	Commissioners	Commissioners	51.39	1170.11021.00000.0005	Salary
Hughes, Jeremy A	Salary	Commissioners	Commissioners	2,877.88	1170.11505.00000.0005	Salary
Fulwider, James D	Salary	Commissioners	Commissioners	823.08	1000.11268.00000.0068	Salary
Miller, Ethan A	Salary	Commissioners	Commissioners	1,375.00	1000.11280.00000.0380	Salary
Swazay, Angela D	Salary	Commissioners	Commissioners	1,813.54	1000.11119.00000.0660	Salary
Cochran, Hannah R	Salary	Commissioners	Commissioners	2,250.54	9178.11213.00000.0235	Salary
Booth, Gary D	Salary	Commissioners	Commissioners	192.31	1000.11261.00000.0061	Salary
Burkett, Stephanie T	Salary	Commissioners	Commissioners	149.04	1170.11021.00000.0005	Salary
Burkett, Stephanie T	Salary	Commissioners	Commissioners	2,086.54	1170.11255.00000.0005	Salary
Yerkes-Mason, Deborah L	Salary	Commissioners	Commissioners	1,451.33	1224.11208.00000.0008	Salary
Weimer, Inez J	Salary	Commissioners	Commissioners	1,567.31	1000.11496.00000.0380	Salary

Distribution Report - Employee Name/Budget Account Code  
Check Date: 11/04/2022 Normal

Montgomery County

Employee Name	Current Pay Group	Current Benefit Group	History Benefit Group	Amount	Budget Account Code	Current Pay Type
Laffoon, Heather R	Salary	Commissioners	Commissioners	1,838.35	1000.11100.00000.0003	Salary
Bushong, Cynthia D	Part Time	Commissioners	Commissioners	382.19	1000.11200.00000.0007	Salary
Bailey, C T	Salary	Commissioners	Commissioners	1,567.31	1000.11039.00000.0379	Salary
Todd, Richard R	Salary	Commissioners	Commissioners	2,510.77	1170.11215.00000.0005	Salary
Wolf, James M	Salary	Commissioners	Commissioners	576.92	1000.11138.00000.0308	Salary
Southard, Rachel A	Salary	Commissioners	Commissioners	1,295.15	1000.11211.00000.0001	Salary
Swick, Cody J	Salary	Commissioners	Commissioners	1,548.08	1000.11382.00000.0380	Salary
Warren, Cheyenne M	Salary	Commissioners	Commissioners	1,617.31	1000.11497.00000.0380	Salary
Gooding, Beth A	Salary	Commissioners	Commissioners	1,082.85	1000.11253.00000.0380	Salary
Sutherland, Kirsten M	Salary	Commissioners	Commissioners	1,295.23	1000.11209.00000.0235	Salary
Waling, Ashlee N	Salary	Commissioners	Commissioners	2,152.50	2100.11025.00000.0235	Salary
Waling, Ashlee N	Salary	Commissioners	Commissioners	215.25	4905.11021.00000.0235	Salary
Donaldson, Steven B	Salary	Commissioners	Commissioners	4,613.96	1000.11421.00000.0271	Salary
Moore, Jacob A	Salary	Commissioners	Commissioners	2,564.54	1000.11160.00000.0009	Salary
Herron, Rhonda L	Salary	Commissioners	Commissioners	1,498.77	1000.11113.00000.0753	Salary
Hampton, Dave W	Salary	Commissioners	Commissioners	1,332.23	1000.11132.00000.0312	Salary
Williamson, Lindsay J	Salary	Commissioners	Commissioners	1,276.04	1000.11159.00000.0011	Salary
Harshbarger, Jennifer S	Salary	Commissioners	Commissioners	1,306.12	1000.11721.00000.0271	Salary
Gable, Faith T	Salary	Commissioners	Commissioners	2,122.31	1000.11523.00000.0235	Salary
Roe, Becky S	Salary	Commissioners	Commissioners	1,040.81	1000.11393.00000.0380	Salary
Alenduff, Brandon R	Salary	Commissioners	Commissioners	1,432.69	1000.11236.00000.0380	Salary
Barth, Daniel S	Salary	Commissioners	Commissioners	171.90	1000.11021.00000.0379	Salary
Barth, Daniel S	Salary	Commissioners	Commissioners	1,432.69	1000.11239.00000.0379	Salary
Stonebraker, Ashley M	Salary	Commissioners	Commissioners	1,244.88	1000.11600.00000.0001	Salary
Walters, Jeffrey L	Part Time	Commissioners	Commissioners	646.00	4950.11055.00000.0005	Hourly
Boyer IV, William H	Salary	Commissioners	Commissioners	1,490.38	1000.11498.00000.0380	Salary
Deck, Samantha K	Salary	Commissioners	Commissioners	1,204.38	1000.11400.00000.0202	Salary
McAnulty, Linda M	Salary	Commissioners	Commissioners	1,318.35	1000.11321.00000.0201	Salary
Portwood, Cheryl F	Salary	Commissioners	Commissioners	1,196.54	1000.11503.00000.0003	Salary
Bonwell, David M	Salary	Commissioners	Commissioners	2,475.92	1000.11732.00000.0312	Salary
Klein, Thomas A	Salary	Commissioners	Commissioners	3,726.92	1000.11120.00000.0068	Salary

Distribution Report - Employee Name/Budget Account Code  
Check Date: 11/04/2022 Normal

Montgomery Count

Employee Name	Current Pay Group	Current Benefit Group	History Benefit Group	Amount	Budget Account Code	Current Pay Type
Lesko, Kara D	Salary	Commissioners	Commissioners	1,228.46	1000.11400.00000.0201	Salary
Kinnett, Patricia R	Part Time	Commissioners	Commissioners	528.00	1000.11201.00000.0001	Hourly
Black, Rachel R	Salary	Commissioners	Commissioners	1,267.15	1000.11321.00000.0202	Salary
Custer, Lena K	Salary	Commissioners	Commissioners	1,768.77	1000.11304.00000.0001	Salary
Cornett, Chandler D	Salary	Commissioners	Commissioners	1,346.15	1000.11487.00000.0380	Salary
Kiger, Layton T	Salary	Commissioners	Commissioners	227.09	1000.11021.00000.0380	Salary
Kiger, Layton T	Salary	Commissioners	Commissioners	1,375.00	1000.11488.00000.0380	Salary
Lough, Kristin N	Salary	Commissioners	Commissioners	1,384.62	1000.11702.00000.0002	Salary
Kenner, Brandon L	Salary	Commissioners	Commissioners	769.44	1000.11352.00000.0380	Salary
Spolarich, Ashley K	Salary	Commissioners	Commissioners	3,461.54	1000.11521.00000.0271	Salary
Burget, Jessica L	Salary	Commissioners	Commissioners	1,623.07	1000.11230.00000.9655	Salary
Wilson, Loudella E	Salary	Commissioners	Commissioners	1,757.85	1000.11418.00000.0380	Salary
Gilliland, Patrick T	Salary	Commissioners	Commissioners	2,100.85	1000.11225.00000.0235	Salary
Boyer III, William H	Salary	Commissioners	Commissioners	1,403.85	1000.11489.00000.0380	Salary
Rowe, Zoey J	Part Time	Commissioners	Commissioners	200.08	1000.11507.00000.0007	Salary
Taylor, Greg L	Salary	Commissioners	Commissioners	1,147.50	1000.11734.00000.0313	Salary
Fletcher, Nathaniel G	Salary	Commissioners	Commissioners	1,403.85	1000.11298.00000.0380	Salary
Shaw, Devin J	Salary	Commissioners	Commissioners	123.75	1000.11021.00000.0379	Salary
Shaw, Devin J	Salary	Commissioners	Commissioners	1,375.00	1000.11339.00000.0379	Salary
Stevens, Hunter L	Salary	Commissioners	Commissioners	1,346.15	1000.11630.00000.0380	Salary
Walls, Tanner L	Salary	Commissioners	Commissioners	1,346.15	1000.11580.00000.0380	Salary
Boller, Cameron L	Salary	Commissioners	Commissioners	1,403.85	1000.11040.00000.0379	Salary
Phillips, Monica D	Salary	Commissioners	Commissioners	1,403.85	1000.11439.00000.0379	Salary
Pearson, Layton A	Salary	Commissioners	Commissioners	991.62	1000.11412.00000.0660	Salary
Riehle, Brian A	Salary	Commissioners	Commissioners	43.54	1170.11021.00000.0005	Salary
Riehle, Brian A	Salary	Commissioners	Commissioners	2,438.46	1170.11815.00000.0005	Salary
Rusk, Leah R	Salary	Commissioners	Commissioners	1,346.15	1000.11838.00000.0380	Salary
Thomas, Chase O	Salary	Commissioners	Commissioners	1,346.15	1000.11500.00000.0380	Salary
Walke, Traci C	Salary	Commissioners	Commissioners	864.45	1000.11902.00000.0002	Salary
Brown, Christian C	Salary	Commissioners	Commissioners	2,038.46	1000.11480.00000.0380	Salary
Latzke, Kristen C	Salary	Commissioners	Commissioners	1,730.77	1000.11575.00000.0750	Salary

Distribution Report - Employee Name/Budget Account Code  
Check Date: 11/04/2022 Normal

Montgomery Count

Employee Name	Current Pay Group	Current Benefit Group	▲ History Benefit Group	Amount	Budget Account Code	Current Pay Type
Ratcliff, Nicole L	Salary	Commissioners	Commissioners	1,600.62	1000.11503.00000.0002	Salary
Bohlender, Jacob R	Salary	Commissioners	Commissioners	192.31	1000.11261.00000.0061	Salary
Kadinger, Matthew D	Salary	Commissioners	Commissioners	85.92	1000.11021.00000.0380	Salary
Kadinger, Matthew D	Salary	Commissioners	Commissioners	1,375.00	1000.11293.00000.0380	Salary
Cruse, Amanda L	Salary	Commissioners	Commissioners	2,692.31	4923.11821.00000.0271	Salary
Yohler, Courtne E	Salary	Commissioners	Commissioners	1,137.69	1000.11502.00000.0201	Salary
Greene, Paula L	Salary	Commissioners	Commissioners	1,403.85	1000.11493.00000.0380	Salary
Doty, Chelsey D	Salary	Commissioners	Commissioners	1,153.85	1000.11360.00000.0660	Salary
Punke, Deric L	Salary	Commissioners	Commissioners	1,986.54	1170.11024.00000.0005	Salary
Price, Ashtyn M	Salary	Commissioners	Commissioners	144.24	1000.11021.00000.0380	Salary
Price, Ashtyn M	Salary	Commissioners	Commissioners	1,346.15	1000.11224.00000.0380	Salary
Guard, Forest D	Salary	Commissioners	Commissioners	823.08	1000.11068.00000.0068	Salary
Jones, Deanna K	Salary	Commissioners	Commissioners	1,134.62	1000.11809.00000.9655	Salary
Miller, Farren M	Salary	Commissioners	Commissioners	1,991.31	9178.11524.00000.0235	Salary
Miller, Farren M	Salary	Commissioners	Commissioners	79.66	1000.11029.00000.0201	Salary
Mitchell, Braden D	Salary	Commissioners	Commissioners	287.44	1170.11021.00000.0005	Salary
Mitchell, Braden D	Salary	Commissioners	Commissioners	2,011.54	1170.11301.00000.0005	Salary
Eads, Hunter C	Salary	Commissioners	Commissioners	1,986.54	1170.11200.00000.0005	Salary
Foxworthy, Mason L	Salary	Commissioners	Commissioners	1,346.15	1000.11328.00000.0380	Salary
Dodds, Regina M	Salary	Commissioners	Commissioners	1,375.00	1000.11486.00000.0380	Salary
Teal, Anthony S	Salary	Commissioners	Commissioners	179.36	1170.11021.00000.0005	Salary
Teal, Anthony S	Salary	Commissioners	Commissioners	2,510.77	1170.11936.00000.0005	Salary
Parker, Conner D	Salary	Commissioners	Commissioners	1,218.28	1000.11491.00000.0380	Salary
Church, Erica E	Salary	Commissioners	Commissioners	1,137.69	1000.11502.00000.0202	Salary
Berry, Caleb T	Salary	Commissioners	Commissioners	1,986.54	1170.11222.00000.0005	Salary
Little, Lauren R	Salary	Commissioners	Commissioners	454.18	1000.11021.00000.0380	Salary
Little, Lauren R	Salary	Commissioners	Commissioners	1,375.00	1000.11495.00000.0380	Salary
Kelly, Rebekah L	Salary	Commissioners	Commissioners	1,346.15	1000.11501.00000.0380	Salary
Hedrick, Nicholas R	Salary	Commissioners	Commissioners	1,157.31	1000.11209.00000.0271	Salary
Curtis, Shelby J	Salary	Commissioners	Commissioners	109.11	1170.11021.00000.0005	Salary
Curtis, Shelby J	Salary	Commissioners	Commissioners	2,036.54	1170.11383.00000.0005	Salary

Distribution Report - Employee Name/Budget Account Code  
Check Date: 11/04/2022 Normal

Montgomery County

Employee Name	Current Pay Group	Current Benefit Group	History Benefit Group	Amount	Budget Account Code	Current Pay Type
Newlin, Timothy D	Salary	Commissioners	Commissioners	245.50	1000.11021.00000.0380	Salary
Newlin, Timothy D	Salary	Commissioners	Commissioners	1,375.00	1000.11302.00000.0380	Salary
Stonebraker, Casey T	Salary	Commissioners	Commissioners	1,490.38	1000.11703.00000.0380	Salary
Cox, Nancy L	Salary	Commissioners	Commissioners	1,562.62	1000.11300.00000.0003	Salary
Parker, Samantha R	Salary	Commissioners	Commissioners	1,157.31	1000.11809.00000.0009	Salary
Sweeney, Megan R	Salary	Commissioners	Commissioners	1,220.08	1000.11209.00000.0750	Salary
Weller, Mary J	Part Time	Follow the Fund	Follow the Fund	517.50	1189.11168.00000.0004	Hourly
Barth, Katie M	Salary	Follow the Fund	Follow the Fund	1,326.92	8300.11065.00000.0610	Salary
Cevela, Jamie L	Salary	Follow the Fund	Follow the Fund	1,375.00	9131.11241.00000.0005	Salary
Douglas, Scott K	Salary	HD	HD	1,153.85	1159.11162.00000.0610	Salary
Northcutt, Adrienne R	Salary	HD	HD	2,038.46	1159.11516.00000.0610	Salary
Orr, Donald S	Salary	HD	HD	1,523.77	1159.11216.00000.0610	Salary
Bushong, Cynthia D	Salary	HD	HD	1,384.62	8120.11105.00000.0610	Salary
Stadler, Mia R	Salary	HD	HD	1,326.92	1159.11061.00000.0610	Salary
Endicott, Lindsey L	Salary	HD	HD	1,096.15	1206.11218.00000.0610	Salary
Forman, Hannah R	Part Time	HD	HD	777.00	8300.11065.00000.0610	Hourly
Teague, Diamond M	Salary	HD	HD	1,500.00	1159.11309.00000.0610	Salary
Powell, Daniel E	Salary	Highway	Highway	1,170.32	1176.11076.00000.0529	Salary
Powell, Daniel E	Salary	Highway	Highway	563.49	1173.11090.00000.0529	Salary
Dulin, Kristopher M	Salary	Highway	Highway	44.31	1176.11021.00000.0529	Salary
Dulin, Kristopher M	Salary	Highway	Highway	1,024.00	1176.11452.00000.0529	Salary
Dulin, Kristopher M	Salary	Highway	Highway	551.38	1173.11090.00000.0529	Salary
Martin, Donald D	Salary	Highway	Highway	1,130.39	1176.11075.00000.0529	Salary
Martin, Donald D	Salary	Highway	Highway	879.19	1173.11090.00000.0529	Salary
Beavers, Edward J	Salary	Highway	Highway	1,912.15	1176.11375.00000.0529	Salary
Stull, James D	Salary	Highway	Highway	223.36	1176.11071.00000.0529	Salary
Stull, James D	Salary	Highway	Highway	1,657.56	1173.11090.00000.0529	Salary
Michael, Dakota T	Salary	Highway	Highway	2,091.00	1176.11018.00000.0529	Salary
Jenkins, Cole T	Salary	Highway	Highway	866.45	1176.11007.00000.0529	Salary
Jenkins, Cole T	Salary	Highway	Highway	44.31	1173.11021.00000.0529	Salary
Jenkins, Cole T	Salary	Highway	Highway	708.93	1173.11090.00000.0529	Salary

Distribution Report - Employee Name/Budget Account Code  
Check Date: 11/04/2022 Normal

Montgomery County

Employee Name	Current Pay Group	Current Benefit Group	History Benefit Group	Amount	Budget Account Code	Current Pay Type
Olin, Matthew J	Salary	Highway	Highway	666.82	1176.11506.00000.0529	Salary
Olin, Matthew J	Salary	Highway	Highway	1,555.91	1173.11090.00000.0529	Salary
Lowe, Albert L	Salary	Highway	Highway	681.86	1176.11641.00000.0529	Salary
Lowe, Albert L	Salary	Highway	Highway	1,591.02	1173.11090.00000.0529	Salary
Allen, Michael J	Salary	Highway	Highway	85.23	1176.11021.00000.0529	Salary
Allen, Michael J	Salary	Highway	Highway	909.15	1176.11085.00000.0529	Salary
Allen, Michael J	Salary	Highway	Highway	1,363.73	1173.11090.00000.0529	Salary
Hedge, Jeffery A	Salary	Highway	Highway	549.26	1176.11402.00000.0529	Salary
Hedge, Jeffery A	Salary	Highway	Highway	1,647.78	1173.11090.00000.0529	Salary
Blanton, Ronald L	Salary	Highway	Highway	2,272.88	1176.11859.00000.0529	Salary
Herron, Amber L	Salary	Highway	Highway	2,185.42	1176.11159.00000.0529	Salary
Ranard, Brennan D	Salary	Highway	Highway	639.78	1176.11077.00000.0529	Salary
Ranard, Brennan D	Salary	Highway	Highway	1,066.30	1173.11090.00000.0529	Salary
Stephens, William C	Salary	Highway	Highway	1,714.65	1176.11019.00000.0529	Salary
Heggemeier, Loren W	Salary	Highway	Highway	578.29	1176.11073.00000.0529	Salary
Heggemeier, Loren W	Salary	Highway	Highway	1,073.98	1173.11090.00000.0529	Salary
Riddle, Terry L	Salary	Highway	Highway	1,626.12	1176.11752.00000.0529	Salary
McCoy, Bradley J	Salary	Highway	Highway	630.13	1176.11319.00000.0529	Salary
McCoy, Bradley J	Salary	Highway	Highway	995.99	1173.11090.00000.0529	Salary
Brady, Scott W	Salary	Highway	Highway	829.76	1176.11257.00000.0529	Salary
Brady, Scott W	Salary	Highway	Highway	1,294.43	1173.11090.00000.0529	Salary
Steelsmith, Seth A	Salary	Highway	Highway	664.10	1176.11072.00000.0529	Salary
Steelsmith, Seth A	Salary	Highway	Highway	1,379.28	1173.11090.00000.0529	Salary
Melvin, Brent D	Salary	Highway	Highway	578.28	1176.11008.00000.0529	Salary
Melvin, Brent D	Salary	Highway	Highway	1,073.95	1173.11090.00000.0529	Salary
Lough, Jacob N	Salary	Highway	Highway	2,664.65	1176.11052.00000.0529	Salary
Surber, Aaron S	Salary	Highway	Highway	1,004.30	1176.11009.00000.0529	Salary
Surber, Aaron S	Salary	Highway	Highway	571.08	1173.11090.00000.0529	Salary
Gustafson, Kevin E	Salary	Highway	Highway	1,575.38	1176.11020.00000.0529	Salary
Northcutt, Isaac M	Salary	Highway	Highway	503.56	1176.11070.00000.0529	Salary
McCoy, Carson	Salary	Highway	Highway	1,378.46	1176.11074.00000.0529	Salary

Distribution Report - Employee Name/Budget Account Code  
Check Date: 11/04/2022 Normal

Montgomery Count

Employee Name	Current Pay Group	Current Benefit Group	History Benefit Group	Amount	Budget Account Code	Current Pay Type
McCoy, Carson	Salary	Highway	Highway	196.92	1173.11090.00000.0529	Salary
Lough, Cody A	Salary	Highway	Highway	243.92	1176.11021.00000.0529	Salary
Lough, Cody A	Salary	Highway	Highway	935.02	1176.11080.00000.0529	Salary
Lough, Cody A	Salary	Highway	Highway	691.10	1173.11090.00000.0529	Salary
Sweet, Mark A	Salary	Highway	Highway	206.53	1176.11012.00000.0529	Salary
Sweet, Mark A	Salary	Highway	Highway	1,445.70	1173.11090.00000.0529	Salary
Adams, Michael S	Salary	Highway	Highway	905.84	1176.11429.00000.0529	Salary
Adams, Michael S	Salary	Highway	Highway	669.54	1173.11090.00000.0529	Salary
Cornett, Alexander J	Salary	Highway	Highway	711.43	1176.11011.00000.0529	Salary
Cornett, Alexander J	Salary	Highway	Highway	914.69	1173.11090.00000.0529	Salary
Victory-Kosinski, Kaytlynn R	Salary	Statewide 911	Statewide 911	1,762.48	4900.11212.00000.0303	Salary
Cope, Vicki R	Salary	Statewide 911	Statewide 911	750.00	1222.11005.00000.0303	Salary
Cope, Vicki R	Salary	Statewide 911	Statewide 911	196.08	4900.11021.00000.0303	Salary
Cope, Vicki R	Salary	Statewide 911	Statewide 911	1,742.78	4900.11307.00000.0303	Salary
Melvin, Kathryn J	Salary	Statewide 911	Statewide 911	313.80	4900.11021.00000.0303	Salary
Melvin, Kathryn J	Salary	Statewide 911	Statewide 911	1,673.44	4900.11613.00000.0303	Salary
Pruett, Dustin L	Salary	Statewide 911	Statewide 911	1,576.93	4900.11043.00000.0303	Salary
Wiles, Courtney D	Salary	Statewide 911	Statewide 911	144.04	4900.11021.00000.0303	Salary
Wiles, Courtney D	Salary	Statewide 911	Statewide 911	1,129.10	4900.11830.00000.0303	Salary
Browning, Sinahi U	Part Time	Statewide 911	Statewide 911	661.54	4900.11413.00000.0303	Hourly
McNulty, Alayna R	Salary	Statewide 911	Statewide 911	266.73	4900.11021.00000.0303	Salary
McNulty, Alayna R	Salary	Statewide 911	Statewide 911	1,673.44	4900.11813.00000.0303	Salary
Clouser, Cade M	Salary	Statewide 911	Statewide 911	236.56	4900.11021.00000.0303	Salary
Clouser, Cade M	Salary	Statewide 911	Statewide 911	1,576.93	4900.11513.00000.0303	Salary
Martin, Tiffany D	Salary	Statewide 911	Statewide 911	1,024.92	4900.11713.00000.0303	Salary
<b>304</b>				<b>400,857.91</b>		

# Minutes: October 24, 2022

Wednesday, November 9, 2022

5:03 PM



# Printout

Thursday, November 10, 2022 9:26 AM

MINUTES  
MONTGOMERY COUNTY COMMISSIONER MEETING  
MONDAY, OCTOBER 24, 2022

The Montgomery County Commissioners met in regular session on Monday, October 24, 2022 at 8:00 am at the Montgomery County Government Center, 1580 Constitution Row – Room E109, Crawfordsville, Indiana.

**CALL TO ORDER**

On call of the roll, the members of the Board were shown to be present as follows: President, John E. Frey; Vice President James D. Fulwider; and Commissioner Dan Guard.

Also present: County Attorney Dan Taylor; County Administrator Tom Klein; Auditor Jennifer Andel; Building Administrator Marc Bonwell; Sheriff Ryan Needham; Highway Director Jake Lough; Assessor Sherri Bentley; Health Administrator Adrienne Northcutt; EMA Director Shari Harrington; and 911 Director Sherri Henry.

**PLEDGE & PRAYER**

Board President Commissioner John Frey led the pledge of allegiance and Jim Fulwider led the prayer.

**CONSENT AGENDA**

Approval of Claims: October 11, 2022 to October 24, 2022

Accounts Payable: \$633,044.19

Approve Minutes: October 11, 2022

VAF Copier Lease: Commissioners Office -

Ricoh IM C2500 Multifunction Copier for use in the Commissioner's Office. Lease & maintenance will be paid on an ANNUAL basis \$1,440.96.

Approve Carpet Quotes: Probation Department

Received two quotes: Town & Country - \$4,885.45; Zahn's Floor Covering - \$6,393.50. Recommended approving the lowest quote submitted by Town & Country. CCD funds will be used.

*Commissioner Guard moved to approve the consent agenda. Seconded by Commissioner Fulwider.*

*Motion carried 3-0 in favor.*

**NEW BUSINESS**

Presentation by MCCF Kelly Taylor: High-Quality Early Learning in Montgomery County -

A recent study has shown the cost of inadequate child care in Montgomery County due to absences in the workplace results in a loss to businesses of \$7.9 million annually due to absences and turnover. Ms. Taylor stated *"as a matching gift challenge from an anonymous donor, effective September 7, for every \$1 cash gift received by MCCF, the donor will match with \$1. This creates the perfect opportunity for our community to come together and meet this challenge."* November 10<sup>th</sup> is the kickoff for the project which Ms. Taylor referred to as a "partnership" consisting of the City, Tempur Sealy, MCCF Board of Directors which is now their top priority. MCCF is requesting that the County donate the former County building located at 110 West South Boulevard. Commissioner Frey commented that this proposal is an investment in our community. *Commissioner Frey moved to donate the former South Boulevard County Building to the MCCF. Seconded by Commissioner Guard.* Commissioner Guard stated that the amount of return will be phenomenal for a \$4 million dollar investment in kids. Commissioner Fulwider thanked the Mayor and the Board members, *"it is our future."* *Motion carried 3-0 votes in favor.* {See Attached PowerPoint Presentation}



#### County Employee Health Insurance 2023 Renewal –

APEX Rep Bill Sylvester – Stated he has met with staffur Health Insurance Agency, to review the proposed renewal for health insurance benefits. Upon review of the proposed renewal, we believe that we can maintain the current medical premium rate structure for the employees of Montgomery County. This would mean that the rates will have remained the same for three years for our employees. We also believe that we can offer a premium holiday in November and December of this year. Finally, we are recommending that we increase the County's contribution to each plan participant's H.S.A. by \$250. Maintaining the current medical premium rates, offering premium holidays and increasing the contribution to H.S.A. accounts will help us remain competitive in providing benefits to our employees. Also, APEX obtained quotes for a traditional health insurance plan. The quote is 24% greater than the quote for our existing plan. The increase in contribution to the H.S.A. accounts will be paid from the General Fund. *Commissioner Fulwider moved to accept the recommendation and approve the 2023 County Health Insurance Renewal with APEX increasing life insurance to \$25,000; add additional \$250 to HSA providing employees agree to an annual wellness screening and a premium holiday for November and December. Seconded by Commissioner Guard.* Commissioner Guard stated that the plan can be difficult to navigate, but the employees have to be involved in the process. Sheriff Needham commented that the Commissioners just approved to invest in youth, so now he believes they should invest in the employees. Navigating the system is a tremendous headache for employees and some employees are choosing not to use the insurane for that reason. Some employees have reported being turned into collections. Sheriff Needham requested that the Commissioners consider either hiring an HR person or assigning an employee to be the point person and work as the insurance specialist so that the employees do not have to deal with the headaches. Commissioner Fulwider stated that insurance is complex and the current County employee's insurance is even more complex. *Motion carried 3-0 votes in favor.*

#### Open Bids: Constitution Row Project

Attorney Dan Taylor opened one bid received from Milestone for the pavement improvement project on Constitution Row in the amount of \$131,000. *Commissioner Fulwider moved to take the Milestone bid under advisement for review by USI. Seconded by Commissioner Guard. Motion carried 3-0 votes in favor.*

#### DES Work Order: Additional Work for Purchase and Over-seeding the Landfill - \$8,000 -

This is an additional Work Order for the purchase and overseeding the landfill with wild flower seeds to reduce need for ongoing mowing activities. Wildflowers are mowed once annually. *Commissioner Guard moved to approve the DES Work Order for the landfill project. Seconded by Commissioner Fulwider. Motion carried 3-0 votes in favor.*

#### DES Work Order: Phase I Environmental Site Assessment @ 110 W South Boulevard - \$2,915.23

DES Engineering will perform a Phase I Environmental Site Assessment in accordance with the requirements of the American Society for Testing Materials (ASTM) E 1527-13. *Commissioner Fulwider moved to approve the DES Work Order for the Phase 1 Environmental Site Assessment of the south Boulevard Building. Seconded by Commissioner Guard. Motion carried 3-0 votes in favor.*

#### LPA Consulting Contract - United - Bridge 63 on CR625E north of State Road 32

Rehab (Federal Aid) - \$183,600; LPA Consulting Contract - United - Bridge 66 on CR300S east of US136 Rehab (Federal Aid) - \$187,675; LPA Consulting Contract - United - Bridge 175 on CR550E south of Ladoga Rehab (Federal Aid) - \$206,600 -

Highway Director Jake Lough stated that the County applied for and received funding for the rehab of Bridges 63, 66 & 175. The total cost estimate for all three bridges is \$3,674,000 and is an 80/20 project.



The County's portion is \$577,875. *Commissioner Fulwider moved to approve the three LPA Contracts. Seconded by Commissioner Guard. Motion carried 3-0 votes in favor.*

Vault 44.01 Ltd. -

Preston Evans, Vault 44.01 Ltd representative explained to the Commissioners that this is actually a research project to do seismic testing planned around Linden for the Ethanol Plant. The initial testing will be done in the County's right-of-way. Vault is continuing to work with landowners to come to an agreement to use their land, those negotiations are not quite there yet.

*Commissioner Guard moved to approve a Proclamation supporting Operation Green Light for Veterans. Seconded by Commissioner Fulwider. Motion carried 3-0 votes in favor.*

### **PROCLAMATION OF THE MONTGOMERY COUNTY BOARD OF COMMISSIONERS SUPPORTING OPERATION GREEN LIGHT FOR VETERANS**

***WHEREAS***, the residents of Montgomery County, Indiana have great respect, admiration, and the utmost gratitude for all of the men and women who have selflessly served our country and this community in the Armed Forces; and

***WHEREAS***, the contributions and sacrifices of the men and women who served in the Armed Forces have been vital in maintaining the freedoms and way of life enjoyed by our citizens; and

***WHEREAS***, Montgomery County seeks to honor these individuals who have paid the high price for freedom by placing themselves in harm's way for the good of all; and

***WHEREAS***, Veterans continue to serve our community in the American Legion, Veterans of Foreign Wars, religious groups, civil service, and by functioning as County Veteran Service Officers in 29 states to help fellow former service members access more than \$52 billion in federal health, disability and compensation benefits each year; and

***WHEREAS***, Approximately 200,000 service members transition to civilian communities annually; and

***WHEREAS***, an estimated 20 percent increase of service members will transition to civilian life in the near future; and

***WHEREAS***, studies indicate that 44-72 percent of service members experience high levels of stress during transition from military to civilian life; and

***WHEREAS***, Active Military Service Members transitioning from military service are at a high risk for suicide during their first year after military service; and

***WHEREAS***, the National Association of Counties encourages all counties, parishes and boroughs to recognize Operation Green Light for Veterans; and





**WHEREAS**, the Montgomery County appreciates the sacrifices of our United State Military Personnel and believes specific recognition should be granted;

**THEREFORE BE IT PROCLAIMED**, with designation as a Green Light for Veterans County, the Board of Commissioners of Montgomery County hereby declares from November 7 through Veterans Day, November 11<sup>th</sup> 2022 a time to salute and honor the service and sacrifice of our men and women in uniform transitioning from Active Service;

**THEREFORE, BE IT FURTHER PROCLAIMED**, that in observance of Operation Green Light, the Board of Commissioners of Montgomery County encourages its citizens in patriotic tradition to recognize the importance of honoring all those who made immeasurable sacrifices to preserve freedom by displaying a green light in a window of their place of business or residence.

*Proclaimed this 24<sup>th</sup> day of October in the year 2022.*

#### ORDINANCES

Final Reading: Ordinance 2022-29 - Creating the 2023 Family Recovery Court Grant Fund – \$100,637 grant award –

Grant will provide funding for a PCS Coordinator salary & benefits, Program supplies, participant incentives, drug testing supplies, participant services (Barrier Buster & Emergency Needs), cell phone, travel/training. *Commissioner Fulwider moved to approve Ordinance 2022-29. Seconded by Commissioner Guard. Motion carried 3-0 votes in favor.*

Final Reading: Ordinance 2022-30 - Creating the 2023 Montgomery County Drug Court Program Grant Fund - \$80,442 grant award –

Grant will provide funding for Drug Court Case Manager/Probation Officer Salary, benefits, office supplies, cell phone and travel/training. *Commissioner Guard moved to approve Ordinance 2022-30. Seconded by Commissioner Fulwider. Motion carried 3-0 votes in favor.*

Final Reading: Ordinance 2022-31 - Creating the Montgomery County Probation CY2023 Community Corrections & Justice Reinvest Grant Fund - \$164,890 grant award –

Grant will provide funding for the ongoing support of two probation officers salaries & benefits, gas/fuel incentives (Probationer & Staff), Program Manuals, dues, cell phone, vehicle insurance, conferences (travel/training, lodging and travel/mileage). *Commissioner Fulwider moved to approve Ordinance 2022-31. Seconded by Commissioner Guard. Motion carried 3-0 votes in favor.*

Final Reading: Ordinance 2022-32 - Creating the 2023 Veterans Treatment Court Grant Fund -

\$103,708 grant award - grant will provide funding for PSC Coordinator Salary & benefits, Mentor Coordinator and Mentor Education/Supplies. *Commissioner Fulwider moved to approve Ordinance 2022-32. Seconded by Commissioner Guard. Motion carried 3-0 votes in favor.*

Introduction: Ordinance 2022-33 - Creating the 2023 HMEP Training Grant - \$16,000 -

Project Title: PHMEP-2023-2023 HMEP Confined Space Training.

Introduction: Ordinance 2022-34 - 2022 EM-HS/CERT Training Room Grant - \$92,504.43 -

Project Title: Priority 2022 CERT Program Training Room and Mass Notification System Grant.





Introduction: Ordinance 2022-35 - 2022 Cybersecurity Grant MSCO - \$145,991.28 -  
Project Title: Priority Montgomery County 2022 Law Enforcement Cybersecurity Terrorism.

#### OTHER BUSINESS

Commissioners presented the “Award for Exceptional Service” to outgoing EMA Director Shari Harrington. Commissioners thanked Harrington for all of her dedication to the County through her work as the County EMA Director. Commissioner Fulwider added that Harrington first worked at the Health Department and then moved up to Health Administrator before she moved on to her current position as EMA Director.

Open Annual Highway Department Bids –  
Attorney Taylor opened the following bids:

- 1) Martin-Marietta
- 2) Pro Ag Inc.
- 3) Stello Signs
- 4) Ceres Solutions
- 5) Mike Green, Inc.
- 6) Newton Oil
- 7) Cargil
- 8) Asphalt Materials
- 9) E-3 Bridge
- 10) Morton Salt
- 11) Pomp’s Tires & Disposal
- 12) Putnam County Aggregates
- 13) Engineering Aggregates
- 14) US Aggregates
- 15) Great Lakes Chloride
- 16) Rejuv Tech
- 17) Korks Dust Control
- 18) Co-Alliance
- 19) Lincoln Park Stone
- 20) CivilCon

*Commissioner Fulwider moved to take the Annual High Bids under advisement. Seconded by Commissioner Guard. Motion carried 5-0 votes in favor.*

Commissioner Frey stated that the Commissioners have heard from folks on commercial solar. The Plan Commission are currently looking text amendments. The Commissioners have posted a Q&A in both area newspapers on the subject.

#### ADJOURNMENT

There being no further business before the Board, *Commissioner Fulwider moved to adjourn. Motion passed 3-0 votes in favor.* Meeting adjourned @ 9:33 am.

Minutes prepared by Commissioners Executive Assistant Lori Dossett.  
The next regular meeting will be held on Monday, November 14, 2022 @ 8:00 am @ Montgomery County Government Center-Room E-109.

MONTGOMERY COUNTY BOARD OF COMMISSIONERS:



---

John E. Frey, Board President

Attest:

---

Jennifer Andel, Auditor



# High-Quality Early Learning in Montgomery County

KELLY TAYLOR

MONTGOMERY COUNTY COMMUNITY FOUNDATION





# Economic Impact of Lack of Access to Child Care



## ECONOMIC IMPACT OF LACK OF ACCESS TO CHILD CARE TO RURAL AND URBAN INDIANA COUNTIES

	Impact on Indiana Businesses	Impact on the Economy	Impact on Tax Revenue
Montgomery	-\$7.9 million	\$4.9 million	-\$808,000
Indiana	-\$1.8 billion	-\$1.1 billion	-\$118.8 million

- Lack of access to child care in Montgomery County costs businesses **\$7.9 million** annually due to absences and turnover.
- Costs the economy **\$4.9 million** loss of worker earnings cuts into spending.
- Costs local government **\$808,000** annually due to a decline in earnings affecting tax contributions.
- A study conducted by the IU Public Policy Institute and Early Learning Indiana calculated the effects of inadequate child care options resulting in work disruptions such as employee absences and turnover.





# Why Child Care?

*Child care is an economic development issue that is impacting our community now with a two generational impact.*

## REAL ECONOMIC IMPACT

It is estimated that Indiana will lose between \$5.7B and \$8.6B over the next 10 years due to a lack of early care and education.

## WORKFORCE

We need everyone working. Unemployment rates are at record lows. Child care is an essential infrastructure.

A recent US Chamber of Commerce Foundation Study found that 58% of working parents reported leaving work because they were unable to find child care solutions that met their needs.

## TALENT ATTRACTION

What young family will move to a community without first securing child care?





# Why Child Care?

- Ages 0-5 most critical years of brain development
  - **85%** of a child's capacity to learn is developed by age 5
- Access to quality child care can **increase school success** and **reduce the likelihood of crime**
- Child care is key to a **robust economy** and **successful businesses**
- Studies indicate a return on investment of **up to \$7 for every \$1**
- Investment in your **current and future workforce** by offering high-quality care





# High-quality child care is economic development and a quality of life factor for communities.







# Why Child Care?

Child care is an economic development issue that is impacting our community now with a two generational impact.

## REAL ECONOMIC IMPACT

It is estimated that Indiana will lose between \$5.7B and \$8.6B over the next 10 years due to a lack of early care and education.

## WORKFORCE

We need everyone working. Unemployment rates are at record lows. Child care is an essential infrastructure.

A recent US Chamber of Commerce Foundation Study found that 58% of working parents reported leaving work because they were unable to find child care solutions that met their needs.

## TALENT ATTRACTION

What young family will move to a community without first securing child care?







## 55 percent of Hoosiers live in a child care desert

Montgomery County is a child care desert.

Children under 6 in need of care  $\approx$  2,000

Seats available  $\approx$  750 (38%)

High-quality licensed seats  $\approx$  223 (11.1%)

Source: Bipartisan Policy Center, Early Learning Advisory Council





# Why Child Care?

## Now is the time to build a child care system that works

- Partnerships must be established to create a long-term, sustainable solution for our community
- Partnerships must include government, business and nonprofits
- If we don't have safe, high-quality child care, how will we attract families to our community?





# Our Plan:

A new, high-quality child care facility in Montgomery County

**Location:** South Boulevard

**Number of children:** 124-134 seats for infant through age 5

- Renovate and add to the facility to create a 14,000 square foot facility
- Partner with a high-quality provider to operate the facility
- Create a workforce pipeline with the local High Schools

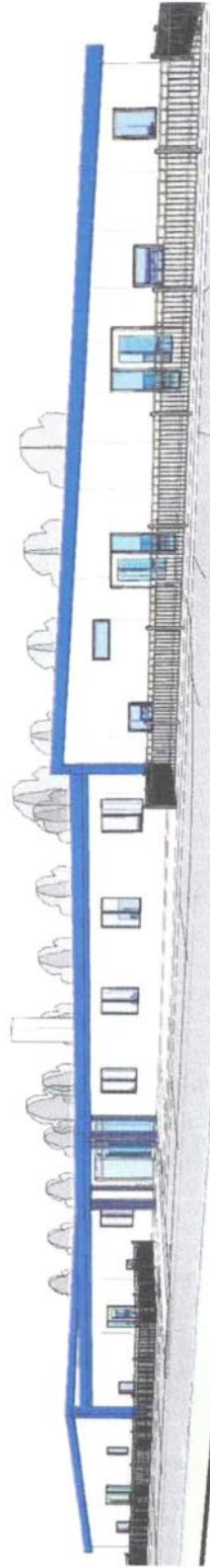
**Funding partnerships:** Local government, MCCF, businesses







# South Boulevard Building



MONTGOMERY COUNTY  
Early Childhood  
Coalition



MONTGOMERY COUNTY  
COMMUNITY  
FOUNDATION  
*Looking Forward. Living Better.*

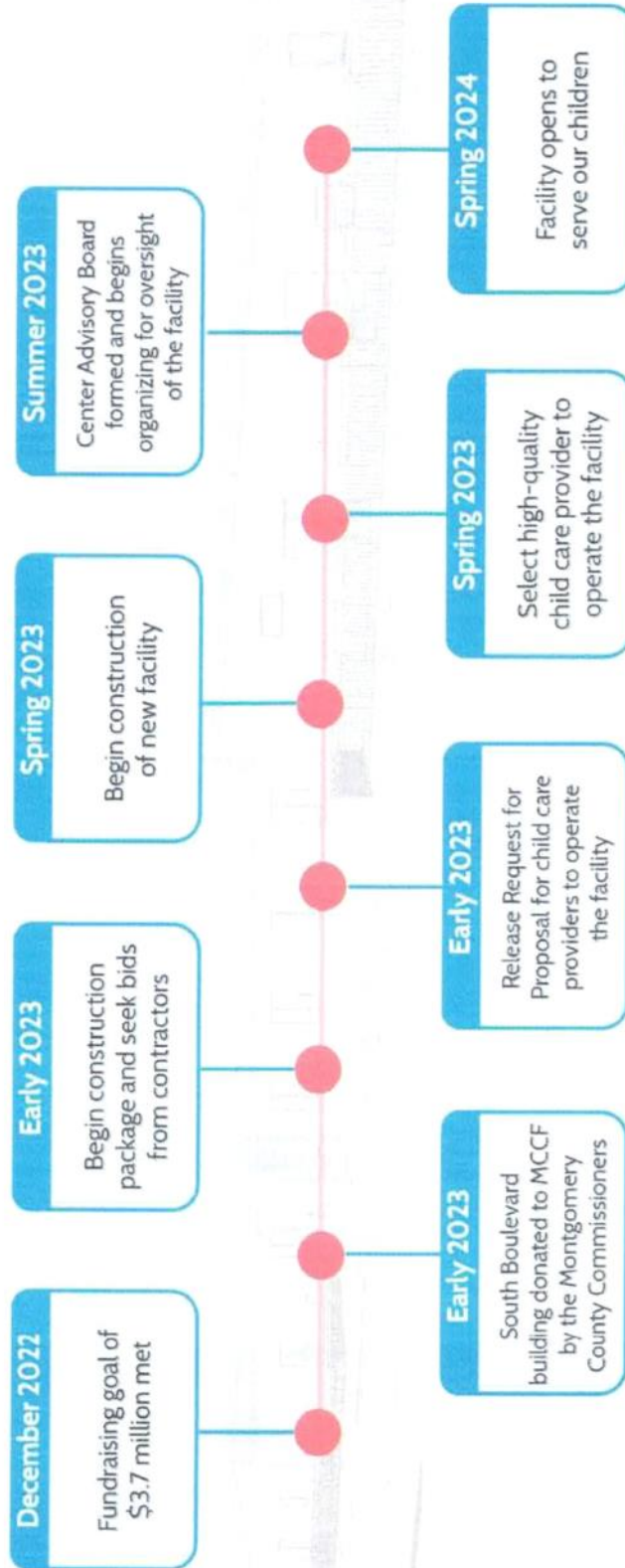




# Montgomery County Early Learning Center Projected Timeline



MONTGOMERY COUNTY  
Early Childhood  
Coalition



\* Timeline is an estimate and subject to many variables



# How you can support Montgomery County's greatest asset: Our Children.

## Super Hero

**\$500,000 or more**

**Named Spaces:** Special recognition in entry and reception areas, plus one classroom.

**Other Benefits:**

- Seat on the Center Advisory Board
- Priority seating for your employees
- Opportunity to purchase and hold seats

5 opportunities available

## Champion

**\$250,000 - \$499,999**

**Named Space:** Gross motor skill/playroom or school-age multi-purpose room.

**Other Benefits:**

- Seat on the Center Advisory Board
- Priority seating for your employees

4 opportunities available

## Most Valuable Playmaker

**\$100,000 - \$249,999**

**Named Space:** One of the six high-quality playgrounds that give children a fun place to be active, social, and play.

6 opportunities available

## All Star

**\$50,000 - \$99,999**

**Named Space:** Choice of teacher planning workspace, buggy storage area, kitchen, family conference area, or mother's nursing room.

5 opportunities available

# Project Goal: \$3.7 Million

*Payments will be collected by MCCF, a 501(C)3 Nonprofit Organization*



# Gifts to Fund the Child Care Center

Matching Gift Opportunity:

**\$1:\$1 *up to* \$500,000**







# The Results

- An engaged, productive workforce with access to high-quality child care.
- A model for other rural communities.
- A transformational project for our community, children and businesses!





# 2023 Holiday Schedule

Wednesday, November 9, 2022 5:05 PM



## **MONTGOMERY COUNTY COMMISSIONERS**

**John E. Frey, President**  
**Jim Fulwider, Vice President**  
**Dan Guard, Member**

### **2023 HOLIDAY SCHEDULE**

New Year's Day	Monday, January 2
Martin Luther King, Jr. Day	Monday, January 16
President's Day	Monday, February 20
Good Friday	Friday, April 7
Primary Election Day	Tuesday, May 2
Memorial Day	Monday, May 29
Juneteenth	Monday, June 19
Independence Day	Tuesday, July 4
Labor Day	Monday, September 4
Election Day	Tuesday, November 7
Veteran's Day	Friday, November 10
Thanksgiving Day	Thursday, November 23
Day after Thanksgiving	Friday, November 24
Christmas Day	Monday, December 25
Day After Christmas	Tuesday, December 26

The Board of Montgomery County Commissioners hereby approves this 2023 Holiday Schedule for the employees of Montgomery County, the \_\_\_\_ day of November, 2022.

\_\_\_\_\_  
John E. Frey, President   Jim Fulwider, Vice President   Dan Guard, Member

1580 Constitution Row, Crawfordsville, IN 47933  
montgomerycounty.in.gov

# Highway Department Annual Bid Awards

Wednesday, November 9, 2022

5:10 PM

The below bids were opened on October 24, 2022

Attorney Taylor:

- 1) Martin-Marietta
- 2) Pro Ag Inc.
- 3) Stello Signs
- 4) Ceres Solutions
- 5) Mike Green, Inc.
- 6) Newton Oil
- 7) Cargil
- 8) Asphalt Materials
- 9) E-3 Bridge
- 10) Morton Salt
- 11) Pomp's Tires & Disposal
- 12) Putnam County Aggregates
- 13) Engineering Aggregates
- 14) US Aggregates
- 15) Great Lakes Chloride
- 16) Rejuv Tech
- 17) Korks Dust Control
- 18) Co-Alliance
- 19) Lincoln Park Stone
- 20) CivilCon

# Health Board Appointment

Thursday, November 10, 2022 9:48 AM

Health Administrator Adrienne Northcutt advised she spoke with the health board on October 26th regarding a new health board member. The Board presented 3 recommendations: Christine Amadon, Greg Woodsmall, and Kyle Hunt.

# Stifel Engagement Agreement

Thursday, November 10, 2022 9:49 AM



October 27, 2022

Montgomery County, Indiana  
110 W South Blvd  
Crawfordsville, IN 47933

Re: Underwriter/Placement Agent Engagement Relating to Potential Municipal Securities Transaction for Montgomery County, Indiana

Dear Mr. Frey:

Montgomery County, Indiana ("Obligor") and Stifel, Nicolaus & Company, Incorporated ("Stifel") hereby confirm they are engaged in discussions related to a potential issue of (or series of issuances of) municipal securities related to the Nucor Road Bridge Project (the "Issue") and to formalize Stifel's role as underwriter or placement agent with respect to the Issue.

***Engagement as Underwriter/Placement Agent***

Obligor is aware of the "Municipal Advisor Rule" of the Securities and Exchange Commission ("SEC") and the underwriter exclusion from the definition of "municipal advisor" for a firm serving as an underwriter or placement agent for a particular issuance of municipal securities. Obligor hereby designates Stifel as an underwriter or placement agent for the Issue. Obligor expects that Stifel will provide advice to Obligor on the structure, timing, terms and other matters concerning the Issue.

If this engagement takes the form of a placement, at the closing of the placement, Obligor will be asked to sign a Placement Agent Agreement in the form attached hereto, providing for more detailed terms of this engagement as well as representations and warranties;

***Limitation of Engagement***

It is Obligor's intent that Stifel serve as an underwriter or placement agent for the Issue, subject to satisfying applicable procurement laws or policies, formal approval of the conduit issuer of the securities ("Issuer"), finalizing the structure of the Issue and executing a bond purchase agreement or placement agent agreement, as applicable. While Obligor presently engages Stifel as the underwriter or placement agent for the Issue, this engagement letter is preliminary, nonbinding and may be terminated at any time by Obligor, without penalty or liability for any costs incurred by Stifel. Furthermore, this engagement letter does not restrict Obligor from selecting an underwriter/placement agent for the Issue other than Stifel or selecting an underwriting syndicate that does not include Stifel.

***Confidentiality***

Under the SEC's "Municipal Advisor Rule," Obligor might be classified as an "Obligated Person" if bonds are issued through a municipal conduit issuer. It is very important that Obligor keep this information confidential until Obligor executes this Engagement Letter with Stifel and our role is confirmed with the Issuer.

***Disclosures Required by MSRB Rule G-17 Concerning the Role of the Underwriter or Placement Agent***

The Obligor confirms and acknowledges the following disclosures, as required to be delivered to issuers by the Municipal Securities Rulemaking Board (MSRB) Rule G-17 as set forth in MSRB Notice 2019-20 (Nov. 8, 2019)<sup>1</sup>:

The following G-17 conflict of interest disclosures are broken down into three types, including: 1) dealer-specific conflicts of interest disclosures (if applicable); 2) transaction-specific disclosures (if applicable); and 3) standard disclosures.

1. **Dealer-Specific Conflicts of Interest Disclosures**

Stifel has not identified any actual or potential<sup>2</sup> material conflicts of interest.

2. **Transaction-Specific Disclosures: Disclosures Concerning Complex Municipal Securities Financing:**

- o Since we have not recommended a “complex municipal securities financing” to the Issuer or Obligor, additional disclosures regarding the financing structure for the Bonds are not required under MSRB Rule G-17.

3. **Standard Disclosures**

A. **Disclosures Concerning the Underwriter’s or the Placement Agent’s Role:**

- o MSRB Rule G-17 requires an underwriter and a placement agent to deal fairly at all times with issuers, obligated persons, and investors.
- o The underwriter’s primary role is to purchase the Bonds with a view to distribution in an arm’s-length commercial transaction with the Issuer. The placement agent’s primary role in the transaction is to facilitate the sale and purchase of the securities between the issuer and one or more investors for which the placement agent will receive compensation in an arm’s-length commercial transaction with the issuer. The underwriter/placement agent has financial and other interests that differ from those of the Issuer.
- o Unlike a municipal advisor, the underwriter or the placement agent does not have a fiduciary duty to the Issuer or to you under the federal securities laws and are, therefore, not required by federal law to act in the best interests of the Issuer or you without regard to our own financial or other interests.
- o The Issuer or you may choose to engage the services of a municipal advisor with a fiduciary obligation to represent the Issuer’s or your interest in this transaction.
- o The underwriter has a duty to purchase the Bonds from the Issuer at a fair and reasonable price, but must balance that duty with their duty to sell the Bonds to investors at prices that are fair and reasonable.

---

<sup>1</sup> Revised Interpretive Notice Concerning the Application of MSRB Rule G-17 to Underwriters of Municipal Securities (effective Mar. 31, 2021).

<sup>2</sup> When we refer to *potential* material conflicts throughout this letter, we refer to ones that are reasonably likely to mature into *actual* material conflicts during the course of the transaction, which is the standard required by MSRB Rule G-17.

- o The placement agent has a duty to use its commercially reasonable efforts to arrange the purchase of securities from the Issuer at a fair and reasonable price, but must balance that duty with its duty to arrange the sale of securities to investors at prices that are fair and reasonable.
- o The underwriter or the placement agent will review the official statement for the securities, if any, in accordance with, and a part of, its respective responsibilities to investors under the federal securities laws, as applied to the facts and circumstances of this transaction.<sup>3</sup>

**B. Disclosures Concerning the Underwriter's or the Placement Agent's Compensation:**

- o The underwriter will be compensated by a fee and/or an underwriting discount that will be set forth in the bond purchase agreement to be negotiated and entered into in connection with the issuance of the Bonds. The placement agent will be compensated by a fee agreed upon with the Issuer in connection with the private placement of the Issue. Payment or receipt of the underwriting/placement agent fee or discount will be contingent on the closing of the transaction and the amount of the fee or discount may be based, in whole or in part, on a percentage of the principal amount of the Bonds. While this form of compensation is customary in the municipal securities market, it presents a conflict of interest since the underwriters may have an incentive to recommend to the Issuer a transaction that is unnecessary or to recommend that the size of the transaction be larger than is necessary.

Sincerely,

Stifel, Nicolaus & Company, Incorporated

By:  \_\_\_\_\_

Name: Andrew Lanam

Title: Director

---

<sup>3</sup> Under federal securities law, an issuer of securities has the primary responsibility for disclosure to investors. The review of the official statement by the underwriter or placement agent is solely for purposes of satisfying the underwriter's or placement agent's obligations under the federal securities laws and such review should not be construed by you as a guarantee of the accuracy or completeness of the information in the official statement.



Obligor accepts and acknowledges the foregoing.

Accepted and Executed

By: \_\_\_\_\_

Name: \_\_\_\_\_

Title: \_\_\_\_\_

Date: \_\_\_\_\_

# Final Read Ord 2022-33

Wednesday, November 9, 2022 5:06 PM

# Montgomery County Board of Commissioners

## Ordinance 2022-33

### AN ORDINANCE CREATING THE 2023 HAZMAT TRAINING GRANT

Whereas, the Montgomery County Emergency Management Agency has been awarded \$16,000 from the Indiana Department of Homeland Security for a Hazardous Materials Emergency Preparedness Program (HMEP) grant which will provide for 2023 Confined Space Training; and

Whereas, the use of funds from this award is controlled by the Award Agreement executed by the Montgomery County Department of Emergency Management Agency and the Indiana Department of Homeland Security, this agreement requires the creation of a new fund; and

Whereas, the Montgomery County Board of Commissioners finds that a new fund, the HMEP 2023 Hazmat Training Grant Fund should be created in order to receive the funds and to provide a mechanism for appropriation and accounting for the funds used.

Therefore, it is ordained that a new section, Section 35.\_\_\_\_ of the Montgomery County Code, is hereby added to the County Code and that this new section shall read as follows:

“§ 35.141 HMEP 2023 HAZMAT TRAINING GRANT FUND

- (A) *Source of Funds.* The Montgomery County Board of Commissioners hereby establishes the HMEP 2023 Hazmat Training Grant Fund. The fund shall consist of monies received by the Montgomery County Emergency Management Agency from the Indiana Department of Homeland Security for support of the HMEP 2023 Hazmat Training Grant program and will provide funding for 2023 Confined Space Training.
- (B) *Use of Funds.* All money in the Fund will be used by the Emergency Management Agency in a manner consistent with the terms and conditions of the Award Agreement
- (C) *Non-Reverting Fund.* This is a Non-Reverting Fund.”

It is further ordained that this ordinance shall be effective upon adoption.

It is further ordained that all other provisions of the Montgomery County Code of Ordinances which are not specifically amended by this ordinance shall remain in full force and effect.

Adopted this \_\_\_\_ day of November, 2022.

Montgomery County Board of  
Commissioners:

---

James D. Fulwider, President

---

John Frey, Vice President

---

Dan Guard, Member

Attest:

---

Jennifer Andel, Auditor

# Final Read Ord 2022-34

Wednesday, November 9, 2022 5:07 PM

# **Montgomery County Board of Commissioners**

## **Ordinance 2022-34**

### **AN ORDINANCE CREATING THE 2022 EM-HS/CERT PROGRAM TRAINING ROOM & MASS NOTIFICATION SYSTEM GRANT**

**Whereas, the Montgomery County Emergency Management Agency has been awarded \$92,504.43 from the State Homeland Security Program for a 2022 CERT Program Training Room and Mass Notification System Grant; and**

**Whereas, the use of funds from this award is controlled by the Award Agreement executed by the Montgomery County Department of Emergency Management Agency and the State Department of Homeland Security, this agreement requires the creation of a new fund; and**

**Whereas, the Montgomery County Board of Commissioners finds that a new fund, the 2022 EM-HS/CERT Program Training Room & Mass Notification System Grant Fund should be created in order to receive the funds and to provide a mechanism for appropriation and accounting for the funds used.**

**Therefore, it is ordained that a new section, Section 35.\_\_\_\_ of the Montgomery County Code, is hereby added to the County Code and that this new section shall read as follows:**

**“§ 35.141 2022 EM-HS/CERT PROGRAM TRAINING ROOM & MASS NOTIFICATION  
SYSTEM GRANT FUND**

- (A) *Source of Funds.* The Montgomery County Board of Commissioners hereby establishes the 2022 EM-HS/CERT Program Training Room & Mass Notification System Grant Fund. The fund shall consist of monies received by the Montgomery County Emergency Management Agency from the State Department of Homeland Security.
- (B) *Use of Funds.* All money in the Fund will be used by the Emergency Management Agency in a manner consistent with the terms and conditions of the Award Agreement
- (C) *Non-Reverting Fund.* This is a Non-Reverting Fund.”

**It is further ordained that this ordinance shall be effective upon adoption.**

**It is further ordained that all other provisions of the Montgomery County Code of Ordinances which are not specifically amended by this ordinance shall remain in full force and effect.**

Adopted this \_\_\_\_ day of November, 2022.

Montgomery County Board of  
Commissioners:

---

James D. Fulwider, President

---

John Frey, Vice President



\_\_\_\_\_  
Dan Guard, Member

Attest:

\_\_\_\_\_  
Jennifer Andel, Auditor

# Final Read Ord 2022-35

Wednesday, November 9, 2022 5:07 PM

# **Montgomery County Board of Commissioners**

## **Ordinance 2022-35**

### **AN ORDINANCE CREATING THE 2022 LAW ENFORCEMENT CYBERSECURITY TERRORISM COUNTERMEASURES GRANT FUND**

Whereas, the Montgomery County Emergency Management Agency has been awarded \$145,991.28 from the State Homeland Security Program for a 2022 Law Enforcement Cybersecurity Terrorism Countermeasures Grant Fund; and

Whereas, the use of funds from this award is controlled by the Award Agreement executed by the Montgomery County Department of Emergency Management Agency and the State Department of Homeland Security, this agreement requires the creation of a new fund; and

Whereas, the Montgomery County Board of Commissioners finds that a new fund, the 2022 Law Enforcement Cybersecurity Terrorism Countermeasures Grant Fund should be created in order to receive the funds and to provide a mechanism for appropriation and accounting for the funds used.

Therefore, it is ordained that a new section, Section 35.\_\_\_\_ of the Montgomery County Code, is hereby added to the County Code and that this new section shall read as follows:

**"§ 35.141 2022 LAW ENFORCEMENT CYBERSECURITY TERRORISM  
COUNTERMEASURES GRANT FUND**

- (A) *Source of Funds.* The Montgomery County Board of Commissioners hereby establishes the 2022 Law Enforcement Cybersecurity Terrorism Countermeasures Grant Fund. The fund shall consist of monies received by the Montgomery County Emergency Management Agency from the State Department of Homeland Security.
- (B) *Use of Funds.* All money in the Fund will be used by the Emergency Management Agency in a manner consistent with the terms and conditions of the Award Agreement
- (C) *Non-Reverting Fund.* This is a Non-Reverting Fund."

**It is further ordained that this ordinance shall be effective upon adoption.**

**It is further ordained that all other provisions of the Montgomery County Code of Ordinances which are not specifically amended by this ordinance shall remain in full force and effect.**

Adopted this \_\_\_\_ day of November, 2022.

Montgomery County Board of  
Commissioners:

---

James D. Fulwider, President

---

John Frey, Vice President

---

**Dan Guard, Member**

**Attest:**

---

**Jennifer Andel, Auditor**

# Resolution 2022-8

Thursday, November 10, 2022 2:52 PM

# **MONTGOMERY COUNTY BOARD OF COMMISSIONERS**

## **Resolution 2022-8**

### **Resolution Approving Intergovernmental Cooperation Agreement With the City of Crawfordsville for Emergency Medical Services**

**WHEREAS**, Indiana law allows units of governments to enter into Interlocal cooperation agreements for the provisions of services;

**AND WHEREAS**, the Board of Commissioners has issued a request for information and negotiated a tentative agreement under which the City of Crawfordsville would provide emergency medical services to the unincorporated areas of Montgomery County;

**AND WHEREAS**, the Board of Commissioners find that the attached Interlocal government cooperation agreement with the City of Crawfordsville should be approved;

**AND WHEREAS**, this agreement will become effective only after it is approved by the Board of Commissioners, the Montgomery County Council, the Mayor of the City of Crawfordsville, and the Common Council of the City of Crawfordsville.

#### **IT IS, THEREFORE, RESOLVED AS FOLLOWS:**

1. The attached intergovernmental cooperation agreement regarding the provision of emergency medical services by the City of Crawfordsville is hereby approved;
2. The President of the Board of Commissioners of Montgomery County is hereby authorized, on behalf of the County, to enter into the Intergovernmental Cooperation Agreement, in order to bind the County to the terms and conditions of said agreement. The President shall also execute all documents necessary to effectuate this agreement and deliver this resolution and agreement to the Mayor of the City of Crawfordsville who will facilitate the approval of a reciprocal resolution by the Mayor and the City Council.
3. The County Administrator will deliver this resolution and the Interlocal governmental cooperation agreement to the President of the Montgomery County Council and request that the Council consider approving the agreement;
4. The County Administrator will advise the Board of Commissioners of the approval of a reciprocal agreement and execution of the agreement by the Mayor and the Common Council for the City of Crawfordsville;
5. Upon approval of the agreement by a reciprocal resolution of the County Council, Mayor and City Council, the Auditor will immediately record the agreement in the Office of the

Recorder and file the agreement with the Indiana Department of Local Government Finance within sixty (60) days of its recording.

ADOPTED this \_\_\_\_\_ day of November, 2022.

Board of Commissioners of Montgomery County

\_\_\_\_\_  
John Frey, President

\_\_\_\_\_  
James D. Fulwider, Vice President

\_\_\_\_\_  
Dan Guard, Member  
Constituting a majority of the Board

ATTEST:

\_\_\_\_\_  
Jennifer Andel, Auditor