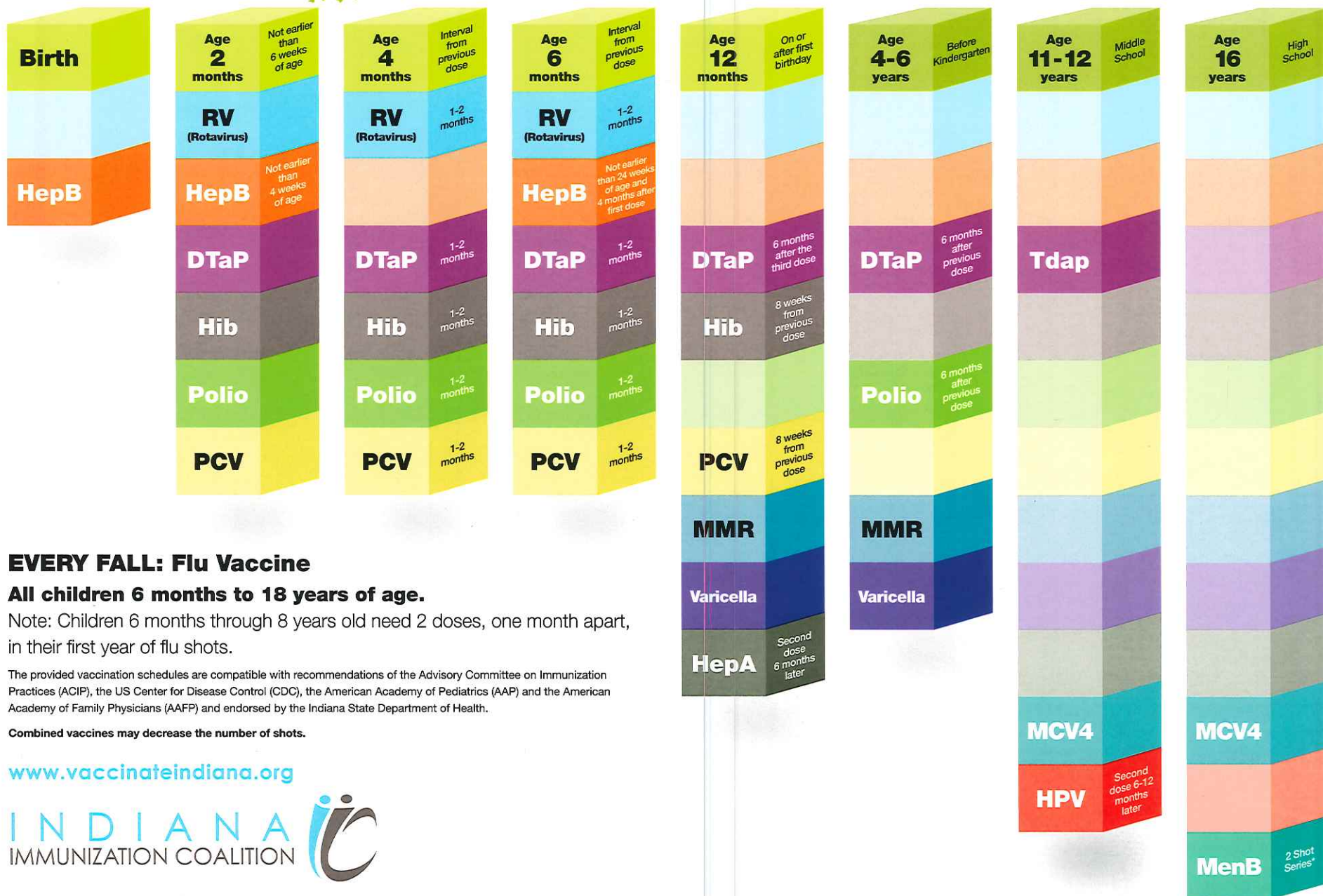


GET THEM IN ON TIME

Vaccination Schedules — Birth–16 years



EVERY FALL: Flu Vaccine

All children 6 months to 18 years of age.

Note: Children 6 months through 8 years old need 2 doses, one month apart, in their first year of flu shots.

The provided vaccination schedules are compatible with recommendations of the Advisory Committee on Immunization Practices (ACIP), the US Center for Disease Control (CDC), the American Academy of Pediatrics (AAP) and the American Academy of Family Physicians (AAFP) and endorsed by the Indiana State Department of Health.

Combined vaccines may decrease the number of shots.

www.vaccinateindiana.org

INDIANA
IMMUNIZATION COALITION